

4792 Capacity and Range Chart:

OPERATING HEIGHT	LOAD RATINGS IN LBS. WITH OUTRIGGERS EXTENDED						AREA OF OPERATION
	29 FT	44 FT	57 FT	71 FT	84 FT	92 FT	
5	78	47000					
8	71	36800	78	20300			
10	67	30900	75	20300	79	18400	
12	62	26100	73	20300	77	17400	
14	58	21900	70	19400	75	16800	
16	53	18800	67	17300	73	15900	
20	41	14200	61	13900	68	13400	
25	21	10400	53	10900	63	10600	
30			45	8625	57	8625	
35			34	6925	51	6925	
40			19	5225	44	5625	
45					36	4625	
50					26	3725	
55					1	1225	
60							
65							
70							
75							
80							

JIB CAPACITIES FOR ALL BOOM LENGTHS								
LOADED BOOM ANGLE	50°	55°	60°	65°	70°	75°	78°	80°
RETRACTED 26 FT JIB	725	1025	1525	2325	3225	4325	4925	5325
EXTENDED 44 FT JIB	425	725	1125	1525	2025	2525	2825	3125

NOTE: Please see the 4700 Series 6-page specification for a complete listing of standard features and optional equipment.

4792 Optional Mounting Configurations:

- Behind Cab (TC)
- Rear Mount (RM)
- Pedestal Mount (PM)

(Some standard features for the optional mounting configurations will vary. Please consult your Simon-RO dealer or factory for chassis and mounting requirements.)

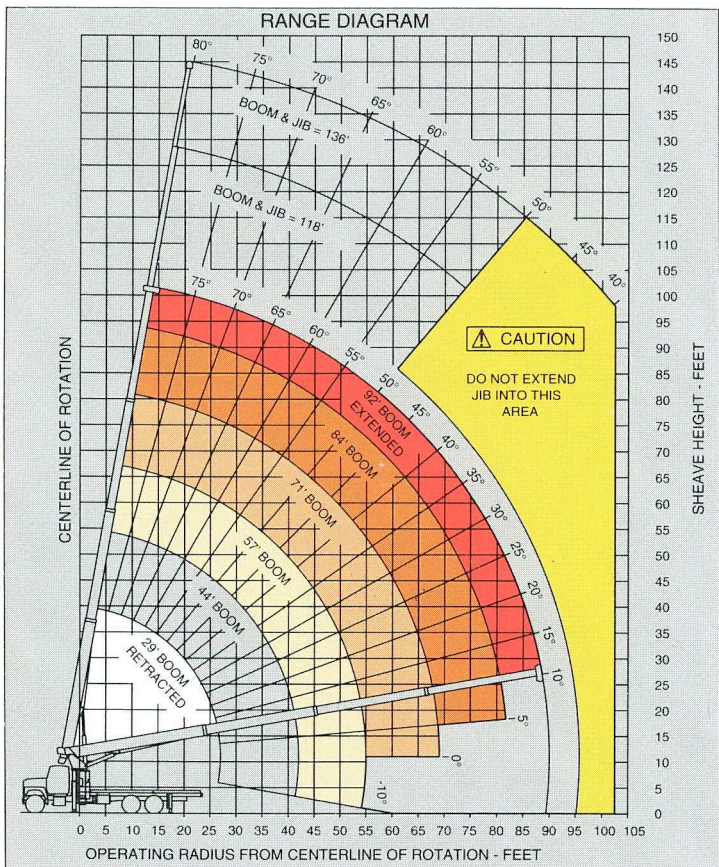
TC 4792 Recommended Chassis Requirements:

- Gross Vehicle Weight 52,000 Lbs.
- Front Axle Weight Rating 18,000 Lbs.
- Rear Axle Weight Rating 34,000 Lbs.
- Wheelbase 246 In.
- Cab To Axle 168 In.
- Transmission Heavy-Duty (Neutral lock-up required for automatic transmission)
- Electrical System Heavy-Duty
- Cooling System Heavy-Duty
- Frame Section Modulus 26.0 Cubic In.
- RBM Per Frame Rail 2,860,000 In./Lbs.

Rope and Reeving:

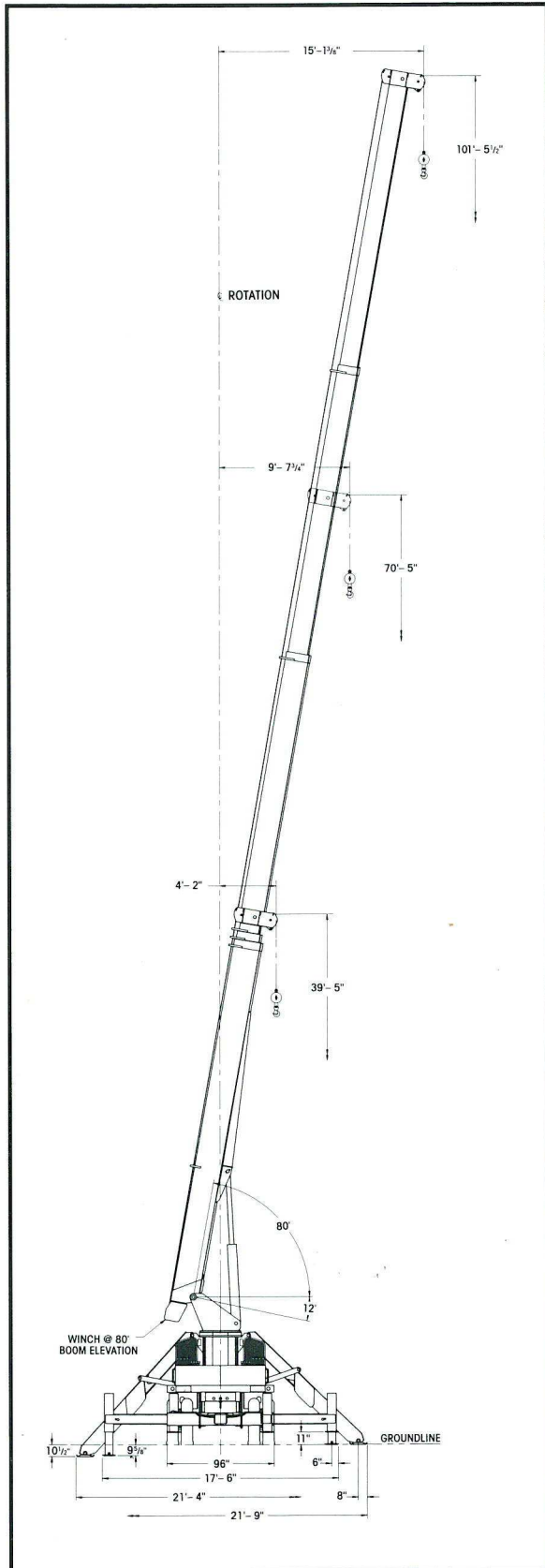
1 PART LINE	2 PART LINE	3 PART LINE	4 PART LINE	5 PART LINE	CAUTION ANTI-TWO-BLOCK SYSTEM MUST BE IN GOOD OPERATING CONDITION BEFORE OPERATING CRANE. REFER TO OWNER'S MANUAL. KEEP AT LEAST 3 WRAPS OF LOADLINE ON DRUM AT ALL TIMES. USE ONLY 9/16" DIAMETER CABLE WITH 33,600 LB. BREAKING STRENGTH ON THIS MACHINE.
 OVERHAUL BALL LOADS UP TO 9,600 LBS. STD. CABLE 6,720 LBS. ROT RESIST. CABLE	 ONE SHEAVE LOAD BLOCK LOADS UP TO 19,200 LBS. STD. CABLE 13,440 LBS. ROT RESIST. CABLE	 ONE SHEAVE LOAD BLOCK LOADS UP TO 28,800 LBS. STD. CABLE 20,160 LBS. ROT RESIST. CABLE	 TWO SHEAVE LOAD BLOCKS LOADS UP TO 38,400 LBS. STD. CABLE 28,800 LBS. ROT RESIST. CABLE	 AUX SHEAVE TWO SHEAVE LOAD BLOCKS LOADS UP TO 48,000 LBS. STD. CABLE 33,600 LBS. ROT RESIST. CABLE	

THIS MACHINE COMPLIES WITH OSHA REGULATIONS 1910.180 AND 1926.550 WHERE APPLICABLE AT DATE OF MANUFACTURE



NOTE: Diagrams depict recommended mounting dimensions. The dimensions of optional pedestal and rear mounts will vary. Please consult your dealer or Simon-RO for specifics. Dimensions do not include load deflection.

Dimensional Data:



TC 4792:

Maximum Sheave Height with four-section, 92-foot boom: 101'.

Maximum lifting radius: 80'.

Maximum sheave height with 44' jib: 144'.

Maximum lifting capacity: 47,000 lbs.

TC 4792 Weights:

Standard TC 4792 with 21' subframe and fluids:23,900 lbs.
 Optional 21' wood flatbed:1,865 lbs.
 Optional 44' two-stage jib:1,340 lbs.

Minimum axle weights with crane installed on truck and in stowed configuration for 85% stability (without jib).

Front Axle12,400 lbs.
 Rear Axle28,300 lbs.

Do Not Operate Within 10 Feet Of Overhead Power Lines.

