



# CRANE SPECIFICATIONS

## BOOM

Five section full power synchronized telescoping boom, 36.1' ~ 141.1' (11.0 m ~ 43.0 m), of round box construction with six sheaves, 17-5 / 16" (0.44 m) root diameter, at boom head. The synchronization system consists of two telescope cylinders, an extension cable and retraction cable. Hydraulic cylinder fitted with holding valve. Two easily removable wire rope guards, rope 75 Ton Capacity (68.0 Metric Tons) sections are supported by wear pads both vertically and horizontally. Extension speed 105' in 128 seconds.

**BOOM ELEVATION** - By a double acting hydraulic cylinder with holding valve. Elevation -1.6° ~ 80.3°, combination controls for hand or foot operation. Boom angle indicator. Automatic speed reduction and slow stop function. Boom raising speed 20° to 60° in 46 seconds.

**JIB** - two stage bi-fold lattice type, 3.5°, 25° or 45° offset (tilt type). Single sheave, 15-5 / 8" (0.396 m) root diameter, at the head of both jib sections. Stored alongside base boom section. Jib length is 33.2' (10.1 m) or 58.1' (17.7 m). Assistant cylinders for mounting and stowing, controlled at right side of superstructure. Self stowing jib mounting pins.

## AUXILIARY LIFTING SHEAVE (SINGLE TOP)

Single sheave, 15-5 / 8" (0.396 m) root diameter. Mounted to main boom head for single line work (stowable).

**ANTI-TWO BLOCK** - Pendant type over-winding cut out device with audio-visual (FAILURE lamp/BUZZER) warning system.

## SLEWING

Hydraulic axial piston motor through planetary slewing speed reducer. Continuous 360° full circle slewing on ball bearing turn table at 2.4 min<sup>-1</sup>(rpm). Equipped with manually locked/released slewing brake. A 360° positive slewing lock for pick and carry and travel modes, manually engaged in cab. Twin slewing system: Free slewing or lock slewing controlled by selector switch on front console.

## HOIST

**MAIN HOIST** - Variable speed type with grooved drum driven by hydraulic axial piston motor through speed reducer. Power load lowering and raising. Equipped with automatic brake (neutral brake) and counterbalance valve. Controlled independently of auxiliary hoist. Equipped with cable follower and drum rotation indicator.

**DRUM** - Grooved 14-1 / 4" (0.362 m) root diameter x 23-5 / 8" (0.6 m) wide. Wire rope: 771' of 3 / 4" diameter rope (235 m of 19 mm). Drum capacity: 997' (304 m) 7 layers. Maximum single line pull: 1st layer 16,500 lbs (7,480 kg). Maximum permissible line pull wire strength: 15,600 lbs (7,085 kg).

**AUXILIARY HOIST** - Variable speed type with grooved drum driven by hydraulic axial piston motor through speed reducer. Power load lowering and raising. Equipped with automatic brake (neutral brake) and counterbalance valve. Controlled independently of main hoist. Equipped with cable follower and drum rotation indicator.

**DRUM** - Grooved 14-1 / 4" (0.362 m) root diameter x 23-5 / 8" (0.6 m) wide. Wire rope: 436' of 3 / 4" diameter rope (133 m of 19 mm). Drum capacity: 997' (304 m) 7 layers. Maximum single line pull: 1st layer 16,500 lbs (7,480 kg). Maximum permissible line pull wire strength: 15,600 lbs (7,085 kg).

**WIRE ROPE** - Warrington seal wire, extra improved plow steel, preformed, independent wire rope core, right regular lay. 3 / 4" (19 mm) 6 X 31 class

## HOOK BLOCKS

75 ton (68.0 metric ton) - 7 sheaves with swivel hook and safety latch, for 3 / 4" (19 mm) wire rope.(OPTIONAL)  
6.2 ton (5.6 metric ton) - Weighted hook with swivel and safety latch, for 3 / 4" (19 mm) wire rope.

## HYDRAULIC SYSTEM

**PUMPS** - Two variable piston pumps for crane functions. Tandem gear pump for steering, slewing and optional equipment. Powered by carrier engine. Pump disconnect for crane is engaged / disengaged by rotary switch from operator's cab.

**CONTROL VALVES** - Multiple valves actuated by pilot pressure with integral pressure relief valves.

**RESERVOIR** - 202 gallon (763 lit.) capacity. External sight level gauge.

**FILTRATION** - BETA10=10 return filter, full flow with bypass protection, located inside of hydraulic reservoir. Accessible for easy replacement.

**OIL COOLER** - Air cooled fan type.

## CAB AND CONTROLS

Both crane and drive operations can be performed from one cab mounted on rotating superstructure.

Left side, 1 man type, steel construction with sliding door access and safety glass windows opening at side. Door window is powered control. Windshield glass window and roof glass window are shatter-resistant. Tilt-telescoping steering wheel. Adjustable control lever stands for slewing, boom hoist, boom telescoping, auxiliary hoist and main hoist. Control lever stands can change neutral positions and tilt for easy access to cab. 3 way adjustable operator's seat with high back, headrest and armrest. Engine throttle knob. Foot operated controls: boom elevating boom telescoping, service brake and engine throttle. Hot water cab heater and air conditioning.

Dash-mounted engine start / stop, monitor lamps, cigarette lighter, drive selector switch, parking brake switch, steering mode select switch, power window switch, pump engaged / disengaged switch, slewing brake switch, telescoping/auxiliary hoist select switch, outrigger controls, free slewing / lock slewing selector switch, eco mode switch, and ashtray.

Instruments - Torque converter oil temperature, engine water temperature, air pressure, fuel, speedometer, tachometer, hour meter and odometer / tripmeter. Hydraulic oil pressure is monitored and displayed on the AML-C display panel.

Tadano electronic LOAD MOMENT INDICATOR system (AML-C) including:

- Control lever lockout function with audible and visual pre-warning
- Boom position indicator
- Outrigger state indicator
- Boom angle / boom length / jib offset angle / jib length / load radius / rated lifting capacities / actual loads read out
- Ratio of actual load moment to rated load moment indication
- Automatic Speed Reduction and Slow Stop function on boom elevation and slewing
- Working condition register switch
- Load radius / boom angle / tip height / slewing range preset function
- External warning lamp
- Tare function
- Fuel consumption monitor
- Main hoist / auxiliary hoist select
- Drum rotation indicator (audible and visible type) main and auxiliary hoist

TADANO AML-C monitors outrigger extended length and automatically programs the corresponding "RATED LIFTING CAPACITIES" table

Operator's right hand console includes transmission gear selector, slewing lock lever and sight level bubble. Upper console includes working light switch, roof washer and wiper switch, emergency outrigger set up key switch, jib equipped / removed select switch, eco mode switch, and air conditioning control switch.

NOTE: Each crane motion speed is based on unladen conditions.

## CARRIER SPECIFICATIONS

**TYPE** - Rear engine, left hand steering, driving axle 2-way selected type by manual switch, 4 x 2 front drive, 4 x 4 front and rear drive.

**FRAME** - High tensile steel, all welded mono-box construction.

**TRANSMISSION** - Electronically controlled full automatic transmission. Torque converter driving full powershift with driving axle selector. 6 forward and 2 reverse speeds, constant mesh.

- 3 speeds - high range - 2 wheel drive; 4 wheel drive
- 3 speeds - low range - 4 wheel drive

**TRAVEL SPEED** - 22 mph (36 km/h)

**AXLE** - Front: Full floating type, steering and driving axle with planetary reduction. Rear: Full floating type, steering and driving axle with planetary reduction and non-spin rear differential.

**STEERING**- Hydraulic power steering controlled by steering wheel. Four steering modes available: 2 wheel front, 2 wheel rear, 4 wheel coordinated and 4 wheel crab .

**SUSPENSION** - Front: Rigid mounted to frame. Rear: Pivot mounted with hydraulic lockout device.

**BRAKE SYSTEMS** - Service: Air over hydraulic disc brakes on all 4 wheels. Parking / Emergency: Spring applied-air released brake acting on input shaft of front axle. Auxiliary: Electro-pneumatic operated exhaust brake.

**TIRES** - 29.5-25 22PR (OR) Air pressure: 60 psi (420 kPa) or 29.5-25 28PR (OR) Air pressure: 64 psi (450 kPa)

**OUTRIGGERS** - Four hydraulic, beam and jack outriggers. Vertical jack cylinders equipped with integral holding valve. Each outrigger beam and jack is controlled independently from cab. Beams extend to 23' 11-3 / 8" (7.3 m) center-line and retract to within 10' 10-1 / 2" (3.315 m) overall width with floats. Outrigger jack floats are attached thus eliminating the need of manually attaching and detaching them. Controls and sight bubble located in superstructure cab. Four outrigger extension lengths are provided with corresponding "RATED LIFTING CAPACITIES" for crane duty in confined areas.

- Min. Extension 8' 10-1 / 4" (2.7 m) center to center
- Mid. Extension 18' 1 / 2" (5.5 m) center to center
- Mid. Extension 21' 11-3 / 4" (6.7 m) center to center
- Max. Extension 23' 11-3 / 8" (7.3 m) center to center
- Float size (Diameter) 1' 11- 5 / 8" (0.6 m)

### ENGINE

Model	Cummins QSB6.7 EPA)Tier4 Final
Type	Direct injection diesel
No. of cylinders	6
Combustion	4 cycle, turbo charged and after cooled
BoreXStroke, in.(mm)	4.212 X 4.882 (107 X 124)
Displacement, cu. in (liters)	409 (6.700)
Air inlet heater	24 volt preheat
Air cleaner	Dry type, replaceable element
Oil filter	Full flow with replaceable element
Fuel filter	Full flow with replaceable element
Fuel tank, gal.(liters)	79.2 (300), right side of carrier
Cooling	Liquid pressurized, recirculating by-pass

Radiator	Fin and tube core, thermostat controlled
Fan, in. (mm)	Suction type, 9-blade, 28 (711) dia.
Starting	24 volt
Charging	24 volt system, negative ground
Battery	2-120 amp. Hour
Compressor, air, CFM (l/min)	17.0 CFM (481) at 2,400 rpm
Output, Max. HP (kW)	Gross 270 (201) at 2,000 rpm
Torque, Max. ft-lb (Nm)	730 (990) at 1,500 rpm
Capacity, gal.(liters)	
Cooling water	2.7 (10)
Lubrication	4.0 (15)
Fuel	79.2 (300)
DEF / AdBlue	10.0 (38)

# STANDARD EQUIPMENT

- Five section full power partially synchronized boom  
36.1' ~ 141.1' (11.0 m ~ 43.0 m)
- 33.2' or 58.1' (10.1 m or 17.7 m) bi-fold lattice jib (tilt type) with 3.5°, 25° or 45° pinned offsets and self storing pins.
- Quick reeving type bi-fold jib
- Anti-Two block device (overwind cutout)
- Mirror for main and auxiliary hoists
- Work lights
- Variable speed main hoist with grooved drum, cable follower, drum rotation indicator (audible, visible and thumper type) and 771' of 3 / 4" cable.
- Variable speed auxiliary hoist with grooved drum, cable follower, drum rotation indicator (audible, visible and thumper type) and 436' of 3 / 4" cable.
- Auxiliary lifting sheave (single top) stowable
- 6.2 ton (5.6 metric ton) hook with swivel
- Tadano twin slewing system and 360° positive slewing lock
- Positive control
- Hydraulic oil cooler
- 3 way adjustable cloth seat with armrests, high back and seat belt
- Tilt-telescoping steering wheel
- Tinted safety glass and sun visor
- Front windshield wiper and washer
- Roof window wiper and washer
- Power window (cab door)
- Cigarette lighter and ashtray
- Cab floor mat
- Pump disconnect in operator's cab
- Air conditioner (hot water heater and cooler)
- Full instrumentation package
- Self centering finger control levers with pilot control
- Control pedals for boom elevating and boom telescoping
- Low oil pressure / high water temp. warning device (visual)
- Rear steer centering light
- Air cleaner dust indicator
- Tadano electronic load moment indicator system (AML-C)
- Boom angle indicator
- Outrigger extension length detector
- Electronic crane monitoring system
- Rear view mirrors (right and left side)
- Fenders
- Air dryer
- Complete highway light package
- Towing hooks-Front and rear
- Hook block tie down (front bumper)
- Weighted hook storage compartment
- Halogen head lamp
- Independently controlled outriggers
- Four outrigger extension positions
- Self-storing outrigger pads
- Electronic controlled automatic transmission driven by torque converter
- 4 X 4 X 4 drive/steer
- Non-spin rear differential
- Automatic rear axle oscillation lockout system
- 29.5-25 22PR (OR) tires or 29.5-25 28PR (OR) tires
- Disc brakes
- Water separator with filter (high filtration)
- Back-up alarm
- 24 volt electric system
- Tool storage compartment
- Tire inflation kit
- Cummins QSB6.7 turbo charged after cooled engine (270 HP) with exhaust brake
- Engine over-run alarm
- Lifting eyes
- Telematics(machine data logging and monitoring system) with HELLO-NET via internet (availability depends on countries)
- Fuel consumption monitor
- Eco mode system
- Radiator cover

# OPTIONAL EQUIPMENT

- 75 ton (68.0 metric ton) - 7 sheave with swivel hook and safety latch for 3 / 4" (19 mm) wire rope
- Working lamp with remote controller
- Wind speed indicator
- Emergency steering system
- Over unwinding prevention
- Engine oil pan heater
- Engine coolant heater

# HOISTING PERFORMANCE

## LINE SPEEDS AND PULLS

Layer	Main or auxiliary hoist - 14-1 / 4" (0.362 m) drum			
	Line speeds <sup>1</sup>		Line pulls Available <sup>2</sup>	
	F.P.M	m / min	Lbs.	kgf
1st	331	101	16,500	7,480
2nd	361	110	15,200	6,900
3rd	390	119	13,800	6,260
4th	420	128	12,700	5,760
5th	450	137	11,900	5,400
6th	479	146	11,000	4,990
7th <sup>3</sup>	509	155	10,300	4,670

- Maximum permissible line pull wire strength  
15,600 lbs (7,085 kg) with 6 X 31 class rope.

<sup>1</sup> Line speeds based only on hook block, not loaded.

<sup>2</sup> Developed by machinery with each layer of wire rope, but not based on rope strength or other limitation in machinery or equipment.

<sup>3</sup> Seventh layer of wire rope are not recommended for hoisting operations.

## DRUM WIRE ROPE CAPACITIES

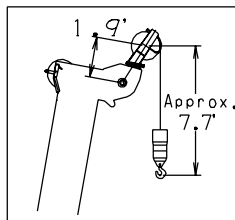
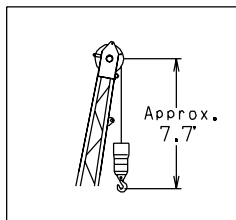
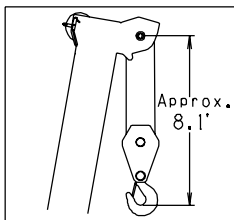
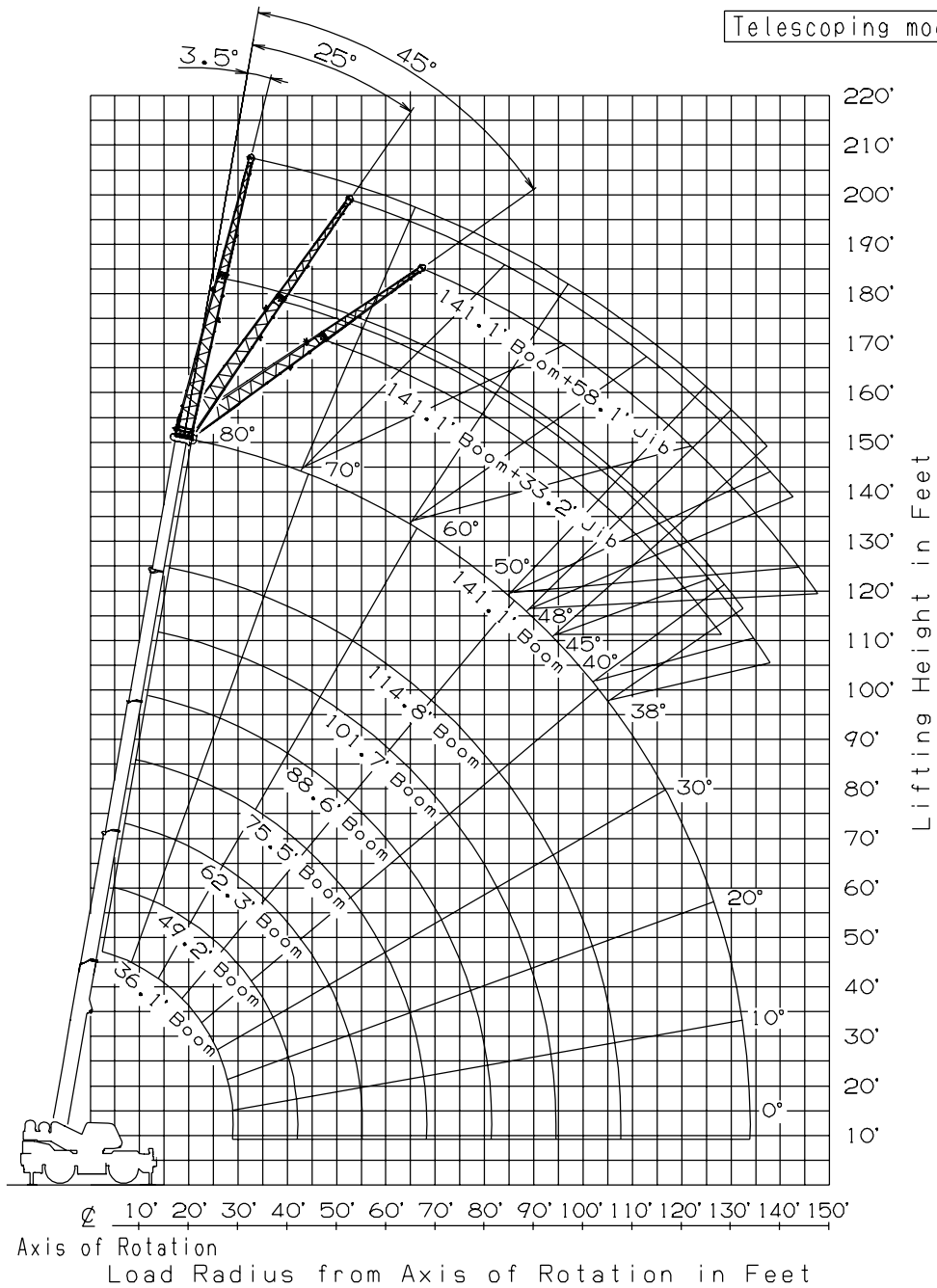
Wire rope layer	Main and auxiliary drum grooved lagging			
	3 / 4" (19 mm) wire rope			
	Rope per layer		Total wire rope	
	Feet	Meters	Feet	Meters
1	112.2	34.2	112.2	34.2
2	122.3	37.3	234.5	71.5
3	132.2	40.3	366.8	111.8
4	142.3	43.4	509.1	155.2
5	152.2	46.4	661.4	201.6
6	162.4	49.5	823.8	251.1
7	172.5	52.6	996.4	303.7

## DRUM DIMENSIONS

	Inch	mm
Root diameter	14-1 / 4"	362
Length	23-5 / 8"	600
Flange diameter	25-7 / 8"	657

# GR-750XL WORKING RANGE CHART

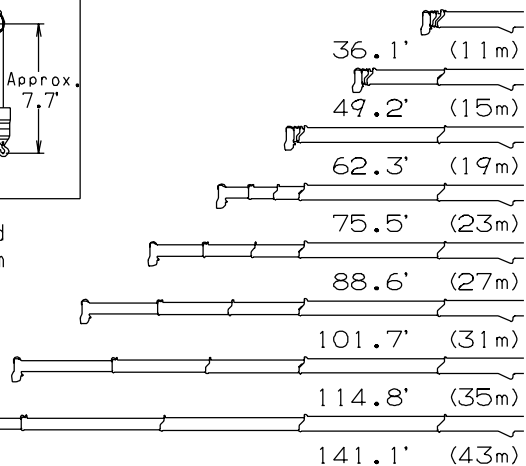
Telescoping mode I



NOTE: 1. Boom and jib geometry shown are for unloaded condition and machine standing level on firm supporting surface.

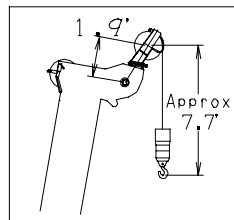
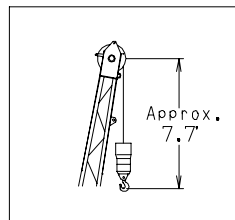
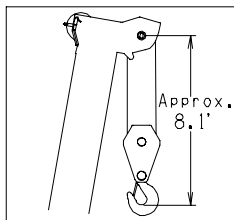
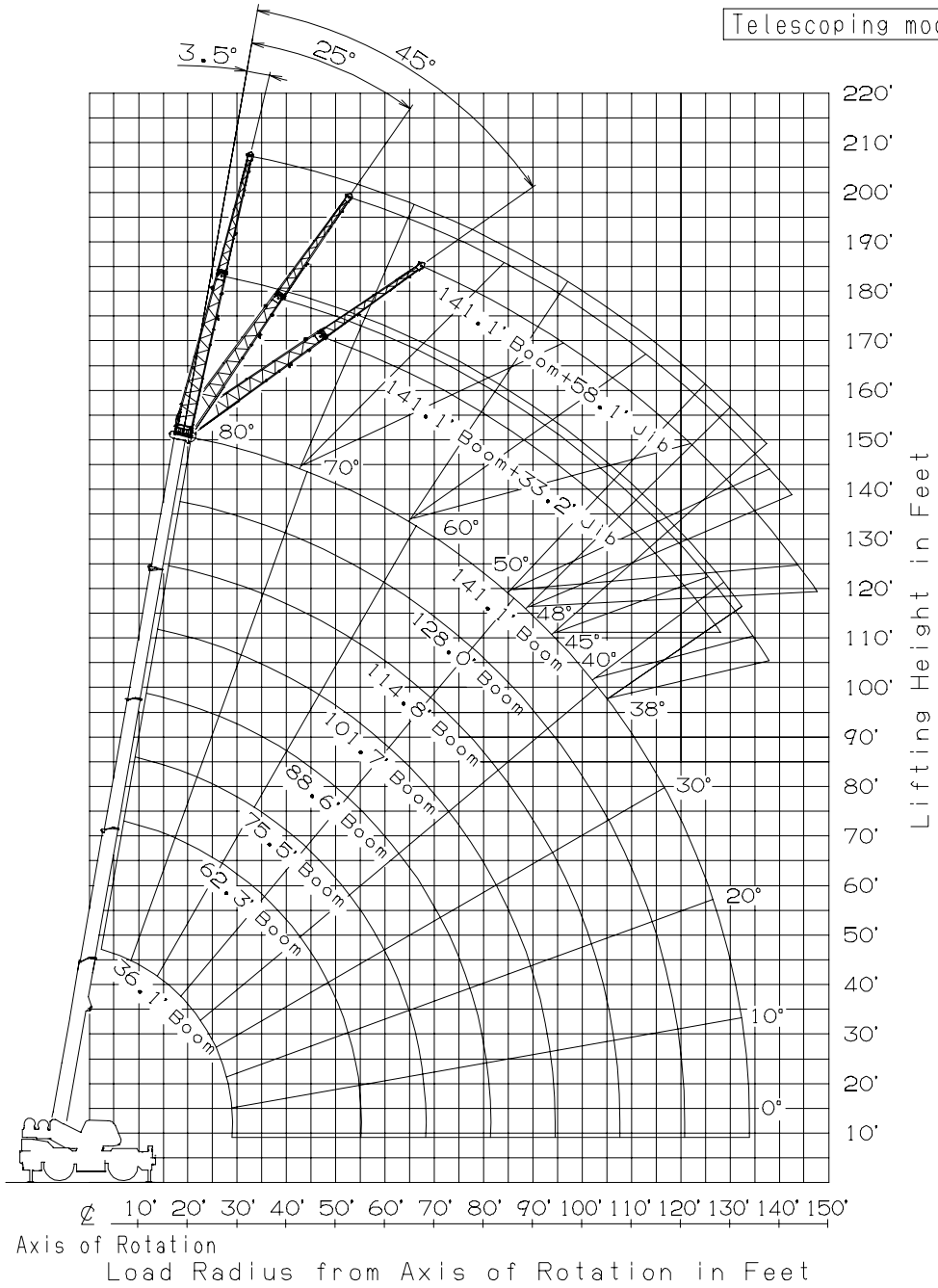
Boom deflection and subsequent radius and boom angle change must be accounted for when applying load to hook.

Boom Length in Feet

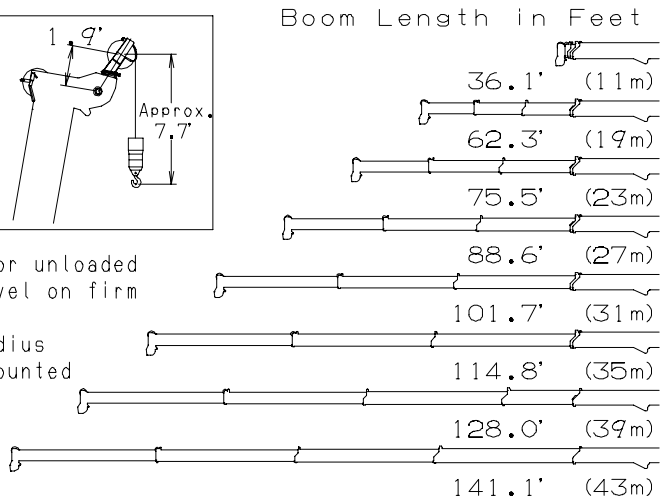


# GR-750XL WORKING RANGE CHART

Telescoping mode **II**



NOTE: 1. Boom and jib geometry shown are for unloaded condition and machine standing level on firm supporting surface. Boom deflection and subsequent radius and boom angle change must be accounted for when applying load to hook.



## GR-750XL RATED LIFTING CAPACITIES (IN POUNDS)

COUNTERWEIGHT 12,500 lbs (5.7 t)																					
ON OUTRIGGERS FULLY EXTENDED 23' 11-3/8" (7.3 m) SPREAD																					
360° ROTATION																					
A B	36.1'		49.2'		62.3' (19 m)			75.5' (23 m)			88.6' (27 m)		101.7' (31 m)		114.8' (35 m)		128.0'	141.1'			
	C	(11 m)	C	(15 m)	C	C	C	C	C	C	C	C	C	C	C	C	(39 m)	C	(43 m)		
8'	72	150,000	77	90,000																	
10'	68	132,300	75	90,000	79	70,500	78	44,100													
12'	64	117,100	72	90,000	77	70,500	76	44,100	79	44,100	79	44,100									
15'	59	98,000	68	90,000	73	70,500	73	44,100	77	44,100	77	44,100	79	44,100	79	37,500					
20'	48	75,600	62	75,100	69	69,600	69	44,100	73	44,100	73	44,100	76	42,400	76	37,100	78	36,600	78	31,700	
25'	33	60,000	54	59,400	64	59,100	63	44,100	69	44,100	69	43,300	73	39,100	73	32,600	76	32,400	76	28,100	
30'			46	45,900	59	45,000	58	44,100	65	44,100	65	37,200	70	38,800	69	29,500	73	31,500	73	25,200	
35'			36	33,900	52	32,900	52	38,300	60	34,600	60	32,400	66	34,700	66	25,900	70	30,600	70	23,500	
40'			21	26,100	45	25,300	45	30,200	55	26,800	55	28,500	62	27,700	62	23,100	67	27,700	67	20,900	
45'					38	19,900	38	24,600	50	21,300	50	24,800	58	22,200	58	20,900	63	22,800	63	18,800	
50'					29	15,900	28	20,500	45	17,300	45	20,700	54	18,100	54	19,000	60	18,700	60	17,100	
55'					13	11,100	11	14,000	38	14,200	38	17,500	49	15,000	49	17,400	56	15,500	56	15,500	
60'									31	11,700	31	15,000	45	12,500	45	15,200	53	13,100	53	14,000	
65'									22	9,700	22	13,000	40	10,500	40	13,200	49	11,000	49	12,800	
70'													34	8,900	34	11,500	45	9,400	45	11,600	
75'													26	7,500	26	10,100	40	8,000	40	10,300	
80'													15	6,300	18	9,000	35	6,800	35	9,100	
85'																	29	5,800	29	8,000	
90'																	21	5,000	21	7,200	
95'																					
100'																	31	4,500	31	6,400	
105'																	25	3,900	25	5,800	
110'																	16	3,300	16	5,200	
115'																					
120'																			21	3,300	
125'																			8	2,900	
130'																				24	1,800
130'																				17	1,500
D	0																				
Telescoping conditions (%)																					
Telescoping mode	I, II	I	I	II	I	II	I	II	I	II	I	II	I	II	II	I, II					
2nd boom	0	50	100	0	100	0	100	0	100	0	100	0	100	0	50	100					
3rd boom	0	0	0	33	16	50	33	66	50	83	66	100	100	100	100						
4th boom	0	0	0	33	16	50	33	66	50	83	66	100	100	100							
Top boom	0	0	0	33	16	50	33	66	50	83	66	100	100	100							

COUNTERWEIGHT 12,500 lbs (5.7 t)																												
LIFTING CAPACITIES AT ZERO DEGREE BOOM ANGLE ON OUTRIGGERS FULLY EXTENDED																												
23' 11-3/8" (7.3 m) SPREAD 360° ROTATION																												
C	36.1'		49.2'		62.3'		62.3'		75.5'		75.5'		88.6'		88.6'		101.7'		101.7'		114.8'		114.8'		128.0'	141.1'		
	B	(11 m)	B	(15 m)	B	(19 m)	B	(19 m)	B	(23 m)	B	(23 m)	B	(27 m)	B	(27 m)	B	(31 m)	B	(31 m)	B	(35 m)	B	(35 m)	B	(39 m)	B	(43 m)
0	28.9	26,000	42.0	16,800	55.4	10,800	55.4	13,700	68.6	7,900	68.6	10,100	81.7	6,000	81.7	8,400	94.2	4,400	94.5	6,600	107.0	3,100	107.0	4,600	119.8	2,900	132.5	1,100
Telescoping	I, II	I	I	II	I	II	I	II	I	II	I	II	I	II	I	II	I	II	I	II	I	II	I	II	II	I, II		

- A : Boom length in feet
- B : Load radius in feet
- C : Loaded boom angle (°)
- D : Minimum boom angle (°) for indicated length (no load)

NOTE: The lifting capacity data stored in the LOAD MOMENT INDICATOR (AML-C) is based on the standard number of parts of line listed in the chart.

Standard number of parts of line for each boom length should be according to the following table.

Boom length in feet	36.1'	36.1' to 49.2'	49.2' to 62.3'	62.3' to 141.1'	Single top
(meters)	(11 m)	(11 m to 15 m)	(15 m to 19 m)	(19 m to 43 m)	Jib
Telescoping mode	I, II	I	I	II	I, II
Number of parts of line	14	8	6	4	4

**GR-750XL RATED LIFTING CAPACITIES (IN POUNDS)**

**COUNTERWEIGHT 12,500 lbs (5.7 t)  
ON OUTRIGGERS FULLY EXTENDED 23' 11-3/8" (7.3 m) SPREAD  
360° ROTATION**

C	141.1' (43.0 m) Boom + 33.2' (10.1 m) Jib						141.1' (43.0 m) Boom + 58.1' (17.7 m) Jib					
	3.5° Tilt		25° Tilt		45° Tilt		3.5° Tilt		25° Tilt		45° Tilt	
	R	W	R	W	R	W	R	W	R	W	R	W
80	35.1'	9,300	48.6'	8,800	55.4'	7,500	43.0'	5,700	65.6'	5,200	76.8'	3,900
79	38.7'	9,300	51.8'	8,500	58.4'	7,300	47.2'	5,700	69.2'	5,000	80.1'	3,800
78	42.0'	9,300	54.8'	8,200	61.0'	7,100	51.2'	5,700	72.5'	4,900	83.3'	3,700
77	45.3'	9,300	58.1'	8,000	64.3'	6,900	55.1'	5,700	75.8'	4,700	86.0'	3,700
76	48.9'	9,300	61.0'	7,800	66.9'	6,700	58.7'	5,700	79.1'	4,600	89.2'	3,600
75	52.5'	9,300	64.0'	7,500	69.9'	6,600	62.7'	5,700	82.3'	4,400	92.2'	3,500
73	59.1'	9,100	69.9'	7,200	75.1'	6,300	70.2'	5,700	88.9'	4,100	97.8'	3,400
70	67.9'	8,200	78.4'	6,700	83.3'	5,900	81.4'	5,600	98.8'	3,800	106.0'	3,200
68	73.8'	7,800	84.0'	6,400	87.6'	5,700	87.9'	5,300	105.0'	3,600	111.2'	3,000
65	83.7'	7,200	91.9'	6,000	95.1'	5,400	97.1'	4,700	113.2'	3,300	118.8'	2,900
63	87.3'	6,700	96.8'	5,800	99.7'	5,200	103.0'	4,400	118.8'	3,200	123.7'	2,800
60	94.5'	5,800	103.7'	5,200	106.3'	4,900	111.9'	3,900	127.0'	3,000	130.9'	2,600
58	99.4'	5,100	107.9'	4,600	110.6'	4,300	116.8'	3,500	131.9'	2,800	135.2'	2,600
55	106.3'	4,100	114.2'	3,800	116.1'	3,500	124.3'	2,800	138.5'	2,300	141.1'	2,100
53	110.6'	3,600	118.1'	3,300	119.8'	3,100	129.3'	2,300	142.7'	1,900	144.7'	1,700
50	116.8'	2,900	124.0'	2,700	125.0'	2,600	136.2'	1,800	148.6'	1,400	149.9'	1,300
48	120.7'	2,500	127.6'	2,300	128.3'	2,200	140.7'	1,400	152.6'	1,200	153.2'	1,100
45	126.6'	2,000	132.5'	1,900	133.2'	1,800	147.3'	1,000				
43	130.2'	1,700	135.8'	1,600								
40	135.5'	1,300	140.7'	1,200								
38	139.1'	1,100	143.7'	1,000								

**COUNTERWEIGHT 12,500 lbs (5.7 t)  
ON OUTRIGGERS FULLY EXTENDED 23' 11-3/8" (7.3 m) SPREAD  
360° ROTATION**

C	128.0' (39.0 m) Boom (telescoping mode II) + 33.2' (10.1 m) Jib						128.0' (39.0 m) Boom (telescoping mode II) + 58.1' (17.7 m) Jib					
	3.5° Tilt		25° Tilt		45° Tilt		3.5° Tilt		25° Tilt		45° Tilt	
	R	W	R	W	R	W	R	W	R	W	R	W
80	30.8'	10,100	44.0'	9,500	51.5'	7,700	38.7'	6,200	60.7'	5,500	72.5'	4,100
79	34.1'	10,100	46.9'	9,200	54.1'	7,500	42.7'	6,200	64.0'	5,300	75.1'	3,900
78	37.4'	10,100	49.5'	8,900	56.8'	7,300	45.9'	6,200	67.3'	5,100	78.1'	3,900
77	40.4'	10,100	52.5'	8,600	59.4'	7,200	49.9'	6,200	70.2'	4,900	80.7'	3,800
76	43.3'	10,100	55.1'	8,400	61.7'	7,000	53.5'	6,200	73.5'	4,800	83.3'	3,700
75	46.6'	10,100	58.1'	8,200	64.0'	6,800	56.8'	6,200	76.1'	4,600	86.0'	3,600
73	52.5'	10,000	63.3'	7,700	68.9'	6,500	64.3'	6,200	82.3'	4,300	91.2'	3,400
70	60.7'	9,100	70.9'	7,100	76.4'	6,100	74.1'	6,000	91.2'	3,900	98.8'	3,200
68	65.9'	8,600	76.1'	6,800	80.7'	5,800	80.1'	5,500	96.5'	3,700	103.7'	3,100
65	73.8'	7,900	83.3'	6,300	87.3'	5,500	88.6'	4,900	104.7'	3,400	110.6'	2,900
63	78.7'	7,600	87.9'	6,000	91.5'	5,300	94.2'	4,600	109.6'	3,300	115.8'	2,800
60	86.3'	6,700	94.5'	5,600	97.8'	5,000	102.7'	4,100	117.1'	3,000	122.7'	2,700
58	90.6'	6,200	99.1'	5,400	101.7'	4,900	107.6'	3,900	122.4'	2,900	127.3'	2,600
55	97.1'	5,500	105.3'	4,900	107.6'	4,700	115.5'	3,500	129.3'	2,800	133.5'	2,500
53	101.4'	5,100	108.9'	4,700	110.9'	4,500	120.4'	3,400	133.9'	2,600	137.5'	2,400
50	107.6'	4,700	114.8'	4,300	116.1'	4,100	127.3'	3,100	140.4'	2,500	143.0'	2,400
48	111.5'	4,300	118.1'	3,900	119.1'	3,800	131.6'	2,800	144.4'	2,400	146.3'	2,300
45	116.8'	3,700	123.0'	3,400	123.4'	3,300	137.5'	2,400	149.3'	2,000	149.9'	1,900
43	120.4'	3,300	126.0'	3,100			141.4'	2,100	152.6'	1,800		
40	125.0'	2,900	130.2'	2,700			147.0'	1,700	156.8'	1,500		
38	128.3'	2,600	132.9'	2,400			150.3'	1,500	159.4'	1,300		
35	132.5'	2,300	136.5'	2,100			155.2'	1,200	162.7'	1,100		
33	135.5'	2,100	138.8'	1,900			158.1'	1,100	165.0'	900		
30	139.1'	1,800	142.1'	1,700								
25	144.4'	1,500	146.3'	1,400								
20	148.6'	1,200										
15	151.6'	1,000										

**COUNTERWEIGHT 12,500 lbs (5.7 t)  
ON OUTRIGGERS FULLY EXTENDED 23' 11-3/8" (7.3 m) SPREAD  
360° ROTATION**

C	114.8' (35 m) Boom (telescoping mode I) + 33.2' (10.1 m) Jib						114.8' (35 m) Boom (telescoping mode I) + 58.1' (17.7 m) Jib					
	3.5° Tilt		25° Tilt		45° Tilt		3.5° Tilt		25° Tilt		45° Tilt	
	R	W	R	W	R	W	R	W	R	W	R	W
80	28.2'	12,300	40.4'	11,300	47.6'	8,700	35.1'	7,100	56.8'	6,200	68.9'	4,500
79	30.8'	12,300	42.7'	10,400	49.5'	8,300	38.4'	7,100	59.4'	5,600	71.2'	4,200
78	33.8'	12,300	45.6'	10,400	52.2'	8,300	41.7'	7,100	62.7'	5,600	73.8'	4,200
77	36.7'	12,300	48.2'	10,400	54.8'	8,200	44.9'	7,100	65.6'	5,600	76.8'	4,200
76	39.7'	12,300	50.5'	10,100	56.8'	8,000	48.2'	7,100	68.6'	5,500	79.1'	4,200
75	42.3'	12,300	53.1'	9,900	59.1'	7,800	51.2'	7,100	71.2'	5,400	81.7'	4,100
73	47.6'	12,300	58.1'	9,300	63.6'	7,600	57.7'	7,100	76.8'	5,000	86.3'	4,000
70	55.1'	11,400	65.0'	8,600	70.2'	7,200	67.3'	7,100	84.6'	4,700	93.2'	3,800
68	60.0'	10,800	69.6'	8,200	74.1'	6,900	72.8'	6,800	89.9'	4,500	97.8'	3,600
65	67.3'	10,100	76.1'	7,700	80.4'	6,600	81.0'	6,100	97.8'	4,200	104.0'	3,500
63	71.9'	9,600	80.4'	7,300	84.3'	6,400	86.0'	5,700	102.0'	4,000	108.3'	3,400
60	78.4'	9,000	86.6'	6,900	89.9'	6,200	93.5'	5,200	108.9'	3,800	114.2'	3,300
58	82.3'	8,300	90.6'	6,700	93.5'	6,000	98.4'	4,900	113.5'	3,600	117.8'	3,200
55	88.3'	7,000	95.8'	6,200	98.8'	5,800	106.0'	4,500	119.8'	3,400	123.0'	3,100
53	92.2'	6,300	99.4'	5,600	101.7'	5,300	110.2'	4,300	123.7'	3,400	126.3'	3,100
50	97.4'	5,300	104.7'	4,800	106.3'	4,600	116.5'	3,800	129.3'	3,100	130.9'	2,800
48	101.0'	4,800	107.6'	4,300	108.9'	4,200	120.4'	3,200	132.5'	2,700	133.5'	2,500
45	106.0'	4,100	112.2'	3,700	113.2'	3,600	126.3'	2,700	137.5'	2,300	137.5'	2,100
43	109.3'	3,700	114.8'	3,400			129.9'	2,300	140.4'	2,000		
40	113.8'	3,200	119.1'	3,000			135.2'	1,900	144.7'	1,700		
38	116.8'	2,900	121.4'	2,700			138.5'	1,700	147.0'	1,500		
35	121.1'	2,500	125.0'	2,300			142.7'	1,400	150.6'	1,200		
33	123.4'	2,300	127.0'	2,100			145.7'	1,200	152.9'	1,100		
30	127.0'	2,000	129.9'	1,900			149.6'	1,000				
25	132.2'	1,600	133.9'	1,500								
20	136.2'	1,300										
15	139.1'	1,100										

C : Loaded boom angle (°)  
R : Load radius in feet  
W : Rated lifting capacity in pounds



## GR-750XL RATED LIFTING CAPACITIES (IN POUNDS)

COUNTERWEIGHT 12,500 lbs (5.7 t) ON OUTRIGGERS MID EXTENDED 21' 11-3 / 4" (6.7 m) SPREAD 360° ROTATION																			
A B	36.1' (11 m)		49.2' (15 m)		62.3' (19 m)		75.5' (23 m)		88.6' (27 m)		101.7' (31 m)		114.8' (35 m)		128.0' (39 m)	141.1' (43 m)			
	C	C	C	C	C	C	C	C	C	C	C	C	C	C	C	C			
8'	72	150,000	77	90,000															
10'	68	130,000	75	90,000	79	70,500	78	44,100											
12'	64	113,600	72	90,000	77	70,500	76	44,100	79	44,100	79	44,100							
15'	58	94,800	68	90,000	73	70,500	73	44,100	77	44,100	77	44,100	79	44,100					
20'	48	72,700	62	72,200	69	69,600	69	44,100	73	44,100	73	44,100	76	42,400	76	37,100	78	36,600	
25'	33	54,300	55	52,700	64	51,700	63	44,100	69	44,100	69	43,300	73	39,100	73	32,600	76	28,100	
30'			47	36,200	58	35,300	58	40,900	65	37,100	65	37,200	70	38,100	69	29,500	73	30,600	
35'			36	26,500	52	25,700	52	30,800	60	27,300	60	31,300	66	28,200	66	25,900	70	28,900	
40'			22	20,100	45	19,500	45	24,300	55	20,900	55	24,800	62	21,800	62	23,100	67	22,500	
45'					38	15,000	37	19,600	50	16,400	50	20,100	58	17,300	58	20,400	63	17,900	
50'					28	11,700	27	16,100	45	13,100	45	16,600	54	13,900	54	16,900	60	14,500	
55'					11	9,100	10	13,400	38	10,500	38	14,000	49	11,400	49	14,300	56	11,900	
60'									31	8,400	31	11,800	45	9,300	45	12,100	52	9,800	
65'									21	6,700	21	10,100	39	7,600	39	10,400	49	8,100	
70'													34	6,200	34	8,900	45	6,700	
75'													26	5,000	26	7,700	40	5,600	
80'													15	4,000	15	6,700	35	4,500	
85'																	29	3,700	
90'																	21	2,900	
95'																	31	2,600	
100'																	24	2,000	
105'																	15	1,500	
110'																		27	2,200
115'																		20	1,800
120'																		8	1,500
D	0															33			
Telescoping conditions (%)																			
Telescoping mode	I, II	I	I	I	II	I	II	I	II	I	II	I	II	I	II	II	I, II		
2nd boom	0	50	100	0	100	0	100	0	100	0	100	0	100	0	100	50	100		
3rd boom	0	0	0	33	16	50	33	66	50	83	66	100	100	100	100	100			
4th boom	0	0	0	33	16	50	33	66	50	83	66	100	100	100	100	100			
Top boom	0	0	0	33	16	50	33	66	50	83	66	100	100	100	100	100			

COUNTERWEIGHT 12,500 lbs (5.7 t) LIFTING CAPACITIES AT ZERO DEGREE BOOM ANGLE ON OUTRIGGERS MID EXTENDED 21' 11-3 / 4" (6.7 m) SPREAD 360° ROTATION																										
A C	36.1' (11 m)		49.2' (15 m)		62.3' (19 m)		62.3' (19 m)		75.5' (23 m)		75.5' (23 m)		88.6' (27 m)		88.6' (27 m)		101.7' (31 m)		101.7' (31 m)		114.8' (35 m)		114.8' (35 m)		128.0' (39 m)	
	B	B	B	B	B	B	B	B	B	B	B	B	B	B	B	B	B	B	B	B	B	B	B	B	B	B
0	28.9	26,000	42.3	16,100	55.4	9,000	55.1	13,200	68.6	5,700	68.6	9,000	81.7	3,700	81.7	6,400	94.5	2,400	94.2	4,600	107.0	1,300	107.0	3,100	119.8	1,500
Telescoping	I, II	I	I	I	II	I	II	I	II	I	II	I	II	I	II	I	II	I	II	I	II	I	II	II	II	

- A : Boom length in feet
- B : Load radius in feet
- C : Loaded boom angle (°)
- D : Minimum boom angle (°) for indicated length (no load)

NOTE: The lifting capacity data stored in the LOAD MOMENT INDICATOR (AML-C) is based on the standard number of parts of line listed in the chart.  
Standard number of parts of line for each boom length should be according to the following table.

Boom length in feet (meters)	36.1' (11 m)	36.1' to 49.2' (11 m to 15 m)	49.2' to 62.3' (15 m to 19 m)		62.3' to 141.1' (19 m to 43 m)	Single top Jib
Telescoping mode	I, II	I	I	II	I, II	I, II
Number of parts of line	14	8	6	4	4	1

# GR-750XL RATED LIFTING CAPACITIES (IN POUNDS)

## COUNTERWEIGHT 12,500 lbs (5.7 t) ON OUTRIGGERS MID EXTENDED 21' 11-3 / 4" (6.7 m) SPREAD 360° ROTATION

C	141.1' (43.0 m) Boom + 33.2' (10.1 m) Jib						C	141.1' (43.0 m) Boom + 58.1' (17.7 m) Jib					
	3.5° Tilt		25° Tilt		45° Tilt			3.5° Tilt		25° Tilt		45° Tilt	
	R	W	R	W	R	W		R	W	R	W	R	W
80	35.1'	9,300	48.6'	8,800	55.4'	7,500	43.0'	5,700	65.6'	5,200	76.8'	3,900	
79	38.7'	9,300	51.8'	8,500	58.4'	7,300	47.2'	5,700	69.2'	5,000	80.1'	3,800	
78	42.0'	9,300	54.8'	8,200	61.0'	7,100	51.2'	5,700	72.5'	4,900	83.3'	3,700	
77	45.3'	9,300	58.1'	8,000	64.3'	6,900	55.1'	5,700	75.8'	4,700	86.0'	3,700	
76	48.9'	9,300	61.0'	7,800	66.9'	6,700	58.7'	5,700	79.1'	4,600	89.2'	3,600	
75	52.5'	9,300	64.0'	7,500	69.9'	6,600	62.7'	5,700	82.3'	4,400	92.2'	3,500	
73	59.1'	9,100	69.9'	7,200	75.1'	6,300	70.2'	5,700	88.9'	4,100	97.8'	3,400	
70	67.9'	8,200	78.4'	6,700	83.3'	5,900	81.4'	5,600	98.8'	3,800	106.0'	3,200	
68	73.8'	7,800	84.0'	6,400	87.6'	5,700	87.9'	5,300	105.0'	3,600	111.2'	3,000	
65	81.4'	6,100	90.9'	5,200	94.5'	4,800	96.1'	4,100	112.5'	3,200	118.4'	2,800	
63	86.0'	5,200	95.5'	4,500	98.8'	4,100	101.4'	3,400	117.8'	2,600	123.0'	2,300	
60	93.2'	4,000	102.0'	3,500	105.0'	3,200	109.3'	2,500	125.0'	1,900	129.3'	1,700	
58	97.8'	3,300	106.3'	2,900	108.9'	2,700	113.2'	2,000	129.3'	1,500	133.5'	1,300	
55	104.7'	2,500	112.5'	2,200	114.8'	2,000	122.0'	1,300	136.2'	1,000	139.4'	900	
53	108.9'	2,000	116.8'	1,800	118.4'	1,600	126.6'	900					
50	115.2'	1,400	122.7'	1,200	123.7'	1,100							
48	119.4'	1,100	126.3'	900	127.3'	900							

## COUNTERWEIGHT 12,500 lbs (5.7 t) ON OUTRIGGERS MID EXTENDED 21' 11-3 / 4" (6.7 m) SPREAD 360° ROTATION

C	128.0' (39.0 m) Boom (telescoping mode II) + 33.2' (10.1 m) Jib						C	128.0' (39.0 m) Boom (telescoping mode II) + 58.1' (17.7 m) Jib					
	3.5° Tilt		25° Tilt		45° Tilt			3.5° Tilt		25° Tilt		45° Tilt	
	R	W	R	W	R	W		R	W	R	W	R	W
80	30.8'	10,100	44.0'	9,500	51.5'	7,700	38.7'	6,200	60.7'	5,500	72.5'	4,100	
79	34.1'	10,100	46.9'	9,200	54.1'	7,500	42.7'	6,200	64.0'	5,300	75.1'	3,900	
78	37.4'	10,100	49.5'	8,900	56.8'	7,300	45.9'	6,200	67.3'	5,100	78.1'	3,900	
77	40.4'	10,100	52.5'	8,600	59.4'	7,200	49.9'	6,200	70.2'	4,900	80.7'	3,800	
76	43.3'	10,100	55.1'	8,400	61.7'	7,000	53.5'	6,200	73.5'	4,800	83.3'	3,700	
75	46.6'	10,100	58.1'	8,200	64.0'	6,800	56.8'	6,200	76.1'	4,600	86.0'	3,600	
73	52.5'	10,000	63.3'	7,700	68.9'	6,500	64.3'	6,200	82.3'	4,300	91.2'	3,400	
70	60.7'	9,100	70.9'	7,100	76.4'	6,100	74.1'	6,000	91.2'	3,900	98.8'	3,200	
68	65.9'	8,600	76.1'	6,800	80.7'	5,800	80.1'	5,500	96.5'	3,700	103.7'	3,100	
65	73.8'	7,900	83.3'	6,300	87.3'	5,500	88.6'	4,900	104.7'	3,400	110.6'	2,900	
63	79.1'	7,400	87.9'	6,000	91.5'	5,300	94.2'	4,600	109.6'	3,300	115.8'	2,800	
60	85.6'	6,000	94.5'	5,200	97.8'	4,900	102.7'	4,100	117.1'	3,000	122.7'	2,700	
58	89.9'	5,200	98.4'	4,600	101.4'	4,300	107.3'	3,500	122.4'	2,800	127.3'	2,500	
55	96.5'	4,300	104.3'	3,800	107.0'	3,600	114.2'	2,800	128.6'	2,200	132.9'	2,000	
53	100.4'	3,700	107.9'	3,300	110.6'	3,200	119.1'	2,300	132.5'	1,900	136.2'	1,700	
50	106.3'	3,000	113.5'	2,700	115.5'	2,600	125.7'	1,800	138.5'	1,400	141.1'	1,300	
48	110.2'	2,600	116.8'	2,400	118.4'	2,300	129.9'	1,500	142.1'	1,200	143.7'	1,100	
45	115.5'	2,100	121.7'	1,900	123.0'	1,800	136.2'	1,000	147.3'	900			
43	119.1'	1,800	125.0'	1,700			140.1'	900					
40	124.3'	1,400	129.6'	1,300									
38	127.3'	1,200	132.2'	1,100									
35	131.9'	900	136.2'	900									

## COUNTERWEIGHT 12,500 lbs (5.7 t) ON OUTRIGGERS MID EXTENDED 21' 11-3 / 4" (6.7 m) SPREAD 360° ROTATION

C	114.8' (35 m) Boom (telescoping mode I) + 33.2' (10.1 m) Jib						C	114.8' (35 m) Boom (telescoping mode I) + 58.1' (17.7 m) Jib					
	3.5° Tilt		25° Tilt		45° Tilt			3.5° Tilt		25° Tilt		45° Tilt	
	R	W	R	W	R	W		R	W	R	W	R	W
80	28.2'	12,300	40.4'	11,300	47.6'	8,700	35.1'	7,100	56.8'	6,200	68.9'	4,500	
79	30.8'	12,300	42.7'	10,400	49.5'	8,300	38.4'	7,100	59.4'	5,600	71.2'	4,200	
78	33.8'	12,300	45.6'	10,400	52.2'	8,300	41.7'	7,100	62.7'	5,600	73.8'	4,200	
77	36.7'	12,300	48.2'	10,400	54.8'	8,200	44.9'	7,100	65.6'	5,600	76.8'	4,200	
76	39.7'	12,300	50.5'	10,100	56.8'	8,000	48.2'	7,100	68.6'	5,500	79.1'	4,200	
75	42.3'	12,300	53.1'	9,900	59.1'	7,800	51.2'	7,100	71.2'	5,400	81.7'	4,100	
73	47.6'	12,300	58.1'	9,300	63.6'	7,600	57.7'	7,100	76.8'	5,000	86.3'	4,000	
70	55.1'	11,400	65.0'	8,600	70.2'	7,200	67.3'	7,100	84.6'	4,700	93.2'	3,800	
68	60.0'	10,800	69.6'	8,200	74.1'	6,900	72.8'	6,800	89.9'	4,500	97.8'	3,600	
65	66.9'	9,800	76.1'	7,700	80.4'	6,600	81.0'	6,100	97.8'	4,200	104.0'	3,500	
63	71.2'	8,500	80.4'	7,100	84.3'	6,400	86.0'	5,700	102.0'	4,000	108.3'	3,400	
60	77.4'	6,800	86.0'	5,900	89.6'	5,400	93.2'	4,700	108.9'	3,700	114.2'	3,300	
58	81.4'	6,000	89.6'	5,200	92.8'	4,800	97.8'	4,000	112.9'	3,200	117.5'	2,800	
55	87.3'	4,900	95.1'	4,200	98.1'	4,000	104.3'	3,200	119.1'	2,500	122.7'	2,300	
53	90.9'	4,200	98.8'	3,700	101.0'	3,500	108.6'	2,700	122.7'	2,200	126.0'	1,900	
50	96.5'	3,400	103.7'	3,000	105.6'	2,900	114.8'	2,100	128.3'	1,700	130.2'	1,500	
48	100.1'	3,000	107.0'	2,600	108.3'	2,500	119.1'	1,700	131.6'	1,400	133.5'	1,200	
45	105.3'	2,400	111.5'	2,100	112.5'	2,000	125.0'	1,200	136.5'	1,000	137.5'	900	
43	108.6'	2,000	114.2'	1,800			128.6'	900					
40	113.2'	1,600	118.4'	1,400									
38	116.1'	1,300	121.1'	1,200									
35	120.4'	1,000	124.3'	1,000									

C :Loaded boom angle (°)  
R :Load radius in feet  
W :Rated lifting capacity in pounds

## GR-750XL RATED LIFTING CAPACITIES (IN POUNDS)

COUNTERWEIGHT 12,500 lbs (5.7 t) ON OUTRIGGERS MID EXTENDED 18' 1/2" (5.5 m) SPREAD 360° ROTATION																												
A B	36.1' (11 m)		49.2' (15 m)		62.3' (19 m)		75.5' (23 m)		88.6' (27 m)		101.7' (31 m)		114.8' (35 m)		128.0' (39 m)	141.1' (43 m)												
	C	C	C	C	C	C	C	C	C	C	C	C	C	C	C	C												
8'	72	150,000	77	90,000																								
10'	68	121,200	75	90,000	79	70,500	78	44,100																				
12'	64	105,100	72	90,000	77	70,500	76	44,100	79	44,100	79	44,100																
15'	58	87,000	68	86,500	73	70,500	73	44,100	77	44,100	77	44,100	79	44,100														
20'	48	61,000	62	60,000	69	59,200	69	44,100	73	44,100	73	44,100	76	42,400	76	37,100	78	31,700										
25'	33	38,700	54	37,800	64	37,300	63	42,900	69	39,100	69	43,300	73	39,100	73	32,600	76	32,400	76	28,100	78	28,500	78	24,600	79	22,000		
30'			46	26,200	58	25,700	58	30,800	65	27,500	65	31,500	69	28,500	69	29,500	73	29,200	73	25,200	75	26,300	75	22,200	77	22,000	79	19,800
35'			35	19,000	52	18,500	52	23,300	60	20,200	60	24,000	66	21,200	66	24,400	70	21,900	70	23,500	73	22,300	73	20,100	75	20,300	77	18,500
40'			21	14,200	45	13,700	45	18,200	55	15,300	55	18,900	62	16,300	62	19,300	66	17,000	66	19,600	70	17,400	70	18,700	73	18,700	75	17,200
45'					38	10,200	38	14,600	50	11,700	50	15,200	58	12,700	58	15,600	63	13,300	63	15,900	67	13,800	67	16,100	70	15,200	73	14,200
50'					29	7,600	28	11,800	45	9,100	45	12,400	54	10,000	54	12,800	60	10,600	60	13,100	64	11,100	64	13,300	68	12,400	71	11,700
55'					12	5,600	11	9,700	38	7,000	38	10,300	49	7,800	49	10,600	56	8,500	56	10,900	61	9,000	61	11,100	65	10,300	68	9,600
60'									31	5,300	31	8,600	45	6,200	44	8,900	52	6,800	52	9,200	58	7,200	58	9,300	62	8,500	66	7,800
65'									22	3,900	21	7,200	39	4,800	39	7,500	48	5,400	48	7,700	55	5,800	55	7,900	60	7,100	63	6,400
70'													34	3,600	34	6,300	45	4,200	45	6,500	52	4,700	52	6,700	57	5,900	61	5,200
75'													26	2,700	25	5,300	39	3,200	39	5,500	48	3,700	48	5,700	54	4,900	58	4,200
80'													15	1,900	15	4,500	34	2,400	34	4,700	44	2,800	44	4,800	50	4,000	56	3,400
85'																	28	1,700	29	3,900	40	2,100	40	4,100	47	3,300	53	2,600
90'																			21	3,300	36	1,500	36	3,400	44	2,600	50	2,000
95'																							30	2,900	40	2,100	47	1,400
100'																							24	2,400	36	1,600		
105'																							15	2,000				
D																	21		0		24		0		32		45	

### Telescoping conditions (%)

Telescoping mode	I, II	I	I	II	I	II	I	II	I	II	I	II	II	I, II
2nd boom	0	50	100	0	100	0	100	0	100	0	100	0	50	100
3rd boom	0	0	0	33	16	50	33	66	50	83	66	100	100	100
4th boom	0	0	0	33	16	50	33	66	50	83	66	100	100	100
Top boom	0	0	0	33	16	50	33	66	50	83	66	100	100	100

COUNTERWEIGHT 12,500 lbs (5.7 t) LIFTING CAPACITIES AT ZERO DEGREE BOOM ANGLE ON OUTRIGGERS MID EXTENDED 18' 1/2" (5.5 m) SPREAD 360° ROTATION																										
A C	36.1' (11 m)		49.2' (15 m)		62.3' (19 m)		75.5' (23 m)		88.6' (27 m)		101.7' (31 m)		114.8' (35 m)													
	B	B	B	B	B	B	B	B	B	B	B	B	B	B												
0	28.9	25,800	42.3	12,600	55.4	5,500	55.4	9,700	71.9	3,100	68.6	6,400	81.7	1,800	81.7	4,200	94.5	2,900	107.0	1,300						
Telescoping	I, II		I		I		II		I		II		I		II		II		II		II					

- A : Boom length in feet
- B : Load radius in feet
- C : Loaded boom angle (°)
- D : Minimum boom angle (°) for indicated length (no load)

NOTE: The lifting capacity data stored in the LOAD MOMENT INDICATOR (AML-C) is based on the standard number of parts of line listed in the chart.  
Standard number of parts of line for each boom length should be according to the following table.

Boom length in feet (meters)	36.1' (11 m)	36.1' to 49.2' (11 m to 15 m)	49.2' to 62.3' (15 m to 19 m)	62.3' to 141.1' (19 m to 43 m)	Single top Jib
Telescoping mode	I, II	I	I	I, II	I, II
Number of parts of line	14	8	6	4	1

# GR-750XL RATED LIFTING CAPACITIES (IN POUNDS)

## COUNTERWEIGHT 12,500 lbs (5.7 t) ON OUTRIGGERS MID EXTENDED 18' 1/2" (5.5 m) SPREAD 360° ROTATION

C	141.1' (43.0 m) Boom + 33.2' (10.1 m) Jib					
	3.5° Tilt		25° Tilt		45° Tilt	
	R	W	R	W	R	W
80	35.1'	9,300	48.6'	8,800	55.4'	7,500
79	38.7'	9,300	51.8'	8,500	58.4'	7,300
78	42.0'	9,300	54.8'	8,200	61.0'	7,100
77	45.3'	9,300	58.1'	8,000	64.3'	6,900
76	48.9'	9,300	61.0'	7,800	66.9'	6,700
75	52.5'	9,300	64.0'	7,500	69.9'	6,600
73	58.4'	8,300	69.6'	6,900	74.8'	6,200
70	66.3'	6,200	76.8'	5,300	81.7'	4,800
68	71.5'	5,100	81.7'	4,400	86.3'	4,100
65	79.1'	3,800	90.9'	3,300	92.8'	3,000
63	84.0'	3,000	93.5'	2,700	97.1'	2,400
60	91.5'	2,100	100.4'	1,900	103.7'	1,700
58	96.1'	1,600	105.0'	1,400	107.6'	1,300
55	103.0'	900				

C	141.1' (43.0 m) Boom + 58.1' (17.7 m) Jib					
	3.5° Tilt		25° Tilt		45° Tilt	
	R	W	R	W	R	W
80	43.0'	5,700	65.6'	5,200	76.8'	3,900
79	47.2'	5,700	69.2'	5,000	80.1'	3,800
78	51.2'	5,700	72.5'	4,900	83.3'	3,700
77	55.1'	5,700	75.8'	4,700	86.0'	3,700
76	58.7'	5,700	79.1'	4,600	89.2'	3,600
75	62.7'	5,700	82.3'	4,400	92.2'	3,500
73	69.9'	5,400	88.9'	4,100	97.8'	3,400
70	78.7'	3,900	96.8'	3,000	105.3'	2,700
68	84.3'	3,100	102.0'	2,400	109.6'	2,200
65	92.5'	2,100	109.6'	1,600	116.5'	1,500
63	98.1'	1,500	114.8'	1,100	121.4'	1,100
60	107.0'	1,100				

## COUNTERWEIGHT 12,500 lbs (5.7 t) ON OUTRIGGERS MID EXTENDED 18' 1/2" (5.5 m) SPREAD 360° ROTATION

C	128.0' (39.0 m) Boom (telescoping mode II) + 33.2' (10.1 m) Jib					
	3.5° Tilt		25° Tilt		45° Tilt	
	R	W	R	W	R	W
80	30.8'	10,100	44.0'	9,500	51.5'	7,700
79	34.1'	10,100	46.9'	9,200	54.1'	7,500
78	37.4'	10,100	49.5'	8,900	56.8'	7,300
77	40.4'	10,100	52.5'	8,600	59.4'	7,200
76	43.3'	10,100	55.1'	8,400	61.7'	7,000
75	46.6'	10,100	58.1'	8,200	64.0'	6,800
73	52.5'	10,000	63.3'	7,700	68.9'	6,500
70	60.7'	9,100	70.9'	7,100	76.4'	6,100
68	65.6'	7,700	75.8'	6,400	80.7'	5,800
65	72.5'	6,000	82.3'	5,100	86.6'	4,700
63	77.1'	5,100	86.6'	4,400	90.6'	4,000
60	84.0'	4,000	92.8'	3,400	96.5'	3,200
58	88.3'	3,300	96.8'	2,900	100.4'	2,700
55	94.8'	2,500	102.7'	2,200	106.0'	2,100
53	98.8'	2,100	106.6'	1,800	109.3'	1,700
50	105.0'	1,500	112.2'	1,300	114.2'	1,200
48	108.9'	1,200	115.8'	1,000	117.5'	900

C	128.0' (39.0 m) Boom (telescoping mode II) + 58.1' (17.7 m) Jib					
	3.5° Tilt		25° Tilt		45° Tilt	
	R	W	R	W	R	W
80	38.7'	6,200	60.7'	5,500	72.5'	4,100
79	42.7'	6,200	64.0'	5,300	75.1'	3,900
78	45.9'	6,200	67.3'	5,100	78.1'	3,900
77	49.9'	6,200	70.2'	4,900	80.7'	3,800
76	53.5'	6,200	73.5'	4,800	83.3'	3,700
75	56.8'	6,200	76.1'	4,600	86.0'	3,600
73	64.3'	6,200	82.3'	4,300	91.2'	3,400
70	74.1'	6,000	91.2'	3,900	98.8'	3,200
68	79.4'	5,100	96.5'	3,700	103.7'	3,100
65	87.6'	3,900	104.0'	3,100	110.2'	2,700
63	92.5'	3,300	108.6'	2,600	114.8'	2,200
60	100.1'	2,400	115.2'	1,900	121.1'	1,700
58	105.0'	2,000	119.8'	1,500	125.0'	1,300
55	112.2'	1,300	126.3'	1,000		
53	117.1'	1,000				

## COUNTERWEIGHT 12,500 lbs (5.7 t) ON OUTRIGGERS MID EXTENDED 18' 1/2" (5.5 m) SPREAD 360° ROTATION

C	114.8' (35 m) Boom (telescoping mode I) + 33.2' (10.1 m) Jib					
	3.5° Tilt		25° Tilt		45° Tilt	
	R	W	R	W	R	W
80	28.2'	12,300	40.4'	11,300	47.6'	8,700
79	30.8'	12,300	42.7'	10,400	49.5'	8,300
78	33.8'	12,300	45.6'	10,400	52.2'	8,300
77	36.7'	12,300	48.2'	10,400	54.8'	8,200
76	39.7'	12,300	50.5'	10,100	56.8'	8,000
75	42.3'	12,300	53.1'	9,900	59.1'	7,800
73	47.6'	12,300	58.1'	9,300	63.6'	7,600
70	55.4'	10,700	65.0'	8,500	70.2'	7,200
68	59.4'	9,000	69.2'	7,300	74.1'	6,500
65	65.9'	6,900	75.1'	5,800	79.4'	5,200
63	69.9'	5,900	79.1'	4,900	83.3'	4,500
60	76.4'	4,500	85.0'	3,900	88.6'	3,500
58	80.4'	3,800	88.6'	3,300	92.2'	3,000
55	86.3'	2,900	94.2'	2,500	97.1'	2,300
53	89.9'	2,400	97.8'	2,100	100.4'	1,900
50	95.5'	1,700	102.7'	1,500	105.0'	1,400
48	99.1'	1,300	106.0'	1,100	107.9'	1,100

C	114.8' (35 m) Boom (telescoping mode I) + 58.1' (17.7 m) Jib					
	3.5° Tilt		25° Tilt		45° Tilt	
	R	W	R	W	R	W
80	35.1'	7,100	56.8'	6,200	68.9'	4,500
79	38.4'	7,100	59.4'	5,600	71.2'	4,200
78	41.7'	7,100	62.7'	5,600	73.8'	4,200
77	44.9'	7,100	65.6'	5,600	76.8'	4,200
76	48.2'	7,100	68.6'	5,500	79.1'	4,200
75	51.2'	7,100	71.2'	5,400	81.7'	4,100
73	57.7'	7,100	76.8'	5,000	86.3'	4,000
70	67.3'	7,100	84.6'	4,700	93.2'	3,800
68	72.2'	6,000	89.9'	4,500	97.8'	3,600
65	79.4'	4,700	96.5'	3,500	103.3'	3,000
63	84.3'	3,900	100.7'	2,900	107.3'	2,500
60	91.2'	2,900	107.3'	2,200	113.2'	1,900
58	96.1'	2,300	111.5'	1,800	116.8'	1,500
55	103.0'	1,600	117.5'	1,200	122.0'	1,000
53	107.3'	1,200				

C :Loaded boom angle (°)  
R :Load radius in feet  
W :Rated lifting capacity in pounds

## GR-750XL RATED LIFTING CAPACITIES (IN POUNDS)

COUNTERWEIGHT 12,500 lbs (5.7 t) ON OUTRIGGERS MIN EXTENDED 8' 10-5 / 16" (2.7 m) SPREAD 360° ROTATION																					
A B	36.1' (11 m)		49.2' (15 m)		62.3' (19 m)		75.5' (23 m)		88.6' (27 m)		101.7' (31 m)		114.8' (35 m)		128.0' (39 m)	141.1' (43 m)					
	C	C	C	C	C	C	C	C	C	C	C	C	C	C	C	C					
8'	72	128,500	77	90,000	79	70,500	78	44,100													
10'	68	79,000	74	77,300	76	53,200	76	44,100	79	44,100	79	44,100									
12'	64	55,700	72	54,200	76	53,200	76	44,100	79	44,100	79	44,100									
15'	58	37,100	68	36,000	73	35,200	73	40,700	77	36,900	77	41,300	79	38,000	79	37,500					
20'	47	21,800	61	21,100	69	20,400	68	25,200	73	21,900	73	25,700	76	22,800	76	26,100					
25'	32	14,000	54	13,300	63	12,900	63	17,300	69	14,200	69	17,800	72	15,100	72	18,100					
30'			46	8,600	58	8,100	58	12,300	64	9,600	64	12,900	69	10,400	69	13,200					
35'			35	5,400	51	4,900	51	9,000	59	6,300	59	9,600	65	7,200	65	9,900					
40'			21	3,100	45	2,600	45	6,600	55	4,000	55	7,200	61	4,900	61	7,600					
45'								37	4,800	50	2,200	50	5,400	58	3,100	57	5,700				
50'								28	3,400			44	3,900	53	1,700	53	4,300				
55'								11	2,300			38	2,800			49	3,200				
60'												31	1,900			44	2,200				
65'																38	1,500				
D		0		38		0		45		21		52		33		58	44	58	51	59	65
Telescoping conditions (%)																					
Telescoping mode	I, II	I	I	II	I	II	I	II	I	II	I	II	I	II	I	II					
2nd boom	0	50	100	0	100	0	100	0	100	0	100	0	100	0	50	100					
3rd boom	0	0	0	33	16	50	33	66	50	83	66	100	100	100	100	100					
4th boom	0	0	0	33	16	50	33	66	50	83	66	100	100	100	100	100					
Top boom	0	0	0	33	16	50	33	66	50	83	66	100	100	100	100	100					

COUNTERWEIGHT 12,500 lbs (5.7 t) LIFTING CAPACITIES AT ZERO DEGREE BOOM ANGLE ON OUTRIGGERS MIN EXTENDED 8' 10-5 / 16" (2.7 m) SPREAD 360° ROTATION																
A C	36.1' (11 m)		49.2' (15 m)		62.3' (19 m)		75.5' (23 m)		88.6' (27 m)		101.7' (31 m)		114.8' (35 m)		128.0' (39 m)	141.1' (43 m)
	B	B	B	B	B	B	B	B	B	B	B	B	B	B	B	B
0	28.9	9,900	42.0	2,000	55.4	2,200										
Telescoping mode	I, II	I	I	II	II	II	II	II	II	II	II	II	II	II	II	II

NOTE: The lifting capacity data stored in the LOAD MOMENT INDICATOR (AML-C) is based on the standard number of parts of line listed in the chart.  
Standard number of parts of line for each boom length should be according to the following table.

Boom length in feet (meters)	36.1' (11 m)	36.1' to 49.2' (11 m to 15 m)	49.2' to 62.3' (15 m to 19 m)		62.3' to 141.1' (19 m to 43 m)	Single top Jib
Telescoping mode	I, II	I	I	II	I, II	I, II
Number of parts of line	14	8	6	4	4	1

A : Boom length in feet  
B : Load radius in feet  
C : Loaded boom angle (°)  
D : Minimum boom angle (°) for indicated length (no load)

WITHOUT COUNTERWEIGHT ON OUTRIGGERS FULLY EXTENDED 23' 11-3 / 8" (7.3 m) SPREAD 360° ROTATION					
A B	36.1' (11 m)			62.3' (19 m)	
	C	C	C	C	C
8'	71			22,000	
10'	67			22,000	
12'	64			22,000	75
15'	58			22,000	73
20'	47			22,000	68
25'	32			22,000	62
30'				57	19,800
35'				51	17,600
40'				45	11,000
45'				37	8,800
50'				28	7,700
D				0	
Telescoping conditions (%)					
Telescoping mode	I	I	I	II	II
2nd boom	0				0
3rd boom	0				33
4th boom	0				33
Top boom	0				33

NOTE: The lifting capacity data stored in the LOAD MOMENT INDICATOR (AML-C) is based on the standard number of parts of line listed in the chart.  
Standard number of parts of line for each boom length should be according to the following table.

Boom length in feet (meters)	36.1' (11 m)	62.3' (19 m)
Telescoping mode	I, II	II
Number of parts of line		4

A : Boom length in feet  
B : Load radius in feet  
C : Loaded boom angle (°)  
D : Minimum boom angle (°) for indicated length (no load)

# WARNING AND OPERATING INSTRUCTIONS FOR LIFTING CAPACITIES

## GENERAL

1. RATED LIFTING CAPACITIES apply only to the machine as originally manufactured and normally equipped by TADANO LTD. Modifications to the machine or use of optional equipment other than that specified can result in a reduction of capacity.
2. Hydraulic cranes can be hazardous if improperly operated or maintained. Operation and maintenance of this machine must be in compliance with information in the **Operation and Maintenance Manual** supplied with the crane. If this manual is missing, order a replacement through the distributor.
3. The operator and other personnel associated with this machine shall fully acquaint themselves with the latest American National Standards Institute (ANSI) safety standards for cranes.
10. When making lifts at a load radius not shown, use the next longer radius to determine allowable capacity.
11. Load per line should not exceed 12,300 lbs. (5,600 kg) for main winch and auxiliary winch.
12. Check the actual number of parts of line with LOAD MOMENT INDICATOR (AML-C) before operation. Maximum lifting capacity is restricted by the number of parts of line of LOAD MOMENT INDICATOR (AML-C). Limited capacity is as determined from the formula, Single line pull for main winch 12,300 lbs. (5,600 kg) x number of parts of line.
13. The boom angle before loading should be greater to account for deflection. For rated lifting capacities, the loaded boom angle and the load radius is for reference only.
14. The 36.1' (11.0 m) boom length capacities are based on boom fully retracted. If not fully retracted [less than 49' (15.0 m) boom length], use the rated lifting capacities for the 49' (15.0 m) boom length.

## SET UP

1. Rated lifting capacities on the load chart are the maximum allowable crane capacities and are based on the machine standing level on firm supporting surface under ideal job conditions. Depending on the nature of the supporting surface, it may be necessary to have structural supports under the outrigger floats or tires to spread the loads to a larger bearing surface.
2. For outrigger operation, outriggers shall be properly extended with tires free of supporting surface before operating crane.

## OPERATION

1. Rated lifting capacities have been tested to and meet minimum requirements of SAE J1063-Cantilevered Boom Crane Structures Method of Test.
2. Rated lifting capacities do not exceed 85 % of the tipping load on outriggers fully extended as determined by SAE J765-Crane Stability Test Code.  
Rated lifting capacities for partially extended outriggers are determined from the formula, Rated Lifting Capacities = (Tipping Load - 0.1 x Tip Reaction) / 1.25.
3. Rated lifting capacities above thick lines in the chart are based on crane strength and those below, on its stability. They are based on actual load radius increased by boom deflection.
4. The weight of handling device such as hook blocks, slings, etc., must be considered as part of the load and must be deducted from the lifting capacities.
5. Rated lifting capacities are based on freely suspended loads and make no allowance for such factors as the effect of wind, sudden stopping of loads, supporting surface conditions, inflation of tires, operating speeds, side loads, etc. Side pull on the boom or jib is extremely dangerous. Such action can damage the boom, jib or slewing mechanism, and lead to overturning the crane.
6. Rated lifting capacities do not account for wind on lifted load or boom. We recommend against working under the condition that the load is out of control due to a strong wind. During boom lift, consider that the rated lifting capacity is reduced by 50 % when the wind speed is 20 mph (9 m/s) to 27 mph (12 m/s); reduced by 70 % when the wind speed is 27 mph (12 m/s) to 31 mph (14 m/s). If the wind speed is 31 mph (14 m/s) or over, stop operation. During jib lift, stop operation if the wind speed is 20 mph (9 m/s) or over.
7. Rated lifting capacities at load radius shall not be exceeded. Do not tip the crane to determine allowable loads.
8. Do not operate at boom lengths, radii, or boom angle, where no capacities are shown. Crane may overturn without any load on the hook.
9. When boom length is between values listed, refer to the rated lifting capacities of the next longer and next shorter booms for the same radius. The lesser of the two rated lifting capacities shall be used.
15. Extension or retraction of the boom with loads may be attempted within the limits of the RATED LIFTING CAPACITIES. The ability to telescope loads is limited by hydraulic pressure, boom angle, boom length, crane maintenance, etc.
16. For lifting capacity of single top, deduct the weight of the load handling equipment from the rated lifting capacity of the boom. For the lifting capacity of single top, the net capacity shall not exceed 12,300 lbs (5,600 kg) including main boom hook mass attached to the boom.
17. When the base jib or top jib or both jibs are removed, set the jib state switch to the REMOVED position.
18. When erecting and stowing jib, be sure to retain it by hand or by other means to prevent its free movement.
19. Use "ANTI-TWO BLOCK" disable switch when erecting and stowing jib and when stowing hook block. While the switch is pushed, the hoist does not stop, even when overwind condition occurs.
20. For boom length 141.1' (43.0 m) or less and 114.8' (35.0 m) or longer with jib, rated lifting capacities are determined by loaded boom angle only in the column headed "141.1' (43.0 m) boom + jib".  
For boom length 114.8' (35.0 m) or less with jib, rated lifting capacities are determined by loaded boom angle only in the column headed "114.8' (35.0 m) boom + jib". For angles not shown, use the next lower loaded boom angle to determine allowable capacity. (Telescoping MODE I)  
For boom length 141.1' (43.0 m) or less and 128.0' (39.0 m) or longer with jib, rated lifting capacities are determined by loaded boom angle only in the column headed "141.1' (43.0 m) boom + jib".  
For boom length 128.0' (39.0 m) or less with jib, rated lifting capacities are determined by loaded boom angle only in the column headed "128.0' (39.0 m) boom + jib". For angles not shown, use the next lower loaded boom angle to determine allowable capacity. (Telescoping MODE II)
21. When lifting a load by using jib (aux. winch) and boom (main winch) simultaneously, do the following:
  - Enter the operation status as jib operation, not as boom operation.
  - Before starting operation, make sure that mass of load is within rated lifting capacity for jib.
22. Before telescoping the boom, set the telescoping mode selector switch to MODE or MODE with the boom fully retracted. A change of the telescoping mode is not permissible when the boom has been partially or fully extended.
23. Crane operation is prohibited without full counterweight 12,600 lbs. (5.7 tons) installed. Outriggers shall be extended 23'11 3/8 (7.3 m) spread when installing or removing removable counterweight.

## DEFINITIONS

1. Load Radius: Horizontal distance from a projection of the axis of rotation to supporting surface before loading to the center of the vertical hoist line or tackle with load applied.
2. Loaded Boom Angle: The angle between the boom base section and the horizontal, after lifting the rated lifting capacity at the load radius.
3. Working Area: Area measured in a circular arc about the centerline of rotation.
4. Freely Suspended Load: Load hanging free with no direct external force applied except by the hoist line.
5. Side Load: Horizontal side force applied to the lifted load either on the ground or in the air.

## GR-750XL RATED LIFTING CAPACITIES (IN POUNDS)

ON-RUBBER STATIONARY														
	A	Over Front					360° Rotation							
		36.1'		62.3'		88.6'	36.1'		62.3'		88.6'			
		C	(11 m)	C	(19 m)	C	(27 m)	C	(11 m)	C	(19 m)	C	(27 m)	
10'	68	65,000				68	41,000							
12'	64	60,000				64	29,000							
15'	59	50,000	73	35,000		58	20,000	73	22,000					
20'	48	34,000	69	35,000		47	12,000	68	14,000					
25'	32	23,000	63	25,000	73	33	7,500	63	9,500	72	10,000			
30'			58	18,000	69			58	6,500	69	7,000			
35'			51	14,000	65			51	4,500	65	5,000			
40'			45	11,000	62			46	3,000	61	3,500			
45'			38	8,000	58					57	2,300			
50'			28	6,000	54									
55'			11	4,500	49									
60'					44									
65'					39									
70'					33									
<b>D</b>	0					0					37		54	

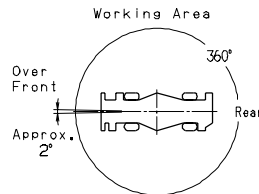
Telescoping conditions (%)									
Telescoping mode	I, II			II			II		
2nd boom	0			0			0		
3rd boom	0			33			66		
4th boom	0			33			66		
Top boom	0			33			66		

LIFTING CAPACITIES AT ZERO DEGREE BOOM ANGLE ON-RUBBER STATIONARY											
	A	Over Front					360° Rotation				
		36.1'		62.3'		88.6'	36.1'		62.3'		88.6'
		B	(11 m)	B	(19 m)	B	(27 m)	B	(11 m)		
0	28.9'	17,600	55.4'	4,400	81.7'	700	28.9'	5,100			

ON-RUBBER CREEP												
	A	Over Front										
		36.1'		62.3'		88.6'	36.1'		62.3'		88.6'	
		C	(11 m)	C	(19 m)	C	(27 m)					
10'	68	51,000										
12'	64	44,000										
15'	58	36,000	73	35,000								
20'	48	27,000	68	28,000								
25'	32	21,000	63	22,000	73	22,000						
30'			58	17,000	69	18,000						
35'			52	13,000	65	14,000						
40'			45	10,000	61	11,000						
45'			37	7,500	57	9,000						
50'			28	5,500	53	7,000						
55'			11	4,000	49	5,500						
60'					44	4,500						
65'					39	3,500						
70'					33	2,500						
<b>D</b>	0											

LIFTING CAPACITIES AT ZERO DEGREE BOOM ANGLE ON-RUBBER CREEP											
	A	Over Front									
		36.1'		62.3'		88.6'	36.1'		62.3'		88.6'
		B	(11 m)	B	(19 m)	B	(27 m)				
0	28.9'	17,200	55.4'	4,000	81.7'	700					

- A** : Boom length in feet
- B** : Load radius in feet
- C** : Loaded boom angle (°)
- D** : Minimum boom angle (°)  
for indicated length (no load)



NOTE: The lifting capacity data stored in the LOAD MOMENT INDICATOR (AML-C) is based on the standard number of parts of line listed in the chart. Standard number of parts of line for on-rubber operation should be according to the following table.

Boom length in feet (meters)	36.1' (11 m)	36.1' to 88.6' (11 m to 27 m)	Single top Jib
Number of parts of line	6	4	1



# WARNING AND OPERATING INSTRUCTIONS FOR ON-RUBBER LIFTING CAPACITIES

- Rated lifting capacities on-rubber are in pounds and do not exceed 75 % of tipping loads as determined by SAE J765-Crane Stability Test Code.
- Rated lifting capacities shown in the chart are based on condition that crane is set on firm level surfaces with suspension-lock applied. Those above thick lines are based on tire capacity and those below, on crane stability. They are based on actual load radius increased by tire deformation and boom deflection.
- If the suspension-lock cylinders contain air, the axle will not be locked completely and rated lifting capacities may not be obtainable. Bleed the cylinders according to the operation safety and maintenance manual.
- Rated lifting capacities are based on proper tire inflation, capacity and condition. Damaged tires are hazardous to safe operation of crane.
- Tires shall be inflated to correct air pressure.

Tires	Air Pressure
29.5-25 22PR	60 psi (420 kPa)
29.5-25 28PR	64 psi (450 kPa)

- Over front operation shall be performed within 2 degrees in front of chassis.
- On-rubber lifting with "jib" is not permitted. Maximum permissible boom length is 88.6 ft. (27.0 m).
- When making lift on-rubber stationary, set parking brake.
- For creep operation, boom must be centered over front of machine, slewing lock engaged, and load restrained from slewing. Travel slowly and keep the lifted load as close to the ground as possible, and especially avoid any abrupt steering, accelerating or braking.
- Do not operate the crane while carrying the load.
- Creep is motion for crane not to travel more than 200 ft. (60 m) in any 30 minute period and to travel at the speed of less than 1 mph (1.6 km/h).
- For creep operation, choose the drive mode and proper gear according to the road or working condition.

# WARNING AND OPERATING INSTRUCTIONS FOR USING THE LOAD MOMENT INDICATOR (AML-C)

- Set AML select keys in accordance with the actually operating crane conditions and don't fail to make sure, before crane operation, that the displays on front panel are correct.
- When operating crane on outriggers:
  - Set P.T.O. switch to "ON".
  - Press the outrigger state select key to register for the outrigger operation. If the display agrees with the actual state, press the set key to register. After the completion of the registration, the pop-up window closes.
  - Press the lift state select key to register the lift state to be used (single top / jib / boom).
  - Each time the lift state select key is pressed, the display changes. If the display agrees with the actual state, press the set key to register. After the completion of the registration, the pop-up window closes.
  - When erecting and stowing jib, select the status of jib set (Jib lift indicator symbol flickers).
- When operating crane on-rubber:
  - Set P.T.O. switch to "ON".
  - Press the outrigger state select key to register for the on-rubber operation. Each time the outrigger state select key is pressed, the display changes. Select the creep operation, the on-rubber state indicator symbol flickers.
  - Press the lift state select key to register the lift state.

However, pay attention to the following.

- For stationary operation.
  - The front capacities are attainable only when the over front position symbol comes on. When the boom is more than 2 degrees from centered over front of chassis, 360° capacities are in effect.
  - When a load is lifted in the front position and then swung to the side area, make sure the value of the LOAD MOMENT INDICATOR (AML-C) is below the 360° lifting capacity.

- For creep operation.
  - The creep capacities are attainable only when boom is in the straight forward position of chassis and the over front position symbol is on. If boom is not in the straight forward position of chassis, never lift load.
- This machine is equipped with an automatic slewing stop device. (For the details, see Operation and Maintenance Manual.) But, operate very carefully because the automatic slewing stop does not work in the following case.
  - During on-rubber operation.
  - When the "P.T.O." switch is set to "OVERRIDE" and the "OVERRIDE" key switch outside the cab is on.
- During crane operation, make sure that the displays on front panel are in accordance with actual operating conditions.
- The displayed values of LOAD MOMENT INDICATOR (AML-C) are based on freely suspended loads and make no allowance for such factors as the effect of wind, sudden stopping of loads, supporting surface conditions, inflation of tire, operating speed, side loads, etc. For safe operation, it is recommended when extending and lowering boom or slewing, lifting loads shall be appropriately reduced.
- LOAD MOMENT INDICATOR (AML-C) is intended as an aid to the operator. Under no condition should it be relied upon to replace use of capacity charts and operating instruction. Sole reliance upon LOAD MOMENT INDICATOR (AML-C) aids in place of good operating practice can cause an accident. The operator must exercise caution to assure safety.

## GR-750XL Axle weight distribution chart

	Pounds			Kilograms		
	GVW	Front	Rear	GVW	Front	Rear
Base machine	97,620	49,650	47,970	44,280	22,520	21,760
Remove:						
1. 6.2 ton (5.6 metric ton) hook block	-330	-470	140	-150	-214	64
2. 75 ton (68 metric ton) hook block	-1,300	-2,310	1,010	-590	-1,048	458
3. Top jib	-740	-805	65	-336	-365	29
4. Base jib	-1,910	-3,270	1,360	-867	-1,483	616
5. Auxiliary lifting sheave	-110	-300	190	-50	-137	87
6. Removable Counterweight (with Auxiliary Winch&wire)	-12,500	5,510	-18,010	-5,670	2,498	-8,168



