



STINGER 80-160

80T Lifting capacity
Boom truck crane

STINGER 80-160



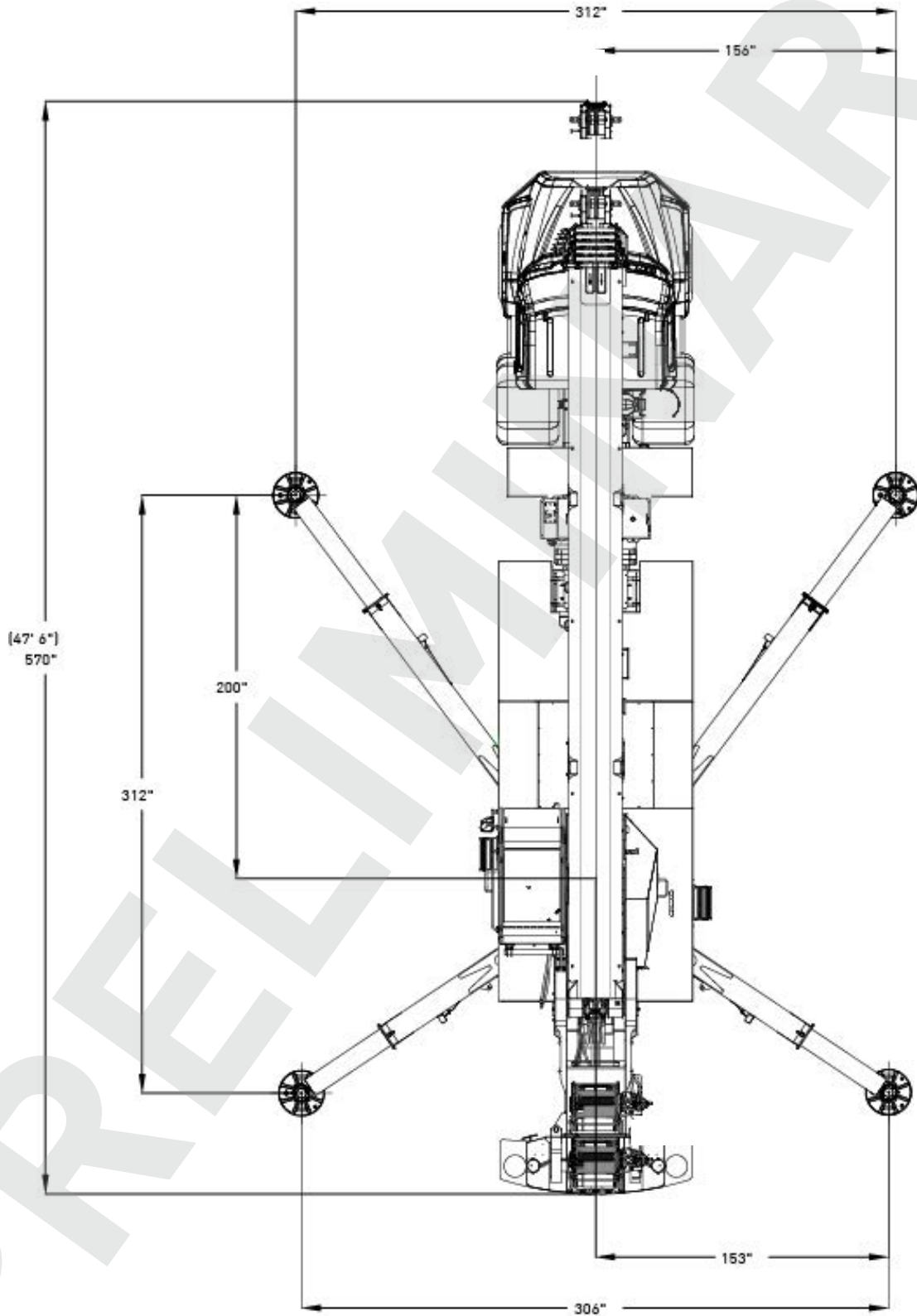
Features: STINGER 80-160

- 80 USt @ 10 ft
- 160 ft maximum boom length
- 170 ft maximum tip height
- 30-58 ft optional offsettable bi-fold swing away jib
- 228 ft maximum tip height with 58 ft jib
- Tilting operator cab (0 - 18 degrees)
- Electronic rated capacity indicator
- Quick reeve boom head

DIMENSIONS

STINGER 80-160

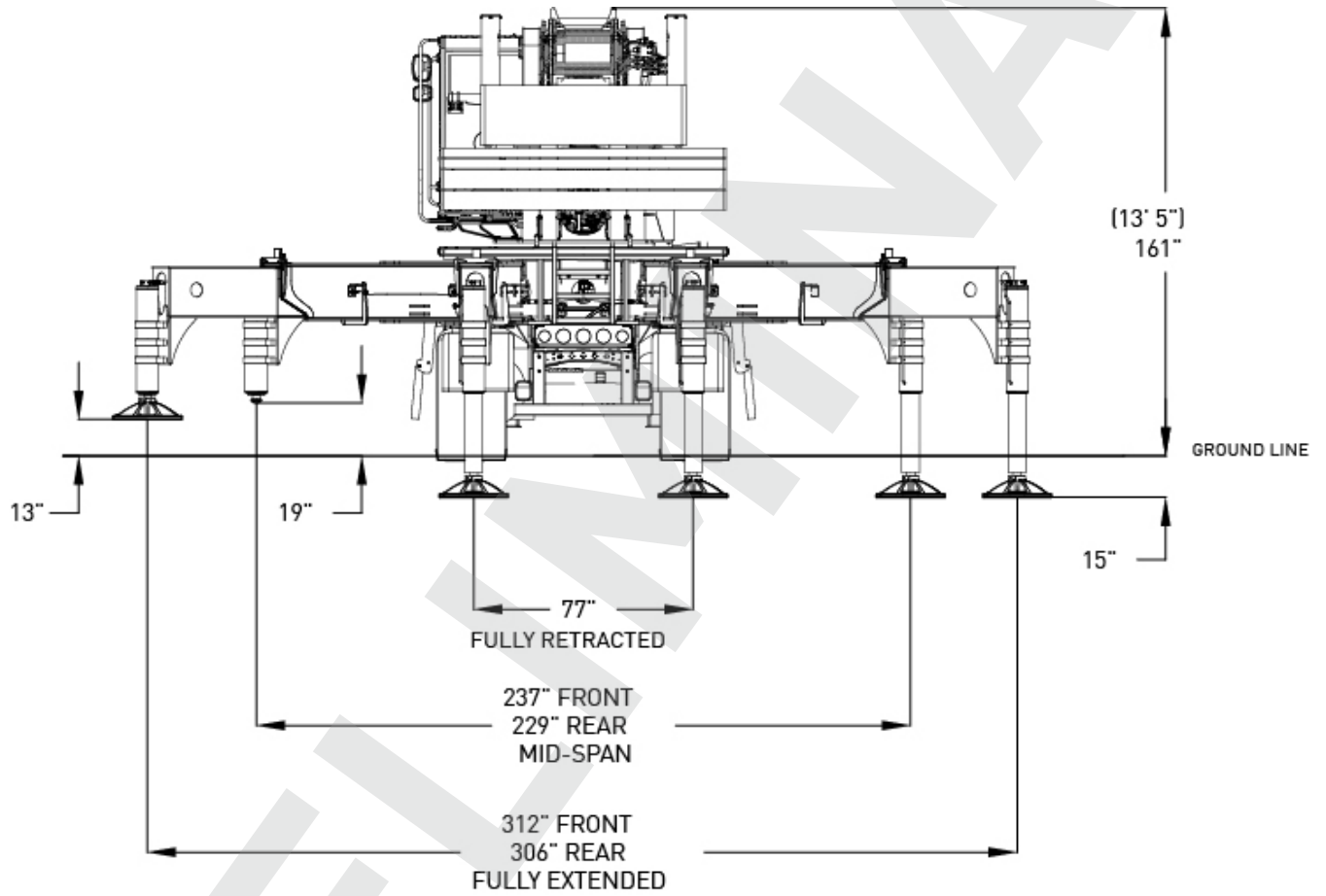
Crane Dimensions



DIMENSIONS

STINGER 80-160

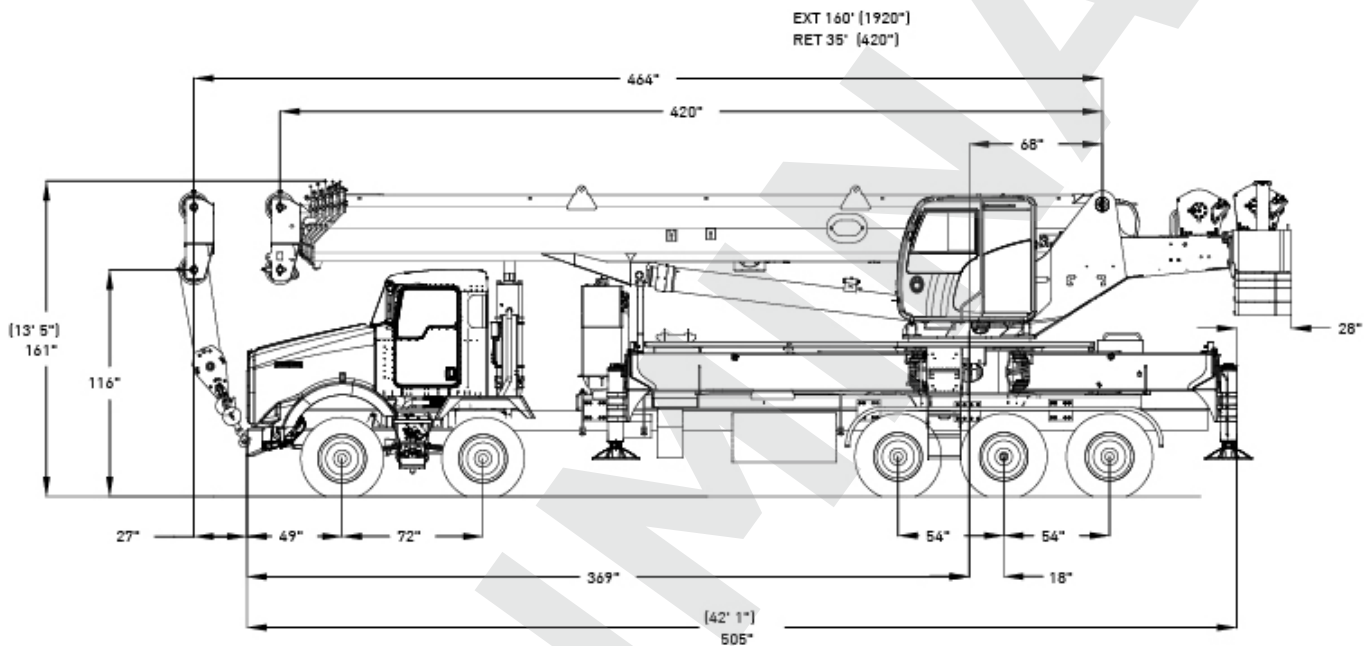
Crane Dimensions



DIMENSIONS

STINGER 80-160

Crane Dimensions

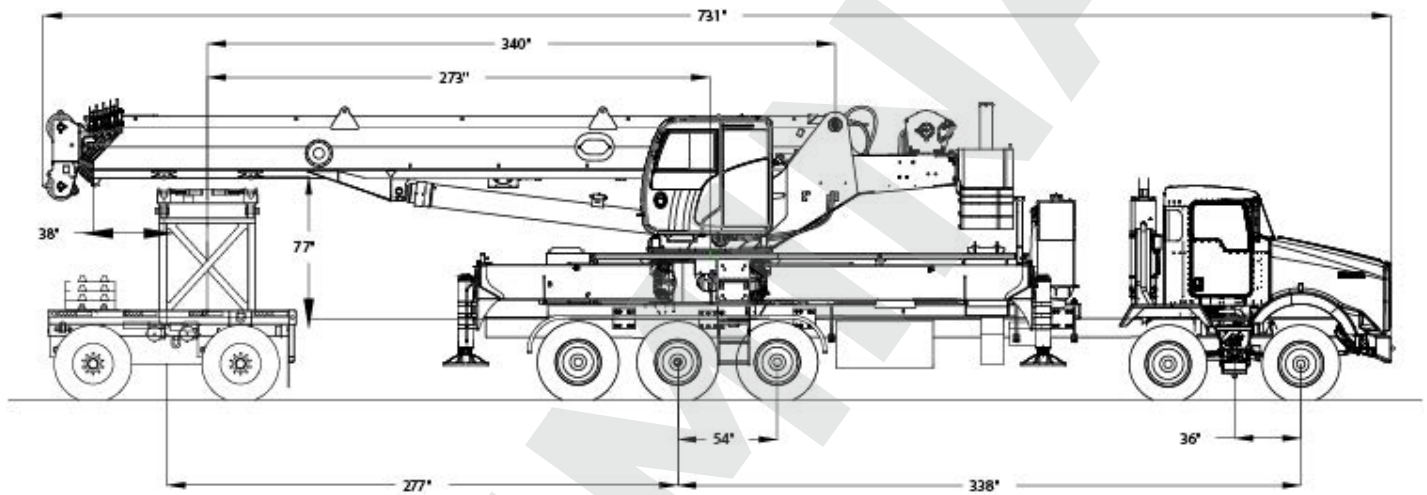


All Chassis Must be Pre-Approved by Factory

DIMENSIONS

STINGER 80-160

Crane Dimensions with Boom Dolly



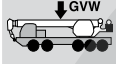
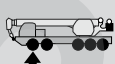
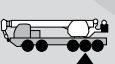
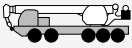





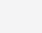
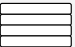
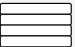
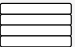
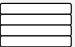
Estimated Axle Weight Distributions
Gross Wt. = 113,300

Configuration (Counterweights:)	Tandem Front Axles	Tridem Rear Axles	Dolly
12000 LBS ON DOLLY	25,600	50,000	37,700

SPECIFICATIONS

STINGER 80-160

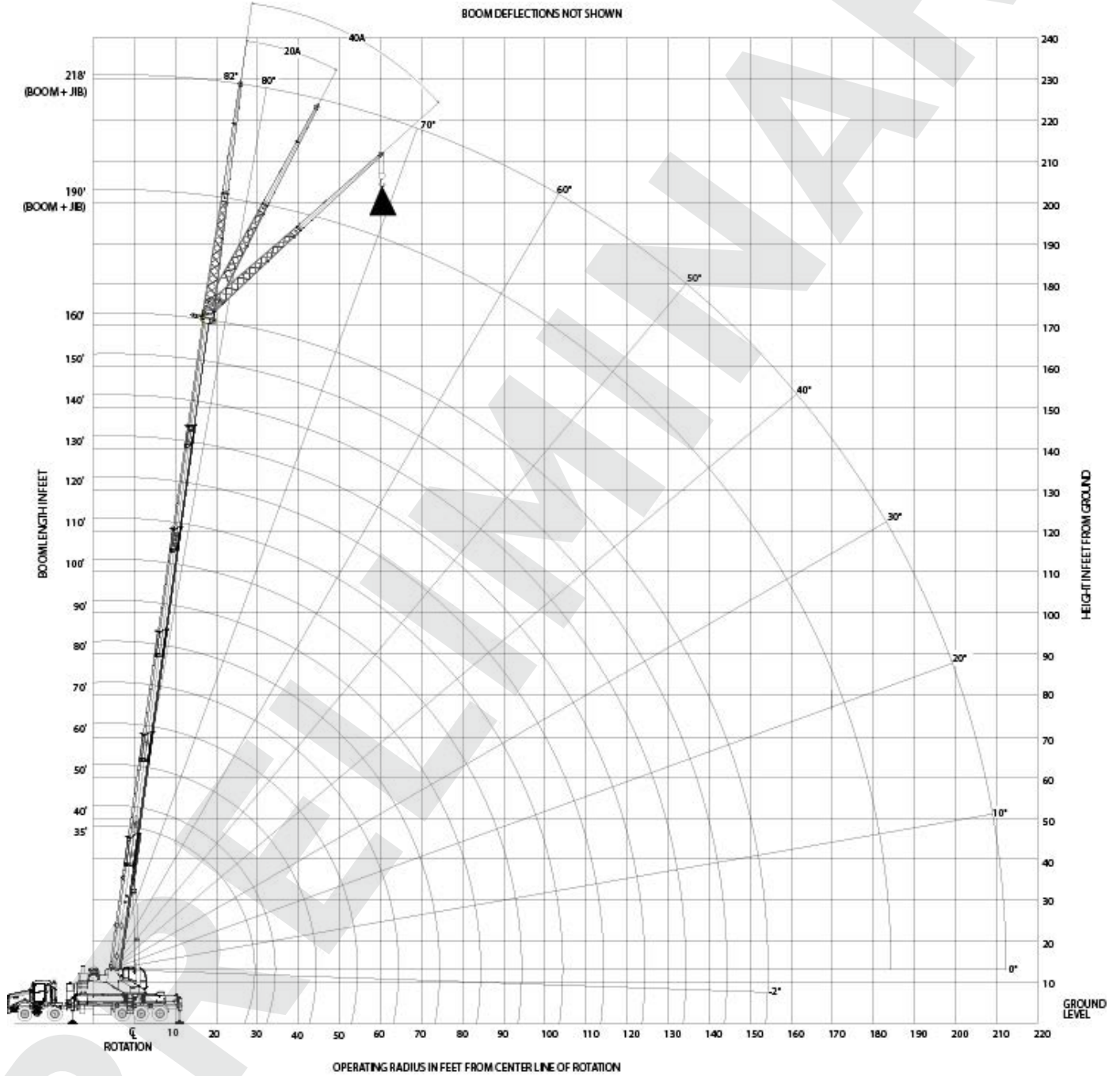
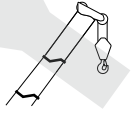
Approximate Crane Weights

				
Configuration:  1/4 tank fuel 200 lb operator seated in driver's cab 160 ft boom / no jib Base counterweight Aux winch		62,084	16,679	45,405
Options:  Full fuel tank		750	250	500
 30'-58' bi-fold jib		2,706	2,282	424
 80 ton 5 sheave block at bumper		1,608	2,246	-638
 60 ton 5 sheave block at bumper		1,204	1,798	-594
 50 ton 3 sheave block at bumper		1,036	1,447	-411
 12 ton overhaul-ball at bumper		420	578	-158
 2000 lb counterweight on superstructure		2,000	-717	2,717
 2000 lb on storage rack		2,000	1,277	723
 4000 lb counterweight on superstructure		4,000	-1,434	5,434
 4000 lb on storage rack		4,000	2,554	1,446
Bare chassis (EST)		27,040	16,740	10,300

RANGE DIAGRAM

Outriggers Fully Extended

STINGER 80-160



LOAD CHART

STINGER 80-160

Outriggers Fully Extended

 15,000 lbs

 (100%)

 360°

 35 to 160 ft

Standard ASME B30.5

ft	Boom Length														ft	
	35 ft	40 ft	50 ft	60 ft	70 ft	80 ft	90 ft	100 ft	110 ft	120 ft	130 ft	140 ft	150 ft	160 ft		
lbs	lbs	lbs	lbs	lbs	lbs	lbs	lbs	lbs	lbs	lbs	lbs	lbs	lbs	lbs	lbs	
10	160000															10
12	130650	126400	120050	80000	42950											12
15	113950	110000	103850	80000	42950	42800	42400	39500	35900							15
20	93350	90300	84850	80000	42950	42800	39950	35550	32500	29500	27100					20
25	76300	75650	71550	67800	42950	42800	36650	32700	29700	26900	24250	22550	20700			25
30		59700	57550	56050	42950	40650	34200	30300	27300	24400	22350	20800	19350	18150		30
35			41650	40300	42100	38350	32150	28250	25000	22600	20700	19300	17900	16750		35
40			37050	30400	32050	33200	30450	26550	23400	21100	19350	17800	16700	15750		40
45				27800	25150	26250	27050	24650	22000	19800	18100	16700	15650	15000		45
50				25400	21550	21150	21950	22500	20750	18700	17100	15700	14600	13200		50
55					20700	17950	18050	18650	18800	16950	15350	14300	12950	12950		55
60					18700	17100	15350	15550	16000	15100	13850	12950	12800	11500		60
65						16450	14600	13350	13500	13500	12950	12350	11500	10150		65
70						14350	14000	12350	11500	11800	12050	11150	10300	9150		70
75							12800	11850	10950	10100	10350	10150	9400	8200		75
80								11350	11350	10300	9300	8900	9050	8500	7450	80
85									10150	9550	8600	7750	7850	7750	6700	85
90									9050	8900	7950	7150	7150	7150	6050	90
95										8200	7450	6700	6700	6650	5550	95
100										7350	6900	6200	6200	6050	5100	100
105											6500	5850	5800	5300	4450	105
110											5950	5450	5450	4650	3800	110
115												5150	4900	4050	3200	115
120												4850	4350	3500	2650	120
125													3850	3000	2200	125
130													3400	2550	1750	130
135														2150	1350	135
140														1800		140

Notes to lifting capacity

Lifting capacities do not exceed 85% of tipping load. Weight of hook blocks and slings are part of the load, and are to be deducted from the capacity ratings. Consult operation manual for further details.




Note: Data published herein is intended as a guide only and shall not be construed to warrant applicability for lifting purposes. Crane operation is subject to the computer charts and operation manual both supplied with the crane.

LOAD CHART




STINGER 80-160

With Jib, Outriggers Fully Extended

 15,000 lbs
  (100%)
  360°
 Standard ASME B30.5

30 ft Offsettable Jib					
0°		20°		40°	
 ft	lbs	 ft	lbs	 ft	lbs
40	13050	50	8350	55	6450
45	11850	55	7800	60	6150
50	10950	60	7400	65	5900
55	10000	65	7000	70	5700
60	9200	70	6650	75	5450
65	8450	75	6250	80	5200
70	7700	80	6000	85	5050
75	7000	85	5750	90	4850
80	6350	90	5450	95	4700
85	5750	95	5000	100	4600
90	5300	100	4600	105	4300
95	4800	105	4200	110	4000
100	4400	110	3850	115	3650
105	4050	115	3500	120	3300
110	3700	120	3250	125	3000
115	3350	125	2950	130	2700
120	2950	130	2450		
125	2450	135	2000		
130	2000	140	1600		
135	1600	145	1200		
140	1250				

 15,000 lbs
  (100%)
  360°
 Standard ASME B30.5


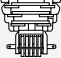





58 ft Offsettable Jib					
0°		20°		40°	
 ft	lbs	 ft	lbs	 ft	lbs
50	8800	65	4850	80	3300
55	7900	70	4600	85	3150
60	7350	75	4350	90	3050
65	6750	80	4100	95	2950
70	6200	85	3850	100	2800
75	5800	90	3700	105	2700
80	5450	95	3500	110	2600
85	5100	100	3350	115	2450
90	4800	105	3150	120	2400
95	4500	110	3050	125	2350
100	4150	115	2900	130	2250
105	3750	120	2750	135	2150
110	3400	125	2650	140	2050
115	3100	130	2500	145	1900
120	2650	135	2200	150	1500
125	2150	140	1750	155	1100
130	1750	145	1400		
135	1350	150	1000		

Notes to lifting capacity





Lifting capacities do not exceed 85% of tipping load. Weight of hook blocks and slings are part of the load, and are to be deducted from the capacity ratings. Consult operation manual for further details.

Note: Data published herein is intended as a guide only and shall not be construed to warrant applicability for lifting purposes. Crane operation is subject to the computer charts and operation manual both supplied with the crane.

Boom, Jib and Rotation

	Six-section full power telescopic boom with A and B modes		
	Boom length	Retracted	35 ft
		Extended	160 ft
	Boom maximum tip height		170 ft
	Boom elevation angle range (min. / max.)		-2° / 82°
	Boom extend / retract speed		113 / 101 Sec
	Boom up / down speed		60 / 50 Sec
	Boom head		quick reeving
	360° continuous rotation		
	Electronic rated capacity indicator		
		Optional	
	Bi-fold swing away jib can be offset to 0°, 20° or 40°		30 ft / 58 ft
	Maximum tip height with extended jib		228 ft
	5 sheave block, quick reeve		80 UST
	5 sheave block, quick reeve		60 UST
	3 sheave block, quick reeve		50 UST
	Top swivel ball with hook and latch		12 UST

Main and Aux Hoist, Rope and Hook

	Two speeds	Low Speed:	High Speed:
	First layer (no load speed)	204 ft/min	363 ft/min
	Fifth layer (no load speed)	293 ft/min	522 ft/min
	First layer	Low Speed:	High Speed:
	Fifth layer	17,500 lb	8,360 lb
		12,180 lb	5,820 lb
	Permissible line pull		15,900 lb
	Average breaking strength		79,500 lb
			600' of 3/4 in

TECHNICAL DESCRIPTION

STINGER 80-160

Operator Cab

	<p>Sliding door Sliding window on the right side Tilting, tinted glass skylight Removable front windshield Six-way adjustable heated seat with armrest dual-axis electro-proportional joysticks Joystick control for hoist(s), swing and boom elevation Foot pedals for swing brake and engine rpm Hand control for engine rpm Hydraulic cab tilt (0-18 degrees)</p>
	<p>Optional features for upper cab Hydraulically powered air-conditioning and flameless heater Work lights</p>
	<p>Electronic rated capacity indicator with color display</p>
	<p>Engine display provides operator cab readout of: Diesel fuel and DEF levels, engine status lamps, engine RPM, crane hours-of-operation, coolant temperature, oil pressure and throttle diagnostics</p>

Boom Rotation

	<p>Glide swing with foot pedal actuated multi-disc brake and air actuated 360° house lock</p>
	<p>Hydraulic driven double planetary reduction gear drive 2.2 rev/min</p>

Counterweight

	<p>Main counterweight, non removable, bolted to upper crane structure 3,000 lbs Removable counterweight package 2 x 2,000 lbs / 2 x 4,000 lbs</p>
--	--

Outriggers

	<p>X-pattern Swing out and down</p>	<p>Outer edge of pad</p>
	<p>Fully Extended Front: Rear:</p>	<p>28' 27' 6"</p>
	<p>Mid Span Front: Rear:</p>	<p>21' - 9" 21' - 1"</p>
	<p>Fully Retracted Front and rear:</p>	<p>8' - 5"</p>

LOCATIONS



24/7 CALL CENTER
833-281-7911

PARTS QUESTIONS
833-PARTSLK (833-727-8755)
PARTSSUPPORT@LOADKINGMFG.COM

PARTS ORDERS
STORE.LOADKINGMFG.COM

WARRANTY
CRANEWARRANTY@LOADKINGMFG.COM

All our new cranes are backed by an industry-leading 3-year basic and 5-year structural warranty

L LOAD KING AUTHORIZED SERVICE CENTERS

1 CUSTOM TRUCK ONE SOURCE LOCATIONS

www.loadkingmfg.com

