

Telescopic Crawler Crane Grue télescopique sur chenilles

LTR 1220

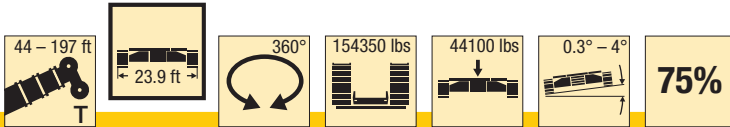
Load charts - Ground slope
Tableaux des charges - Inclinaison du terrain



LIEBHERR

Lifting capacities Forces de levage

T

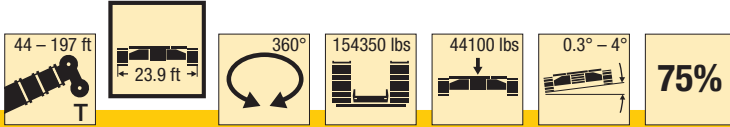


ft	44 ft					58 ft					72 ft					86 ft					ft	
	0.3°	0.7°	1.5°	2.5°	4°	0.3°	0.7°	1.5°	2.5°	4°	0.3°	0.7°	1.5°	2.5°	4°	0.3°	0.7°	1.5°	2.5°	4°		
10	295.4	295.4	295.4	261.7		295.4	295	275.7			295.4											10
11	295.4	295.4	285.5	246	138.4	295.4	287.7	259.3			295.4	274										11
12	294.1	287.2	268.5	232.8	138.2	295.2	270	243.6	209.8		293.9	258.1				240.9						12
13	290.2	270.8	252.4	221.1	138	289.5	253.1	232	202.2		288.3	241.8	218.1			261.8						13
14	277.9	254.4	239.1	212.2	138	278.2	239.2	222.5	195.1		276.9	229.7	209.8			263.7						14
15	266.7	240.9	228.7	204.7	138	266.9	228.3	214.3	188.6		263.5	219.2	202.2			259	210.9					15
16	256.1	229.7	219.8	197.7	138	255.8	219.3	206.8	182.5	97.6	249.8	210.4	195.2	169.4		244.8	202.5					16
17	246.2	220.6	212	191.1	138	245.8	211.5	199.9	176.9	97.8	240.2	202.7	188.6	164.2		235.6	195.1	178.7				17
18	237	212.5	204.7	184.9	138	237.4	203.8	193.2	171.4	97.9	231.7	195.5	182.5	159.3		226.3	188.1	172.9				18
19	228.2	205.1	197.8	179.1	138	229.4	197	187.1	166.4	97.9	223.2	188.8	176.9	154.8		217.7	181.5	167.4	141.8			19
20	219.7	198	191.3	173.6	138	221.2	190.2	181.1	161.5	97.9	215.2	182.6	171.2	150.3		210	175.6	162.5	142.9			20
22	204.3	184.7	179.1	163	138	206	178.4	170.5	152.7	97.9	201.3	171.6	161.7	142.6	64	195.8	166.4	154.7	135.4			22
24	190.7	172.5	167.5	152.3	135.1	192.5	167.9	160.9	144.7	97.8	188.7	161.5	152.8	135.4	63.8	183.5	157.6	147.1	128.8			24
26	178.6	160.8	156.1	141.8	125.6	180.4	158.3	152.2	137.4	97.8	177.6	152.4	144.8	128.8	63.8	172.6	148.9	139.9	122.8	40.3		26
28	167.7	149.3	144.8	131.4	115.8	169.5	149.6	144.3	130.6	97.8	167.6	144.3	137.5	122.8	63.8	163.1	141.4	133.2	117.4	40.4		28
30	157	137.7	133.2	120.5	105.4	159.2	141.5	136.8	124.2	97.8	158.7	137	130.9	117.7	63.8	154.4	134.4	127	112.4	40.9		30
32	143.3	125.1	120.5	108.2	93.5	150.1	134.1	129.9	117.9	97.8	150.5	130.3	124.9	113	63.8	146.4	127.9	121.3	107.7	41.6		32
34	126.7	109.8	104.9	92.9	78.1	141.5	127	123	111.6	96.8	142	124.2	119.3	108.5	63.8	139.1	122	116	103.4	42.3		34
36	99.3	84.2	78.1	66.4	50.9	133.3	120.1	116.3	106.3	93	133.9	118.5	114.1	104.5	63.8	132.7	116.7	111.3	99.4	42.2		36
38						125.9	113.3	109.7	100.3	87.3	126.5	113.1	109.1	100.4	63.8	125.8	111.7	106.8	95.7	42		38
40						118.8	106.6	103.1	94.1	81.5	119.5	108.1	104.5	96.2	63.8	118.9	107.1	102.6	92.1	41.8		40
45						101.7	89.5	85.8	76.6	65.4	104.2	96.4	93.2	85.9	63.8	103.5	96.8	93.1	84.1	41.7		45
50						68.8	57.8	53.1	44.2	32.4	90.8	87	84.1	76	62.8	93.3	87.8	84.8	76.7	41.7		50
55											82.2	75.8	72.9	65.3	54.8	82.3	79.5	76.7	69.5	41.7		55
60											72.1	62.3	59.1	51.9	43.3	73.4	71.4	69.1	62.4	41.7		60
65																65.9	64	61.5	55.2	41.7		65
70																59.7	55.5	53	46.9	37.5		70
75																52	44.4	41.6	37.2	29		75

t_242_00100_00_001 / 00200_00_001 / 00300_00_001 / 00400_00_001 / 00500_00_001

Lifting capacities Forces de levage

T

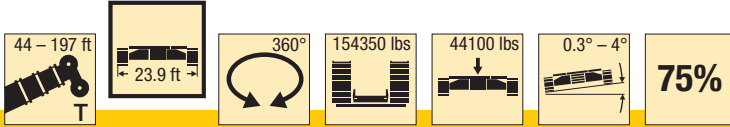


ft	100 ft					114 ft					128 ft					142 ft					ft		
	0.3°	0.7°	1.5°	2.5°	4°	0.3°	0.7°	1.5°	2.5°	4°	0.3°	0.7°	1.5°	2.5°	4°	0.3°	0.7°	1.5°	2.5°	4°			
16	216.9																					16	
17	216.5																						17
18	215	181.9																					18
19	212.1	177.9				176																	19
20	205.8	172.2				175.4																	20
22	191.7	161.5	148.2			174	155.8				117.7												22
24	179.3	152	140.3	121.2		171.7	147.3				124.8												24
26	168.4	143.6	133.2	115.4		167.1	139.1	127.4			120.8	112				99.5							26
28	160.6	136.1	126.9	110.4		158.2	131.7	121.2	94.3		116.4	107.9				98.7							28
30	153	129.4	120.9	105.7	27.3	149.6	125.1	115.5	94.2		111.9	103.9	94.4			96.2	89.4						30
32	145.4	123.4	115.8	101.5	28.7	141.8	119	110.6	94.2		107.6	100.1	91.3	66.1		93.4	87.1						32
34	138.1	117.6	110.7	97.4	28.8	134.8	113.6	105.7	91.9		103.4	96.3	88.3	66.1		90.4	84.8	78					34
36	131.8	112.5	106.2	93.8	28.8	128.5	108.6	101.5	88.6	16.1	99.2	92.7	85.3	66.1		87.4	82.5	76	48.4				36
38	125.9	107.7	101.9	90.3	28.8	122.8	104.1	97.5	85.3	16.2	95.1	89.1	82.4	66.1		84.9	80.2	73.9	48.4				38
40	120.4	103.3	98	87	28.9	117.3	99.7	93.6	82.2	16.2	91.2	85.8	79.5	66.1	8.5	82.6	77.9	71.9	48.4				40
45	105.5	93.6	89.2	79.7	29	104.2	90.3	85.3	75.4	16.1	82.7	78.2	72.9	65.1	9.3	76.8	72.2	66.9	48.3	3.5			45
50	92.3	85.2	81.7	73.4	29.4	90.8	82.2	78	69.4	16	75.1	71.4	66.9	62.3	10.1	70.9	67	62.4	48.3	3.7			50
55	81.3	77.8	74	67.6	30.4	80	75.1	71.1	64.2	16.3	68.7	65.6	62.2	58.8	10.2	65.5	62.1	58.2	48.3	3.9			55
60	72.4	69.6	66.6	62.1	31.3	71	67.5	63.8	59.5	16.5	63.4	61.2	58.9	56	10.1	60.6	57.7	54.4	48.1	4			60
65	64.9	62.7	60.3	56.8	32.5	63.5	60.7	57.7	54.3	16.9	59.7	57.8	55.8	53.3	10.1	56.1	53.7	50.8	46.8	4.3			65
70	58.6	56.8	55	51.6	34.5	57.2	54.9	52.4	49.6	17.4	56.6	54.9	52.8	49.9	10.1	52.2	50	47.5	44.3	4.6			70
75	53.2	51.8	50.4	46.3	36.9	51.7	49.8	47.8	46.1	18.3	53.5	51.2	48.7	45.8	10.4	48.5	46.6	44.4	41.8	5			75
80	48.5	47.4	45.7	41	34.3	47.2	46.4	45.4	44.2	19.7	48.8	46.8	44.7	42.4	10.7	45.3	43.6	41.7	39.4	5.5			80
85	44.4	41	40	35.9	27.6	45	44.4	43.5	41.2	21.8	44.6	43	41.2	39.2	11.2	42.2	40.7	38.9	36.5	5.8			85
90	39.4	33.4	30.8	26.1	19.4	42.4	41.4	40.4	36.9	23.9	40.9	39.6	38.1	36.4	11.9	39.2	37.6	35.8	33.9	6			90
95						39.2	38.3	36.5	32.1	25.9	37.6	36.5	35.3	33.9	13.2	36	34.9	33.7	32.3	6.3			95
100						36.3	32.5	30.4	26.6	21.8	34.7	33.8	32.8	31.4	14.7	33.9	32.9	31.7	30.7	6.7			100
105						28.2	24.5	22.1	17.9	12.2	32.1	31.4	30.6	27.9	15.9	31.8	31.2	30.5	29.4	7.3			105
110											29.7	29.1	27.4	25.3	17.5	30.4	29.6	28.6	27.6	8			110
115											27.5	25.6	23.7	20.2	15.4	28.3	27.6	26.8	25.3	9.1			115
120											20.5	16.8	14.5	10.8	6.1	26.3	25.7	25.1	22.2	10.7			120
125																24.5	23.4	21.8	19.6	13			125
130																22.4	19.7	17.9	14.6	10.4			130
135																12.6	9.4	7.5	4.7				135

t_242_00100_00_001 / 00200_00_001 / 00300_00_001 / 00400_00_001 / 00500_00_001

Lifting capacities Forces de levage

T

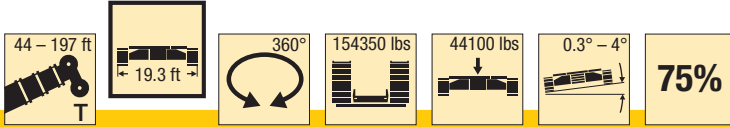


ft	156 ft					171 ft					185 ft				197 ft				ft	
	0.3°	0.7°	1.5°	2.5°	4°	0.3°	0.7°	1.5°	2.5°	4°	0.3°	0.7°	1.5°	2.5°	0.3°	0.7°	1.5°	2.5°		
30	81																			30
32	79.6																			32
34	77.9	72.7				64.6														34
36	75.9	70.9				63.8														36
38	73.9	69.2	61.5			62.5	58.5													38
40	71.9	67.4	60.9	34.9		61.2	57.3				52.1									40
45	67.1	63.2	58.4	34.9		57.7	54.2	47.1	25.6		49.8	46.6	35.3		41.8	38.9				45
50	62.8	59.3	55	34.9		54.3	51.2	46.5	25.6		47.1	44.3	35.2	17.4	40	37.4	27.7			50
55	58.8	55.7	51.7	34.9		51.1	48.3	45.1	25.6		44.6	42	35	17.4	38	35.7	27.6	12.7		55
60	54.9	52.1	48.7	34.9		48.2	45.8	42.9	25.6		42.2	39.9	34.7	17.4	36.1	34	27.5	12.7		60
65	51.3	48.9	45.8	34.9		45.6	43.5	40.8	25.6		39.9	37.9	34.2	17.4	34.3	32.4	27.4	12.7		65
70	48	45.9	43.2	34.9		43.1	41.2	38.9	25.6		37.9	36.1	33.1	17.4	32.6	30.9	27.4	12.7		70
75	45.1	43.2	40.8	34.8		40.9	39.2	37	25.6		36	34.3	31.8	17.4	31	29.4	26.7	12.7		75
80	42.4	40.6	38.9	34.6		38.8	37.2	35.3	25.6		34.2	32.6	30.5	17.4	29.5	28	25.9	12.7		80
85	39.9	38.6	37	34.1		36.9	35.4	33.6	25.6		32.5	31.1	29.2	17.4	28	26.7	25	12.7		85
90	37.9	36.6	35.1	33.1		35.1	33.7	32	25.6		30.9	29.6	28	17.4	26.7	25.5	24	12.7		90
95	35.9	34.6	33.1	31.2		33.3	32	30.5	25.6		29.5	28.3	26.9	17.4	25.4	24.4	23	12.7		95
100	33.8	32.4	30.8	29		31.6	30.4	29	25.6		28.1	27	25.7	17.4	24.3	23.3	22.1	12.7		100
105	31.3	30	28.6	27		29.9	28.8	27.6	25.6		26.8	25.9	24.7	17.4	23.2	22.3	21.2	12.7		105
110	28.9	27.8	26.6	25.2		28.3	27.3	26.2	24.8		25.7	24.8	23.7	17.4	22.2	21.3	20.3	12.7		110
115	26.7	25.9	25.2	24.3	2.6	26.7	25.8	24.6	23.1		24.5	23.7	22.7	17.4	21.2	20.4	19.5	12.7		115
120	25.4	24.7	24	23	3.5	25	24	22.9	21.6		23.5	22.8	21.8	17.4	20.3	19.6	18.7	12.7		120
125	23.8	23.2	22.7	22.1	4.2	23.2	22.3	21.3	20.2		22.5	21.7	20.6	17.4	19.4	18.8	18	12.7		125
130	22.7	22.3	21.7	20.2	5	21.5	20.7	19.9	18.9		21.1	20.2	19.1	17	18.6	18	17.3	12.7		130
135	21.4	20.9	20.3	17.5	6.1	19.9	19.3	18.8	18		19.6	18.7	17.8	15.6	17.8	17.3	16.6	12.7		135
140	19.9	18.5	17	14.4	8.2	18.9	18.5	18.1	16.7		18.1	17.4	16.6	14.2	17.1	16.6	16	12.7		140
145	17.1	14.3	12.5	9.7	6.2	18	17.6	17.1	15.3		16.8	16.1	15.5	12.8	16.5	15.9	15.3	11.9		145
150						16.8	16.5	15.6	13.1	2.6	15.5	15	14.4	11.5	15.7	15	14.3	10.7		150
155						15.7	14	12.5	10	4.5	14.4	13.9	13.4	10.4	14.6	14	13.3	9.5		155
160						12.2	9.6	8.2	6	3	13.3	13	12.6	9.3	13.5	13	12.4	8.4		160
165											12.3	12	11.2	8.3	12.5	12	11.5	7.3		165
170											11.4	9.6	8.3	6.4	11.5	11.1	10.8	6.4		170
175											7.7	5.8	4.6	2.6	10.6	10.3	9.9	5.4		175
180															9.8	9	7.9	4.6		180
185															8.1	6.3	5.1	3.4		185

t_242_00100_00_001 / 00200_00_001 / 00300_00_001 / 00400_00_001 / 00500_00_001

Lifting capacities Forces de levage

T

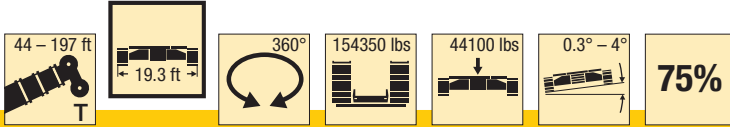


ft	44 ft					58 ft					72 ft					86 ft					ft	
	0.3°	0.7°	1.5°	2.5°	4°	0.3°	0.7°	1.5°	2.5°	4°	0.3°	0.7°	1.5°	2.5°	4°	0.3°	0.7°	1.5°	2.5°	4°		
10	295.4	295.4	295.4			295.4	295				295.4											10
11	295.4	295.4	285.5	246		295.4	287.7	259.3			295.4	274										11
12	294.1	287.2	268.5	232.8		295.2	270	243.6			293.9	258.1				240.9						12
13	290.2	270.8	252.4	221.1		289.5	253.1	232	199.8		288.3	241.8	218.1			261.8						13
14	277.9	254.4	239.1	212.2		278.2	239.2	222.5	193.8		276.9	229.7	209.8			263.7						14
15	266.7	240.9	228.7	204.7	138.7	266.9	228.3	214.3	188.6		263.5	219.2	202.2			259	210.9					15
16	256.1	229.7	219.8	197.7	139.1	255.8	219.3	206.8	182.5	97.6	249.8	210.4	195.2	167.4		244.8	202.5					16
17	246.2	220.6	212	191.1	139.5	245.8	211.5	199.9	176.9	97.8	240.2	202.7	188.6	164.2		235.6	195.1	178.7				17
18	237	212.5	204.7	184.9	139.9	237.4	203.8	193.2	171.4	97.9	231.7	195.5	182.5	159.3		226.3	188.1	172.9				18
19	228.2	205.1	197.8	179.1	140.4	229.4	197	187.1	166.4	97.9	223.2	188.8	176.9	154.8		217.7	181.5	167.4	141.8			19
20	219.7	198	191.3	173.6	141.2	221.2	190.2	181.1	161.5	97.9	215.2	182.6	171.2	150.3		210	175.6	162.5	142.9			20
22	204.3	184.7	179.1	163	142	206	178.4	170.5	152.7	97.9	201.3	171.6	161.7	142.6	64	195.8	166.4	154.7	135.4			22
24	190.7	172.5	167.5	152.3	135.1	192.5	167.9	160.9	144.7	97.8	188.7	161.5	152.8	135.4	63.8	183.5	157.6	147.1	128.8			24
26	178.6	160.8	156.1	141.8	125.6	180.4	158.3	152.2	137.4	97.8	177.6	152.4	144.8	128.8	63.8	172.6	148.9	139.9	122.8	40.3		26
28	167.7	149.3	144.8	131.4	115.8	169.5	149.6	144.3	130.6	97.8	167.6	144.3	137.5	122.8	63.8	162.5	141.4	133.2	117.4	40.4		28
30	156.8	137.7	133.2	120.5	105.4	159.1	141.5	136.8	124.2	97.8	158.7	137	130.9	117.7	63.8	151.4	134.4	127	112.4	40.9		30
32	142.5	125.1	120.5	108.2	93.5	145.4	134.1	129.9	117.9	97.8	146.1	130.3	124.9	113	63.8	140.2	127.9	121.3	107.7	41.6		32
34	126.7	109.8	104.9	92.9	78.1	132.6	127	123	111.6	96.8	133.6	124.2	119.3	108.5	63.8	130.4	122	116	103.4	42.3		34
36	99.3	84.2	78.1	66.4	50.9	121.8	118.2	114.2	106.3	93	122.7	117.5	112.6	104.5	63.8	123.7	116.7	111.3	99.4	42.2		36
38						112.4	109.4	106.1	100.3	87.3	113.3	109.2	105.3	100.4	63.8	116	110.3	105.2	95.7	42		38
40						105.5	102.9	100	94.1	81.5	107	103.5	99.7	95.2	63.8	107.6	103.3	98.6	91.8	41.8		40
45						88.9	87.2	85.2	76.6	65.4	90.6	88.1	85.3	81.9	63.8	90.9	87.7	84.2	80.1	41.7		45
50						68.8	57.8	53.1	44.2	32.4	78	76.1	74	71.5	62.8	78.2	75.8	73.1	70	41.7		50
55											68.1	66.7	65.2	63.3	54.8	68.2	66.4	64.3	61.8	41.7		55
60											60.2	59.2	58.1	51.9	43.3	60.3	58.8	57.2	55.2	41.7		60
65																53.7	52.6	51.3	49.7	41.7		65
70																48.3	47.4	46.4	45.2	37.5		70
75																43.7	43	41.6	37.2	29		75

t_242_00110_00_001 / 00210_00_001 / 00310_00_001 / 00410_00_001 / 00510_00_001

Lifting capacities Forces de levage

T

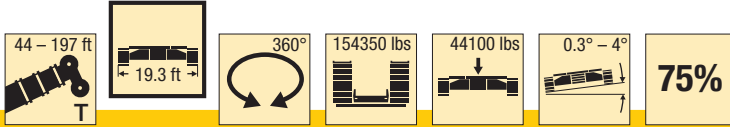


ft	100 ft					114 ft					128 ft					142 ft					ft		
	0.3°	0.7°	1.5°	2.5°	4°	0.3°	0.7°	1.5°	2.5°	4°	0.3°	0.7°	1.5°	2.5°	4°	0.3°	0.7°	1.5°	2.5°	4°			
16	216.9																					16	
17	216.5																						17
18	213.6	181.9																					18
19	207.7	177.9				176																	19
20	200.8	172.2				175.4																	20
22	187	161.5	148.2			169.7	155.8				117.7												22
24	175.5	152	140.3	121.2		160.4	147.3				124.8												24
26	168.2	143.6	133.2	115.4		151.3	139.1	127.4			120.8	112				99.5							26
28	158.7	136.1	126.9	110.4		143	131.7	121.2	94.3		116.4	107.9				98.7							28
30	147	129.4	120.9	105.7	27.3	135.6	125.1	115.5	94.2		111.9	103.9	94.4			96.2	89.4						30
32	137	123.4	115.8	101.5	28.7	128.8	119	110.6	94.2		107.6	100.1	91.3	66.1		93.4	87.1						32
34	127.6	117.6	110.7	97.4	28.8	120.8	113.5	105.7	91.9		103.4	96.3	88.3	66.1		90.4	84.8	78					34
36	119.8	112.5	106.2	93.8	28.8	113.3	107.6	101.2	88.6	16.1	99.2	92.7	85.3	66.1		87.4	82.5	76	48.4				36
38	112.5	107.2	101.4	90.3	28.8	106.7	101.5	95.9	85.3	16.2	95.1	89.1	82.4	66.1		84.9	80.2	73.9	48.4				38
40	106	101.3	96	87	28.9	100.5	95.8	90.8	82.2	16.2	91.2	85.8	79.5	66.1	8.5	82.6	77.9	71.9	48.4				40
45	90.1	86.3	82.3	77.6	29	87.6	83.8	79.5	74.3	16.1	82.6	78.2	72.9	65.1	9.3	76.8	72.2	66.9	48.3	3.5			45
50	77.4	74.4	71.3	67.7	29.4	76	72.7	69.1	65	16	73.1	69.9	66.3	62	10.1	70.9	67	62.4	48.3	3.7			50
55	67.3	65.1	62.6	59.7	30.4	66.2	63.5	60.7	57.4	16.3	66.8	64.1	61.2	57.7	10.2	64.9	61.9	58.1	48.3	3.9			55
60	59.4	57.6	55.6	53.2	31.3	59.3	57.7	55.6	53.2	16.5	59.9	57.5	54.9	51.8	10.1	58.1	55.6	52.9	47.7	4			60
65	52.8	51.3	49.7	47.8	32.5	54.6	52.8	50.9	48.6	16.9	53.3	51.3	49.1	46.6	10.1	51.9	49.7	47.3	44.5	4.3			65
70	47.9	47	45.9	44.7	34.5	49.1	47.6	46	44.1	17.4	47.8	46.1	44.3	42.1	10.1	47.1	45.3	43.2	40.7	4.6			70
75	45.1	44.2	43.1	41.8	36.6	44.3	43.1	41.8	40.2	18.3	43	41.6	40.1	38.3	10.4	42.9	41.5	39.8	37.9	5			75
80	41.2	40.4	39.5	38.4	34.3	40.3	39.3	38.2	36.8	19.7	39.1	37.9	36.5	34.9	10.7	39.8	38.4	36.9	35.1	5.5			80
85	37.8	37.1	36.4	35.3	27.6	36.8	36	35	33.9	21.8	35.9	34.9	33.9	32.6	11.2	36.3	35.1	33.8	32.2	5.8			85
90	34.8	33.3	30.8	26.1	19.4	33.8	33.1	32.3	31.3	23.9	33.9	33.1	32.3	31.2	11.9	33.2	32.2	31	29.7	6			90
95						31.1	30.5	29.8	29	25.9	31.7	31	30.1	29.1	13.2	30.4	29.6	28.6	27.4	6.3			95
100						28.8	28.3	27.7	26.6	21.8	29.3	28.7	28	27.1	14.7	28.2	27.5	26.6	25.5	6.7			100
105						26.7	24.5	22.1	17.9	12.2	27.2	26.6	26	25.2	15.9	26.2	25.5	24.8	23.9	7.3			105
110											25.2	24.8	24.3	23.6	17.5	24.7	24.2	23.6	23	8			110
115											23.5	23.1	22.7	20.2	15.4	23.3	22.8	22.2	21.5	9.1			115
120											20.5	16.8	14.5	10.8	6.1	21.7	21.3	20.8	20.2	10.7			120
125																20.3	19.9	19.5	18.9	13			125
130																19	18.6	17.8	14.6	10.4			130
135																12.6	9.4	7.5	4.7				135

t_242_00110_00_001 / 00210_00_001 / 00310_00_001 / 00410_00_001 / 00510_00_001

Lifting capacities Forces de levage

T

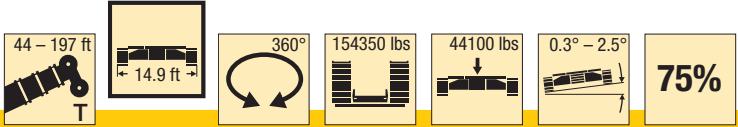


ft	156 ft					171 ft					185 ft				197 ft				ft	
	0.3°	0.7°	1.5°	2.5°	4°	0.3°	0.7°	1.5°	2.5°	4°	0.3°	0.7°	1.5°	2.5°	0.3°	0.7°	1.5°	2.5°		
30	81																			30
32	79.6																			32
34	77.9	72.7				64.6														34
36	75.9	70.9				63.8														36
38	73.9	69.2	61.5			62.5	58.5													38
40	71.9	67.4	60.9	34.9		61.2	57.3				52.1									40
45	67.1	63.2	58.4	34.9		57.7	54.2	47.1	25.6		49.8	46.6	35.3		41.8	38.9				45
50	62.8	59.3	55	34.9		54.3	51.2	46.5	25.6		47.1	44.3	35.2	17.4	40	37.4	27.7			50
55	58.8	55.7	51.7	34.9		51.1	48.3	45.1	25.6		44.6	42	35	17.4	38	35.7	27.6	12.7		55
60	54.9	52.1	48.7	34.9		48.2	45.8	42.9	25.6		42.2	39.9	34.7	17.4	36.1	34	27.5	12.7		60
65	51	48.7	45.8	34.9		45.6	43.5	40.8	25.6		39.9	37.9	34.2	17.4	34.3	32.4	27.4	12.7		65
70	46.5	44.8	42.7	34.9		43.1	41.2	38.9	25.6		37.9	36.1	33.1	17.4	32.6	30.9	27.4	12.7		70
75	42.4	40.7	38.8	34.6		40.9	39.2	37	25.6		36	34.3	31.8	17.4	31	29.4	26.7	12.7		75
80	38.4	36.9	35.3	33.3		38.1	36.5	34.6	25.6		34.2	32.6	30.5	17.4	29.5	28	25.9	12.7		80
85	35.6	34.3	32.8	31		34.8	33.4	31.9	25.6		32.5	31.1	29.2	17.4	28	26.7	25	12.7		85
90	32.7	31.5	30.3	28.8		32.2	30.9	29.5	25.6		30.9	29.6	28	17.4	26.7	25.5	24	12.7		90
95	30.4	29.5	28.4	27		29.4	28.3	27.1	25.1		29.1	27.9	26.6	17.4	25.4	24.4	23	12.7		95
100	28.2	27.3	26.3	25.1		27.4	26.4	25.3	23.8		26.7	25.6	24.4	17.4	24.3	23.3	22.1	12.7		100
105	26	25.2	24.4	23.3		25.6	24.7	23.7	22.5		24.5	23.5	22.4	17.4	23.2	22.3	21.2	12.7		105
110	24.1	23.4	22.6	21.7		23.6	22.8	22	20.8		22.5	21.6	20.6	17.4	22.2	21.3	20.3	12.7		110
115	22.3	21.7	21	20.1	2.6	21.8	21.1	20.3	19.3		20.6	19.8	18.9	17.3	20.8	19.9	19	12.7		115
120	20.7	20.2	19.6	18.8	3.5	20.1	19.5	18.7	17.8		18.9	18.1	17.3	16.3	19.1	18.3	17.4	12.7		120
125	19.4	18.9	18.3	17.6	4.2	18.6	18	17.3	16.5		17.3	16.7	15.9	15	17.6	16.8	16	12.7		125
130	18	17.6	17.1	16.4	5	17.1	16.6	16	15.3		15.9	15.3	14.6	13.8	16.1	15.5	14.7	12.7		130
135	16.7	16.3	15.9	15.3	6.1	15.8	15.3	14.8	14.1		14.6	14	13.4	12.7	14.8	14.2	13.5	12.4		135
140	15.5	15.2	14.8	14.1	8.2	14.6	14.2	13.7	13.1		13.4	12.9	12.3	11.6	13.6	13	12.4	11.7		140
145	14.4	14.2	12.5	9.7	6.2	13.5	13.1	12.7	12.2		12.3	11.8	11.3	10.7	12.5	11.9	11.4	10.7		145
150						12.5	12.1	11.8	11.3	2.6	11.2	10.8	10.4	9.8	11.4	10.9	10.4	9.8		150
155						11.5	11.3	10.9	10	4.5	10.2	9.9	9.5	9	10.4	10	9.5	9		155
160						10.7	9.6	8.2	6	3	9.4	9	8.7	8.2	9.5	9.1	8.7	8.2		160
165											8.5	8.3	7.9	7.6	8.7	8.3	7.9	7.3		165
170											7.8	7.6	7.3	6.4	7.9	7.6	7.2	6.4		170
175											7.1	5.8	4.6	2.6	7.1	6.9	6.6	5.4		175
180															6.4	6.2	5.9	4.6		180
185															5.8	5.6	5.1	3.4		185

t_242_00110_00_001 / 00210_00_001 / 00310_00_001 / 00410_00_001 / 00510_00_001

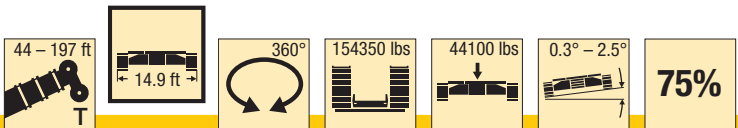
Lifting capacities Forces de levage

T



ft	44 ft				58 ft				72 ft				86 ft				100 ft				114 ft				ft
	0.3°	0.7°	1.5°	2.5°	0.3°	0.7°	1.5°	2.5°	0.3°	0.7°	1.5°	2.5°	0.3°	0.7°	1.5°	2.5°	0.3°	0.7°	1.5°	2.5°	0.3°	0.7°	1.5°	2.5°	
30	116.2												105.4												30
32	105.8	103.4	100.7		105.2				103.6	99			97.4												32
34	96.9	95	92.9		99.3	94.6	89.6		97.6	90.8	86.5		93.5	86.1											34
36	89.1	84.2	78.1		91.5	87.3	84.3		89.8	86.3	79.8		87.4	80.4			82.4	78.3							36
38					85.9	83.6	79.8	75.3	85.5	79.9	76.6	70.1	81.4	77.9	71.3		80.8	73.3							38
40					79.9	77.9	75.6	70.4	79.5	76.7	71.4	67.9	78.9	72.5	68.9	62.4	75.9	68.8			71.7	68.1			40
45					67.6	66.2	64.7	60.3	69.2	67.1	64.9	60.3	69.4	64.1	61.4	55.2	68.6	62.5	59.4	52.7	66.8	59	55.8		45
50					58.2	57.4	53.1	42.2	59.6	58.1	56.4	54.4	59.8	57.9	55.8	50.6	61.7	57.5	55	48.2	59.6	55.9	48.8	45.7	50
55									52.5	51.4	50.1	48.6	52.2	50.7	49.1	47.4	54	52.1	50.1	45.9	53.2	51.1	48.8	43.9	55
60									46.4	45.6	44.6	43.5	47.7	46.6	45.3	43.7	47.8	46.3	44.6	42.7	46.9	45.2	43.3	40	60
65													42.7	41.7	40.7	39.4	42.6	41.4	40.1	38.4	41.8	40.4	38.8	37	65
70													38.4	37.7	36.8	35.8	38.3	37.3	36.2	34.8	38.7	37.6	36.3	34.7	70
75													34.8	34.2	33.6	32.8	34.6	33.8	32.9	31.7	35.1	34.1	33	31.6	75
80																	31.6	31.1	30.3	29.4	31.9	31.1	30.1	29	80
85																	29	28.5	27.9	27.1	29.1	28.4	27.6	26.6	85
90																	26.6	26.2	25.8	25.2	26.7	26.1	25.4	24.6	90
95																					24.6	24.1	23.5	22.8	95
100																					22.7	22.3	21.8	21.2	100
105																					21	20.7	20.4	17.9	105

t_242_00120_00_001 / 00220_00_001 / 00320_00_001 / 00420_00_001

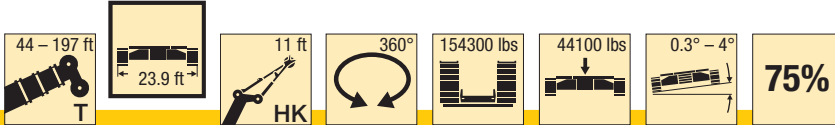


ft	128 ft				142 ft				156 ft				171 ft				185 ft				197 ft				ft
	0.3°	0.7°	1.5°	2.5°	0.3°	0.7°	1.5°	2.5°	0.3°	0.7°	1.5°	2.5°	0.3°	0.7°	1.5°	2.5°	0.3°	0.7°	1.5°	2.5°	0.3°	0.7°	1.5°	2.5°	
45	63.4	58.9			59.8																				45
50	58.7	55.5	49		55.7	49.8			52.7																50
55	52.2	49.9	47.4	42	51.2	48.9	44.7	38.7	49.2	45.6	40.6		47.2												55
60	47.7	45.7	43.6	39.6	46.5	44.4	41.8	36.7	45	42.8	39.7	34.6	42.8	40.1	36.1	24.9	40.8				36.1				60
65	42.6	41	39.2	37.1	41.7	39.9	37.9	35.3	40.7	38.9	36.8	33.5	39.1	37.2	35	25.6	36.8	34.7	32.4	17.4	34.3	32.4	27.4		65
70	38.2	36.9	35.4	33.6	37.9	36.4	34.7	32.7	36.9	35.3	33.5	31.4	35.5	33.8	31.9	25.6	33.2	31.5	29.5	17.4	32.6	30.9	27.4	12.7	70
75	34.5	33.3	32	30.5	34.4	33.1	31.7	30	33.8	32.3	30.8	28.9	32.3	30.8	29.1	25.2	30.1	28.5	26.8	17.4	29.8	28.2	26	12.7	75
80	31.3	30.3	29.2	27.9	31.2	30	28.8	27.3	30.6	29.3	27.9	26.3	29.4	28.1	26.6	24.3	27.3	25.9	24.4	17.4	27.1	25.6	24	12.7	80
85	28.8	27.9	27	25.8	28.4	27.4	26.3	25	27.8	26.7	25.5	24	26.9	25.7	24.3	22.7	24.8	23.6	22.2	17.4	24.6	23.3	21.9	12.7	85
90	26.3	25.6	24.7	23.7	25.9	25.1	24.1	23	25.3	24.3	23.3	22	24.5	23.5	22.3	20.8	22.6	21.5	20.2	17.3	22.4	21.2	19.9	12.7	90
95	24.2	23.5	22.8	21.9	23.7	23	22.1	21.1	23.1	22.3	21.3	20.1	22.3	21.4	20.3	19	20.6	19.6	18.4	17	20.4	19.4	18.2	12.7	95
100	22.2	21.7	21	20.3	21.8	21.1	20.4	19.5	21.1	20.3	19.4	18.4	20.3	19.4	18.4	17.2	18.8	17.8	16.8	15.5	18.6	17.7	16.6	12.7	100
105	20.5	20	19.4	18.7	20	19.4	18.7	17.9	19.3	18.6	17.8	16.8	18.4	17.6	16.7	15.7	17.1	16.2	15.3	14.1	17	16.1	15.1	12.7	105
110	18.9	18.4	17.9	17.3	18.4	17.8	17.2	16.5	17.6	17	16.3	15.4	16.7	16	15.2	14.3	15.5	14.7	13.9	12.8	15.5	14.7	13.8	12.4	110
115	17.4	17	16.6	16.1	16.9	16.4	15.9	15.2	16.1	15.5	14.9	14.1	15.2	14.6	13.9	13	14	13.3	12.5	11.6	14.2	13.4	12.6	11.5	115
120	16.1	15.8	14.5	10.8	15.5	15.1	14.6	14.1	14.7	14.2	13.6	12.9	13.8	13.2	12.6	11.8	12.6	12	11.3	10.4	12.8	12.2	11.4	10.5	120
125					14.3	13.9	13.5	13	13.4	13	12.5	11.9	12.5	12	11.5	10.8	11.3	10.8	10.1	9.3	11.6	10.9	10.3	9.4	125
130					13.2	12.9	12.5	12.1	12.3	11.9	11.4	10.9	11.4	10.9	10.4	9.8	10.2	9.6	9.1	8.4	10.4	9.8	9.2	8.4	130
135					12.2	9.4	7.5	4.7	11.2	10.9	10.5	10	10.3	9.9	9.4	8.9	9.1	8.6	8.1	7.4	9.3	8.8	8.2	7.5	135
140									10.2	9.9	9.6	9.2	9.3	9	8.5	8	8.1	7.7	7.2	6.6	8.3	7.8	7.3	6.7	140
145									9.4	9.1	8.8	8.5	8.4	8.1	7.7	7.3	7.2	6.8	6.4	5.8	7.4	7	6.5	5.9	145
150													7.6	7.3	7	6.6	6.4	6	5.6	5.1	6.5	6.1	5.7	5.1	150
155																	6.8	6.6	6.3	5.9	5.6	5.2	4.9	4.5	155
160																	6.2	6	5.7	5.4	4.9	4.6	4.3	3.8	160
165																					4.2	3.9	3.7	3.3	165
170																					3.6	3.4	3.1	2.7	170
175																					3	2.9	2.7	2.4	175
180																					2.5	2.3			180

t_242_00120_00_001 / 00220_00_001 / 00320_00_001 / 00420_00_001

Lifting capacities Forces de levage

THK

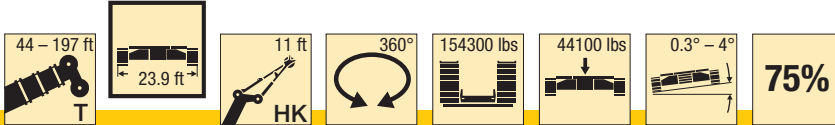


ft	44 ft					58 ft					72 ft					86 ft					ft		
	0.3°	0.7°	1.5°	2.5°	4°	0.3°	0.7°	1.5°	2.5°	4°	0.3°	0.7°	1.5°	2.5°	4°	0.3°	0.7°	1.5°	2.5°	4°			
10	90.9	85.3				90.9																10	
11	90.9	85.3				90.9																	11
12	90.9	85.3	85.3			90.9																	12
13	90.9	85.3	85.3	80.6		90.9	85.3																13
14	90.9	85.3	85.3	80.6		90.9	85.3				90.9												14
15	90.9	85.3	85.3	80.6		90.9	85.3	85.3			90.9												15
16	90.9	85.3	85.3	80.6		90.9	85.3	85.3			90.9	85.3				90.9							16
17	90.9	85.3	85.3	80.6		90.9	85.3	85.3	80.6		90.9	85.3				90.9							17
18	90.9	85.3	85.3	80.6	48.5	90.9	85.3	85.3	80.6		90.9	85.3	85.3			90.9							18
19	90.9	85.3	85.3	80.6	48.5	90.9	85.3	85.3	80.6		90.9	85.3	85.3			90.9	85.3						19
20	90.9	85.3	85.3	80.6	48.5	90.9	85.3	85.3	80.6		90.9	85.3	85.3			90.9	85.3						20
22	90.9	85.3	85.3	80.6	48.5	90.9	85.3	85.3	80.6		90.9	85.3	85.3	80.6		90.9	85.3	85.3					22
24	90.9	85.3	85.3	80.6	48	90.9	85.3	85.3	80.6	48.5	90.9	85.3	85.3	80.6		90.9	85.3	85.3					24
26	90.9	85.3	85.3	80.6	46	90.9	85.3	85.3	80.6	48.5	90.9	85.3	85.3	80.6		90.9	85.3	85.3	80.6				26
28	90.9	85.3	84.6	76.9	43.7	90.9	85.3	85.3	80.6	48.5	90.9	85.3	85.3	80.6	40.6	90.9	85.3	85.3	80.6				28
30	90.9	84.3	80.2	72.9	41.4	90.9	85.3	85.3	80.6	48.2	90.9	85.3	85.3	80.6	40.9	90.9	85.3	85.3	80.6				30
32	89.3	80.3	75.8	68.9	39.1	90.9	85.3	85.3	80.6	47	90.9	85.3	85.3	80.6	41.6	90.9	85.3	85.3	80.6	27.5			32
34	84.1	75.7	71.4	64.9	37.8	90.9	85.3	85.3	79.4	45.2	90.9	85.3	85.3	80.6	42.2	90.9	85.3	85.3	80.6	27.7			34
36	79	71.1	67.3	62.6	37	90.9	85.3	83.9	76.2	43.4	90.9	85.3	85.3	80.6	42.8	90.9	85.3	85.3	80.6	27.7			36
38	74.6	67.1	65.6	61.2	36.2	90.9	84.5	80.5	73.1	41.6	90.9	85.3	85.3	80.6	43.1	90.9	85.3	85.3	80.6	27.6			38
40	72.4	65.2	63.9	59.7	35.3	90	81.7	77.1	70	39.7	90.9	85.3	85.3	80.6	43.3	90.9	85.3	85.3	80.6	27.4			40
45	67.3	60.6	59.8	55.6	32.9	80.7	72.7	68.5	63.2	37.3	90.9	85.3	82	74.5	42.4	90.9	85.3	85.3	80.1	27.3			45
50						73.3	66	64.7	60.3	35.7	88.4	79.5	75	68.2	38.8	90.7	85.3	82.7	74.5	27.3			50
55						69.4	62.5	61.5	57.5	34.1	80.2	72.2	68.1	63	37.2	82	78.4	74.8	68.6	27.3			55
60						64.6	57.7	54.3	47.7	31.8	73.3	66.5	65.1	60.7	35.9	72.9	70.2	67.2	62.9	27.3			60
65											66	63.4	61.4	55.2	34.6	65.3	63.1	60.8	58.4	27.3			65
70											59.5	54.7	52.9	46.8	33	59.3	58.5	57.4	53.7	27.3			70
75											46.8	39.4	36.1	30.4	22.5	55.6	54.3	53	48.1	29.7			75
80																50.8	49.2	47	41.8	29.7			80
85																46.5	41.1	38.7	33.6	25.5			85
90																29.2	24.6	21.5	16.4	9.5			90

t_242_07100_00_000 / 07200_00_000 / 07300_00_000 / 07400_00_000 / 07500_00_000

Lifting capacities Forces de levage

THK

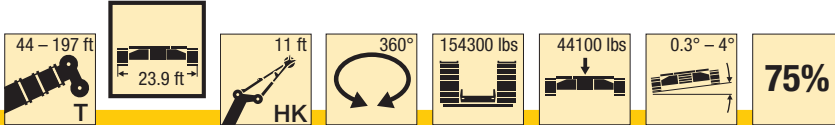


ft	100 ft					114 ft					128 ft					142 ft					ft	
	0.3°	0.7°	1.5°	2.5°	4°	0.3°	0.7°	1.5°	2.5°	4°	0.3°	0.7°	1.5°	2.5°	4°	0.3°	0.7°	1.5°	2.5°	4°		
19	90.9																					19
20	90.9																					20
22	90.9																					22
24	90.9	85.3				90.9																24
26	90.9	85.3	85.3			90.9																26
28	90.9	85.3	85.3			90.9	85.3				90.9											28
30	90.9	85.3	85.3	80.6		90.9	85.3	85.3			90.9											30
32	90.9	85.3	85.3	80.6		90.9	85.3	85.3			90.7	85.3				72.7						32
34	90.9	85.3	85.3	80.6		90.9	85.3	85.3	71.5		90.1	85				78.4						34
36	90.9	85.3	85.3	80.6		90.9	85.3	85.3	71.5		88.9	83.7	76.8			76.2	71.4					36
38	90.9	85.3	85.3	80.6	18.2	90.9	85.3	83.2	71.5		86.9	81.1	74.6	52.1		74.1	69.5					38
40	90.9	85.3	85.3	80.6	18.2	89.7	85.3	81.6	71.5		84	78.5	72.4	52.1		72.1	67.6	62.1				40
45	90.9	85.3	84.7	76.2	18.2	83.8	81.1	77.7	71.4	11	77	72.4	67.3	52.1		67.2	63.3	58.6	37.4			45
50	89.5	82.6	78.8	70.2	18.2	79.5	77	74.2	68.2	11.1	71.2	67.3	62.8	52.1	4.5	62.7	59.3	55.2	37.4			50
55	80.5	75.7	71.7	66.3	18.2	75.7	73.6	70.6	63.2	11.2	65.8	62.2	58.4	52.1	4.6	58.7	55.6	51.8	37.4			55
60	71.4	67.9	66	62.3	18.2	71.7	68.6	64.5	58.8	11.4	60.8	57.7	54.5	50.2	5	54.8	52.1	48.7	37.4			60
65	65.8	64	61	57.7	18.2	65.1	61.8	58.3	54.3	11.7	56.1	53.5	50.8	47.4	5.5	51.2	48.8	45.7	37.5			65
70	60.3	58	55.6	52.9	18.9	58.7	56	53	49.7	12.1	52.2	49.8	47.5	44.6	5.9	47.8	45.7	43	37.7			70
75	54.7	52.9	50.9	48.7	20.1	53.1	50.8	48.4	45.6	12.6	48.4	46.4	44.4	41.8	6.4	44.8	42.9	41.1	36.9			75
80	49.8	48.4	46.8	45	21.5	48.3	46.4	44.3	42	13.2	45.1	43.3	41.6	39.1	6.7	42.3	40.9	39.2	36.3			80
85	45.6	44.4	43.2	40.7	23.5	44	42.4	40.7	38.8	14	41.9	40.3	38.4	36.1	7	40.3	38.9	37.2	35.2			85
90	41.9	41	40	36.1	26.4	40.3	39	37.6	36	15.5	38.7	37.1	35.7	34.5	7.4	38	36.8	35.2	33.3			90
95	38.5	37.1	35.2	30.8	26.9	37	35.9	34.7	33.4	17.1	35.9	35.2	34.3	33.2	7.9	35.8	34.6	33	30.9			95
100	35.2	29.9	29	25.1	19.7	34	33.1	32.2	30.7	19.9	34.5	33.7	32.6	31.2	8.5	33.5	32.1	30.5	28.7	2.2		100
105						31.3	30.7	30.3	28.7	21.9	32.4	31.4	30.3	29.1	9.5	30.8	29.6	28.2	26.7	2.7		105
110						30.1	29.5	27.8	24	19.2	30	29.1	28.2	27.2	10.7	28.4	27.3	26.5	25.5	3.5		110
115						27.5	23	21.2	18.2	13.3	27.8	27.1	26.4	24.7	12.5	26.8	26.1	25.2	24.1	4.3		115
120											25.8	25.2	24.4	21.7	14.8	25.1	24.3	23.6	22.9	4.9		120
125											23.9	21.9	21.4	18.5	14.3	23.6	23.2	22.8	22.1	5.8		125
130											21	17.2	15.5	12.2	7.8	22.7	22.2	21.7	19.8	7		130
135																21.2	20.8	19.6	17	9.3		135
140																19.8	17.3	16.5	13.7	9.6		140
145																15	11.9	10	7.4	3.9		145

t_242_07100_00_000 / 07200_00_000 / 07300_00_000 / 07400_00_000 / 07500_00_000

Lifting capacities Forces de levage

THK

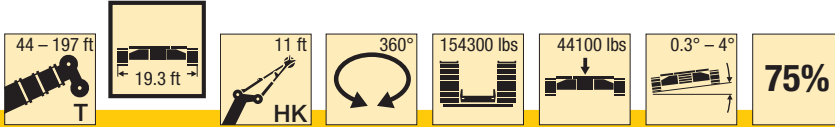


ft	156 ft					171 ft				185 ft				197 ft				ft
	0.3°	0.7°	1.5°	2.5°	4°	0.3°	0.7°	1.5°	2.5°	0.3°	0.7°	1.5°	2.5°	0.3°	0.7°	1.5°	2.5°	
40	61.3	58				48.4												40
45	58.1	54.9	49.7			49.9	46.8			41.9								45
50	54.9	51.8	48.1	27.4		47.1	44.4	37.3	18.8	40.2	38			35.1				50
55	51.7	48.9	45.8	27.4		44.4	42	37.3	18.8	38.4	36.4	28.4	13.2	33.6	31.6	20.7		55
60	48.8	46.3	43.5	27.4		42	39.9	36.7	18.8	36.6	34.7	28.4	13.2	32	30.2	20.7	9.1	60
65	46.1	43.9	41.4	27.4		39.9	38.2	35.5	18.8	34.8	33.1	28.3	13.2	30.6	28.8	20.6	9.1	65
70	43.6	41.6	39.3	27.4		38.1	36.5	34.1	18.8	33.2	31.6	28.2	13.2	29.1	27.5	20.6	9.1	70
75	41.3	39.5	37.4	27.4		36.4	34.9	32.6	18.8	31.6	30.2	27.7	13.2	27.7	26.2	20.6	9.1	75
80	39.2	37.5	35.6	27.4		34.7	33.2	31.2	18.8	30.1	28.8	26.9	13.2	26.4	25.1	20.5	9.1	80
85	37.1	35.6	33.8	27.4		33	31.7	29.9	18.8	28.7	27.5	26	13.2	25.2	23.9	20.3	9.1	85
90	35.2	33.8	32.1	27.4		31.4	30.3	28.6	18.8	27.4	26.3	24.9	13.2	24	22.8	20.1	9.1	90
95	33.3	32	30.5	27.4		30	29	27.5	18.8	26.2	25.2	23.9	13.2	22.9	21.8	19.6	9.1	95
100	31.5	30.4	29	26.9		28.6	27.6	26.3	19	25	24.1	23	13.2	21.8	20.8	18.9	9.1	100
105	29.8	28.7	27.4	26		27.4	26.4	25.2	19.3	24	23.1	22.1	13.2	20.8	19.9	18.3	9.1	105
110	28.1	27	26.2	24.8		26.2	25.3	24.2	19.5	22.9	22.1	21.1	13.2	19.9	19.1	17.5	9.1	110
115	26.6	25.8	24.5	23.1		25.1	24.2	23.2	19.8	22	21.2	20.3	13.2	19	18.3	16.8	9.1	115
120	24.9	23.9	22.8	21.6		23.9	23.1	22	19.4	21.1	20.4	19.5	13.2	18.1	17.4	16.2	9.1	120
125	23	22.1	21.2	20.1		22.6	21.5	20.4	18.8	20.2	19.5	18.7	13.2	17.4	16.7	15.5	9.1	125
130	21.3	20.6	20.1	19.2		20.9	20.2	19.4	17.2	19.4	18.8	18	13.2	16.6	16	14.9	9.1	130
135	20.2	19.8	19.2	17.9		19.8	18.9	18.1	15.9	18.6	18	17.3	13.2	15.9	15.3	14.3	9.1	135
140	19.1	18.6	18	16.6		18.3	17.6	16.8	14.8	17.8	17.2	16.3	12.7	15.3	14.7	13.8	9.1	140
145	17.8	17.6	17.3	15.2	3	16.9	16.3	15.7	13.5	16.7	15.9	15.1	11.3	14.6	14.1	13.3	9.1	145
150	17.1	16.5	15.2	12.9	4.6	15.7	15.3	14.9	12.2	15.4	14.8	14	10	14	13.6	12.8	8.7	150
155	15.7	13.2	11.8	9.2	6.1	15	14.7	14.3	11	14.3	13.7	13	8.7	13.4	13	12.3	7.7	155
160	9.1	6.9	5.3	3.1		14.2	13.9	13.4	9.8	13.1	12.6	12.1	7.6	12.9	12.4	11.8	6.6	160
165						13.2	12.5	11.2	8.7	12.1	11.7	11.2	6.5	12.1	11.5	10.9	5.5	165
170						11.4	9.1	7.8	5.8	11.1	10.8	10.4	5.5	11.1	10.6	10.1	4.5	170
175										10.2	10	9.6	4.6	10.2	9.8	8.9	3.5	175
180										9.5	8.6	7.5	3.7	9.4	9.1	7.6	2.7	180
185										7.5	5.7	4.5	2.7	8.8	8.5	6.5		185
190														8.1	7.7	5.4		190
195														7.3	5.7	4.4		195
200														3.3				200

t_242_07100_00_000 / 07200_00_000 / 07300_00_000 / 07400_00_000 / 07500_00_000

Lifting capacities Forces de levage

THK

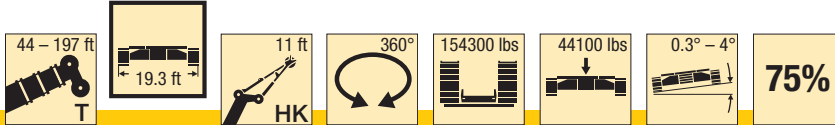


ft	44 ft					58 ft					72 ft					86 ft					ft		
	0.3°	0.7°	1.5°	2.5°	4°	0.3°	0.7°	1.5°	2.5°	4°	0.3°	0.7°	1.5°	2.5°	4°	0.3°	0.7°	1.5°	2.5°	4°			
10	90.9					90.9																10	
11	90.9					90.9																	11
12	90.9	85.3				90.9																	12
13	90.9	85.3				90.9	85.3																13
14	90.9	85.3	85.3			90.9	85.3				90.9												14
15	90.9	85.3	85.3			90.9	85.3	85.3			90.9												15
16	90.9	85.3	85.3			90.9	85.3	85.3			90.9	85.3				90.9							16
17	90.9	85.3	85.3	80.6		90.9	85.3	85.3	80.6		90.9	85.3				90.9							17
18	90.9	85.3	85.3	80.6		90.9	85.3	85.3	80.6		90.9	85.3	85.3			90.9							18
19	90.9	85.3	85.3	80.6		90.9	85.3	85.3	80.6		90.9	85.3	85.3			90.9	85.3						19
20	90.9	85.3	85.3	80.6	48.5	90.9	85.3	85.3	80.6		90.9	85.3	85.3			90.9	85.3						20
22	90.9	85.3	85.3	80.6	48.5	90.9	85.3	85.3	80.6		90.9	85.3	85.3	80.6		90.9	85.3	85.3					22
24	90.9	85.3	85.3	80.6	48	90.9	85.3	85.3	80.6	48.5	90.9	85.3	85.3	80.6		90.9	85.3	85.3					24
26	90.9	85.3	85.3	80.6	46	90.9	85.3	85.3	80.6	48.5	90.9	85.3	85.3	80.6		90.9	85.3	85.3	80.6				26
28	90.9	85.3	84.6	76.9	43.7	90.9	85.3	85.3	80.6	48.5	90.9	85.3	85.3	80.6	40.6	90.9	85.3	85.3	80.6				28
30	90.9	84.3	80.2	72.9	41.4	90.9	85.3	85.3	80.6	48.2	90.9	85.3	85.3	80.6	40.9	90.9	85.3	85.3	80.6				30
32	89.3	80.3	75.8	68.9	39.1	90.9	85.3	85.3	80.6	47	90.9	85.3	85.3	80.6	41.6	90.9	85.3	85.3	80.6	27.5			32
34	84.1	75.7	71.4	64.9	37.8	90.9	85.3	85.3	79.4	45.2	90.9	85.3	85.3	80.6	42.2	90.9	85.3	85.3	80.6	27.7			34
36	79	71.1	67.3	62.6	37	90.9	85.3	83.9	76.2	43.4	90.9	85.3	85.3	80.6	42.8	90.9	85.3	85.3	80.6	27.7			36
38	74.6	67.1	65.6	61.2	36.2	90.9	84.5	80.5	73.1	41.6	90.9	85.3	85.3	80.6	43.1	90.9	85.3	85.3	80.6	27.6			38
40	72.4	65.2	63.9	59.7	35.3	90	81.7	77.1	70	39.7	90.9	85.3	85.3	80.6	43.3	90.9	85.3	85.3	80.6	27.4			40
45	67.3	60.6	59.8	55.6	32.9	80.7	72.7	68.5	63.2	37.3	90.7	85.2	82	74.5	42.4	89.8	84.6	83.3	78.7	27.3			45
50						73.3	66	64.7	60.3	35.7	78.8	76.5	73.9	68.2	38.8	78.1	75.2	72.2	68.6	27.3			50
55						68.4	62.5	61.5	57.5	34.1	68.7	66.9	64.9	62.2	37.2	68.4	66.9	65.1	62.4	27.3			55
60						60.2	57.7	54.3	47.7	31.8	60.6	59.1	58.2	56.8	35.9	62.1	60.3	58.3	56	27.3			60
65											55.4	54.3	53.1	51.6	34.6	55.3	53.9	52.3	50.4	27.3			65
70											49.8	49	48.1	46.5	33	49.7	48.5	47.2	45.7	27.3			70
75											45	39.4	36.1	30.4	22.5	45	44	42.9	41.7	29.7			75
80																40.8	40.1	39.2	38.2	29.6			80
85																37.3	36.7	36	33.6	25.5			85
90																29.2	24.6	21.5	16.4	9.5			90

t_242_07110_00_000 / 07210_00_000 / 07310_00_000 / 07410_00_000 / 07510_00_000

Lifting capacities Forces de levage

THK

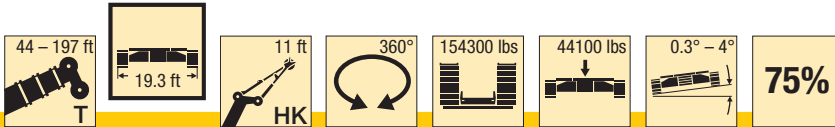


ft	100 ft					114 ft					128 ft					142 ft					ft		
	0.3°	0.7°	1.5°	2.5°	4°	0.3°	0.7°	1.5°	2.5°	4°	0.3°	0.7°	1.5°	2.5°	4°	0.3°	0.7°	1.5°	2.5°	4°			
19	90.9																					19	
20	90.9																						20
22	90.9																						22
24	90.9	85.3				90.9																	24
26	90.9	85.3	85.3			90.9																	26
28	90.9	85.3	85.3			90.9	85.3				90.9												28
30	90.9	85.3	85.3	80.6		90.9	85.3	85.3			90.9												30
32	90.9	85.3	85.3	80.6		90.9	85.3	85.3			90.7	85.3				72.7							32
34	90.9	85.3	85.3	80.6		90.9	85.3	85.3	71.5		90.1	85				78.4							34
36	90.9	85.3	85.3	80.6		90.9	85.3	85.3	71.5		88.9	83.7	76.8			76.2	71.4						36
38	90.9	85.3	85.3	80.6	18.2	90.9	85.3	83.2	71.5		86.9	81.1	74.6	52.1		74.1	69.5						38
40	90.9	85.3	85.3	80.6	18.2	89.7	85.3	81.6	71.5		84	78.5	72.4	52.1		72.1	67.6	62.1					40
45	88.7	84	80.8	75.7	18.2	83.8	81.1	77.4	71	11	77	72.4	67.3	52.1		67.2	63.3	58.6	37.4				45
50	76.8	74.7	71.6	68	18.2	77.3	74	70.4	65.9	11.1	71.1	67.3	62.8	52.1	4.5	62.7	59.3	55.2	37.4				50
55	69.4	66.8	64	60.7	18.2	68	65.1	61.9	58.3	11.2	64.9	61.9	58.4	52.1	4.6	58.7	55.6	51.8	37.4				55
60	61.3	59.2	56.9	54.2	18.2	59.9	57.5	54.9	51.9	11.4	58.3	55.7	52.9	49.5	5	54.8	52.1	48.7	37.4				60
65	54.6	52.8	50.9	48.7	18.2	53.1	51.1	49	46.5	11.7	51.7	49.5	47.2	44.4	5.5	50.5	48.2	45.6	37.5				65
70	48.9	47.5	45.9	44	18.9	47.6	45.9	44.1	42	12.1	47.1	45.2	43.2	40.8	5.9	46.3	44.6	42.5	37.7				70
75	44.1	42.9	41.6	40	20.1	42.8	41.4	39.9	38	12.6	43	41.6	40.1	38.2	6.4	42.4	40.7	38.8	36.2				75
80	40	39	37.9	36.6	21.5	38.9	37.7	36.6	35.4	13.2	39.7	38.3	36.8	35.1	6.7	38.3	36.9	35.2	33.2				80
85	36.5	35.6	34.7	33.6	23.5	36.7	35.9	35.1	33.9	14	36.1	34.9	33.7	32.1	7	35.6	34.3	32.8	31.1				85
90	33.4	32.7	31.9	31	26.4	34.3	33.5	32.5	31.3	15.5	33	32	30.9	29.5	7.4	32.5	31.3	30.1	28.6				90
95	30.8	30.5	30.2	29.8	26.9	31.6	30.8	30	29	17.1	30.2	29.3	28.4	27.2	7.9	30.1	29.3	28.3	27				95
100	29.8	29.5	28.9	25.1	19.7	29.1	28.5	27.8	26.9	19.9	28.1	27.4	26.5	25.5	8.5	28.3	27.5	26.5	25.3	2.2			100
105						26.9	26.4	25.8	25	21.5	25.9	25.3	24.7	24	9.5	26.1	25.3	24.5	23.4	2.7			105
110						25	24.5	24	23.4	19.2	24.7	24.2	23.7	23.1	10.7	24.1	23.5	22.7	21.7	3.5			110
115						23.2	22.7	21.2	18.2	13.3	23.6	23.1	22.5	21.8	12.5	22.3	21.7	21.1	20.3	4.3			115
120											21.9	21.5	21	20.4	14.8	21	20.4	19.8	19	4.9			120
125											20.5	20.1	19.6	18.5	14.3	19.4	18.9	18.5	18	5.8			125
130											19	17.2	15.5	12.2	7.8	18.5	18.2	17.8	17.3	7			130
135																17.5	17.1	16.7	16.1	9.3			135
140																16.2	15.9	15.6	13.7	9.6			140
145																15	11.9	10	7.4	3.9			145

t_242_07110_00_000 / 07210_00_000 / 07310_00_000 / 07410_00_000 / 07510_00_000

Lifting capacities Forces de levage

THK



ft	156 ft				171 ft				185 ft				197 ft				ft	
	0.3°	0.7°	1.5°	2.5°	4°	0.3°	0.7°	1.5°	2.5°	0.3°	0.7°	1.5°	2.5°	0.3°	0.7°	1.5°		2.5°
40	61.3	58				48.4												40
45	58.1	54.9	49.7			49.9	46.8			41.9								45
50	54.9	51.8	48.1	27.4		47.1	44.4	37.3	18.8	40.2	38			35.1				50
55	51.7	48.9	45.8	27.4		44.4	42	37.3	18.8	38.4	36.4	28.4	13.2	33.6	31.6	20.7		55
60	48.8	46.3	43.5	27.4		42	39.9	36.7	18.8	36.6	34.7	28.4	13.2	32	30.2	20.7	9.1	60
65	46.1	43.9	41.4	27.4		39.9	38.2	35.5	18.8	34.8	33.1	28.3	13.2	30.6	28.8	20.6	9.1	65
70	43.6	41.6	39.3	27.4		38.1	36.5	34.1	18.8	33.2	31.6	28.2	13.2	29.1	27.5	20.6	9.1	70
75	41.2	39.4	37.3	27.4		36.4	34.9	32.6	18.8	31.6	30.2	27.7	13.2	27.7	26.2	20.6	9.1	75
80	38.2	36.5	34.7	27.4		34.7	33.2	31.2	18.8	30.1	28.8	26.9	13.2	26.4	25.1	20.5	9.1	80
85	34.6	33.2	31.6	27.4		33	31.7	29.9	18.8	28.7	27.5	26	13.2	25.2	23.9	20.3	9.1	85
90	32	30.9	29.6	26.9		31.4	30.2	28.6	18.8	27.4	26.3	24.9	13.2	24	22.8	20.1	9.1	90
95	29.6	28.4	27.2	25.8		29.1	27.9	26.6	18.8	26.2	25.2	23.9	13.2	22.9	21.8	19.6	9.1	95
100	27.7	26.7	25.6	24.3		26.7	25.7	24.4	19	25	24.1	23	13.2	21.8	20.8	18.9	9.1	100
105	25.6	24.7	23.8	22.6		24.9	23.9	22.8	19.3	24	23	21.9	13.2	20.8	19.9	18.3	9.1	105
110	23.6	22.9	22.1	21.1		22.9	22	20.9	19.5	22.6	21.6	20.6	13.2	19.9	19.1	17.5	9.1	110
115	22.3	21.5	20.7	19.7		21.4	20.7	19.8	18.3	20.8	19.9	18.9	13.2	19	18.3	16.8	9.1	115
120	20.6	19.9	19.2	18.3		20	19.3	18.4	17.4	19	18.2	17.3	13.2	18.1	17.4	16.2	9.1	120
125	19	18.4	17.7	16.9		18.4	17.7	17	16.1	17.4	16.7	15.9	13.2	17.2	16.5	15.5	9.1	125
130	17.5	17	16.4	15.7		17	16.3	15.7	14.9	16	15.3	14.5	13.1	15.9	15.2	14.4	9.1	130
135	16.3	15.9	15.4	14.8		15.6	15.1	14.5	13.7	14.6	14	13.3	12.5	14.6	13.9	13.2	9.1	135
140	15.3	14.8	14.4	13.8		14.4	13.9	13.3	12.6	13.4	12.8	12.2	11.4	13.4	12.7	12.1	9.1	140
145	14.1	13.8	13.4	12.8	3	13.2	12.8	12.3	11.7	12.2	11.7	11.2	10.5	12.2	11.6	11	9.1	145
150	13.1	12.8	12.4	12	4.6	12.2	11.8	11.3	10.8	11.1	10.7	10.2	9.6	11.1	10.6	10	8.7	150
155	12.1	11.8	11.4	9.2	6.1	11.2	10.8	10.4	9.9	10.1	9.7	9.3	8.7	10.1	9.7	9.1	7.7	155
160	9.1	6.9	5.3	3.1		10.3	10	9.6	9.2	9.2	8.8	8.4	7.6	9.2	8.8	8.3	6.6	160
165						9.4	9.2	8.9	8.5	8.4	8	7.6	6.5	8.3	7.9	7.5	5.5	165
170						8.7	8.4	7.8	5.8	7.5	7.2	6.9	5.5	7.5	7.2	6.7	4.5	170
175										6.8	6.5	6.2	4.6	6.8	6.4	6.1	3.5	175
180										6.1	5.8	5.6	3.7	6	5.7	5.4	2.7	180
185										5.4	5.2	4.5	2.7	5.4	5.1	4.8		185
190														4.7	4.5	4.2		190
195														4.1	3.9	3.7		195
200														3.3				200

t_242_07110_00_000 / 07210_00_000 / 07310_00_000 / 07410_00_000 / 07510_00_000

Lifting capacities Forces de levage

THK

ft	44 - 197 ft					58 ft					72 ft					86 ft					100 ft					114 ft					ft			
	0.3°	0.7°	1.5°	2.5°	4°	0.3°	0.7°	1.5°	2.5°	4°	0.3°	0.7°	1.5°	2.5°	4°	0.3°	0.7°	1.5°	2.5°	4°	0.3°	0.7°	1.5°	2.5°	4°	0.3°	0.7°	1.5°	2.5°	4°				
36						90.3										84.3															36			
38	74.6					87.7	82.9				84.9					83.1						73.5								38				
40	72.4	65.2				81.5	77.7				80.9	75.5	72.1			78.6	72.3					70.7								40				
45	67.3	60.6				69.9	67.9	65.8	62.1		70.1	67.6	63.2	58		69.5	64.1	61	55.2			66.9	63.9	57.2				59.7		45				
50						60.1	59.1	57.9	55.9	35.7	61.9	60	56.4	52.2	38.8	61.8	59.5	55	49.7	18.4		61.1	55.8	53	47.2	13.6	58.8	55.7	48.9		50			
55						53.2	52.1	50.9	49.5	34.1	54.2	52.7	51	49.1	37.2	54.1	52.3	50.3	45.9	30.2		53.3	51.2	48.9	43.7	13.9	52.9	50	47.5	40.9		55		
60						46.8	46.1	45.3	44.3	31.8	47.8	46.7	45.4	43.8	35.9	47.8	46.3	44.7	42.8	32.3		47	45.3	43.4	41.2	19	47.5	45.8	43.8	40.5	11.4	60		
65											42.6	41.7	40.6	39.4	34.6	42.5	41.3	40	38.4	33.9		42.2	41.1	39.8	38.2	21.6	42.6	41.1	39.3	37.2	11.7	65		
70											38.2	37.5	36.7	35.7	33	38.1	37.1	36	34.7	31.7		39.1	37.9	36.6	35	23.1	38.3	36.9	35.4	33.7	12.1	70		
75											34.4	33.9	33.4	30.4	22.5	34.3	33.5	32.6	31.6	30		35.3	34.3	33.2	31.9	25	34.5	33.3	32	30.5	12.6	75		
80																31.7	31.3	30.8	30	28.7		32	31.2	30.3	29.1	25.7	31.2	30.2	29.1	27.8	13.2	80		
85																29.5	29	28.4	27.7	26.7		29.2	28.5	27.7	26.7	23.6	28.9	28.2	27.4	26.3	14	85		
90																27	24.6	21.5	16.4	9.5		26.7	26.1	25.4	24.6	23.4	27	26.2	25.4	24.4	15.5	90		
95																						24.5	24	23.5	22.8	21.8	24.8	24.1	23.4	22.6	16.9	95		
100																						22.6	22.2	22	21.4	19.7	22.8	22.2	21.6	20.9	17.6	100		
105																											21	20.5	20	19.4	17.1		105	
110																											19.4	19	18.6	18	17.1		110	
115																												17.9	17.6	17.2	16.8	13.3		115

t_242_07120_00_000 / 07220_00_000 / 07320_00_000 / 07420_00_000 / 07520_00_000

ft	128 ft					142 ft					156 ft					171 ft					185 ft					197 ft					ft
	0.3°	0.7°	1.5°	2.5°	4°	0.3°	0.7°	1.5°	2.5°	4°	0.3°	0.7°	1.5°	2.5°	4°	0.3°	0.7°	1.5°	2.5°	4°	0.3°	0.7°	1.5°	2.5°	4°	0.3°	0.7°	1.5°	2.5°	4°	
50	54.2	49.8				47.2																									50
55	51.1	48.9	43.9			46.6	42				41.9																				55
60	46.7	44.6	42.4	37.3	3.3	43.5	41.7	37.6	32.4		41.2	39.6	34.4	27		38.1	35.3				34.8									60	
65	41.7	39.9	38	35.7	3.9	40.4	38.8	36.9	33		38.6	37	34.3	27.4		35.9	34.2	29.4	18.8		32.6			13.2	30.5					65	
70	37.6	36.2	34.5	32.5	5.9	37.4	35.8	34	31.8		35.7	34.2	32	27		33.8	32.3	29.8	18.8		30.5	29.2	26.6	13.2	28.7	27.4	20.6	9.1		70	
75	34.5	33.3	32	30.3	6.4	34.1	32.6	31	29.2		32.8	31.4	29.8	26.4		31.5	30.1	28	18.8		28.6	27.4	25	13.2	27	25.7	20.6	9.1		75	
80	31.7	30.6	29.3	27.8	6.7	30.8	29.5	28.2	26.6		30.2	28.9	27.4	25.3		28.9	27.5	25.9	18.8		26.8	25.6	23.5	13.2	25.3	24.2	20.5	9.1		80	
85	28.8	27.9	26.8	25.5	7	28.5	27.5	26.3	24.9		27.7	26.6	25.2	23.5		26.3	25.1	23.7	18.8		24.7	23.3	21.9	13.2	23.7	22.6	20.2	9.1		85	
90	26.3	25.5	24.5	23.4	7.4	26.2	25.2	24.2	22.9		25.4	24.3	23.2	21.8		24	22.9	21.6	18.7		22.5	21.2	19.9	13.2	21.8	20.6	19.2	9.1		90	
95	24.1	23.4	22.5	21.5	7.9	24	23.1	22.2	21		23.2	22.2	21.2	19.9		22	21	19.8	18.3		20.5	19.4	18.1	13.2	19.9	18.8	17.6	9.1		95	
100	22.3	21.7	21	20.1	8.5	22	21.2	20.4	19.3	2.2	21.1	20.3	19.3	18.1		20.1	19.2	18.1	16.9		18.6	17.6	16.5	13.2	18.1	17.1	16	9.2		100	
105	20.6	20	19.3	18.5	9.5	20.1	19.5	18.7	17.7	2.7	19.2	18.4	17.6	16.5		18.3	17.5	16.5	15.4		17	16	15	13.1	16.5	15.6	14.5	9.3		105	
110	18.9	18.4	17.8	17.1	10.7	18.4	17.8	17.1	16.3	3.5	17.5	16.8	16	15.1		16.6	15.9	15	14		15.4	14.6	13.7	12.5	15	14.1	13.2	9.5		110	
115	17.4	16.9	16.4	15.7	12.3	16.9	16.3	15.7	14.9	4.3	16	15.3	14.6	13.8		15.1	14.4	13.6	12.7		14	13.3	12.4	11.4	13.6	12.8	11.9	9.7		115	
120	16	15.6	15.1	14.6	12.7	15.5	15	14.4	13.7	4.9	14.5	14	13.3	12.6		13.7	13	12.3	11.5		12.7	12	11.2	10.3	12.4	11.6	10.8	9.6		120	
125	14.7	14.3	13.9	13.5	12.8	14.2	13.7	13.2	12.6	5.8	13.2	12.7	12.1	11.5		12.4	11.8	11.2	10.4		11.4	10.8	10.1	9.2	11.2	10.5	9.7	8.8		125	
130	13.5	13.3	13	12.2	7.8	13	12.6	12.2	11.6	7	12	11.6	11.1	10.4		11.2	10.7	10.1	9.4		10.2	9.6	9	8.2	10.1	9.5	8.8	7.9		130	
135						11.9	11.6	11.2	10.7	8.8	11	10.5	10.1	9.5		10.1	9.6	9.1	8.4		9.1	8.6	8	7.3	9.1	8.5	7.8	7		135	
140						10.9	10.6	10.3	9.9	9.2	10	9.6	9.2	8.7		9.1	8.6	8.2	7.6		8.1	7.6	7.1	6.4	8.1	7.5	7	6.2		140	
145						10	9.8	9.5	7.4	3.9	9	8.7	8.3	7.9	3	8.1	7.8	7.3	6.8		7.1	6.7	6.2	5.6	7.1	6.6	6.1	5.5		145	
150											8.2	7.9	7.6	7.2	4.6	7.3	6.9	6.5	6.1		6.3	5.9	5.4	4.9	6.2	5.8	5.3	4.7		150	
155											7.4	7.1	6.9	6.5	5.8	6.5	6.2	5.8	5.4		5.4	5.1	4.7	4.2	5.4	5	4.6	4		155	
160											6.7	6.5	6.3	6.1		5.7	5.5	5.1	4.7		4.7	4.4	4	3.5	4.7	4.3	3.9	3.4		160	
165																5	4.8	4.5	4.2		4	3.7	3.3	2.9	3.9	3.6	3.2	2.7		165	
170																4.4	4.2	4	3.7		3.3	3	2.7	2.3	3.3	3	2.6			170	
175																															175

t_242_07120_00_000 / 07220_00_000 / 07320_00_000 / 07420_00_000 / 07520_00_000

Remarks referring to load charts

1. The lifting capacities do not exceed 75 % of the tipping load according to ASME B 30.5.
The crane's structural steelwork is in accordance with EN 13000 and ASME B 30.5.
2. For the calculation of the load charts at least a wind speed of 30 ft/s (9 m/s, 20.1 mph) and regarding the load a sail area of 1 m² per ton load and a wind resistance coefficient of 1.2 on the load have been taken into account. For lifting of loads with large sail areas and/or high wind resistance coefficients the maximum wind speed as stated in the load charts has to be reduced.
3. Lifting capacities are given in kips.
4. The weight of the hook blocks and hooks is part of the load and therefore it must be deducted from the lifting capacities.
5. Working radii are measured from the slewing centre.
6. The lifting capacities given for the telescopic boom apply if the folding jib is removed.
7. Lifting capacities above 295400 lbs/332900 lbs only with additional pulley block/special equipment.
8. Lateral inclination $\pm 0.3^\circ$.
9. The data of this brochure serves only for general information. All information is provided without warranty. Instructions for the correct commissioning of the crane please take from the operation manual and the load chart book.

Remarques relatives aux tableaux des charges

1. La capacité de charge ne doit pas dépasser 75 % de la charge de basculement conformément à ASME B 30.5.
La structure métallique de la grue est conforme à EN 13000 et ASME B 30.5.
2. Une vitesse de vent de 30 ft/s (9 m/s, 20.1 mph) minimum, une surface de prise au vent de 1 m² par tonne ainsi qu'un coefficient de résistance au vent de la charge 1,2 sont pris en compte pour le calcul des tableaux de charge. Lorsque des charges ayant une surface de prise au vent et/ou un coefficient de résistance au vent plus élevé(e)(s) sont levées, la vitesse de vent maximale indiquée dans les tableaux de charge doit être réduite.
3. Les charges sont indiquées en kips.
4. Le poids du crochet de levage resp. de la moufle à crochet est une partie de la charge et doit donc être déduit de la capacité de charge.
5. Les portées sont calculées à partir de l'axe de rotation.
6. Les charges indiquées pour la flèche télescopique sont valables lorsque la fléchette pliante est démontée.
7. Les charges supérieures à 295400 lbs/332900 lbs seulement avec moufle additionnel/équipement supplémentaire.
8. Inclinaison latérale $\pm 0,3^\circ$.
9. Les données de cette brochure sont données à titre informatif. Ces renseignements sont sans garantie. Les consignes relatives à la bonne mise en service de la grue sont disponibles dans le manuel d'utilisation et le manuel de tableaux de charge.