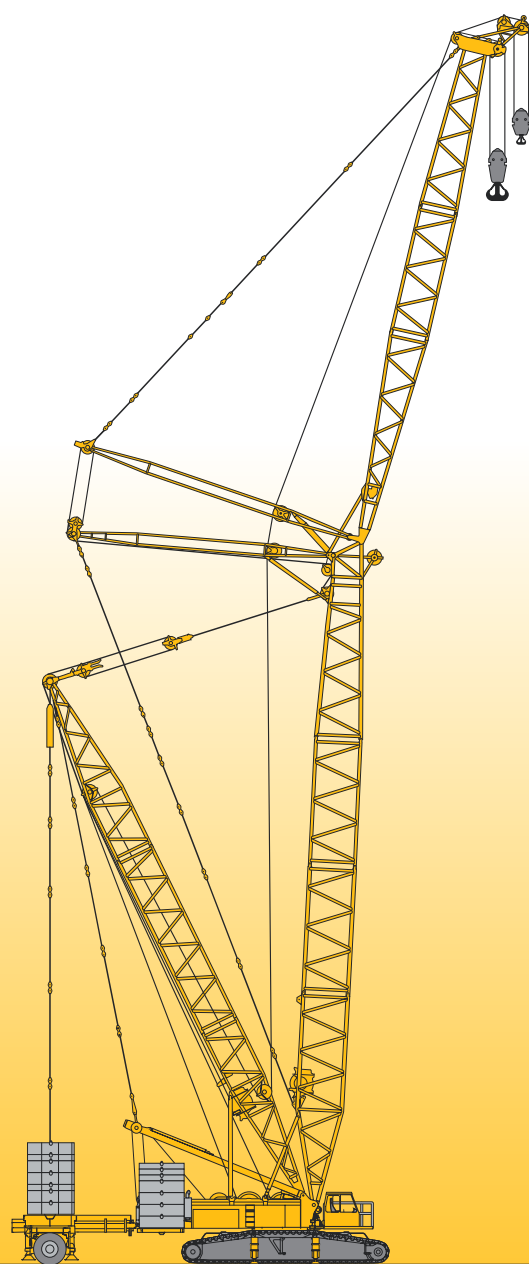


Crawler Crane Grue sur chenilles

LR 1350/1

Technical Data Caractéristiques techniques



LIEBHERR

Table of content

Tables des matières

Table of content

Technical description, crawler track chassis, crane superstructure and optional features	4
Dimensions and working speeds	6 – 11
Hook blocks and hooks, reeving chart	12
Transportation plan	13 – 15
Boom/jib combinations	16 – 17
Lifting capacities and heights on SL/SLD/SLDB/BW boom/derrick combination	18 – 23
Lifting capacities and heights on S/SD/SDB/BW boom/derrick combination	24 – 29
Lifting capacities and heights on SLF boom/jib combination	30 – 35
Lifting capacities and heights on SDWB/BW boom/jib combination	36 – 41
Lifting capacities and heights on SW/SWF boom/jib combination	42 – 52

Tables des matières

Description technique, châssis à chenilles, partie tournante et les équipements complémentaires	5
Les dimensions et les vitesses	6 – 11
Organes de préhension et tableau de mouflage	12
Plan de transport	13 – 15
Les configurations de flèche	16 – 17
Les forces de levage et hauteurs de levage à la flèche principale SL/SLD/SLDB/BW	18 – 23
Les forces de levage et hauteurs de levage en configuration S/SD/SDB/BW	24 – 29
Les forces de levage et hauteurs de levage en configuration SLF	30 – 35
Les forces de levage et hauteurs de levage en configuration SDWB/BW	36 – 41
Les forces de levage et hauteurs de levage en configuration SW/SWF	42 – 52

Technical description

Description techniques

Crawler travel gear

Frame	Self-manufactured, torsion-resistant box-type design of high-tensile grain refined structural steel, comprising crawler centre section and two crawler carriers. The crawler carriers are pinned hydraulically.
Travel gear	Maintenance-free, dirt-protected crawler travel gear with 3'3" (3'11" optional) track pads and centralized lubrication system for tumbler and track roller bearings.
Travel drive	1 (optionally 2) hydraulic travel drives per crawler carrier, comprising axial piston variable displacement motor, planetary gear with spring-loaded, hydraulically releasable travel brake and tumbler. The crawler chains are controllable synchronously, independently and opposed to one another.
Central ballast	17640 lbs, consisting of 2 slabs 8820 lbs each.

Crane superstructure

Frame	Torsion-resistant weldment of high-tensile grain refined structural steel. Connected to crawler travel gear by a 3-row roller slewing rim for 360° continuous rotation.
Crane engine	6-cylinder turbo-charged Liebherr Diesel engine, type D 926 TI-E A4, water-cooled, output acc. to DIN 270 kW (367 h.p.) at 1900 rpm, max. torque 1580 Nm at 1200 – 1600 rpm. The engine corresponds to the EU directive 97/68/EG step II and is certified acc. to EPA/CARB and Tier 2. Fuel reservoir 185 gallons.
Crane drive	Diesel-hydraulic by pump distribution gear with 6 axial piston variable displacement pumps with capacity control within closed oil circuits.
Crane control	Servo-control with electronic synchronizing device by three four-way control levers and two two-way control levers (joy-stick type). Continuous control of the crane motions by variation of the hydraulic pumps, additionally by variation of the Diesel engine speed.
Winches	Hydraulically driven cable drums by axial piston variable displacement motor and planetary gear with spring-loaded, hydraulically releasable static brake. Wearfree braking function during lowering by closed oil circuits. Winch 1 – hoist gear, winch 4 – derrick gear. Additional auxiliary winch for reeving of cables.
Slewing gear	2 slewing gears (3 resp. 5 optional), hydraulic control by axial piston fixed displacement motors and planetary gear with spring-loaded, hydraulically releasable static brake. Wearfree braking function by closed oil circuits.
Crane cabin	Spacious, all-steel construction cabin, swivelling sideways and tiltable backwards, with operating and control instruments. Self-contained warm-water heating/air-conditioning system (optionally).
Safety devices	LICCON safe load indicator, hoist limit switches, electronic inclinometer, safety valves for the prevention of pipe and hose ruptures.
Electrical system	Data bus technique, 24 V DC, 2 batteries 170 Ah each.
Counterweight on superstructure	187425 lbs, consisting of 1 slab of 33075 lbs each, 2 slabs of 11025 lbs each and 6 slabs of 22050 lbs each.

The boom systems

Main boom SL	SL 92 – 394 ft (SL 354 – 394 ft exclusively with derrick boom), system 2821.10 / 2417.10, Base section 33 ft, intermediate sections 23 and 46 ft, reduction section 20 ft, 441 kips head section 26 ft.
Main boom S	S 59 – 354 ft (S 335 – S 354 ft exclusively with derrick boom), system 2821.10, Base section 33 ft, intermediate sections 23 ft and 46 ft, head adapter 25 ft, 661 kips head section 2 ft.
Derricking boom D	D 89 ft, system 2521.10, Base section 30 ft, intermediate section 30 ft, head section 30 ft.
Luffing fly jib W	W 78 – W 300 ft, system 2417.10, Assembly unit with A-frame I / II and base section 33 ft, intermediate sections 23 and 46 ft, 441 kips head section 26 ft.
Fixed lattice jib F	F 39 – 118 ft, system 1109.10, Base section 20 ft, intermediate sections 20 and 39 ft, 132 kips head section 20 ft, A-frame.
Suspended ballast B	Suspended ballast palette with compensating ram, radius adjustment by derrick boom, max. 441 kips derrick boom ballast at max. 49 ft counter-radius.
Ballast trailer BW	Ballast trailer with compensating ram and hydraulically telescopic guide system, max. 441 kips derrick boom ballast at max. 49 ft counter-radius.

Optional equipment

Winches 2, 3 and 5	Winch 2 – hoist gear, winch 3 – derricking main boom/D-operation, winch 5 – derricking luffing fly jib.
Ballast	Central ballast 83752 lbs, additionally 4 slabs of 16538 lbs each. Superstructure ballast 275525 lbs, additionally 4 slabs of 11025 lbs each and 2 slabs of 22050 lbs each. Suspended ballast B 429900 lbs – 7 slabs of 11025 lbs each and 16 slabs of 22050 lbs for a total of 441000 lbs derrick ballast. Ballast trailer BW 396832 lbs – 8 slabs of 11025 lbs and 14 slabs of 22050 lbs for a total of 441000 lbs derrick ballast.
Additional Mechanical supports	For the erection of longer boom combinations without derrick ballast.
Hydraulic mounting supports	For raising the basic machine during assembly/disassembly.
Hydraulic mounting ram	For the self-erection of the basic machine and winches.
Hydraulic ballasting device	For lifting/depositing the counterweight of the superstructure.
Quick Connection	Rapid coupling system to facilitate separation of the superstructure from the crawler travel gear.
Whip line	Whip line 70550 lbs (52920 lbs), to be fitted to the S-, SL- and W-head.

Further equipment items on request.

Technical description Description techniques

Train de chenilles

Châssis	Fabrication Liebherr, construction en caisson indéformable, en acier à grain fin à haute résistance. Constitué d'une partie centrale et de deux supports de chenilles. Les supports de chenilles sont montés hydrauliquement.
Train de chenilles	Train de chenilles ne nécessitant pas d'entretien et protégé contre les impuretés, équipé de tuiles de 3'3" de large (3'11" en option) et d'un dispositif de graissage centralisé pour les paliers des barbotins et des galets de roulement.
Transmission	1 transmission hydraulique (2 en option) par support de chenilles, comprenant chacune un moteur à pistons axiaux à cylindrée variable, un train planétaire avec frein à ressort et purge hydraulique et des barbotins. Les chaînes peuvent être commandées synchroniquement, indépendamment l'une de l'autre et en sens inverse l'une par rapport à l'autre.
Contrepoids central	17640 lbs, comprenant 2 plaques de 8820 lbs.

Partie tournante

Châssis	Construction soudée indéformable, en acier grain fin à haute résistance. Liaison par couronne d'orientation à triple rangée de rouleaux, orientation illimitée à 360°.
Moteur de la grue	Moteur diesel Liebherr, 6 cylindres, Type D 926 TI-E A4, refroidissement par eau, puissance selon DIN 270 kW (367 PS) à 1900 rpm, couple max. 1580 Nm à 1200 – 1600 rpm. Le moteur correspond à la directive EU 97/68/EG stage II et est certifié selon EPA/CARB et Tier 2. Capacité du réservoir de carburant: 185 gallons.
Entraînement de grue	Entraînement Diesel hydraulique via un mécanisme de distribution de pompes avec 6 pompes à débit variable à pistons axiaux, avec réglage de la puissance en circuits hydrauliques fermés.
Commande de la grue	Servo-commande avec dispositif de synchronisation électronique, via 4 manipulateurs en croix et 3 manipulateurs à deux positions. Commande des mouvements de la grue en continu, par régulation du débit des pompes et du régime du moteur Diesel.
Treuil	Tambour de câble à entraînement hydraulique, via un moteur à pistons axiaux à cylindrée variable, un train planétaire avec frein à ressort piloté hydrauliquement. Frein quasi-inusable via des circuits hydrauliques fermés pour les mouvements de descente. Treuil 1 – Treuil de levage, Treuil 4 – Mécanisme de relevage. Supplémentaire treuil auxiliaire pour le mouflage des câbles.
Mécanisme d'orientation	2 mécanismes d'orientation (3 resp. 5 en option), à entraînement hydraulique via un moteur à pistons axiaux et un train planétaire avec frein à ressort et piloté hydrauliquement. Frein quasi-inusable via des circuits hydrauliques fermés.
Cabine du grutier	Cabine spacieuse en tôle d'acier galvanisée, pivotable latéralement et inclinable vers l'arrière, dotée de tous les éléments de contrôle et de commande et d'un système de chauffage par eau chaude indépendant du moteur, climatisation (en option).
Dispositifs de sécurité	Contrôleur de charges »LICCON«, fin de course de levage, affichage électronique de l'inclinaison, clapets de sécurité contre la rupture de tuyaux et flexibles, anémomètre.

Installation électrique	Technologie de bus de données, 24 V en continu, 2 batteries de 170 Ah chacune.
Contrepoids de la	187425 lbs, comprenant 1 plaque de base de 33075 lbs, 2 plaques de 11025 lbs et 6 plaques de 22050 lbs.

Les systèmes de flèches

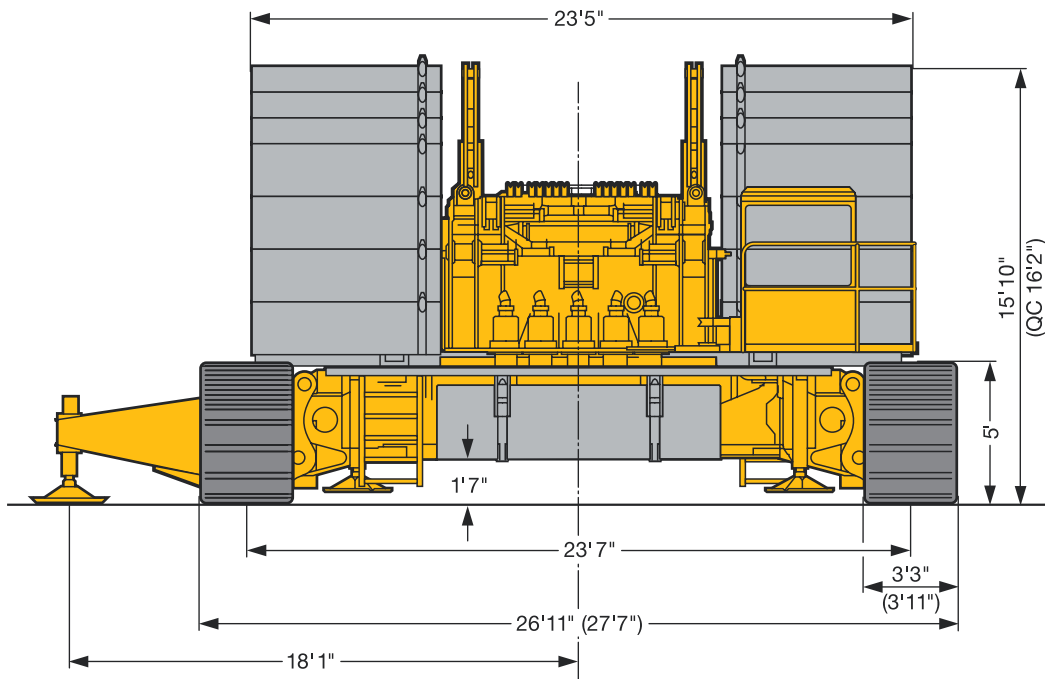
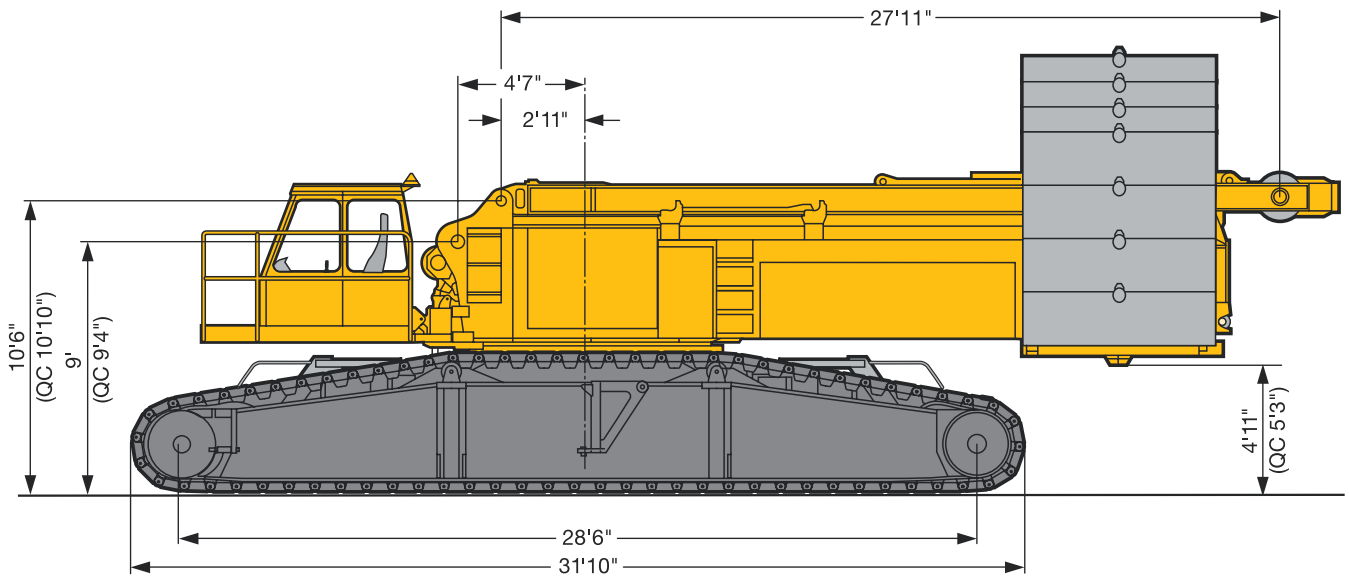
Flèche principale SL	SL 92 – 394 ft (SL 354 – 394 ft uniquement avec Derrick), système 2821.10 / 2417.10, Élément de base de 10 m, élément intermédiaire de 23 et 46 ft élément de réduction de 20 ft, élément de tête 441 kips de 26 ft.
Flèche principale S	S 59 – 354 ft (S 335 – S 354 ft uniquement avec Derrick), système 2821.10, Élément de base de 33 ft, élément intermédiaire de 23 ft et 46 ft, élément adaptateur de tête de 25 ft, élément de tête 661 kips de 2 ft.
Flèche Derrick D	D 89 ft, système 2521.10, Élément de base de 30 ft, élément intermédiaire de 30 ft, élément de tête de 30 ft.
Fléchette à treillis à volée variable W	W 78 – W 300 ft, système 2417.10, Unité de montage avec chevalet A I / II et élément de base de 33 ft, élément intermédiaire de 23 et 46 ft, élément de tête 441 kips de 26 ft.
Fléchette à treillis fixe F	F 39 – 118 ft, système 1109.10, Élément de base de 20 ft, élément intermédiaire de 20 et 39 ft, élément de tête 132 kips de 20 ft, chevalet A.
Contrepoids suspendu B	Palette de contrepoids suspendu avec vérin de guidage, réglage du rayon avec la flèche Derrick. Contrepoids Derrick de 441 kips max. pour une contreportée max. de 49 ft.
Remorque à contrepoids BW	Remorque à contrepoids avec vérin de guidage et système de guidage télescopable hydrauliquement. Contrepoids Derrick de 441 kips max. pour une contreportée max. de 49 ft.

Equipement additionnel

Treuil 2, 3 et 5	Treuil 2 – Treuil de levage, treuil 3 – treuil de manoeuvre de la flèche principale/Fonctionnement D. Treuil 5 – treuil de manoeuvre de la fléchette treillis à volée variable.
Contrepoids	Contrepoids central de 83752 lbs et 4 plaques de 16538 lbs. Contrepoids de la partie tournante de 275525 lbs et 4 plaques de 11025 lbs et 2 plaques de 22050 lbs. Contrepoids suspendu B de 429900 lbs – 7 plaques de 11025 lbs et 16 plaques de 22050 lbs pour un contrepoids Derrick total de 200 t. Chariot support de contrepoids BW de 396832 lbs – 8 plaques de 11025 lbs et 14 plaques de 22050 lbs pour un contrepoids Derrick total de 441000 lbs.
Stabilisateurs mécaniques supplémentaires	Pour le relevage des combinaisons de flèches longues sans contrepoids Derrick.
Stabilisateurs de montage hydrauliques	Pour le levage de la machine de base lors du montage / démontage.
Vérin de montage hydraulique	Pour le montage autonome de la machine de base et des treuils.
Dispositif de lestage hydraulique	Pour lever/déposer le contrepoids de la tourelle.
Raccord rapide	Raccord rapide permettant de désolidariser facilement la partie tournante du train de chenilles.
Poulie brin simple	Poulie brin simple de 70550 lbs (52920 lbs), pour le montage sur la tête de la flèche S-, SL- et fléchette W.

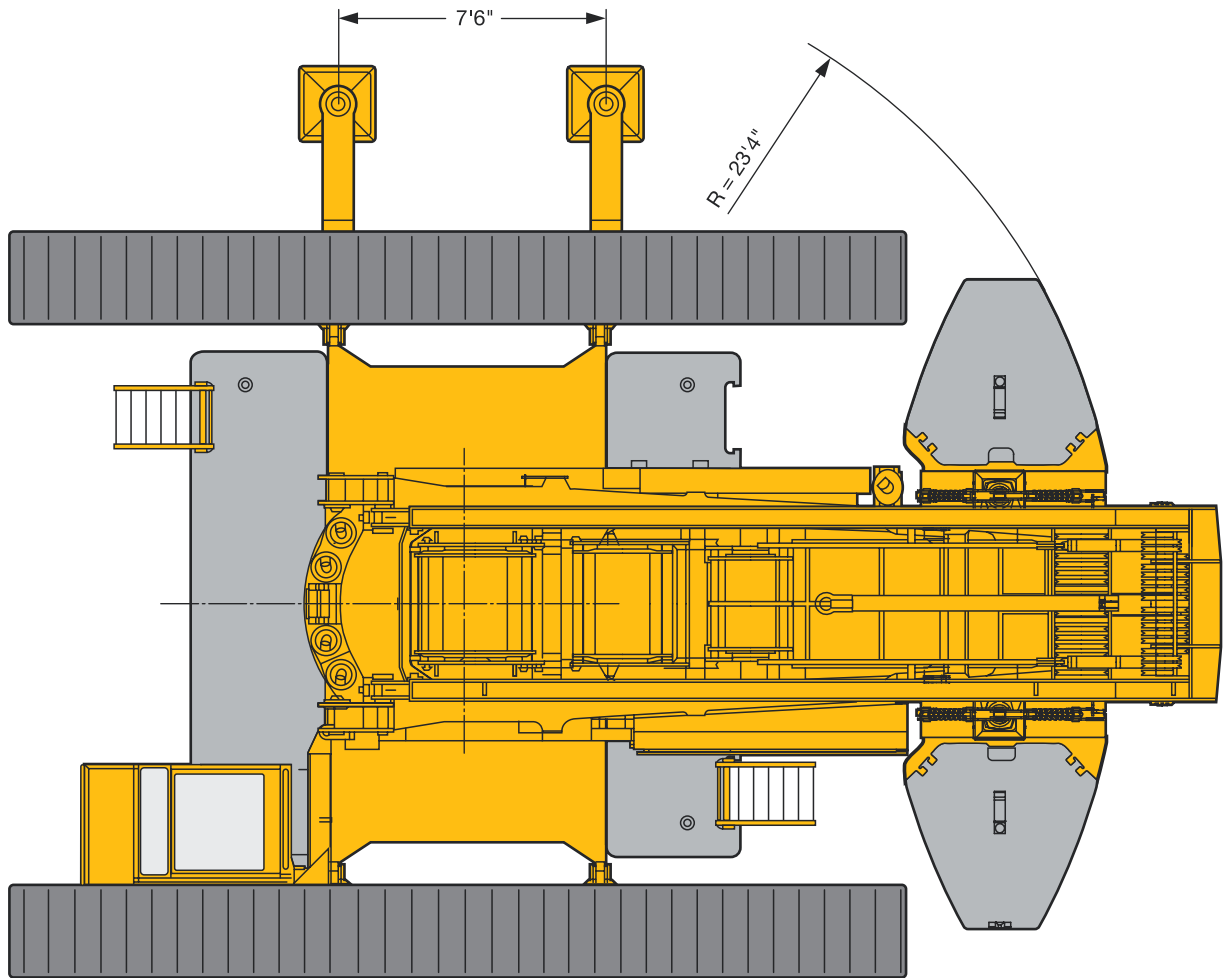
Autres équipements additionnels à la demande.

Dimensions Encombrement



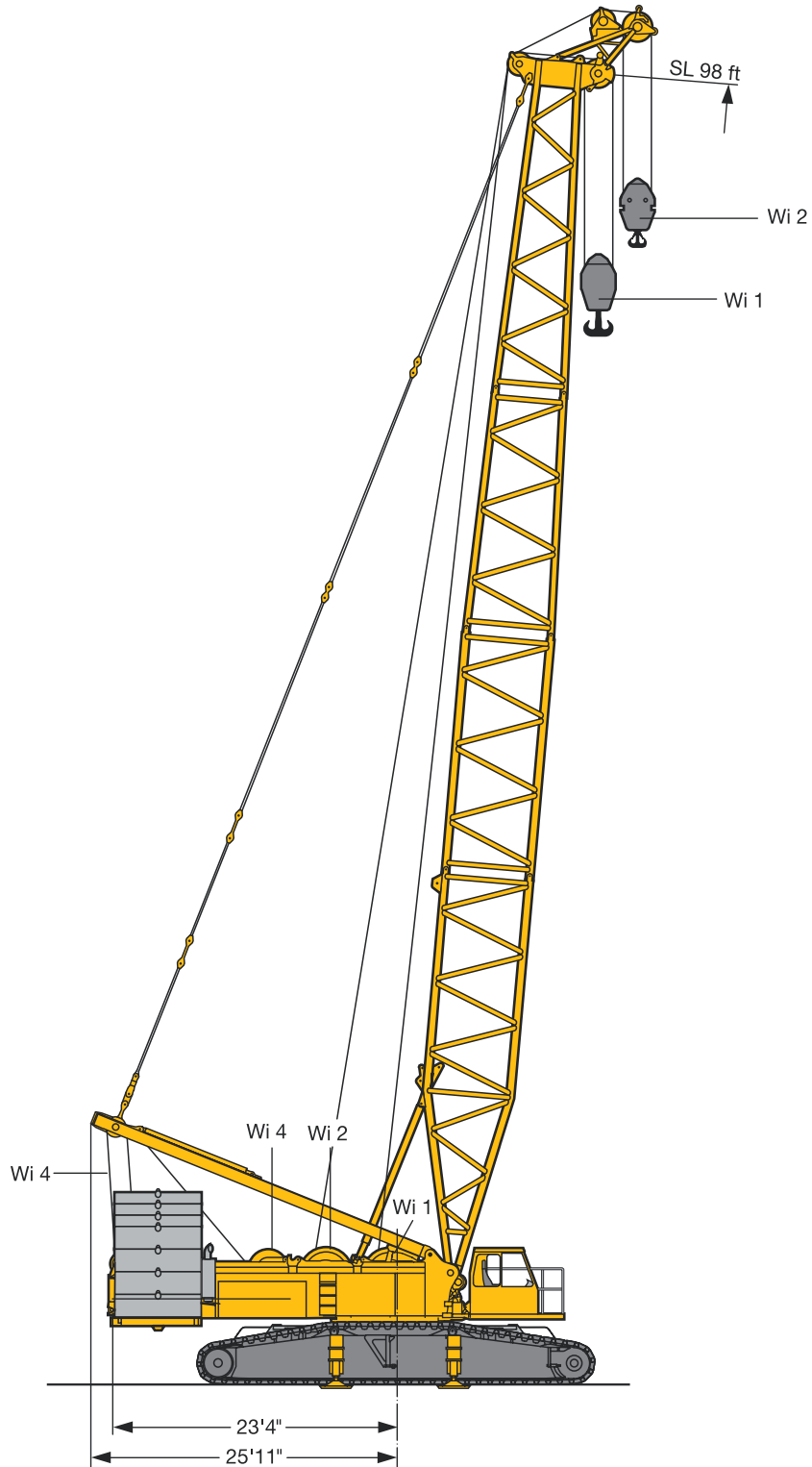
S1486

Dimensions Encombremment



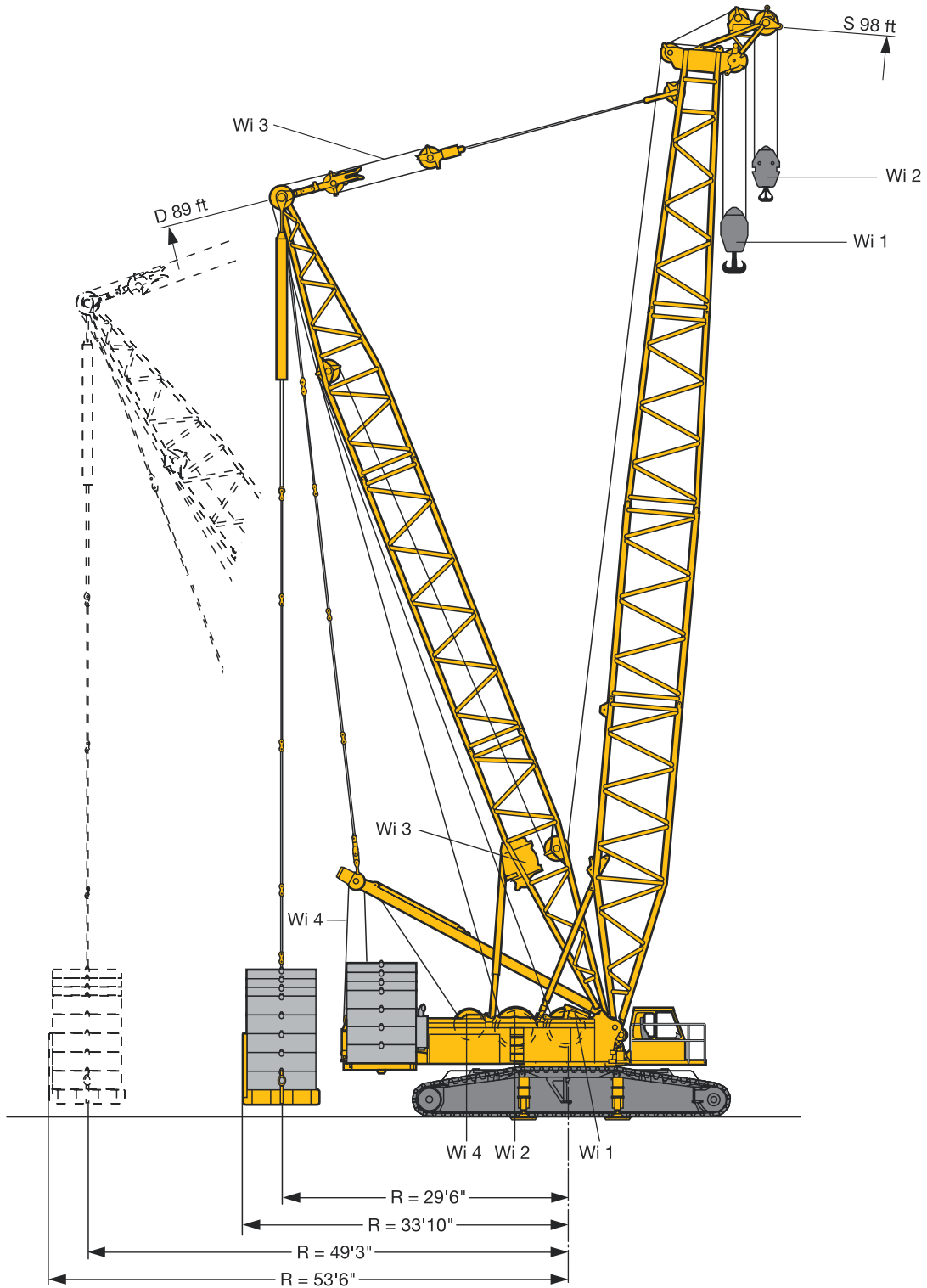
S1487

Dimensions Encombrement



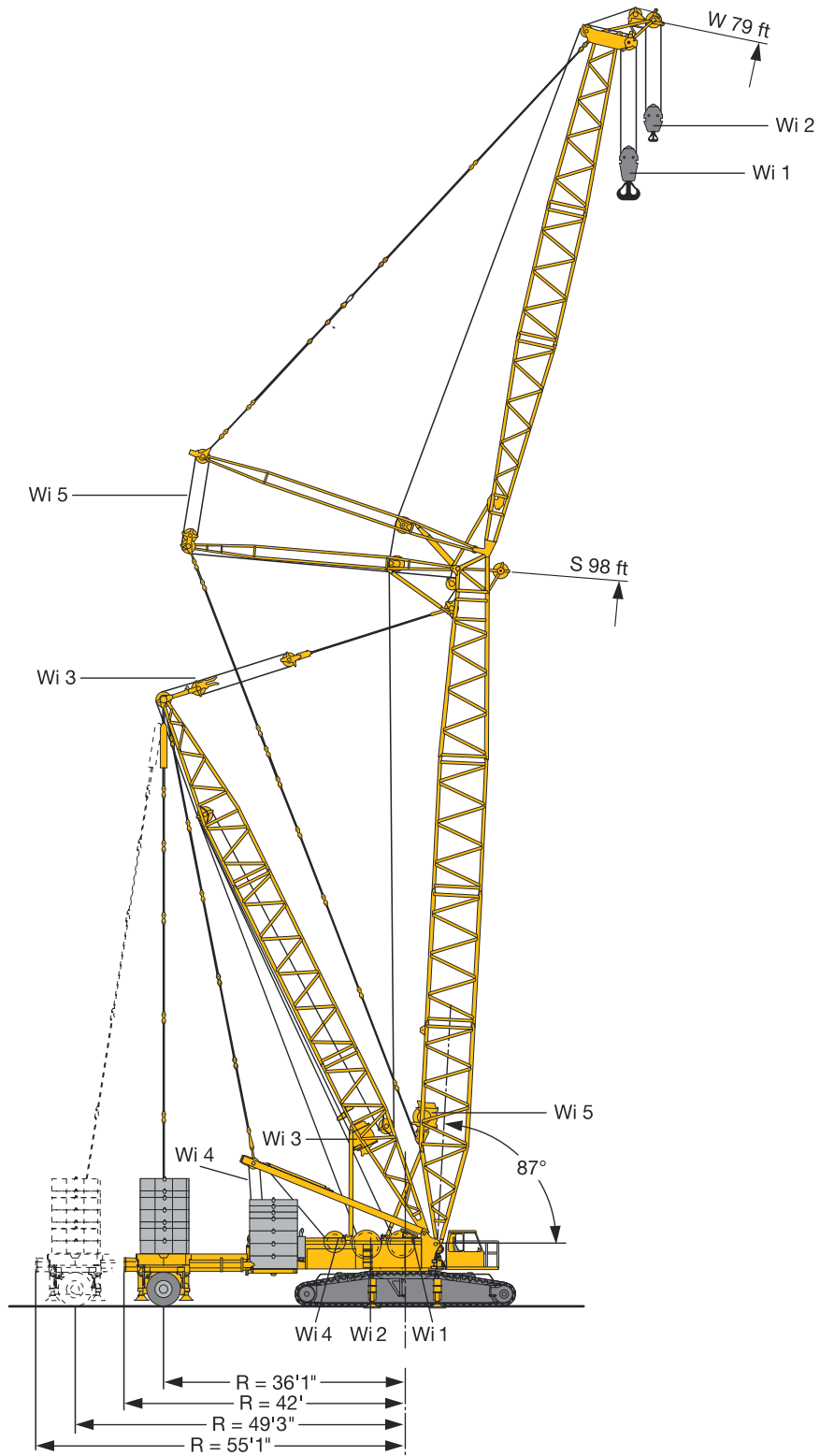
S1488

Dimensions Encombrement



S1489

Dimensions Encombrement



S1490

Working speeds Vitesses



	Total driving force with one drive per crawler carrier Puissance propulsive totale avec un entraînement par porteur-chenille	343957 lbs
	Total driving force with two drives per crawler carrier Puissance propulsive totale avec deux entraînements par porteur-chenille	687915 lbs
	Total weight with main boom S 59 ft, 187425 lbs counterweight, 8 t central ballast and 235890 lbs hook block Poids total avec flèche principale S 59 ft, contrepoids de 187425 lbs, lest central de 8 t et moufle de 235890 lbs	441000 lbs
	Average ground pressure at 441000 lbs total weight and 3'34" track pads Pression moyenne au sol à 441000 lbs de poids total et pains de chenille de 3'34"	11.3 N/cm ²
		0 – 1.01

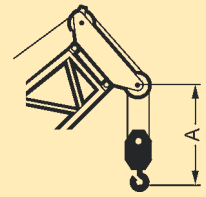


Drive Mécanismes	Mode Mode	Speeds Vitesses ft/min	Max. single line pull Effort au brin maxi. lbs	Rope diameter Diamètre du câble inch	Rope length Longueur du câble ft
	Hoist gear Mécanisme de levage	0 – 524	36000	1.10"	3280
	Hoist gear Mécanisme de levage	0 – 524	28325	1"	1968
	Derricking main boom/ D-operation Relevage mât principale/ en version D	0 – 524	29225	1"	2788
	Derrick main boom Relevage mât principale	2 x 0 – 262	2 x 24785	0.9"	1788
	Derricking luffing fly jib Relevage volée variable	0 – 524	29225	1"	2132
	0 – 84°	approx. 2 min. for boom length 335 ft env. 2 min. pour longueur de flèche de 335 ft			
		0 – 1,85 rpm			

Hooks blocks and hooks Organes de préhension



Load (kips) Forces de levage (kips)		No. of sheaves Poulies	No. of lines Brins	Weight (lbs) Poids (lbs)	Dimension A (ft) Dimension A (ft)
*	**				
661	520	11	22	10141/12346/14550/16755	16.4
474	373	7	15	7055/9259/11464	16.4
236	185	3	7	3307/5512/7716	15.1
104	82	1	3	2205/4409	14.8
35	26	-	1	2425	14.4



* winch / treuil 1 (1.1") / ** winch / treuil 2 (1")

Reeving chart, Rope Ø 1.1" Tableau de mouflage Ø 1.1"

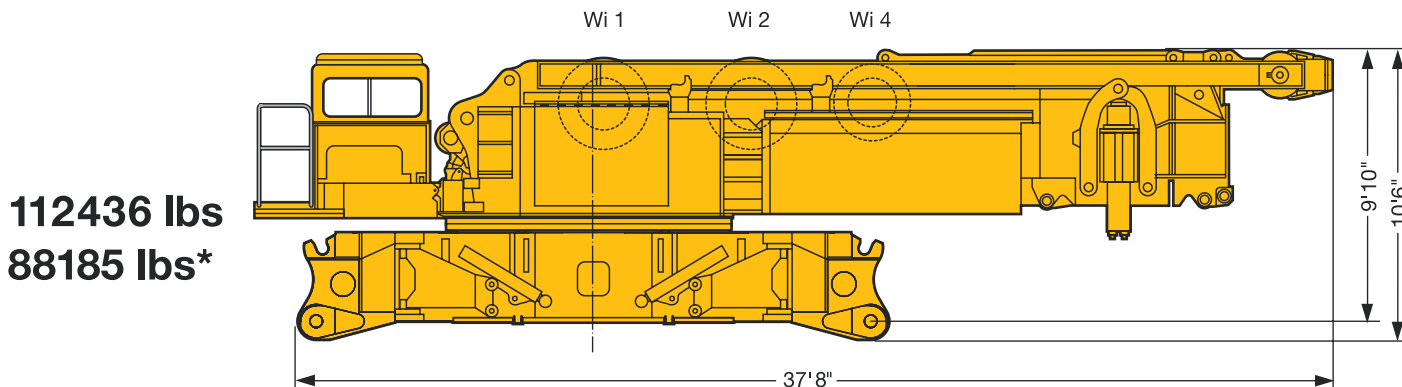
No. of lines Brins	1	2	3	4	5	6	7	8	9	10	11	12	13	14	15	16	17	18	19	20	21	22
Max. capacity kips Capacité maxi. kips	35	68	104	137	172	203	236	269	300	331	362	390	421	450	478	507	534	562	589	615	642	661
35																						
104																						
236																						
474																						
661																						

Reeving chart, Rope Ø 1" Tableau de mouflage Ø 1"

No. of lines Brins	1	2	3	4	5	6	7	8	9	10	11	12	13	14	15	16	17	18	19	20	21	22
Max. capacity kips Capacité maxi. kips	26	53	82	108	132	159	185	209	234	258	282	304	328	351	373	395	417	439	459	481	500	520
26																						
82																						
185																						
373																						
520																						

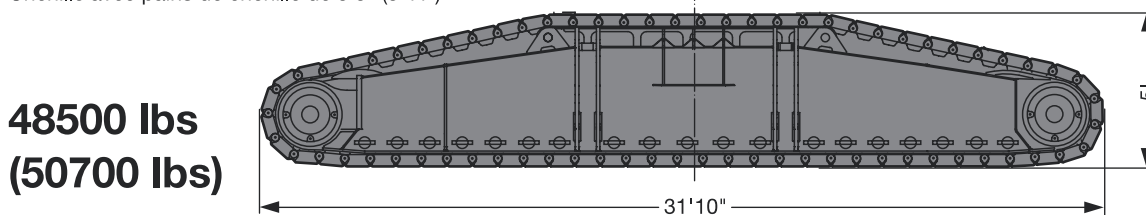
Transportation plan Plan de transport

Superstructure with winch 1,2 and 4 and crawler center section, assembly jacks and ballasting device
Partie tournante avec treuil 1,2 et 4 et partie centrale du porteur, vérins de montage et dispositif de lestage



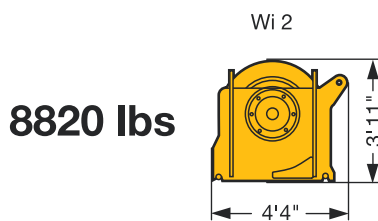
* without winch 1 and 2, without ballasting device
sans treuil 1 et 2, sans dispositif de lestage

Crawler with track pads 3'3" (3'11")
Chenille avec pains de chenille de 3'3" (3'11")



Winch 1 incl. rops
Treuil 1 incl. câble

Winch 2 incl. rops
Treuil 2 incl. câble



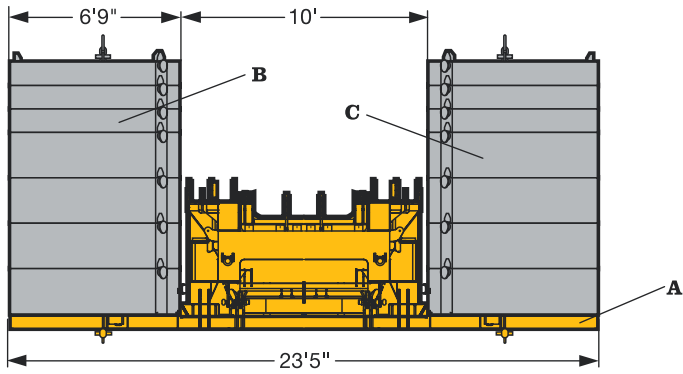
Wi = winch/treuil

S1491

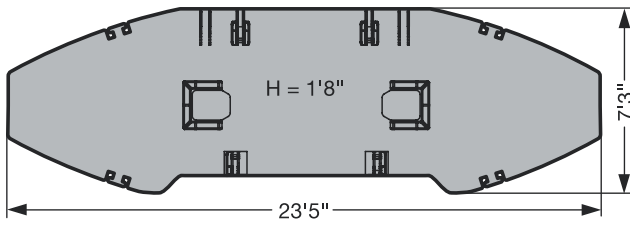
Transportation plan Plan de transport

Counterweight versions
Variantes de contrepoids

CWT at superstructure
Contrepoids tourelle

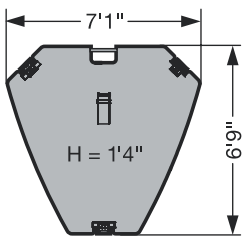


Part A



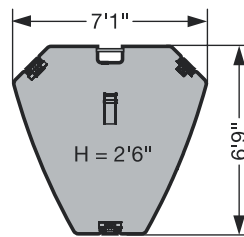
33075 lbs

Part B



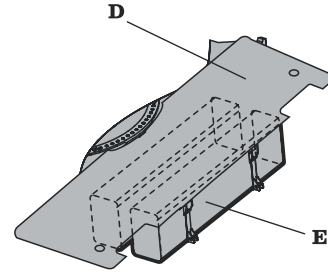
11025 lbs

Part C

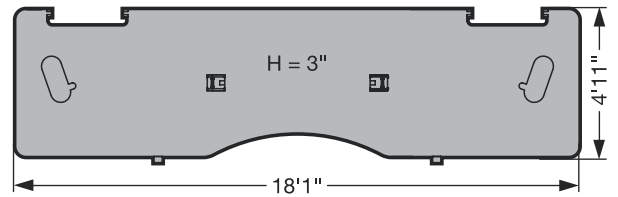


22050 lbs

Central CWT
Lest central

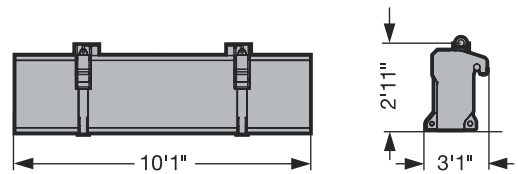


Part D



8820 lbs

Part E



16538 lbs

	Part A 33075 lbs	Part B 11025 lbs	Part C 22050 lbs
187425 lbs	1 x	2 x	6 x
231425 lbs	1 x	6 x	6 x
275525 lbs	1 x	6 x	8 x

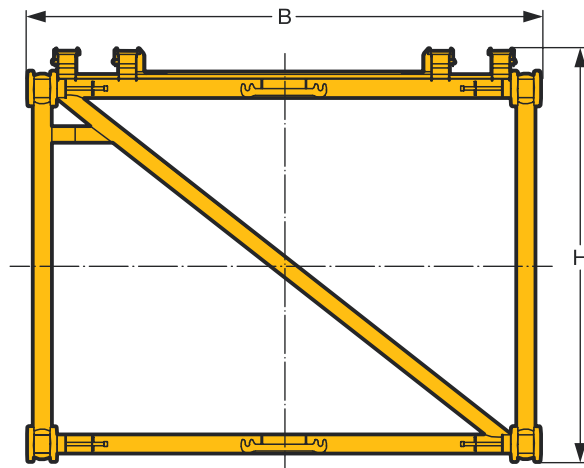
	Part D 8820 lbs	Part E 16538 lbs
17640 lbs	2 x	-
83752 lbs	2 x	4 x

S1492

Transportation plan Plan de transport

Boom intermediate sections Eléments de flèches intermédiaires	B x H	Base length Longueur de base	Transport length Longueur de transport	Weight* Poids*
S 2821.10	9'10" x 7'10"	19'8"	20'8"	4410 lbs
		39'4"	40'4"	7716 lbs
LI 2417.10	8'6" x 6'7"	19'8"	20'6"	3090 lbs
		39'4"	40'4"	5600 lbs
F 1109.10	36'9" x 3'3"	19'8"	20'4"	1550 lbs
		39'4"	40'4"	2870 lbs
D 2417.20	8'6" x 7'10"	29'6"	30'6"	7495 lbs

* Weights incl. guy rods and bolts / Poids avec barres de haubannage et boulons



Boom/jib combinations Configurations de flèche

S Main boom, heavy
Flèche principale, lourde

L Main boom, light
Flèche principale, légère


W Luffing jib, heavy
Fléchette, lourde


D Derrick
Flèche derrick

B Suspended ballast
Lest suspendu

BW Ballast trailer
Porteur de lest

F Lattice fly jib
Fléchette treillis fixe

 661 Kips S-Head / S-Tête

 440 Kips L-Head / L-Tête

 132 Kips F-Head / F-Tête



SL

SL 79 ft – 335 ft

SLD, SLDB/BW

SL 98 ft – 394 ft
D 89 ft

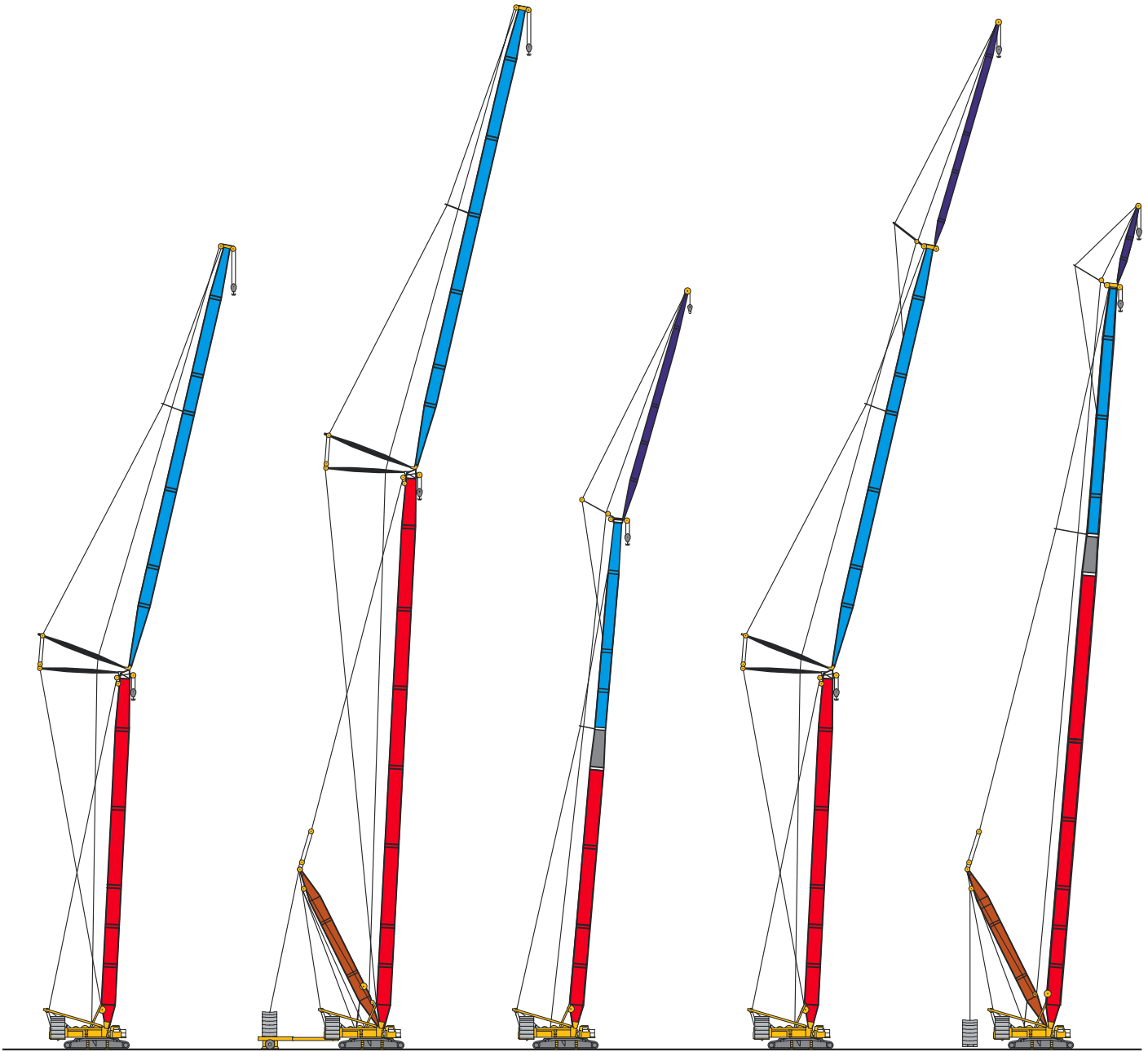
S

S 59 ft – 315 ft

SD, SDB/BW

S 98 ft – 354 ft
D 89 ft

Boom/jib combinations
Configurations de flèche



SW

S 79 ft – 197 ft
 W 79 ft – 295 ft

SWB/BW

S 98 ft – 276 ft
 W 79 ft – 295 ft
 D 89 ft

SLF

SL 118 ft – 315 ft
 F 39 ft – 118 ft

SWF

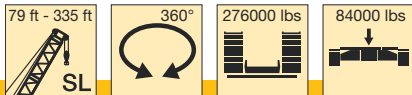
S 157 ft – 187 ft
 W 138 ft – 256 ft
 F 39 ft – 118 ft

SLDFB/BW

on request
 sur demand

Lifting capacities on SL boom

Forces de levage à la flèche principale SL

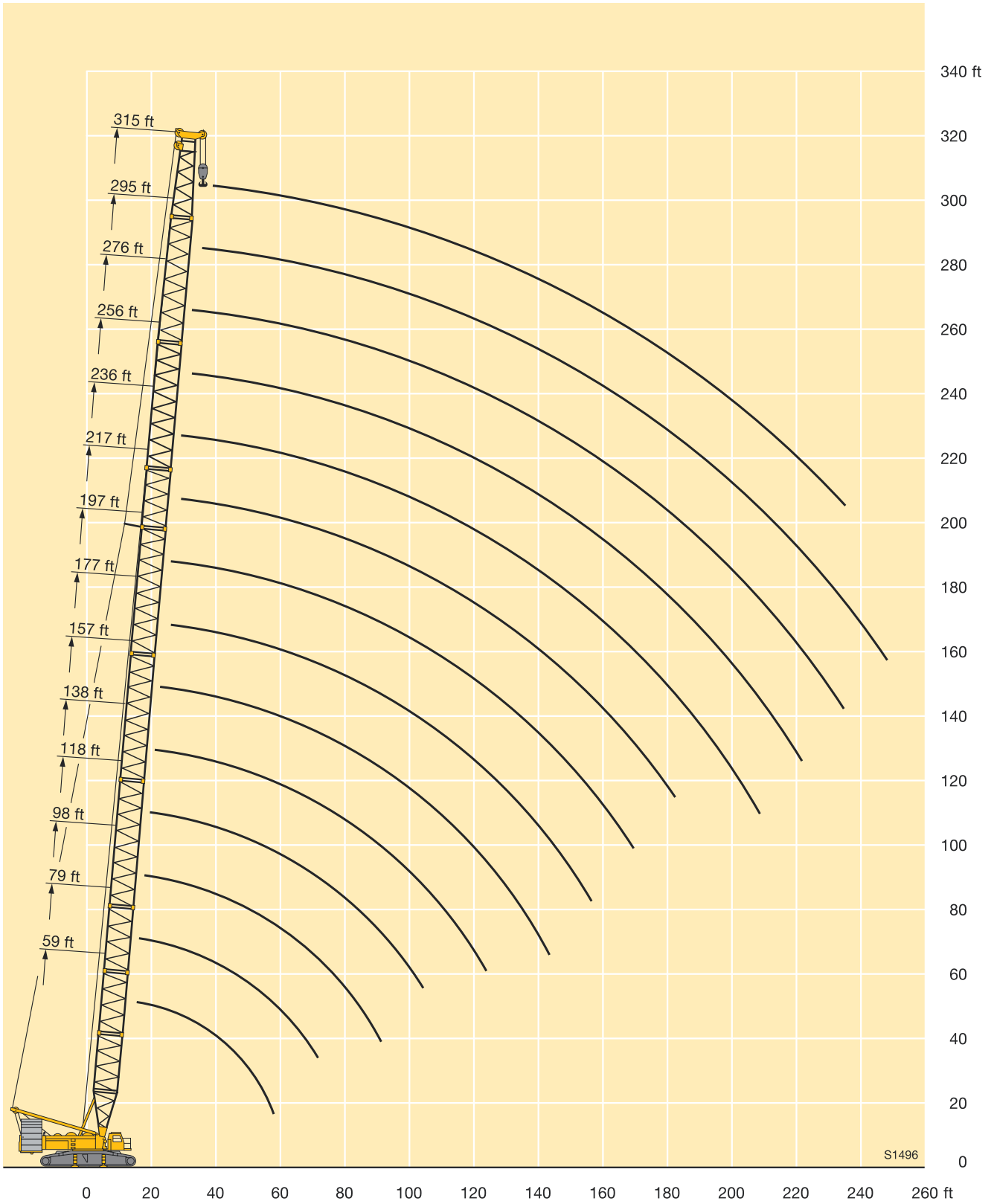


ft	79 ft	98 ft	118 ft	138 ft	157 ft	177 ft	197 ft	217 ft	236 ft	256 ft	276 ft	295 ft	315 ft	335 ft	ft
16	441														16
17	441														17
18	441	441													18
19	441	441													19
20	441	441	441												20
21	441	441	441	441											21
22	441	441	441	440											22
23	441	441	441	438	419										23
24	441	441	440	429	408										24
26	441	441	439	411	386	363	318								26
28	441	425	410	383	360	347	315								28
30	433	404	378	355	361	330	311	267	253						30
32	400	375	352	363	344	315	308	262	248	212	184				32
34	369	349	329	350	327	300	298	257	243	210	182				34
36	337	326	308	329	310	285	285	253	239	207	179	168	151		36
38	312	306	290	311	294	271	271	249	235	204	177	166	149		38
40	288	288	310	294	279	259	257	243	229	201	174	164	147	137	40
45	243	264	271	259	245	230	229	220	210	195	167	159	143	133	45
50	209	236	235	230	217	203	206	198	190	182	160	155	139	130	50
55	183	206	206	204	196	181	186	180	173	168	153	150	134	127	55
60	162	183	182	181	179	163	169	164	157	153	145	143	130	124	60
65	145	164	163	162	161	151	155	150	145	141	136	131	124	121	65
70	132	149	148	146	146	140	143	139	133	130	126	121	117	113	70
75		136	135	133	133	130	131	128	124	120	116	112	109	105	75
80		125	124	122	121	120	120	119	115	112	108	104	101	97	80
85		115	114	112	112	110	110	110	107	104	101	97.5	94.5	90.5	85
90		107	106	104	103	102	102	101	100	97.5	94.5	91	88.5	84.5	90
95			98.5	97	96	95	94.5	94	93	91.5	88.5	85	82.5	79	95
100			92	90.5	89.5	88.5	88	87.5	86	85.5	83	80	77.5	74	100
105				84.5	83.5	82.5	82	81.5	80	80	78	75	72.5	69.5	105
110				79.5	78.5	77	77	76	75	74.5	73.5	71	68.5	65	110
115				75	74	72.5	72.5	71.5	70.5	70	69	66.5	64.5	61.5	115
120				71	69.5	68.5	68	67	66	65.5	65	63	61	57.7	120
125					66	64.5	64	63.5	62	61.5	61	59.4	57.4	54.4	125
130					62.5	61	60.5	59.7	58.4	58	57.2	56	54.2	51.3	130
135					59.4	58.1	57.6	56.6	55.3	54.8	54	52.9	51.4	48.5	135
140					56.5	55.1	54.6	53.6	52.3	51.8	51	49.9	48.6	45.8	140
150						49.9	49.3	48.2	46.9	46.4	45.5	44.4	43.5	40.9	150
160							44.7	43.6	42.2	41.6	40.8	39.6	38.8	36.4	160
170							40.8	39.5	38.2	37.5	36.7	35.5	34.5	32.5	170
180								36.1	34.7	34	33.1	31.7	30.7	28.8	180
190								33.1	31.6	30.8	29.8	28.3	27.3	25.4	190
200									28.9	27.8	26.8	25.3	24.2	22.4	200
210										25.1	24.1	22.5	21.4	19.6	210
220										22.8	21.7	20.1	19	17.2	220
230											18.9	17.9	16.8	15	230
240											15.9	15.9	14.7	13	240
250												14.1	12.8	11.1	250
260												12.5	11.1	9.4	260
270													8.9	7.9	270
280														6.4	280

TAB 136010 / 136011

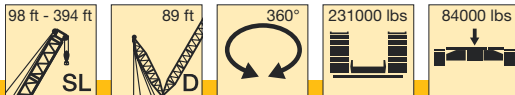
Lifting heights on SL boom

Hauteur de levage à la flèche principale SL



Lifting capacities on SLD boom/derrick combination

Forces de levage en configuration SLD



ft	98 ft	118 ft	138 ft	157 ft	177 ft	197 ft	217 ft	236 ft	256 ft *	276 ft *	295 ft *	315 ft *	335 ft *	354 ft *	374 ft *	394 ft *	ft
23	440	440															23
24	424	424															24
26	392	390	382	384													26
28	359	357	353	357													28
30	328	326	322	326	323	324											30
32	301	299	296	298	299	300	285	272	252								32
34	278	277	274	274	276	277	273	264	247								34
36	259	257	254	254	254	256	253	250	238	190							36
38	242	240	237	239	237	238	237	234	227	190							38
40	226	225	222	224	222	223	222	220	216	188	161	155	123				40
45	196	196	193	191	190	192	191	190	188	178	159	158	122	125	119	106	45
50	173	171	168	167	167	168	167	166	164	160	152	152	121	125	116	105	50
55	155	150	147	146	147	148	147	146	143	142	139	139	119	124	114	104	55
60	138	135	131	129	130	131	130	129	127	125	123	123	115	120	111	103	60
65	123	121	118	116	116	118	116	116	114	112	110	110	106	107	105	100	65
70	114	110	107	105	105	107	105	105	102	101	98	98	95.5	95.5	96	92	70
75	105	100	97	95.5	95	96.5	95.5	95.5	91.5	90.5	88.5	88	86.5	85.5	86	82.5	75
80	97.5	92	88.5	87	87	87.5	88	86.5	83	82	80	79.5	78.5	77.5	76.5	73.5	80
85	90.5	85.5	82	79.5	79.5	80.5	81.5	78	76	75	73	73.5	71.5	71.5	68.5	65.5	85
90	84	79.5	76	74	73.5	74.5	75.5	72	69.5	68.5	66.5	67.5	64.5	66	63	59.9	90
95		73.5	70	68.5	68	69	70	67	63	62	60.5	62	58.1	60.5	57.8	54.9	95
100		68.5	65	63.5	63	64	65	62.5	57.3	56.3	54.8	56.7	52.2	55.6	53	50.1	100
105		64.5	61	58.9	58.2	58.8	60	58.3	52.6	51.6	50.1	51.6	47.3	50.9	48.4	45.5	105
110		60.5	57.9	54.5	53.7	54.1	55.3	54.3	48.6	47.6	46.3	46.9	43.5	46.5	44.1	41.3	110
115			54.8	51	50.1	50.4	50.8	50.5	44.8	43.8	42.8	42.4	39.9	42.2	40	37.3	115
120			51.8	48.1	46.9	47.3	46.4	46.9	41.1	40.1	39.3	38	36.4	38.2	36.1	33.4	120
125				45.3	44	44.7	42.2	43.4	37.6	36.6	36	33.8	33.1	34.2	32.3	29.6	125
130				42.8	41.3	42.1	39.5	40	34.9	33.9	32.9	30.7	30	30.5	28.6	26	130
135				40.3	38.7	39.7	37.4	36.8	32.5	31.4	29.9	28.2	27	26.9	25.2	22.6	135
140				37.9	36.2	37.4	35.4	33.6	30.2	29.1	27	25.9	24	23.3	21.8	19.2	140
150					32.1	32.9	31.5	29.1	25.8	24.8	22.4	21.5	19.6	18.3	16.9	14.5	150
160						28.7	28	26	21.7	20.7	19	17.3	16.4	15	13.7	11.7	160
170						24.7	24.6	23.4	17.9	16.8	16	13.4	13.8	12.5	11.3	9.6	170
180						22.4	21.5	21	15.6	14.3	13.2	11	11.4	10.2	9	7.7	180
190							18.5	18.7	13.7	12.1	10.6	9	9.1	8			190
200								16.5	12	10.1	8.3						200
210									10.3								210
220									8.8								220

* raisable only with derrick ballast / seulement relevable avec contrepoids derrick

TAB 136048

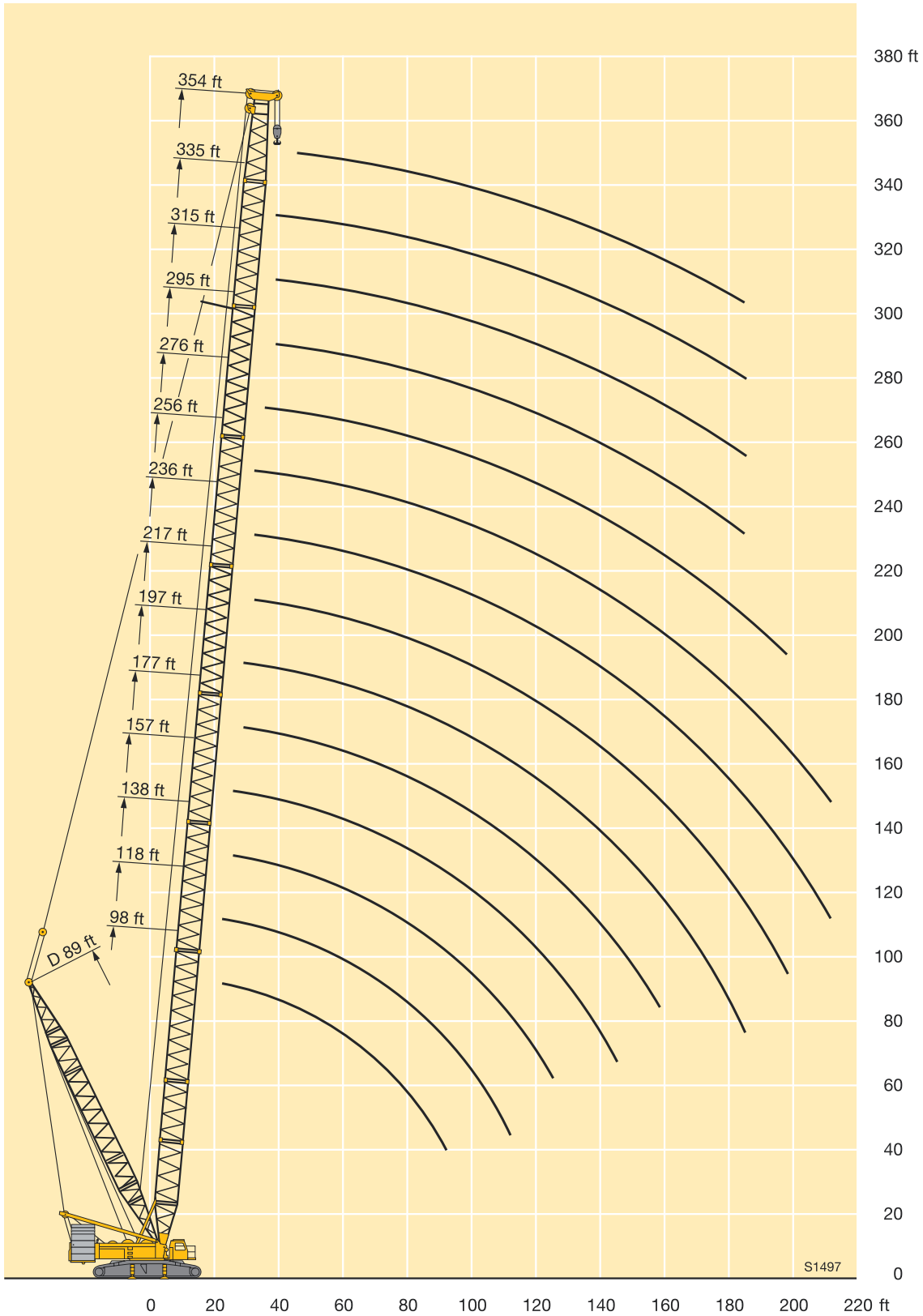
Remarks referring to load charts

- When calculating crane stresses and loads, German Industrial Standards (DIN) are applicable, in conformance with new German legislation (published 2/85). The lifting capacities (stability margin) DIN/ISO correspond to DIN 15019, part 2, and ISO 4305 (Tested load = 1.25 x lifting capacity + 0.1 x boom dead weight, reduced to the boom point). The crane's structural steel work is in accordance with DIN 15018, part 3. Design and construction of the crane comply with DIN 15018, part 2 and with F.E.M. regulations.
- Lifting capacities are given in metric tons.
- The weight of the load hook and hook blocks as well as of the lifting tackle must be deducted from the lifting capacities.
- The working radii are measured from the slewing centreline.
- Unless particularly specified, crane operation is permissible up to a dynamic pressure of 50 N/m², wind speed of 9 m/s. For further details in respect to wind speeds refer to the operating instructions.
- The subsoil must be even and of good bearing capacity.
- Subject to modification of lifting capacities.
- The crane can be displaced with suspended loads as stated in the load charts. Operating conditions must conform to the rules in the operating instructions.
- Lifting capacities above 300 t only with special equipment.

Remarques relatives aux tableaux des charges

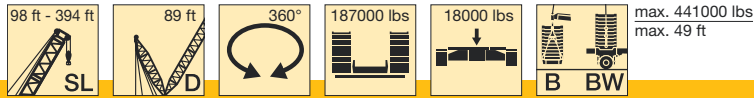
- La grue est calculée selon normes DIN conformément au décret fédéral 2/85. Les charges DIN/ISO respectent les sécurités au basculement requises par les normes DIN 15019, partie 2 et ISO 4305. La structure de la grue est conçue selon la norme DIN 15018, partie 3. La conception générale est réalisée selon la norme DIN 15018, partie 2, ainsi que selon les recommandations de la F.E.M.
- Les charges sont indiquées en tonnes.
- Les poids du crochet ou du moufle ainsi que des élingues sont à déduire des charges indiquées.
- Les portées sont prises à partir de l'axe de rotation de la partie tournante.
- Si non spécifié autrement, le service de grue est admissible jusqu'à une pression dynamique de 50 N/m², vitesse de vent de 9 m/s. D'autres indications concernant les vitesses de vent sont stipulées dans les instructions de service.
- Le sol doit être plat et résistant.
- Charges données sous réserve de modification.
- La grue peut être déplacée avec les charges indiquées dans les tableaux des charges. Les conditions de service sont stipulées dans les instructions de service.
- Forces de levage plus de 300 t seulement avec équipement supplémentaire.

Lifting heights on SLD boom/derrick combination Hauteur de levage en configuration SLD



Lifting capacities on SLDB/BW boom/derrick combination

Forces de levage en configuration SLDB/BW

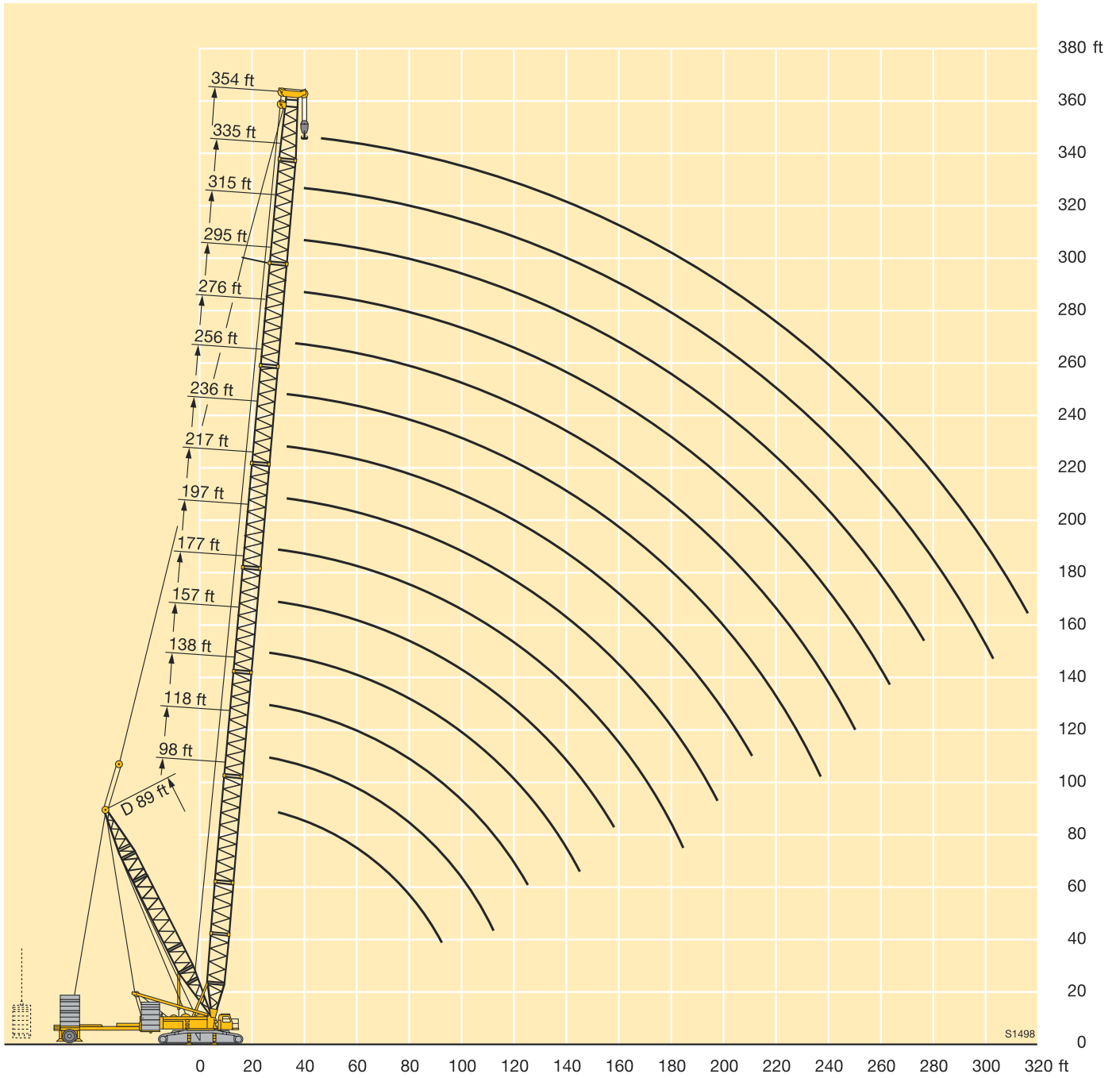


ft	98 ft	118 ft	138 ft	157 ft	177 ft	197 ft	217 ft	236 ft	256 ft	276 ft	295 ft	315 ft	335 ft	354 ft	374 ft	394 ft	ft
23	441	441															23
24	441	441															24
26	441	441	441	423													26
28	441	441	441	423													28
30	441	441	441	422	396	350											30
32	441	441	441	422	396	351	320	281	247								32
34	441	441	441	422	396	351	321	283	246								34
36	441	441	441	422	397	351	321	283	245	221							36
38	441	441	441	422	397	351	321	283	242	220							38
40	441	441	441	424	397	350	321	283	240	218	188	174	150				40
45	441	441	441*	423	396	350	321	282	237	215	187	171	150	132	119	110	45
50	441	441	441	423	396	350	322	277	233	211	183	168	149	132	117	109	50
55	436	441	441	423	395	350	318	275	229	208	179	167	148	132	115	108	55
60	436	440	441	423	395	348	312	271	224	206	174	165	146	132	113	107	60
65	407	433	440	423	395	340	301	267	221	204	170	162	145	130	112	106	65
70	374	402	417	406	393	327	290	263	216	202	167	160	143	130	111	105	70
75	343	370	387	384	380	315	279	260	211	199	164	158	140	129	109	104	75
80	313	342	357	359	358	302	267	255	206	197	161	156	138	128	108	103	80
85	284	317	334	332	334	289	255	253	201	195	160	153	135	126	106	102	85
90	252	295	312	313	313	276	243	251	196	193	158	151	134	124	103	100	90
95		274	292	297	294	263	231	248	192	191	156	148	133	121	100	98	95
100		254	272	282	276	250	220	243	188	188	155	146	133	119	98.5	96	100
105		233	254	268	260	238	209	237	183	186	153	143	132	117	96	93.5	105
110		211	237	251	245	226	198	233	180	183	151	142	131	115	93.5	91	110
115			222	237	232	215	189	228	176	181	148	139	130	113	91.5	89	115
120			206	224	219	204	180	222	173	178	146	137	129	111	90	87.5	120
125				211	207	194	172	214	170	176	144	135	125	109	88	86	125
130				199	198	185	164	205	166	173	142	133	122	107	86.5	84	130
135				188	189	177	157	197	163	170	140	131	120	106	84.5	82.5	135
140				176	181	168	150	189	161	167	138	129	117	104	83	81	140
150					165	152	136	173	156	160	133	125	112	101	79.5	77.5	150
160						138	123	159	152	152	128	121	108	97.5	76.5	74	160
170						124	112	145	145	143	122	117	104	95	73.5	71	170
180						109	101	134	135	132	115	114	101	91.5	70.5	68	180
190							90.5	122	125	121	108	108	97.5	89	68	65.5	190
200								107	115	111	99.5	102	94	86.5	65.5	63	200
210									105	100	90.5	97	90	84	63.5	60.5	210
220									96	86	79.5	90	86	81.5	61.5	58.9	220
230									88.5	72	67	85.5	82.5	80	59.6	57.3	230
240										57.8	54.6	81.5	78.5	77.5	58.3	55.9	240
250											42.7	77.5	73	74.5	57.2	55	250
260											31.3	72.5	64.5	70.5	56.2	53.3	260
270												67	55.5	66.5	55.3	51.6	270
280													48.5	62.5	54.3	50	280
290														58.9	53.4	47.9	290
300														55.2	52.4	42.8	300
310														51.5	50	37.8	310
320															47	32.7	320
330																27.7	330
340																22.7	340

* maximum load moment / couple de charge maximum

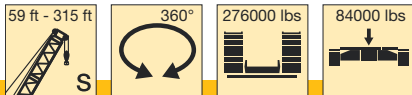
TAB 136025 / 136026 / 136027 / 136124 / 136128 / 136129 / 136130

Lifting heights on SLDB/BW boom/derrick combination Hauteur de levage en configuration SLDB/BW



Lifting capacities on S boom

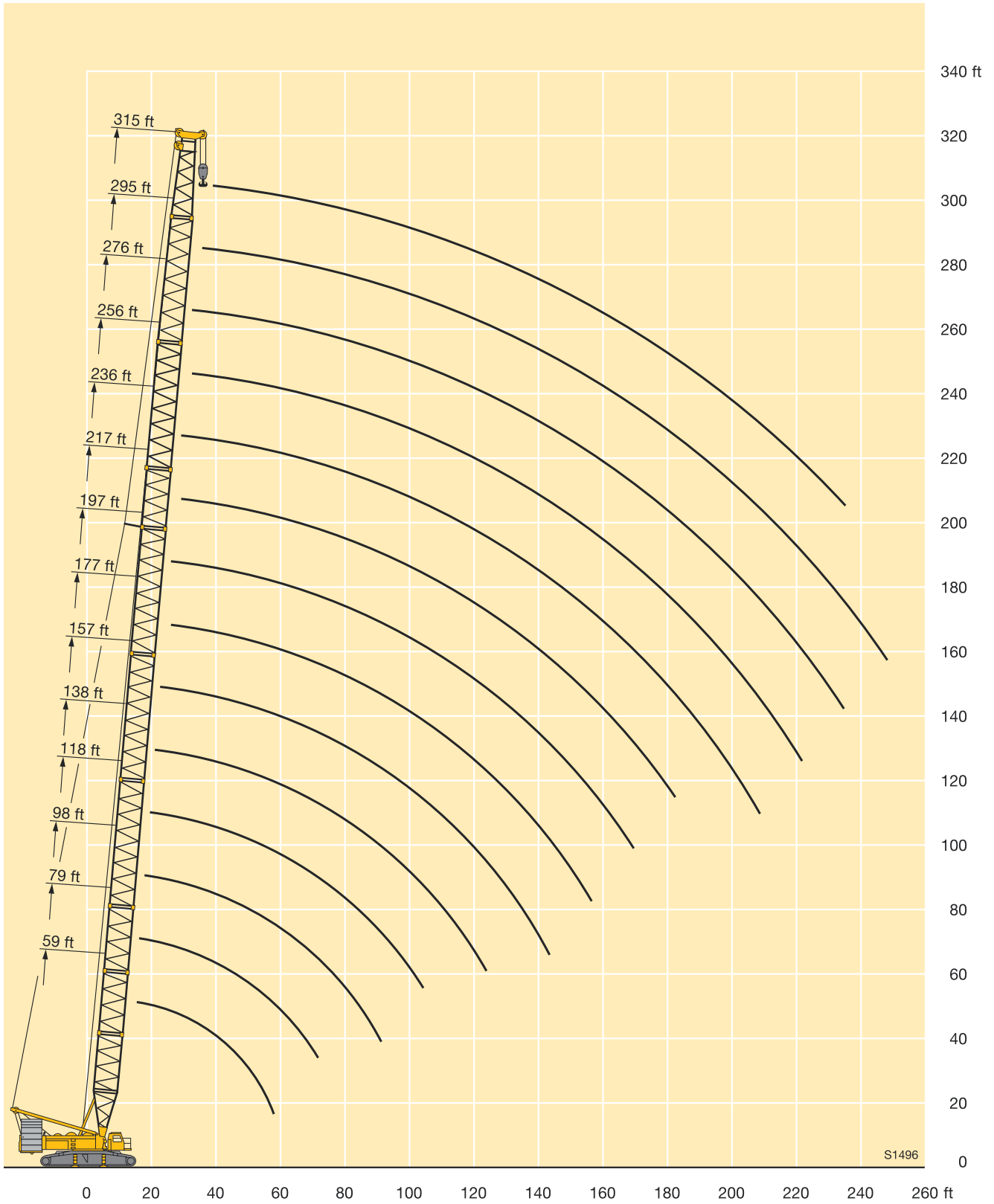
Forces de levage à la flèche principale S



ft	59 ft	79 ft	98 ft	118 ft	138 ft	157 ft	177 ft	197 ft	217 ft	236 ft	256 ft	276 ft	295 ft	315 ft	ft
16	661	661													16
17	657	661													17
18	650	661	661												18
19	635	654	661												19
20	621	643	650	594											20
21	607	625	615	561	507										21
22	593	602	582	531	491										22
23	579	577	549	504	467	490									23
24	557	555	524	482	448	471									24
26	515	512	473	438	457	433	402	379							26
28	480	469	434	404	427	402	379	358							28
30	445	428	398	372	396	373	353	335	319	291					30
32	404	395	403	379	369	349	331	315	300	282	260	227			32
34	367	364	388	365	345	328	311	297	283	270	254	225			34
36	333	333	361	341	324	308	293	280	268	256	244	223	200		36
38	307	307	340	321	306	291	277	265	254	243	233	219	198		38
40	284	321	319	303	289	276	263	252	242	231	222	212	196	171	40
45	238	269	268	265	254	243	232	223	215	206	198	190	181	167	45
50	205	232	231	230	225	217	208	200	193	185	178	171	165	157	50
55	178	202	201	200	199	194	187	180	174	167	161	155	149	144	55
60		178	177	176	175	175	169	163	158	152	146	141	136	132	60
65		160	158	157	157	156	154	149	144	139	134	129	124	120	65
70		145	143	142	141	140	139	137	133	128	123	118	114	111	70
75			130	129	128	127	126	126	122	118	114	109	105	102	75
80			119	118	117	116	115	114	113	109	105	101	97.5	94.5	80
85			110	108	107	106	105	104	103	101	97.5	93.5	90	87.5	85
90			102	100	99	98	97	96	95	94	90.5	87	84	81.5	90
95				93	91.5	90.5	89.5	88.5	88	86.5	84.5	81	78	75.5	95
100				86.5	85	84	83	82	81	80	79	75.5	73	70.5	100
105					79.5	78.5	77	76	75	74	73	71	68	65.5	105
110					74.5	73	72	71	70	69	68	66.5	63.5	61.5	110
115					70	68.5	67	66.5	65	64	63	62	59.5	57.4	115
120					65.5	64.5	63	62	61	59.8	58.6	57.4	55.7	53.7	120
125						60.5	59.1	58.1	57	55.8	54.6	53.4	52.2	50.3	125
130						57.1	55.6	54.6	53.4	52.2	51	49.7	48.8	47.1	130
135						54.1	52.5	51.5	50.3	49.1	47.9	46.4	45.5	44	135
140						51.3	49.6	48.5	47.3	46.1	44.8	43.2	42.4	40.9	140
150							44.4	43.2	41.9	40.6	39.3	37.5	36.5	35.2	150
160								38.6	37.2	35.8	34.3	32.5	31.4	30.1	160
170								34.7	33	31.5	29.9	28.2	26.9	25.7	170
180									29.4	27.8	26.1	24.5	23.1	21.9	180
190										24.5	22.8	21.2	19.7	18.5	190
200										21.5	19.8	18.1	16.6	15.4	200
210											17.1	15.4	13.8	12.6	210
220											14.8	13	11.4	10.1	220
230												10.9	9.2	7.9	230
240													7.2		240

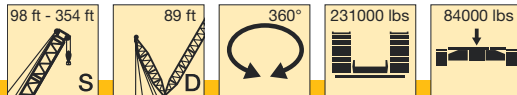
TAB 136131 / 136132

Lifting heights on S boom Hauteur de levage à la flèche principale S



Lifting capacities on SD boom/derrick combination

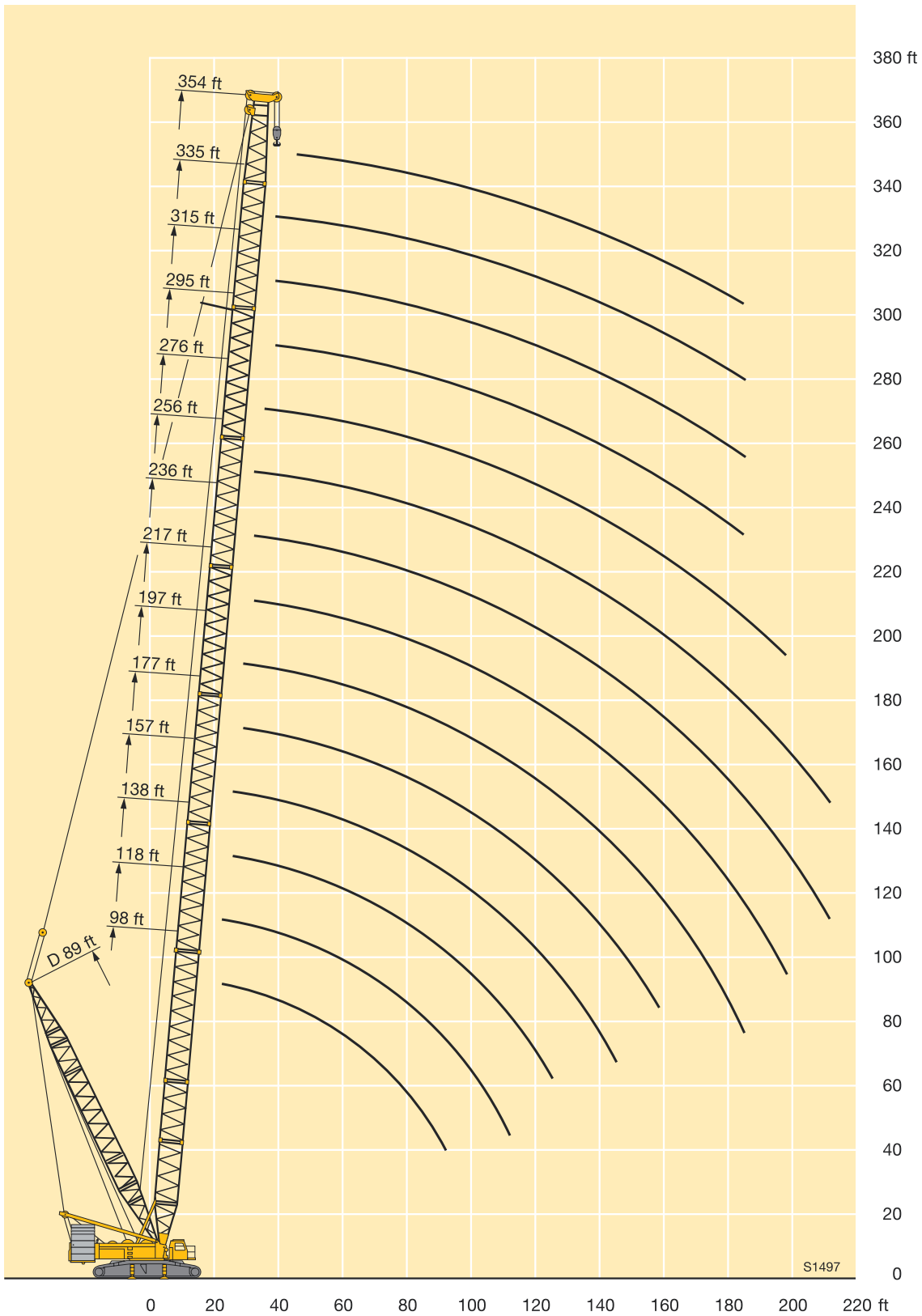
Forces de levage en configuration SD



ft	98 ft	118 ft	138 ft	157 ft	177 ft	197 ft	217 ft	236 ft *	256 ft *	276 ft *	295 ft *	315 ft *	335 ft *	354 ft *	ft
21	508														21
22	490														22
23	463	461													23
24	439	437													24
26	391	390	381	383											26
28	356	355	351	355											28
30	325	323	319	324	320	320									30
32	298	296	293	295	296	296	280	266	254						32
34	275	274	270	271	273	274	268	258	247						34
36	255	254	250	251	251	251	249	244	234	222					36
38	239	237	233	235	233	234	233	230	222	212					38
40	223	222	218	221	218	218	217	217	211	202	194	183	161		40
45	192	192	189	187	186	187	186	186	184	180	173	166	157	132	45
50	170	167	164	163	163	163	162	161	160	158	154	150	144	130	50
55	152	147	144	143	143	143	142	141	140	138	135	134	131	124	55
60	135	131	128	126	126	126	125	124	123	122	118	118	118	114	60
65	120	117	114	113	112	113	111	111	110	108	105	105	103	102	65
70	110	107	103	102	101	102	99.5	101	98	96.5	93.5	93	92	90.5	70
75	102	97	93.5	92	91	91.5	90.5	91	88	86	84	83	82.5	80.5	75
80	94	88.5	85	83.5	82.5	82.5	83	82	79.5	77.5	76	75	74.5	72	80
85	87	81.5	78.5	76	75	75.5	76.5	73	72.5	70.5	69	68.5	67.5	66	85
90	80.5	75.5	72	70	69	70	71	67	66	64	62.5	63	60.5	60.5	90
95		70	66.5	65	64	64.5	65	62	59.5	57.8	56.1	57.4	54	55.5	95
100		65	61.5	59.9	58.7	59	60	57.6	53.8	52.2	50.5	52.2	48.1	50.6	100
105		60.5	57.5	55.2	54	53.9	55	53.3	49.1	47.4	45.8	47.2	43.2	46	105
110		56.9	54.2	50.8	49.5	49.2	50.3	49.3	45.1	43.4	42.1	42.5	39.4	41.6	110
115			51.1	47.2	45.8	45.5	45.7	45.5	41.3	39.5	38.5	38	35.8	37.5	115
120			48	44.3	42.6	42.4	41.3	41.8	37.7	35.9	35	33.6	32.3	33.5	120
125				41.5	39.7	39.8	37.1	38.3	34.2	32.4	31.7	29.5	29	29.6	125
130				38.9	37	37.3	34.5	34.9	31.5	29.6	28.6	26.4	25.9	25.9	130
135				36.4	34.4	34.9	32.3	31.7	29.1	27.2	25.6	24	22.9	22.3	135
140				34	31.8	32.6	30.3	28.5	26.8	24.9	22.7	21.8	19.9	18.8	140
150					27.7	28.2	26.5	24	22.5	20.7	18.2	17.6	15.6	14	150
160						24	23	21	18.4	16.6	15	13.6	12.7	11.1	160
170						20	19.6	18.6	14.6	12.8	12.2	9.9	10.5	9.2	170
180						17.7	16.5	16.3	12.4	10.5	9.7	7.7	8.4	7.3	180
190							13.6	14.1	10.6	8.5					190
200								12.1	9						200

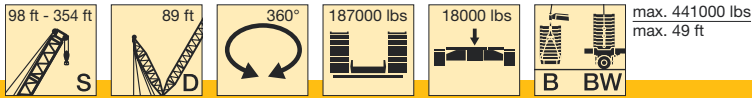
* raisable only with derrick ballast / seurement relevable avec contrepoids derrick

Lifting heights on SD boom/derrick combination Hauteur de levage en configuration SD



Lifting capacities on SDB/BW boom/derrick combination

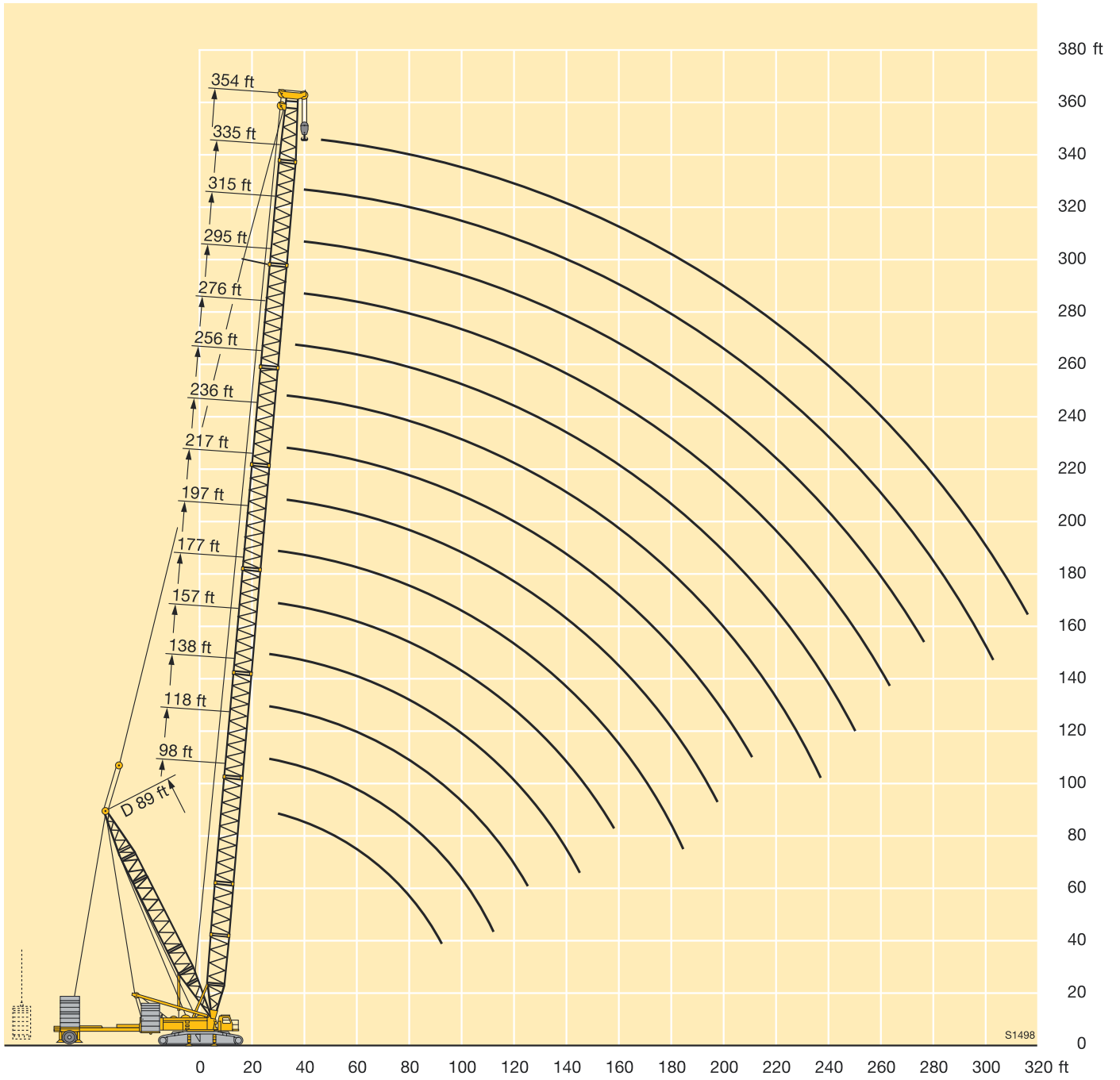
Forces de levage en configuration SDB/BW



ft	98 ft	118 ft	138 ft	157 ft	177 ft	197 ft	217 ft	236 ft	256 ft	276 ft	295 ft	315 ft	335 ft	354 ft	ft
21	661														21
22	661														22
23	661	661													23
24	661	661													24
26	661	661	661	621											26
28	661	661	661	618											28
30	661	661	661	616	541	460									30
32	661	661	661	613	537	457	390	346	298						32
34	661	661	661	608	533	455	389	345	297						34
36	661	661	661	606	530	452	387	344	296	256					36
38	661	661	655	602	527	449	385	343	295	254					38
40	654	655	644	599	524	447	383	341	294	253	220	187	162		40
45	594	608	597	594	517	442	380	339	291	250	216	183	160	136	45
50	535	559	550	554	510	437	376	336	289	247	214	181	159	134	50
55	481	513	506	512	492	432	372	332	285	243	212	180	158	133	55
60	435	470	468	475	463	425	367	326	282	240	210	178	156	131	60
65	396	429	438	441	434	417	362	320	276	235	208	177	155	130	65
70	363	394	412	411	409	400	357	315	271	231	207	176	154	129	70
75	333	362	383	384	382	379	349	310	266	227	205	174	153	127	75
80	304	333	352	357	356	356	338	304	261	222	203	172	152	126	80
85	277	308	327	330	332	332	322	298	255	217	200	169	151	124	85
90	245	286	305	311	312	312	306	288	250	212	198	166	148	122	90
95		265	284	294	293	293	290	277	245	208	196	163	146	119	95
100		245	264	278	275	276	274	266	240	203	194	161	143	117	100
105		226	246	261	258	261	259	254	235	199	192	158	141	115	105
110		204	230	245	243	247	245	243	228	194	190	156	139	113	110
115			214	231	230	234	232	231	221	189	188	154	137	111	115
120			199	217	217	222	221	220	213	184	185	152	135	109	120
125				205	205	210	210	209	205	179	181	150	133	107	125
130				192	196	200	201	200	197	175	176	147	130	106	130
135				181	187	191	192	191	189	170	171	145	126	104	135
140				169	177	182	184	183	180	165	166	143	122	102	140
150					160	165	168	168	165	156	155	137	116	98.5	150
160						148	154	153	152	146	143	131	110	94	160
170						133	141	140	141	136	131	125	104	89.5	170
180						119	128	130	130	126	121	116	100	85.5	180
190							116	119	120	115	110	107	95.5	81.5	190
200								108	110	106	101	98.5	91	77.5	200
210									100	97	92	93	87	74	210
220									92	89	87	86	82.5	70.5	220
230									84	83.5	82.5	81	77.5	66.5	230
240										78	78	77	74	62.5	240
250											73.5	72.5	70.5	58.7	250
260											67.5	67	67	54.9	260
270												61.5	62.5	51.2	270
280													58.2	47.6	280
290													53.9	44.1	290
300													49.3	40.1	300
310														35.5	310

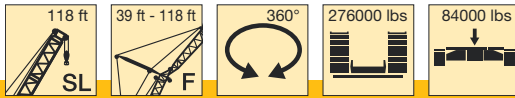
TAB 136022 / 136023 / 136024 / 136123 / 136125 / 136126 / 136127

Lifting heights on SDB/BW boom/derrick combination
Hauteur de levage en configuration SDB/BW



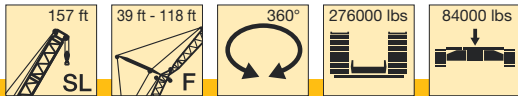
Lifting capacities on SLF boom/jib combination

Forces de levage en configuration SLF



ft	118 ft															ft
	39 ft			59 ft			79 ft			98 ft			118 ft			
	10°	25°	40°	10°	25°	40°	10°	25°	40°	10°	25°	40°	10°	25°	40°	
32	132															32
34	132															34
36	132															36
38	132															38
40	132			132												40
45	132	130		129			105									45
50	132	125		122			100									50
55	132	119	78.5	116	83		95			80			56.5			55
60	132	114	76.5	110	79.5		89			76			55.7			60
65	132	109	74	105	76	55.5	84	60.5		71.5			55.1			65
70	128	105	72.5	99.5	73	54	79.5	58.1		67.5			54.2			70
75	123	101	70.5	94.5	70.5	52.5	75	55.7		64	47		53.1			75
80	118	97	69	89	67.5	51.1	71	53.5	42.3	60.5	45		51.6			80
85	114	94	67	84.5	65.5	49.9	67.5	51.5	41	57.2	43.1		50.1	38.2		85
90	106	91	66	80.5	63	48.7	64	49.7	39.9	54.2	41.4		48.1	36.7		90
95	99	88.5	65	77	61	47.6	60.5	47.9	38.8	51.4	39.9	32.2	45.8	35.2		95
100	92	86	64	74	59.1	46.5	57.8	46.3	37.8	48.7	38.4	31.2	43.4	33.7		100
105	86	83.5	63	71	57.4	45.5	55.4	44.7	36.9	46.2	37	30.3	41.1	32.4	25.9	105
110	81	81	62	68	55.9	44.8	53.3	43.2	36.1	44.1	35.7	29.4	38.9	31.2	25	110
115	76	77	61.5	65.5	54.5	44.2	51.2	41.9	35.2	42.2	34.5	28.6	36.9	30.1	24.2	115
120	72	72.5	60.5	63	53.1	43.6	49.3	40.8	34.5	40.6	33.3	27.9	35.2	29	23.4	120
125	68	68.5	60.5	60.5	51.8	43	47.4	39.7	33.8	39	32.2	27.2	33.7	28	22.8	125
130	64	65	60.5	58.2	50.5	42.5	45.6	38.7	33.3	37.5	31.2	26.5	32.3	27	22.1	130
135	61			56.5	49.5	42	43.9	37.7	32.8	36.1	30.4	25.9	31.1	26.1	21.5	135
140	57.9			54.9	48.7	41.7	42.3	36.8	32.3	34.7	29.6	25.3	29.9	25.2	20.9	140
150				51.6	47.5		39.5	35.1	31.4	32.1	28	24.3	27.5	23.7	19.8	150
160							37.3	33.7	30.8	29.7	26.6	23.5	25.3	22.4	18.9	160
170							35.4	33	30.8	27.9	25.2	22.7	23.3	21.2	18.2	170
180							33.6			26.4	24.4	22.2	21.7	20	17.5	180
190										25	23.9		20.4	19.1	16.9	190
200													19.3	18.4	16.5	200

TAB 136060 / 136066 / 136072

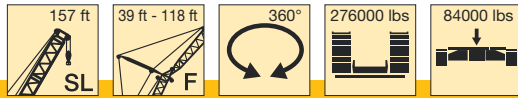


ft	138 ft															ft
	39 ft			59 ft			79 ft			98 ft			118 ft			
	10°	25°	40°	10°	25°	40°	10°	25°	40°	10°	25°	40°	10°	25°	40°	
32	132															32
34	132															34
36	132															36
38	132															38
40	132			129												40
45	132	123		122			98.5									45
50	132	119		116			94.5									50
55	132	115	79.5	110	84		90			75.5						55
60	132	111	77.5	105	81		85.5			72.5			56.2			60
65	129	107	75.5	101	77.5	55.9	82	61		69.5			55.3			65
70	125	104	73.5	96.5	75	54.6	78.5	59		66.5			54.1			70
75	120	101	72	92.5	72	53.2	75	56.8		64	47.6		52.7			75
80	115	98	70.5	89	70	51.9	72	54.7	42.6	61.5	45.7		51.1			80
85	111	95.5	69	85.5	67.5	50.7	69.5	52.8	41.4	58.9	43.9		49.6	38.7		85
90	105	93	67.5	82	65.5	49.6	67	51	40.4	56.6	42.3		47.9	37.3		90
95	97.5	91	66.5	79.5	63.5	48.5	64	49.4	39.4	54.2	40.8	32.5	46.2	35.9		95
100	91	88.5	65.5	76.5	61.5	47.5	61.5	47.8	38.5	51.7	39.4	31.6	44.6	34.5		100
105	85	86	64.5	74.5	59.7	46.6	58.8	46.4	37.6	49.3	38.1	30.7	43.1	33.2		105
110	79.5	81	63.5	72	58.2	45.7	56.5	45	36.8	47	36.9	29.9	41.4	32.1	25	110
115	75	76	63	70	56.8	45	54.5	43.6	36	44.9	35.7	29.1	39.5	31	24.5	115
120	70.5	71.5	62	68	55.5	44.4	52.6	42.4	35.3	43	34.6	28.4	37.6	30	23.8	120
125	66.5	67.5	61.5	65.5	54.2	43.9	50.8	41.3	34.6	41.4	33.5	27.7	35.8	29	23.1	125
130	63	63.5	60.5	63	53	43.4	49	40.3	34	40	32.4	27.1	34.3	28	22.5	130
135	59.7	60.5	58.9	59.9	51.8	42.9	47.4	39.4	33.5	38.6	31.6	26.5	33.1	27.1	22	135
140	56.6	57.2	56.7	56.9	50.7	42.4	45.8	38.5	33	37.3	30.7	25.9	31.9	26.3	21.4	140
150	51.1	51.6		51.3	49	41.7	42.7	36.8	32.2	34.7	29.2	24.9	29.6	24.7	20.4	150
160				46.5	46.9		40	35.2	31.4	32.3	27.9	24.1	27.5	23.4	19.4	160
170				42.3	42.9		38	33.9	30.7	30.1	26.6	23.4	25.5	22.2	18.7	170
180							36.2	33.2	30.6	28.4	25.3	22.7	23.6	21.1	18	180
190							34.6	32.7		26.9	24.5	22.2	22	20.1	17.5	190
200										25.6	24		20.8	19.2	16.9	200
210													19.7	18.5	16.4	210
220													18.7	18.1	16.4	220
230													17.8			230

TAB 136060 / 136066 / 136072

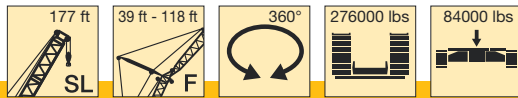
Lifting capacities on SLF boom/jib combination

Forces de levage en configuration SLF



ft	157 ft															ft	
	39 ft			59 ft			79 ft			98 ft			118 ft				
	10°	25°	40°	10°	25°	40°	10°	25°	40°	10°	25°	40°	10°	25°	40°		
36	132																36
38	132																38
40	132																40
45	132			129			103										45
50	132	131		124			100										50
55	132	128		119			96				77.5						55
60	132	124	80.5	119			96				75.5			54.7			60
65	132	120	78.5	114	88.5		92				71			53.6			65
70	132	116	76.5	109	85.5	56.3	88.5	67			73			52.4			70
75	132	113	75	105	82.5	55.1	85.5	65			71			51			75
80	129	110	73.5	102	80	53.7	82	63			68.5			49.5			80
85	122	107	72	98	77.5	52.5	79.5	60.5			66.5	50.7		48.3			85
90	112	104	70.5	94.5	75	51.4	76.5	58.7	41.8		64	48.9		46.1	40.1		90
95	104	101	69	91.5	73	50.3	74	56.9	40.8		62	47.2		45.6	38.7		95
100	96.5	97	68	88.5	71	49.3	71.5	55.2	39.9		60	45.6		44.2	37.4		100
105	90	91.5	66.5	86	69	48.4	69.5	53.7	39		58.1	44.2	32.9	45.1	36.2		105
110	84	85	65.5	83.5	67	47.5	67.5	52.1	38.2		56.3	42.8	32	44.2	34.4		110
115	78.5	80	65	78.5	65.5	46.7	65	50.7	37.4		54.2	41.6	31.3	43.3	32.5	27.5	115
120	74	75	64	74	64	45.9	62.5	49.3	36.7		52.1	40.4	30.6	42.5	31.1	27	120
125	69.5	70.5	63.5	69.5	62.5	45.2	60.5	48	36		49.9	39.2	29.9	41.7	30.2	26.3	125
130	65.5	66.5	62.5	65.5	61	44.5	58.5	46.8	35.3		47.9	38.1	29.2	40.9	29.2	25.6	130
135	61.5	62.5	62	62	59.8	44.1	56.7	45.6	34.7		46.2	37.1	28.6	39.9	28.6	25	135
140	58.5	59.4	59.6	58.8	58	43.6	55	44.7	34.2		44.8	36.1	28.1	38.6	28.1	24.4	140
145	55.5	56.2	56.6	55.7	56	43.2	53.3	43.7	33.7		43.4	35.2	27.5	37.3	27.5	23.9	145
150	49.9	50.6	51	50.1	51.3	42.3	49.6	41.9	32.8		40.7	33.5	26.5	34.8	26.5	22.8	150
160	45.1	45.7		45.3	46.3	41.6	45.6	40.3	32		38.2	32	25.6	32.5	25.6	21.8	160
170	40.9	41.3		41	41.9	41.1	41.3	38.7	31.4		35.8	30.7	24.9	30.4	25.7	20.9	170
180				37.4	38.1		37.7	37.5	30.7		33.6	29.4	24.3	28.5	24.6	20.3	180
190				34.2			34.4	35.1	30.5		31.8	28.3	23.8	26.6	23.5	19.7	190
200							31.4	32.2			30.2	27.3	23.3	24.9	22.4	19.2	200
210											28.6	26.7		23.6	21.5	18.7	210
220											26	26.3		22.5	20.8	18.2	220
230											23.7			21.5	20.3	18.1	230
240														20.5	19.9		240

TAB 136060 / 136066 / 136072

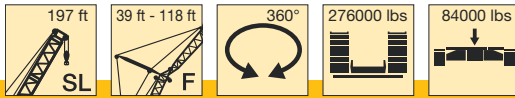


ft	177 ft															ft	
	39 ft			59 ft			79 ft			98 ft			118 ft				
	10°	25°	40°	10°	25°	40°	10°	25°	40°	10°	25°	40°	10°	25°	40°		
36	132																36
38	132																38
40	132																40
45	132			121													45
50	132	123		117													50
55	132	116		112			90				74						55
60	132	113	79	108	82		86.5				72			54.6			60
65	132	110	77.5	104	80		83.5				69.5			53			65
70	130	107	76	100	77.5		80.5				67			51.5			70
75	126	104	74.5	96.5	75.5	54.1	77.5	61			65			50			75
80	119	102	73	93.5	73.5	53	75	59.2			63	50.2		48.7			80
85	111	100	71.5	90.5	72	51.9	72.5	57.7	42		61	48.8		47.5			85
90	103	98	70.5	88	70.5	50.9	70.5	56.3	41.1		59	47.6		46.4			90
95	95.5	95	69	85.5	68.5	50	68	54.9	40.2		57.2	46.4		45.5	39.7		95
100	88.5	90.5	68	83	67.5	49.1	66	53.7	39.4		55.5	45.2	33.6	44.5	38.7		100
105	82.5	84	67	80.5	66	48.2	64	52.5	38.6		53.8	44.1	32.9	43.7	37.8		105
110	77.5	79	66	77	64.5	47.4	62.5	51.4	37.9		52.3	43	32.1	42.8	36.8	27.7	110
115	72.5	74	65	73	63.5	46.7	60.5	50.3	37.2		50.8	41.9	31.4	41.8	35.8	27.2	115
120	68	69.5	64.5	68.5	62	45.9	58.9	49.2	36.5		49.4	40.8	30.8	40.7	34.7	26.5	120
125	64	65.5	63.5	64.5	61	45.2	57.3	48.2	35.9		48	39.7	30.2	39.7	33.7	25.9	125
130	60.5	61.5	62	61	60	44.7	56.1	47.1	35.3		46.7	38.7	29.6	38.7	32.8	25.3	130
135	57.3	58.4	59.1	57.6	58.1	44.2	54.7	46.1	34.7		45.6	37.7	29	37.8	31.9	24.7	135
140	54.3	55.2	55.9	54.5	55.5	43.8	53.4	45.1	34.2		44.5	36.8	28.5	36.9	31.1	24.2	140
150	48.7	49.6	50.1	48.9	50.2	43	49.3	43.3	33.3		42.5	35.1	27.5	35.3	29.4	23.2	150
160	43.9	44.6	45.1	44	45.2	42.2	44.4	41.7	32.5		40.6	33.6	26.6	33.7	27.9	22.2	160
170	39.7	40.3	40.6	39.8	40.8	41.3	40.1	40.2	31.9		38.6	32.2	25.8	32	26.6	21.4	170
180	36.1	36.6		36.2	37.1	37.7	36.5	37.4	31.3		36.3	31	25.2	30.3	25.5	20.7	180
190	32.9			32.9	33.7		33.2	34.3	30.7		33.4	29.9	24.6	28.5	24.4	20.1	190
200				30	30.6		30.2	31.2	30		30.4	28.8	24.1	26.8	23.4	19.6	200
210							27.4	28.3			27.5	27.7	23.6	25.2	22.5	19.1	210
220							24.8	25.7			25	25.9	23.3	23.9	21.6	18.7	220
230											22.6	23.7		22.1	20.9	18.2	230
240											20.4	21.3		20.2	20.2	18	240
250														18.2	19.3		250
260														16.3	17.3		260

TAB 136060 / 136066 / 136072

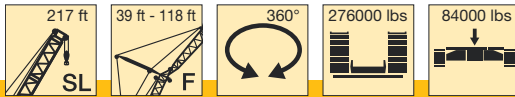
Lifting capacities on SLF boom/jib combination

Forces de levage en configuration SLF



ft	197 ft															ft	
	39 ft			59 ft			79 ft			98 ft			118 ft				
	10°	25°	40°	10°	25°	40°	10°	25°	40°	10°	25°	40°	10°	25°	40°		
40	132																40
45	132																45
50	131																50
55	128																55
60	122	104															60
65	118	97.5	79.5														65
70	114	94.5	76.5	96.5	74												70
75	110	92	75	92.5	71.5												75
80	106	89.5	73.5	89.5	70												80
85	103	87	72.5	86	68	54.8											85
90	99.5	85	71	83	66	53.7											90
95	94	82.5	70	80	64.5	52.7											95
100	88	80.5	69	75	61.5	50.9											100
105	82	79	68	73	59.9	50											105
110	76.5	77	67	70.5	58.5	49.2											110
115	72	73	66	68.5	57.2	48.4											115
120	67.5	68.5	65	66.5	55.9	47.7											120
125	63.5	64.5	64.5	64.5	54.7	47											125
130	59.7	61	61.5	63	53.5	46.4											130
135	56.5	57.6	58.5	60	52.5	45.7											135
140	53.4	54.5	55.3	57.1	51.6	45.2											140
150	47.9	48.8	49.5	54	50.7	44.7											150
160	43.1	43.9	44.4	48.4	48.2	43.8											160
170	38.8	39.5	40	43.5	44.8	42.8											170
180	35.3	35.8	36.2	39.3	40.4	41.1											180
190	32	32.5		35.6	36.7	37.4											190
200	29	29.4		32.3	33.2	33.8											200
210				29.3	30.1												210
220				26.4	27.2												220
230				23.9	24.5												230
240																	240
250																	250
260																	260
270																	270
280																	280

TAB 136060 / 136066 / 136072

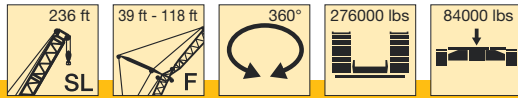


ft	217 ft															ft	
	39 ft			59 ft			79 ft			98 ft			118 ft				
	10°	25°	40°	10°	25°	40°	10°	25°	40°	10°	25°	40°	10°	25°	40°		
40	131																40
45	125																45
50	118																50
55	112																55
60	107	88.5	74.5														60
65	103	85.5	72.5														65
70	99	83	70.5														70
75	95.5	80	68.5														75
80	92	77.5	67														80
85	88.5	75.5	65.5														85
90	85.5	73.5	64														90
95	83	71.5	62.5														95
100	80	69.5	61														100
105	77.5	67.5	59.8														105
110	74.5	66	58.6														110
115	70.5	64	57.5														115
120	66	62.5	56.4														120
125	62	61	55.3														125
130	58.4	59.2	54.4														130
135	55.1	56.4	53.3														135
140	52	53.2	52.2														140
150	46.5	47.5	48.3														150
160	41.6	42.5	43.2														160
170	37.4	38.2	38.8														170
180	33.8	34.5	35														180
190	30.4	31.1	31.4														190
200	27.2	27.9															200
210	24.4	24.9															210
220	21.9	22.4															220
230																	230
240																	240
250																	250
260																	260
270																	270
280																	280
290																	290
300																	300

TAB 136060 / 136066 / 136072

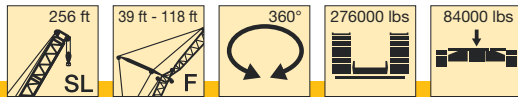
Lifting capacities on SLF boom/jib combination

Forces de levage en configuration SLF



ft	236 ft															ft		
	39 ft			59 ft			79 ft			98 ft			118 ft					
	10°	25°	40°	10°	25°	40°	10°	25°	40°	10°	25°	40°	10°	25°	40°			
45	122															45		
50	118															50		
55	114	91		89												55		
60	110	89.5		86			68.5					57.4				60		
65	106	87.5	71	83	62		66					55.5			46.6	65		
70	103	85.5	70	80.5	61		64					53.6			45.4	70		
75	100	83.5	69	78	59.6		62	47.2				51.8			44.1	75		
80	97	81.5	67.5	76	58.4	48.3	59.9	46				50.1			42.9	80		
85	94.5	79.5	66.5	73.5	57.2	47.5	58.1	44.8				48.5	37.3		41.8	85		
90	91.5	77.5	65.5	71.5	56	46.7	56.4	43.8				47	36.5		40.8	90		
95	87	76	64.5	69.5	54.8	45.9	54.9	42.8	35.7			45.6	35.7		39.7	95		
100	81.5	74.5	63.5	67.5	53.6	45.3	53.4	41.9	35.1	44.3		34.9			38.5	29.8	100	
105	76.5	73	62.5	65.5	52.5	44.6	52	41	34.6	43.1	34.2	27.6			37.4	29	105	
110	72	71.5	62	64	51.5	44	50.7	40.3	34	42	33.5	27.1			36.2	28.3	110	
115	68	69	61	62.5	50.5	43.4	49.4	39.5	33.5	40.9	32.9	26.6			35.2	27.7	115	
120	64	66	60.5	60.5	49.5	42.9	48.2	38.8	33	39.8	32.2	26.1			34.2	27	21.4	120
125	60.5	62.5	59.6	59.2	48.6	42.4	47	38.1	32.5	38.8	31.6	25.7			33.2	26.4	21	125
130	57.2	58.7	58.7	56.9	47.7	41.9	45.9	37.5	32.1	37.9	31	25.3			32.3	25.9	20.6	130
135	54	55.4	56.2	54.2	46.9	41.4	44.8	36.9	31.6	37	30.4	24.9			31.4	25.3	20.3	135
140	50.9	52.2	53.1	51.3	46.1	41	43.8	36.3	31.2	36.1	29.9	24.5			30.6	24.8	19.9	140
150	45.2	46.4	47.3	46	44.7	40.2	41.9	35.1	30.4	34.4	28.9	23.8			28.9	23.8	19.3	150
160	40.2	41.3	42.1	41.1	42.7	39.4	39.9	34.1	29.7	32.8	27.9	23.2			27.4	22.9	18.7	160
170	35.8	36.8	37.5	36.8	38.2	38.5	37.2	33.1	29.1	31.4	27	22.5			26	22	18.1	170
180	32	32.9	33.5	33	34.4	35.2	33.4	32.3	28.6	30.1	26.1	22			24.8	21.2	17.5	180
190	28.6	29.4	29.7	29.5	30.8	31.8	29.9	30.7	28.2	28.5	25.4	21.5			23.7	20.5	17	190
200	25.6	26.3	26.2	26.3	27.5	28.3	26.7	28.4	27.6	26.3	24.7	21.2			22.7	19.9	16.5	200
210	22.9	23.5		23.3	24.5	24.7	23.8	25.4	26.3	23.4	24	20.9			21.7	19.3	16.1	210
220	20.5	21		20.9	21.8	21.7	21	22.6	23.6	20.9	22.4	20.6			20.1	18.9	15.9	220
230	18.3	18.7		18.6	19.4		18.6	20.1	20.7	18.3	20.2	20.1			18.1	18.4	15.7	230
240	16.2			16.4	17.2		16.5	17.8	18	16	17.9	18.8			15.8	17.4	15.5	240
250				14.5	15.1		14.7	15.7		14	15.6	16.7			13.5	15.6	15.2	250
260				12.7	13.2		12.8	13.7		12.5	13.9	14.6			11.7	13.8	14.5	260
270							11.2	11.9		10.9	12.1				10.4	12.1	13.1	270
280										9.3	10.3				9	10.4	11.3	280
290										7.9	8.7				8.8			290
300										6.5	7.2				7.3			300

TAB 136060 / 136066 / 136072

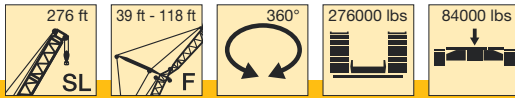


ft	256 ft															ft		
	39 ft			59 ft			79 ft			98 ft			118 ft					
	10°	25°	40°	10°	25°	40°	10°	25°	40°	10°	25°	40°	10°	25°	40°			
45	110															45		
50	106															50		
55	102			81												55		
60	97.5	80		77.5			63									60		
65	94	77.5	65	74.5	57.3		60.5					51.2				65		
70	90.5	75.5	64	72	55.8		58.3					49.5				70		
75	87.5	73.5	62.5	69.5	54.1		56.2					47.7			40.4	75		
80	84.5	71	61	67	52.6	44.3	54.3	42.6				45.9			39	80		
85	81.5	69.5	59.5	64.5	51.2	43.3	52.4	41.4				44.3	34.7		37.7	85		
90	79	67.5	58.2	62.5	49.9	42.4	50.7	40.3				42.8	33.8		36.5	90		
95	77	66	57	60.5	48.6	41.5	49.1	39.2	32.8			41.4	32.8		35.3	95		
100	74.5	64.5	55.9	58.8	47.4	40.6	47.5	38.2	32.1	40		31.9			34.1	27.3	100	
105	72.5	62.5	54.8	57	46.2	39.8	46.1	37.2	31.4	38.7	31.1	25.4			33	26.5	105	
110	69.5	61.5	53.8	55.4	45.2	39.1	44.7	36.3	30.7	37.5	30.3	24.9			31.9	25.7	110	
115	66	59.9	52.9	53.8	44.1	38.3	43.4	35.4	30.1	36.4	29.5	24.3			30.8	25	115	
120	62	58.6	52	52.3	43.1	37.6	42.2	34.6	29.5	35.3	28.7	23.7			29.8	24.3	120	
125	58.5	57.4	51.1	50.8	42.2	37	41	33.9	29	34.2	28	23.2			28.8	23.7	19.1	125
130	55.2	56.1	50.2	49.4	41.3	36.3	39.9	33.1	28.4	33.2	27.4	22.7			28	23.1	18.7	130
135	52.3	53.7	49.4	48.1	40.5	35.8	38.8	32.4	27.9	32.2	26.8	22.3			27.1	22.5	18.3	135
140	49.5	51	48.5	46.9	39.6	35.2	37.7	31.8	27.5	31.3	26.1	21.9			26.3	22	17.9	140
150	44.3	45.7	45.6	43.3	38.1	34.1	35.7	30.5	26.5	29.5	25	21.1			24.7	21	17.2	150
160	39.7	40.8	41.7	39.1	36.7	33.1	34	29.3	25.7	27.9	23.9	20.3			23.2	20	16.5	160
170	35.3	36.4	37.2	35	35.5	32.2	32.4	28.2	24.8	26.4	22.9	19.6			21.8	19.1	15.9	170
180	31.5	32.5	33.1	31.3	32.5	31.4	30.8	27.2	24.1	25.2	21.9	19			20.6	18.3	15.4	180
190	28	28.8	29.1	27.8	29.3	29.6	28.1	26.3	23.5	24.1	21.1	18.4			19.6	17.5	14.8	190
200	24.7	25.2	25.2	24.6	26	26.9	24.9	25.3	23	22.9	20.4	17.9			18.7	16.8	14.3	200
210	21.5	21.7	21.4	21.7	23	23.5	22	23.7	22.5	21.6	19.8	17.4			17.8	16.2	13.9	210
220	19.3	19.3	18.9	18.8	20.1	20.3	19.5	21	21.3	19.1	19.2	17.1			17	15.7	13.5	220
230	17.1	17.3		16.5	17.5	17.5	16.9	18.6	19.3	16.7	18	16.7			15.8	15.2	13.2	230
240	15	15.4		14.6	15.4		14.6	16.3	16.9	14.5	16.3	16.2			14.2	14.7	12.9	240
250	13.1	13.5		13	13.7		12.8	14.3	14.3	12.4	14.2	15.2			12.4	14.2	12.6	250
260	11.3	11.6		11.2	11.9		11.3	12.4	12.4	10.6	12.5	13.4			10.3	12.4	12.3	260
270				9.6	10.1		9.7	10.7		9.3	10.8	11.5			8.6	10.8	11.5	270
280							8.2	9		7.9	9.1				9.2	10.2		280

TAB 136060 / 136066 / 136072

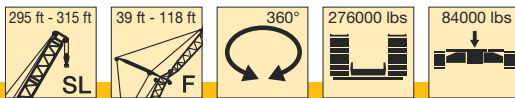
Lifting capacities on SLF boom/jib combination

Forces de levage en configuration SLF



ft	276 ft												ft
	39 ft			59 ft			79 ft			98 ft			
	10°	25°	40°	10°	25°	40°	10°	25°	40°	10°	25°	40°	
55	103			78									55
60	100	77		75.5			59.7						60
65	97.5	75	61.5	73			57.8			48.5			65
70	94.5	73.5	61	71			56			47			70
75	92	72	59.9	69	51.9		54.4			45.5			75
80	89.5	70.5	59	67	50.9	42	52.9	40.2		44			80
85	87	69.5	58.3	65.5	50	41.3	51.4	39.3		42.7			85
90	85	68	57.6	64	49.1	40.7	50.1	38.4		41.4			90
95	81	67	57	62.5	48.3	40.1	48.8	37.6		40.2	30.8		95
100	76.5	66	56.4	61	47.5	39.5	47.7	36.8	30	39.1	30.1		100
105	71.5	65	55.9	59.7	46.8	39	46.6	36.1	29.5	38.1	29.4		105
110	67.5	64.5	55.4	58.4	46.2	38.6	45.6	35.4	29	37.2	28.7	22.7	110
115	63.5	63.5	54.9	57.2	45.5	38.2	44.7	34.8	28.5	36.4	28.1	22.5	115
120	59.7	61.5	54.4	56.1	44.9	37.9	43.8	34.2	28.1	35.6	27.5	22.1	120
125	56.2	58.2	54	54.9	44.3	37.6	42.9	33.6	27.8	34.9	27	21.7	125
130	53.1	54.9	53.6	52.8	43.8	37.4	42.1	33.1	27.6	34.2	26.6	21.3	130
135	50.2	52	51.9	50.2	43.2	37.1	41.3	32.6	27.4	33.5	26.2	21	135
140	47.4	49.1	49.8	47.5	42.7	36.8	40.6	32.2	27.2	32.8	25.8	20.7	140
150	42.4	43.9	45.2	42.5	41.6	36.3	39	31.2	26.8	31.6	25	20.3	150
160	37.9	39.3	40.4	38	39.7	35.8	36.9	30.4	26.4	30.4	24.3	19.8	160
170	33.9	35.1	36.1	34	35.9	35.2	33.2	29.6	26.1	29.2	23.6	19.4	170
180	30.1	31.2	32	30.4	32.1	32.9	29.7	28.9	25.8	28	23	19	180
190	26.7	27.6	28.2	27	28.6	29.8	26.5	27.6	25.5	25.7	22.4	18.6	190
200	23.5	24.3	24.7	23.9	25.3	26.3	23.5	25.5	25	22.9	21.9	18.3	200
210	20.5	21	21.2	21.1	22.3	23.3	20.7	22.5	23.9	20.3	21.4	18	210
220	17.7	17.9	18	18.5	19.7	20.4	18.2	19.8	21.1	17.7	19.6	17.9	220
230	15.5	15.5	15.4	15.9	17.2	17.6	15.9	17.3	18.5	15.5	17.3	17.5	230
240	13.8	13.7		13.7	14.7	14.9	13.7	15.1	16.2	13.4	15.1	16.4	240
250	12.1	12.2		11.9	12.6		11.6	13.2	14	11.7	13.2	14.3	250
260	10.3	10.7		10.5	11.2		9.9	11.6	11.7	9.6	11.5	12.5	260
270	8.7	9.1		9	9.6		8.5	9.8	9.8	8	9.9	10.7	270
280					8			8.1			8.2	9	280

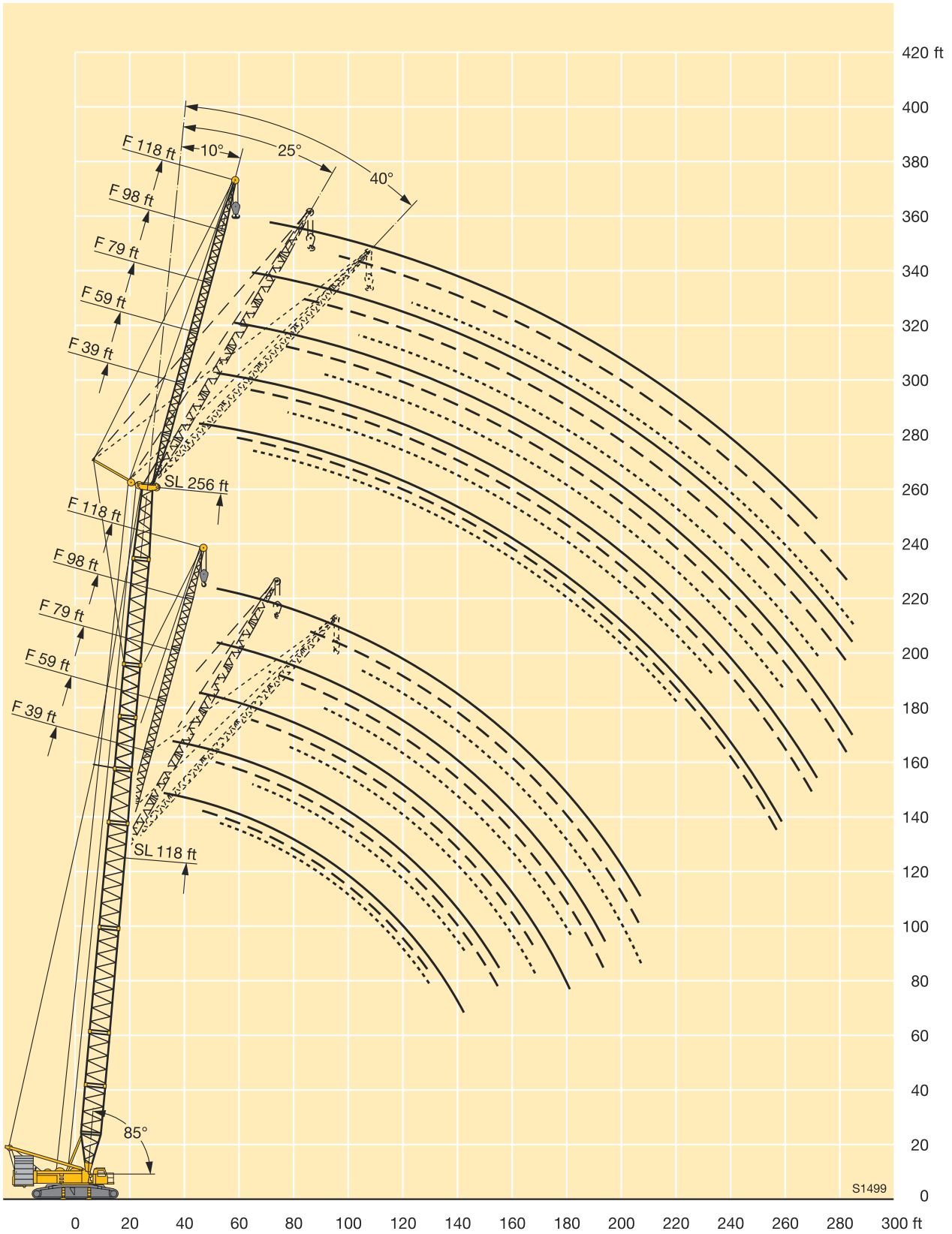
TAB 136060 / 136066 / 136072



ft	295 ft									315 ft			ft
	39 ft			59 ft			39 ft						
	10°	25°	40°	10°	25°	40°	10°	25°	40°				
55	89									85			55
60	85.5	71.5			69					83.5			60
65	82.5	69.5			66.5					82	67.5		65
70	80	67.5			64					78.5	67		70
75	77	65.5	55.9		62	48.5				75.5	66.5	53.7	75
80	74.5	64	54.5		60	47.3				73	66	52.8	80
85	72	62	53.2		58.3	46.2	39.2			70.5	65	52	85
90	70	60.5	52		56.6	45.2	38.3			69	63.5	51.4	90
95	68	59	50.9		54.9	44.3	37.4			67	62	50.8	95
100	66	57.5	49.9		53.3	43.3	36.6			64.5	60.5	50.2	100
105	64.5	56.2	49		51.8	42.3	35.7			63	59.5	49.7	105
110	62.5	54.8	48.1		50.4	41.4	35			60.5	58.4	49.2	110
115	59.8	53.6	47.2		49	40.5	34.3			57.1	57.3	48.8	115
120	56.6	52.3	46.4		47.7	39.6	33.7			53.7	55.5	48.3	120
125	53.2	51.1	45.5		46.4	38.8	33.2			50.4	52.6	47.9	125
130	50.1	50	44.8		45.2	38	32.7			47.3	49.4	47.5	130
135	47.3	48.1	44		44.1	37.3	32.2			44.6	46.6	46.1	135
140	44.5	45.9	43.3		43	36.5	31.8			41.9	43.8	44.4	140
150	39.6	41.3	41.1		39.6	35.1	30.9			37	38.8	40.2	150
160	35.1	36.7	37.9		35.4	33.8	30			32.6	34.2	35.5	160
170	31.2	32.6	33.7		31.4	32.5	29.2			28.7	30.2	31.2	170
180	27.7	29	29.9		28	29.7	28.4			25.3	26.7	27.5	180
190	24.5	25.6	26.4		24.8	26.5	26.8			22.2	23.5	24.2	190
200	21.4	22.4	23		21.8	23.4	24.5			19.3	20.5	21.1	200
210	18.6	19.5	19.8		19	20.4	21.4			16.6	17.6	18.2	210
220	15.8	16.5	16.7		16.4	17.8	18.7			14.3	15.1	15.4	220
230	13.3	13.7	13.9		14.2	15.4	16.2			11.9	12.5	12.8	230
240	11.3	11.4	11.4		12	13.2	13.7			9.7	10.1	10.3	240
250	9.8	9.7			9.8	11	11.2				7.9		250
260	8.4	8.5			8.4	9.2	9.1				6.5		260
270		7.2				7.8	7.6						270

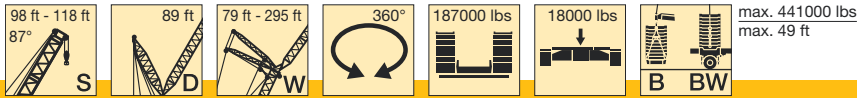
TAB 136060 / 136066 / 136072

Lifting heights on SLF boom/jib combination Hauteur de levage en configuration SLF



Lifting capacities on SDWB/BW boom/jib combination

Forces de levage en configuration SDWB/BW



ft	98 ft												ft
	79 ft	98 ft	118 ft	138 ft	157 ft	177 ft	197 ft	217 ft	236 ft	256 ft	276 ft	295 ft	
36	419												36
38	411												38
40	402												40
45	382	336	287										45
50	362	326	280										50
55	344	314	272	231									55
60	325	301	265	226	198	170							60
65	300	288	259	221	196	168	144						65
70	274	271	251	217	194	166	142						70
75	248	251	241	212	192	163	141	121					75
80	221	230	229	208	189	162	139	120	102	89.5			80
85	195	213	214	202	187	160	138	118	101	89	75		85
90		197	198	193	184	158	137	117	100	88	74		90
95		181	184	183	179	156	136	116	99.5	87.5	73	64.5	95
100		164	172	172	171	155	134	115	98.5	87	72.5	63.5	100
105			161	160	162	153	133	113	98	86	71.5	63	105
110			149	150	152	149	132	112	97	85.5	70.5	62.5	110
115			137	141	143	142	130	111	96	84.5	70	62	115
120			125	132	135	135	128	110	95.5	84	69	61.5	120
125				122	127	128	125	109	94.5	83.5	68.5	61	125
130				113	120	121	120	108	93.5	82.5	68	60.5	130
135				104	113	115	114	106	92.5	82	67	60	135
140				95	106	109	108	104	91.5	81.5	66	59.7	140
150					92.5	97.5	98	97	89.5	80	64.5	58.8	150
160						86.5	89	89	86.5	78	62.5	57.7	160
170						75.5	80	81	81	76.5	60.5	56.4	170
180						63	71.5	74	75	72	58.6	55.2	180
190							63	66.5	68.5	67	56.8	54.1	190
200								59.3	62.5	62	55	53	200
210								52.4	56	56.7	52.8	52	210
220								43.2	50.1	51.3	50.1	49.8	220
230									44.2	46.1	46.6	46.4	230
240										41.2	42.5	42.5	240
250										36.2	38.1	38.7	250
260										29	33.9	35.2	260
270											29.3	31.6	270
280												28.1	280
290												24.3	290
300												18.6	300

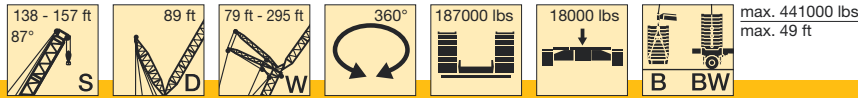
TAB 136087 / 136090 / 136093 / 136120 / 136121 / 136122

ft	118 ft												ft
	79 ft	98 ft	118 ft	138 ft	157 ft	177 ft	197 ft	217 ft	236 ft	256 ft	276 ft	295 ft	
36	382												36
38	375												38
40	368												40
45	351	306	264										45
50	335	297	258										50
55	320	286	252	214									55
60	305	276	246	210	183								60
65	291	266	241	206	180	155	133						65
70	274	254	235	202	178	154	132						70
75	252	242	228	198	177	152	130	113					75
80	227	228	220	194	175	151	129	112	96				80
85	201	214	213	189	173	149	128	111	95	83	70.5		85
90		200	203	184	170	148	127	110	94	82.5	69.5		90
95		184	191	179	167	147	126	109	93.5	81.5	68.5	60.5	95
100		168	177	173	163	145	125	108	92.5	81	68	59.9	100
105			164	165	157	144	124	107	91.5	80.5	67	59.4	105
110			152	154	150	141	122	107	91	80	66.5	58.9	110
115			139	144	144	136	121	106	90	79.5	65.5	58.5	115
120			128	134	137	130	120	105	89.5	79	65	58	120
125				125	130	124	118	104	88.5	78.5	64.5	57.6	125
130				115	122	119	113	103	87.5	78	63.5	57.2	130
135				107	115	114	109	102	86.5	77.5	63	56.9	135
140				97.5	107	109	104	101	85.5	76.5	62.5	56.5	140
150					93.5	98	95.5	97	83.5	75.5	60.5	55.6	150
160						87	87.5	91	81.5	74	58.9	54.6	160
170						76.5	80	82.5	79	72.5	57.1	53.3	170
180						64.5	72	74.5	74.5	69.5	55.4	52	180
190							64	67	69	65.5	53.8	50.8	190
200								59.8	63	60.5	52.1	49.6	200
210								52.8	56.5	56	50.2	48.1	210
220								44.1	50.5	51.3	47.5	45.4	220
230									44.8	46.4	44.2	42.1	230
240										41.5	40.7	38.5	240
250										36.5	37.1	35	250
260										29.6	33.6	31.8	260
270											29.5	28.7	270
280												25.7	280
290												22.6	290
300												18.6	300

TAB 136087 / 136090 / 136093 / 136120 / 136121 / 136122

Lifting capacities on SDWB/BW boom/jib combination

Forces de levage en configuration SDWB/BW



ft	138 ft												ft
	79 ft	98 ft	118 ft	138 ft	157 ft	177 ft	197 ft	217 ft	236 ft	256 ft	276 ft	295 ft	
40	320												40
45	309	272											45
50	299	266											50
55	288	259	227	195									55
60	277	252	222	192	168								60
65	265	244	218	188	166	143							65
70	251	236	213	185	164	141							70
75	236	228	207	182	162	140	120	104					75
80	220	218	201	179	160	139	119	103	89				80
85	203	208	194	175	158	137	118	102	88	77	66		85
90	170	197	186	171	155	136	117	102	87.5	76.5	65		90
95		185	178	166	152	135	116	101	86.5	76	64.5	56.6	95
100		171	169	160	148	133	115	100	86	75	63.5	56	100
105		155	161	152	144	130	114	99.5	85.5	74.5	63	55.5	105
110		130	151	146	138	127	112	99	84.5	74	62	55	110
115			141	139	132	123	111	98.5	84	73.5	61.5	54.5	115
120			129	133	126	118	109	98	83.5	73	61	54	120
125			117	126	120	113	108	96.5	83	73	60	53.6	125
130			99	117	115	108	107	95.5	82	72.5	59.6	53.2	130
135				109	110	104	104	94	80.5	72	59	52.8	135
140				100	105	99.5	102	92.5	79.5	71	58.3	52.4	140
150					94	91.5	95.5	88.5	77.5	70	56.9	51.5	150
160					80	84	88.5	83.5	75	68	55.3	50.5	160
170					61	76	81	77.5	72.5	66.5	53.7	49.4	170
180						65.5	73	72	68	63.5	52.2	48.3	180
190							64.5	66	63.5	59.3	50.7	47.2	190
200							59.8	58.9	55.1	49.2	46	46	200
210							54.8	53.1	54.4	50.9	47.3	44.3	210
220								44.7	49.9	47	44.2	41.3	220
230									44.8	43.2	40.8	38.1	230
240									37.8	39.6	37.4	34.8	240
250										36	34.1	31.7	250
260										29.9	31	28.7	260
270											28.1	25.9	270
280											23.6	23.2	280
290												20.6	290
300												18.2	300

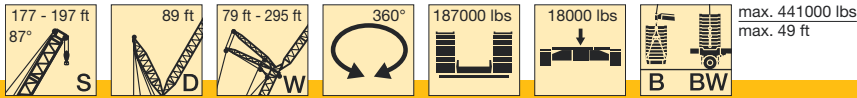
TAB 136087 / 136090 / 136093 / 136120 / 136121 / 136122

ft	157 ft												ft
	79 ft	98 ft	118 ft	138 ft	157 ft	177 ft	197 ft	217 ft	236 ft	256 ft	276 ft	295 ft	
40	285												40
45	274	239											45
50	265	233											50
55	256	227	200	176									55
60	246	220	195	172	152								60
65	236	214	190	168	149	131							65
70	227	206	186	165	146	129							70
75	218	199	181	162	143	127	110	96					75
80	209	192	175	159	141	125	109	95	82.5				80
85	200	186	170	155	139	123	107	94.5	81.5	71			85
90	178	178	164	151	136	121	106	93.5	81	70.5			90
95		171	159	146	133	119	105	92.5	80	70	59.6	51.7	95
100		163	153	142	130	118	104	92	79.5	69.5	58.9	51.2	100
105		155	146	137	126	115	103	91.5	78.5	69	58.3	50.8	105
110		136	140	132	123	113	101	90.5	78	68.5	57.6	50.3	110
115			133	126	119	110	99.5	89.5	77.5	68	57.1	49.9	115
120			127	121	114	108	97.5	88.5	77	67.5	56.5	49.5	120
125			120	116	110	105	95.5	86.5	76.5	67	56	49.1	125
130			104	111	105	103	93.5	85	75.5	66.5	55.5	48.8	130
135				105	101	101	92	83.5	74.5	66	54.9	48.4	135
140				99.5	96.5	98	90	82	73.5	65.5	54.4	48.1	140
150					89	92	86	78.5	71.5	63.5	53.1	47.3	150
160					79.5	85	80.5	75	69	62	51.7	46.4	160
170					64	78	75	70.5	66	59.8	50.1	45.4	170
180						68.5	69.5	65.5	61.5	56.9	48.7	44.3	180
190							63.5	61	57.5	53.4	47.3	43.2	190
200							55.8	56.3	53.3	49.5	45.6	41.9	200
210								51.9	49.3	45.8	43.3	40	210
220								46	45.6	42.2	39.9	36.9	220
230									42	38.9	36.7	33.9	230
240									37	35.6	33.6	31	240
250										32.5	30.7	28.2	250
260										29.5	27.9	25.6	260
270											25.2	23.1	270
280											22.1	20.6	280
290												18.2	290
300												16	300

TAB 136087 / 136090 / 136093 / 136120 / 136121 / 136122

Lifting capacities on SDWB/BW boom/jib combination

Forces de levage en configuration SDWB/BW



ft	177 ft												ft
	79 ft	98 ft	118 ft	138 ft	157 ft	177 ft	197 ft	217 ft	236 ft	256 ft	276 ft	295 ft	
40	238												40
45	238												45
50	231	209											50
55	224	198	175										55
60	215	193	170	151	134								60
65	207	187	166	148	131	116							65
70	198	181	162	145	128	114							70
75	191	174	158	143	126	112	99.5						75
80	184	168	153	140	124	110	98	86.5	75				80
85	177	162	148	136	122	108	96.5	85.5	74	65.5			85
90	171	156	144	132	120	107	95	84	73.5	65			90
95		151	139	128	117	105	94	83	72.5	64.5	54.8		95
100		146	135	125	114	103	92.5	82	72	64	54.2	47.7	100
105		141	131	121	111	101	91.5	81	71	63.5	53.6	47.2	105
110		135	126	118	108	99	90	80	70.5	63	53	46.7	110
115			121	114	105	96.5	88.5	79	69.5	62	52.5	46.3	115
120			116	110	103	94.5	86.5	78	69	61.5	52	45.9	120
125			111	105	100	92.5	84.5	76.5	68	61	51.5	45.5	125
130			105	101	97.5	90	83	75	67	60.5	51	45.1	130
135				97	94.5	88	81	73.5	66	59.7	50.5	44.8	135
140				92.5	92	86	79.5	72	64.5	58.9	50	44.4	140
150					86.5	81.5	76	69.5	62.5	57	48.9	43.7	150
160					79.5	77	72.5	66.5	60	55	47.6	42.8	160
170					67	71.5	68	63	57.9	53.1	46.2	41.6	170
180						66.5	63	59	55	50.9	44.9	40.4	180
190							58.5	54.8	51.4	48.1	43.3	39.1	190
200							53.1	50.7	47.7	44.9	41.3	37.4	200
210								46.8	44	41.5	38.6	35.3	210
220								43.2	40.7	38.3	35.6	32.6	220
230									37.4	35.3	32.7	30	230
240									34.1	32.4	29.9	27.4	240
250										29.6	27.3	24.9	250
260										26.9	24.8	22.5	260
270											22.3	20.2	270
280											20	18	280
290												15.9	290
300												13.9	300

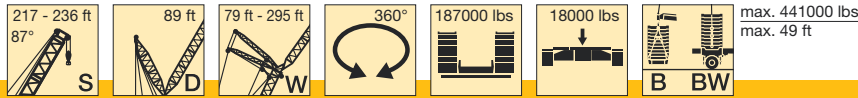
TAB 136087 / 136090 / 136093 / 136120 / 136121 / 136122

ft	197 ft												ft
	79 ft	98 ft	118 ft	138 ft	157 ft	177 ft	197 ft	217 ft	236 ft	256 ft	276 ft	295 ft	
45	209	185											45
50	204	180											50
55	197	175	156										55
60	190	170	152	135									60
65	183	165	148	132	117	104							65
70	176	160	144	129	115	102							70
75	170	155	141	126	113	100	89						75
80	163	149	136	124	110	98.5	87.5	77					80
85	158	144	132	121	108	96.5	86	76	67.5	59.4			85
90	152	140	128	117	106	95	85	75	66.5	58.6			90
95		135	124	114	104	93.5	83.5	74	66	57.8	49.8		95
100		131	120	111	101	92	82.5	72.5	65	57	49.2	43.3	100
105		127	117	107	98.5	90	81.5	72	64	56.2	48.7	42.8	105
110		122	113	104	96	88	80	71	63.5	55.5	48.2	42.3	110
115			110	101	94	85.5	78.5	70	62.5	54.8	47.7	41.8	115
120			106	98.5	91.5	83.5	77	69	62	54.2	47.2	41.3	120
125			101	95.5	89	81.5	75	67.5	61.5	53.6	46.7	40.8	125
130			97.5	93	87	79.5	73.5	66	60.5	53	46.2	40.4	130
135				90.5	84.5	77.5	72	65	59.5	52.2	45.8	40	135
140				88	82.5	76	70	63.5	58.2	51.5	45.3	39.6	140
150					78	72	67	61	55.9	49.7	44	38.7	150
160					73.5	68.5	64	58.3	53.7	47.8	42.6	37.6	160
170					68	64.5	60.5	55.8	51.6	46	40.9	36.3	170
180						60	56.8	52.6	49.2	44.3	39.4	34.9	180
190							52.9	49.1	46.4	42.2	37.8	33.6	190
200							49.2	45.6	43.2	39.7	36	32.2	200
210								42.1	40	36.6	33.8	30.6	210
220								39	36.9	33.7	31.1	28.3	220
230									34	31	28.5	26	230
240									31.2	28.3	26	23.7	240
250										25.8	23.6	21.5	250
260										23.4	21.3	19.4	260
270											19.1	17.4	270
280											17	15.4	280
290												13.5	290
300												11.7	300

TAB 136087 / 136090 / 136093 / 136120 / 136121 / 136122

Lifting capacities on SDWB/BW boom/jib combination

Forces de levage en configuration SDWB/BW



ft	217 ft												ft
	79 ft	98 ft	118 ft	138 ft	157 ft	177 ft	197 ft	217 ft	236 ft	256 ft	276 ft	295 ft*	
45	183												45
50	178												50
55	172	153	137										55
60	167	149	133	120									60
65	161	145	130	117	103	92.5							65
70	155	140	127	114	101	91							70
75	149	136	124	112	99	89	79						75
80	144	131	121	109	97	87.5	77.5	68.5					80
85	139	127	117	107	95	86	76.5	67.5	60	52.9			85
90	135	123	113	104	93	84.5	75	66.5	59.2	52.1			90
95		119	110	101	91.5	83	74	65.5	58.3	51.3	44.5		95
100		115	107	98	89	81.5	72.5	64.5	57.4	50.5	43.8	38.1	100
105		112	104	95	87	80	71.5	63.5	56.5	49.7	43.2	37.5	105
110		109	100	92.5	84.5	78	70.5	62.5	55.7	49	42.6	36.9	110
115			97	90	82.5	76	69	61.5	54.9	48.3	42	36.4	115
120			94.5	87.5	80.5	74	67.5	61	54.2	47.7	41.5	35.9	120
125			91.5	85	78.5	72	65.5	59.7	53.5	47.1	41	35.4	125
130			88.5	82.5	76.5	70.5	64	58.2	52.8	46.5	40.5	34.9	130
135				80	74.5	68.5	62.5	56.9	51.7	45.8	40	34.5	135
140				78	72.5	67	61	55.6	50.6	45	39.5	34.1	140
150					68.5	63.5	58.4	53.1	48.4	43.4	38.3	33.1	150
160					64.5	60.5	55.7	50.7	46.3	41.6	36.9	32.1	160
170					61	57.3	53	48.4	44.4	39.8	35.4	30.9	170
180						53.8	50.1	46	42.5	38.2	33.9	29.6	180
190							47	43.2	40.3	36.5	32.5	28.3	190
200							43.7	40.3	37.8	34.5	31	27	200
210								37.2	35.1	32.1	29.2	25.7	210
220								34.4	32.3	29.4	26.9	24.1	220
230									29.6	26.9	24.6	22.1	230
240									27.1	24.5	22.4	20.1	240
250										22.2	20.3	18.1	250
260										20	18.3	16.3	260
270											16.3	14.5	270
280											14.5	12.8	280
290												11.1	290
300												9.5	300

* nur mit Ballastwagen / only with ballast trailer / seulement avec porteur de lest

TAB 136087 / 136090 / 136093 / 136120 / 136121 / 136122

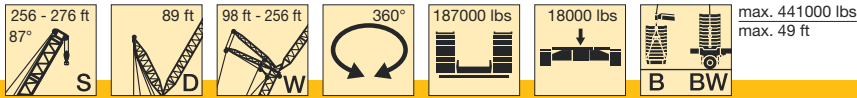
ft	236 ft											ft	
	79 ft	98 ft	118 ft	138 ft	157 ft	177 ft	197 ft	217 ft	236 ft	256 ft	276 ft*		
45	159												45
50	155												50
55	151	134	121										55
60	146	131	118	105									60
65	141	127	115	103	92								65
70	136	124	112	100	90								70
75	131	120	109	98	88	78.5	70						75
80	127	116	106	96	86.5	76.5	68.5	61					80
85	123	112	103	94	84.5	75	67	59.6	53.1				85
90	119	109	99.5	91.5	83	73.5	66	58.6	52.2				90
95		105	96.5	89	81	72.5	65	57.5	51.2	44.9	39		95
100		102	93.5	86	79	71	63.5	56.5	50.4	44.1	38.3		100
105		98.5	90.5	83.5	77	69.5	62.5	55.6	49.5	43.3	37.7		105
110		95.5	88	81	74.5	68	61.5	54.7	48.8	42.7	37		110
115			85.5	79	72.5	66	60.5	53.9	48	42	36.5		115
120			83	76.5	70.5	64.5	58.9	53	47.3	41.3	35.9		120
125			80.5	74.5	69	62.5	57.3	52	46.6	40.7	35.4		125
130			78.5	72	67	61	55.9	50.7	45.9	40.1	34.9		130
135				70	65	59.4	54.5	49.5	45	39.5	34.4		135
140				68	63.5	57.9	53.2	48.3	43.9	38.8	33.9		140
150					59.9	54.9	50.5	46	41.9	37.2	32.7		150
160					56.7	52	48	43.8	39.9	35.4	31.3		160
170					53.6	49.3	45.5	41.7	38.1	33.7	29.6		170
180						46.8	43.2	39.6	36.3	32.1	28.1		180
190							40.8	37.6	34.6	30.6	26.7		190
200							38.3	35.5	32.7	29	25.3		200
210								33.1	30.6	27.3	24		210
220								30.5	28.2	25.3	22.5		220
230									25.9	23.1	20.8		230
240									23.7	21	19		240
250										19	17.2		250
260										17	15.4		260
270											13.7		270
280											12.1		280

* nur mit Ballastwagen / only with ballast trailer / seulement avec porteur de lest

TAB 136087 / 136090 / 136093 / 136120 / 136121 / 136122

Lifting capacities on SDWB/BW boom/jib combination

Forces de levage en configuration SDWB/BW



ft	256 ft									ft
	98 ft	118 ft	138 ft	157 ft	177 ft	197 ft	217 ft	236 ft	256 ft	
55	118									55
60	115									60
65	112									65
70	109			93						70
75	105			90.5						75
80	102			88.5						80
85	98			86						85
90	95			84						90
95	92			82.5						95
100	89			80						100
105	86.5			79						105
110	84			77						110
115	81			75.5						115
120				73						120
125				71						125
130				69						130
135				67						135
140				64.5						140
150				62.5						150
160				61						160
170				59.3						170
180				57.6						180
190				56						190
200				54.4						200
210				52.8						210
220				51.2						220
230				49.6						230
240				48						240
250				46.4						250
260				44.8						260
270				43.2						270

TAB 136087 / 136090 / 136093 / 136120 / 136121 / 136122

ft	276 ft						ft
	138 ft	157 ft	177 ft	197 ft	217 ft	236 ft	
65	78	69.5					65
70	76.5	68					70
75	74.5	66.5					75
80	72.5	65					80
85	71	63.5					85
90	69	62					90
95	67	61					95
100	65	59.3					100
105	63	57.5					105
110	61	55.7					110
115	58.9	53.9					115
120	57.1	52.3					120
125	55.2	50.7					125
130	53.4	49.1					130
135	51.7	47.6					135
140	50	46.1					140
150	46.5	43.2					150
160		40.5					160
170		37.9					170
180							180
190							190
200							200
210							210
220							220
230							230
240							240

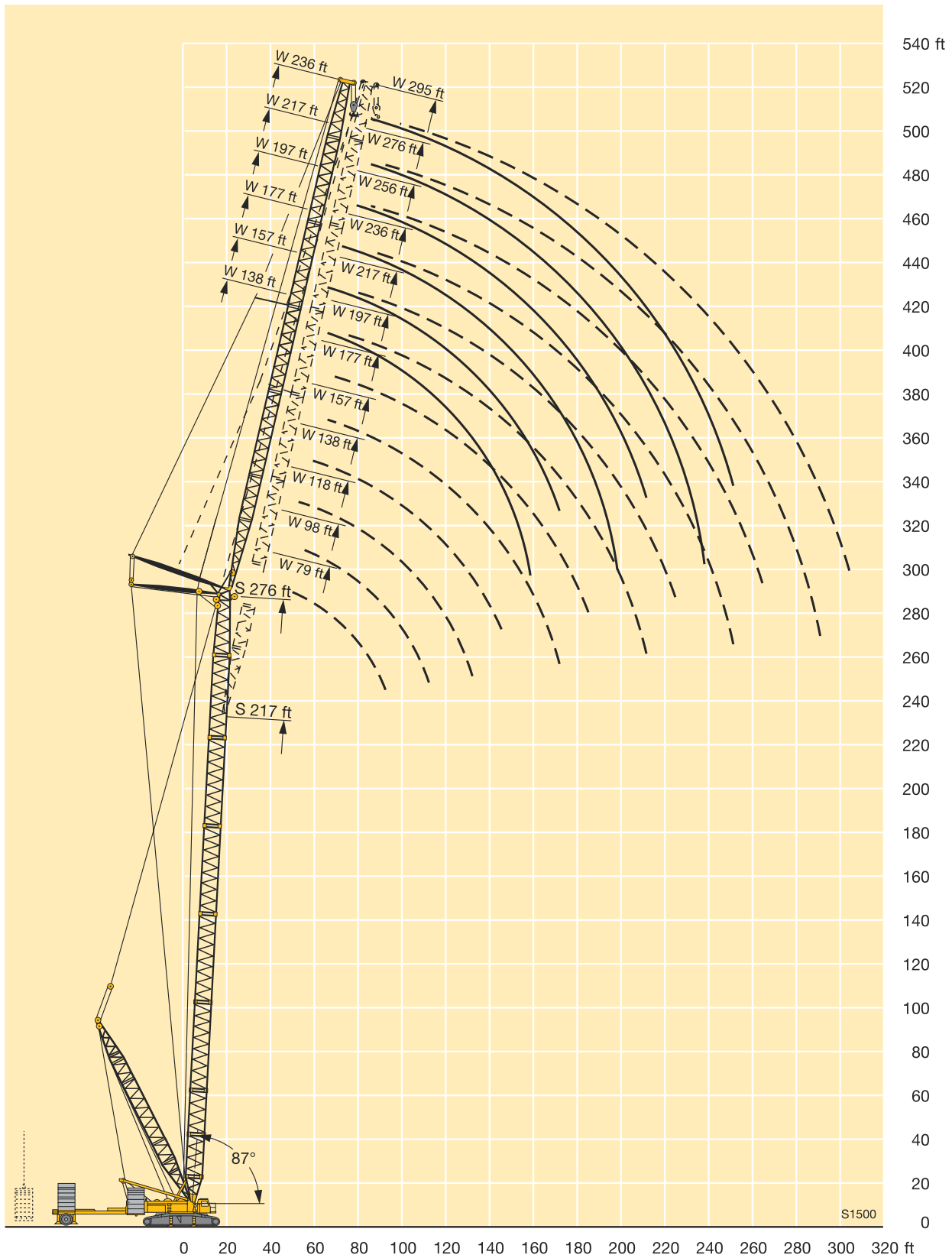
TAB 136087 / 136090 / 136093 / 136120 / 136121 / 136122

Continuously interpolation of the load capacities for main boom angle from 87° to 47°

Interpolation automatique des capacités de levage pour angles flèche principale entre 87° et 47°

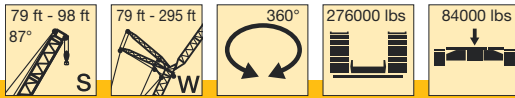
Lifting capacities on SDWB/BW boom/jib combination

Forces de levage en configuration SDWB/BW



Lifting capacities on SW boom/jib combination

Forces de levage en configuration SW



ft	79 ft												ft
	79 ft	98 ft	118 ft	138 ft	157 ft	177 ft	197 ft	217 ft	236 ft	256 ft	276 ft	295 ft	
36	326												36
38	310												38
40	294	282											40
45	261	251	237										45
50	235	227	219										50
55	213	206	199	192									55
60	194	188	182	175	169	164							60
65	175	173	168	162	156	151	145						65
70	159	159	156	150	145	140	137						70
75	145	145	144	140	135	131	127	123	110				75
80	133	133	133	131	126	122	119	115	109	95			80
85	123	123	123	122	118	115	112	108	105	94.5	79.5	69.5	85
90		114	114	113	112	108	105	102	98.5	93.5	79	69	90
95		107	106	105	104	102	99	96	93	90	78	68.5	95
100		99.5	99.5	98.5	97.5	96	93.5	90.5	87.5	85	77	68	100
105			93	92.5	91.5	90.5	88.5	86	83	80.5	76.5	67.5	105
110			88	87	86	85	84	81.5	78.5	76	73.5	67	110
115			83	82	81	80	79.5	77.5	74.5	72.5	70	66	115
120			78.5	77.5	76.5	75.5	75	73.5	71	68.5	66	64.5	120
125				73	72.5	71.5	71	70	67.5	65	63	61.5	125
130				69.5	68.5	67.5	67	66.5	64.5	62	59.9	58.3	130
135				66	65.5	64.5	64	63	61.5	59.3	57.1	55.6	135
140				63	62	61	60.5	59.8	58.6	56.6	54.4	53	140
150					56.5	55.4	55	54.1	53.2	51.7	49.6	48.2	150
160						50.5	50	49.1	48.2	47.2	45.2	43.9	160
170						46.2	45.7	44.7	43.9	43	41.3	40	170
180						42.5	42	41	40.1	39.3	37.9	36.6	180
190							38.7	37.7	36.8	35.9	34.7	33.6	190
200								34.7	33.8	32.9	31.6	30.7	200
210								32	31.1	30.1	28.6	27.7	210
220								29.6	28.6	27.5	26	25.2	220
230									26.4	24.9	23.6	22.8	230
240										22.5	21.2	20.7	240
250										20.5	18.9	18.6	250
260										18.7	17.2	16.6	260
270											15.8	14.8	270
280												13.4	280
290												12.2	290
300												11.1	300

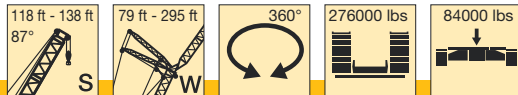
TAB 136096

ft	98 ft												ft
	79 ft	98 ft	118 ft	138 ft	157 ft	177 ft	197 ft	217 ft	236 ft	256 ft	276 ft	295 ft	
36	309												36
38	295												38
40	280												40
45	250	236	227										45
50	226	218	210										50
55	205	198	191	184									55
60	187	181	175	169	164	158							60
65	173	167	162	156	152	147	140						65
70	158	155	150	145	141	136	132						70
75	145	144	140	135	131	127	123	118					75
80	133	133	131	126	123	119	115	112	102	89			80
85	123	123	122	119	115	112	108	105	101	88.5	75		85
90		114	114	112	109	105	102	98.5	95.5	88	74		90
95		106	106	105	103	99.5	96	93	90	86	73.5	64.5	95
100		99.5	99	98	97	94	90.5	88	85	82	72.5	64	100
105			93	92	91.5	89	86	83	80.5	77.5	72	63.5	105
110			87.5	86.5	86	84.5	81.5	79	76	73.5	70.5	63	110
115			82.5	81.5	81	80	77.5	75	72.5	70	67.5	62.5	115
120			78	77	76.5	75.5	74	71.5	68.5	66.5	64	61.5	120
125				73	72.5	71.5	70.5	68	65.5	63	61	59.3	125
130				69	68.5	67.5	67	65	62.5	60	57.9	56.4	130
135				66	65.5	64.5	63.5	62	59.6	57.4	55.2	53.8	135
140				62.5	62	61.5	60.5	59.2	56.9	54.8	52.6	51.2	140
150					56.5	55.6	54.7	53.8	52	50	47.9	46.5	150
160						50.6	49.7	48.8	47.6	45.7	43.7	42.4	160
170						46.3	45.4	44.5	43.6	41.9	39.9	38.6	170
180						42.6	41.7	40.8	39.9	38.5	36.6	35.3	180
190							38.4	37.5	36.5	35.4	33.6	32.3	190
200								34.4	33.5	32.4	30.7	29.6	200
210								31.7	30.7	29.5	27.8	26.9	210
220								29.4	27.9	26.8	25.2	24.4	220
230									25.6	24.1	22.8	22.1	230
240										21.8	20.4	20	240
250										19.8	18.2	18	250
260										18.1	16.5	16	260
270											15.1	14.3	270
280												12.9	280
290												11.7	290
300												10.6	300

TAB 136096

Lifting capacities on SW boom/jib combination

Forces de levage en configuration SW



ft	118 ft												ft
	79 ft	98 ft	118 ft	138 ft	157 ft	177 ft	197 ft	217 ft	236 ft	256 ft	276 ft	295 ft	
36	295												36
38	281												38
40	268												40
45	240	226	218										45
50	217	209	202										50
55	198	191	184	178									55
60	181	175	169	163	158								60
65	167	162	156	151	146	140	129						65
70	156	150	146	141	136	132	126						70
75	144	140	136	131	127	123	120	110					75
80	133	131	127	123	119	115	112	108	95				80
85	123	123	119	115	112	108	105	101	94	82	69.5		85
90		114	113	109	105	102	99.5	95.5	92	81.5	69		90
95		106	106	103	99.5	96	93.5	90	88	80.5	68.5	59.9	95
100		99.5	99	97	94	91	88.5	85	83	79	68	59.5	100
105			92.5	92	89	86	84	80.5	78.5	75	67	59	105
110			87.5	86.5	84.5	82	80	76.5	74.5	71.5	66.5	58.6	110
115			82.5	81.5	80.5	78	76	72.5	71	67.5	64.5	58.3	115
120			78	77	76	74	72.5	69	67.5	64	62	57.9	120
125				73	72	70.5	69	65.5	64	61	58.7	57.2	125
130				69	68.5	67.5	66	62.5	61	58.2	55.9	54.4	130
135				66	65	64	63	59.9	58.5	55.5	53.3	51.9	135
140				62.5	62	61	60	57.3	55.9	53	50.8	49.4	140
150					56.1	55.2	54.9	52.5	51.1	48.3	46.2	44.9	150
160						50.3	49.9	48.1	46.9	44.1	42.1	40.8	160
170						46	45.6	44.2	43.1	40.4	38.4	37.2	170
180						42.3	41.9	40.5	39.8	37.1	35.2	34	180
190							38.5	37.2	36.6	34.2	32.3	31.1	190
200								34.1	33.6	31.4	29.5	28.4	200
210								31.1	30.5	28.5	26.8	26	210
220								28.7	27.7	25.9	24.4	23.4	220
230									25.3	23.3	22	21.2	230
240										21	19.7	19.2	240
250										19.1	17.6	17.2	250
260										17.4	15.9	15.4	260
270											14.5	13.7	270
280												12.3	280
290												11.1	290
300												10.1	300

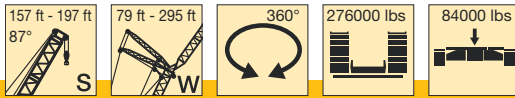
TAB 136096

ft	138 ft												ft
	79 ft	98 ft	118 ft	138 ft	157 ft	177 ft	197 ft	217 ft	236 ft	256 ft	276 ft	295 ft	
40	257												40
45	231	217											45
50	209	201											50
55	191	184	178	171									55
60	175	169	164	158	152								60
65	162	156	151	146	141	132							65
70	151	146	141	136	132	126							70
75	141	136	132	127	123	118	112	99.5					75
80	132	127	123	119	115	111	108	98.5	86				80
85	123	120	116	112	109	104	102	97	85.5	74.5	64.5		85
90	114	113	110	106	102	98	96	92.5	84	74	64		90
95		106	104	100	97	93	90.5	88	82.5	73	63.5	55.6	95
100		99.5	98	95	91.5	88	85.5	83	80	72	62.5	55.2	100
105		93	92.5	90	87	83	81	78.5	76	71	62	54.7	105
110		87.5	87.5	85.5	82.5	79	77	74.5	72	68.5	61.5	54.1	110
115			82.5	81.5	79	75	73.5	71	68.5	65	61	53.5	115
120			78	77	75	71.5	70	67.5	65	62	59.7	52.9	120
125			73.5	73	71.5	68.5	66.5	64.5	62	58.9	57.7	52.4	125
130			70	69	68.5	65.5	63.5	61.5	59.1	56.1	54.9	51.6	130
135				66	65	62.5	61	58.8	56.5	53.5	52.4	49.7	135
140				62.5	62	60	58.3	56.2	54	51	50	47.5	140
150					56.2	54.8	53.6	51.5	49.4	46.5	45.5	43.2	150
160					51.2	49.9	49.3	47.3	45.2	42.5	41.5	39.2	160
170					46.9	45.6	45.3	43.6	41.5	38.8	37.9	35.7	170
180						42	41.6	40.4	38.3	35.7	34.7	32.6	180
190							38.2	37.1	35.4	32.8	31.9	29.8	190
200							35.1	33.9	32.5	30.1	29.2	27.2	200
210								30.8	29.5	27.5	26.7	24.8	210
220								28.2	26.8	24.8	24.3	22.3	220
230									24.4	22.3	21.9	20.2	230
240									22.3	20.1	19.7	18.3	240
250										18.2	17.5	16.4	250
260										16.7	15.7	14.7	260
270											14.3	13.1	270
280												11.6	280
290												10.5	290
300												9.5	300

TAB 136096

Lifting capacities on SW boom/jib combination

Forces de levage en configuration SW



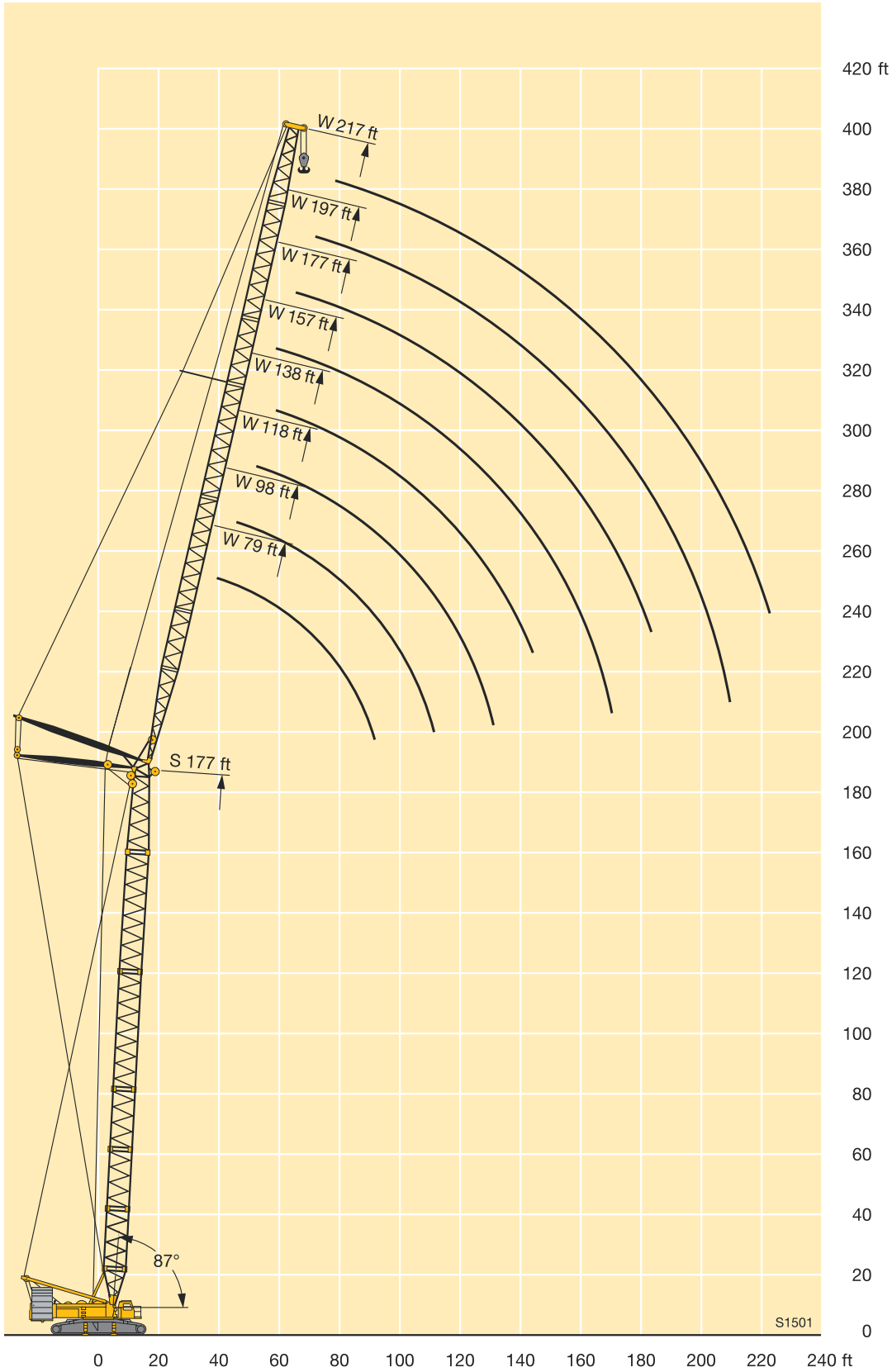
ft	157 ft												ft
	79 ft	98 ft	118 ft	138 ft	157 ft	177 ft	197 ft	217 ft	236 ft	256 ft	276 ft	295 ft	
40	236												40
45	219												45
50	201	207											50
55	184	177											55
60	169	163	170	155									60
65	157	151	158	150	135								65
70	146	141	147	141	132	117							70
75	137	132	137	132	126	115							75
80	128	124	128	124	120	112	99.5	88.5					80
85	121	116	120	116	112	108	97.5	87.5	76.5				85
90	113	110	113	109	106	101	95.5	85.5	76	66.5			90
95		104	107	103	100	95.5	92	84	74.5	66			95
100		98.5	101	97.5	94.5	90.5	87.5	82.5	73.5	65	57.1	49.8	100
105		93	91	87.5	85	81	78.5	76	71	63	55.6	48.6	105
110		87.5	86.5	83.5	81	77	74.5	72	69	62	54.8	48	110
115			82	79.5	77	73.5	71	68.5	66	61	54	47.3	115
120			77.5	76	73.5	70	67.5	65	63	59.2	53.1	46.7	120
125			73.5	72.5	70	67	64.5	62	59.8	56.7	52.2	46.1	125
130			70	69	67	64	61.5	59.3	57	54	51.2	45.3	130
135				66	64.5	61.5	58.8	56.7	54.4	51.5	49.5	44.5	135
140					62.5	61.5	58.7	56.3	54.2	52	49.1	47.7	140
150						56.3	54	51.7	49.7	47.5	44.7	43.7	150
160						51.3	49.8	47.6	45.6	43.5	40.8	39.8	160
170						46.9	45.8	44	42	40	37.3	36.4	170
180							42.1	40.6	38.9	36.8	34.2	33.3	180
190								37.3	35.8	34	31.4	30.5	190
200								34.1	32.9	31.3	28.8	27.9	200
210									29.8	28.5	26.3	25.6	210
220									27.3	25.8	23.8	23.3	220
230										23.4	21.3	21	230
240										21.3	19.1	18.9	240
250											17.2	16.8	250
260											15.8	15.1	260
270												13.6	270
280												12.4	280
290													290
300													300

TAB 136096

ft	177 ft								197 ft				ft
	79 ft	98 ft	118 ft	138 ft	157 ft	177 ft	197 ft	217 ft	79 ft	98 ft	118 ft	138 ft	
40	206												40
45	204												45
50	191	180								176	157		50
55	177	167								169	152		55
60	163	158	152							161	146	133	60
65	151	146	147	133	119					153	140	128	65
70	141	136	141	129	116	103				146	134	124	70
75	132	128	132	125	113	101				137	128	119	75
80	124	120	124	119	110	98.5	88.5			128	122	114	80
85	117	113	116	112	106	96	86.5	77		120	116	110	85
90	111	107	110	105	102	93.5	84.5	75.5		114	110	105	90
95		101	104	99.5	96	90.5	82.5	74		108	104	100	95
100		96	98	94	91	87	80.5	72.5			98.5	95.5	100
105		91.5	93	89	86.5	82.5	78.5	71			93.5	90.5	105
110		87	88.5	84.5	82	78.5	76	69			89	86.5	110
115			84.5	80.5	78	74.5	72.5	67.5			85.5	82.5	115
120			80.5	77	74.5	71	69.5	65.5				78.5	120
125			77	73.5	71	67.5	66	63				75.5	125
130			73.5	70.5	68	64.5	63	59.9				72	130
135			70	67.5	65	61.5	60	57.1				69.5	135
140				64.5	62.5	59.1	57.6	54.6					140
150				62	59.8	56.6	55.2	52.2					150
160					55.2	52.1	50.7	47.8					160
170					51	48.1	46.7	43.9					170
180					46.6	44.6	43.1	40.4					180
190						40.9	40	37.3					190
200							36.8	34.5					200
210							33.7	31.7					210
220								28.7					220

TAB 136096

Lifting capacities on SW boom/jib combination Forces de levage en configuration SW



Lifting capacities on SWF boom/jib combination

Forces de levage en configuration SWF



ft	138 ft										ft	
	39 ft		59 ft		79 ft		98 ft		118 ft			
	3°	25°	3°	25°	3°	25°	3°	25°	3°	25°		
65	109											65
70	107											70
75	105											75
80	103	89.5	87.5	86		68						80
85	99.5	87.5	84			67.5		52.5				85
90	94	85.5	82			66		52.1				90
95	89	84	80	62		64.5		51.7		39.8		95
100	84	82	77.5	60.5		63		51.3		39.3		100
105	79.5	80.5	75.5	59.1		61	48	50.9		38.8		105
110	75.5	77.5	73.5	57.8		59.4	46.8	49.9		38.4		110
115	72	74	71	56.6		57.7	45.7	48.7		37.9		115
120	68.5	70.5	68.5	55.5		56	44.7	47.4	37.2	37.4		120
125	65	67	65	54.4		54.4	43.7	46.1	36.3	36.9		125
130	62	64	62	53.3		52.9	42.8	44.8	35.4	36.5	29.9	130
135	59.6	61	59.6	52.4		51.5	42	43.7	34.6	35.9	29.3	135
140	57	58.6	57.1	51.6		50.1	41.2	42.5	33.9	35.3	28.7	140
150	52.3	53.7	52.4	50.1		47.5	39.7	40.3	32.5	33.9	27.4	150
160	48	49.1	48.2	48.2		45.1	38.3	38.3	31.2	32.4	26.1	160
170	43.6	44.4	44.4	45.1		42.8	37.2	36.3	30	30.8	25	170
180	39.6		40.5	41		40	36.2	34.6	28.8	29.3	23.8	180
190			37			36.9	35.4	32.9	27.7	27.9	22.7	190
200						33.7	34.1	31.5	26.7	26.5	21.7	200
210								30.2	25.7	25.3	20.8	210
220								28.4	25.1	24.3	20	220
230								26.3		23.4	19.3	230
240										22.5	18.9	240

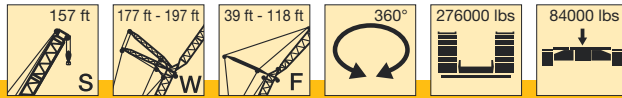
TAB 136140 / 136146

ft	157 ft										ft		
	39 ft		59 ft		79 ft		98 ft		118 ft				
	3°	25°	3°	25°	3°	25°	3°	25°	3°	25°			
75	94											75	
80	92.5			78.5								80	
85	90.5	81.5		77.5		61.5						85	
90	89	80		76		61						90	
95	85.5	78.5		75		60		48.3			37.4	95	
100	81.5	77		73.5	56.7	59		47.9			37.1	100	
105	77	75.5		71.5	55.5	57.8		47.6			36.7	105	
110	73	74		69.5	54.4	56.5	43.6	47			36.4	110	
115	69.5	71		67.5	53.3	55	42.9	46.2			36.1	115	
120	66	67.5		65	52.3	53.5	42	45.2			35.7	120	
125	63	64		62	51.3	52	41.1	44	33.9		35.3	125	
130	60	61		59.2	50.3	50.7	40.3	42.9	33.1		34.8	27.8	130
135	57.4	58.3		56.6	49.5	49.4	39.5	41.8	32.4		34.3	27.3	135
140	54.8	55.7		54.1	48.6	48.1	38.8	40.8	31.7		33.7	26.7	140
150	50.2	50.9		49.6	47.1	45.7	37.4	38.8	30.5		32.3	25.5	150
160	46.1	46.6		45.5	45.5	43.5	36.2	36.9	29.3		30.9	24.4	160
170	42.4	42.8		41.9	42.8	41.4	35	35.1	28.2		29.5	23.4	170
180	38.7	38.8		38.5	39.4	38.3	34.1	33.5	27.3		28.1	22.5	180
190	35.1			35.2	35.8	35	33.2	32	26.5		26.8	21.7	190
200				32	32.3	31.8	32.2	30.5	25.8		25.6	20.9	200
210						28.9	30.5	29.3	25.1		24.4	20.3	210
220						26.4	27.7	26.9	24.6		23.3	19.7	220
230						24		24.7	23.9		22.4	19.2	230
240								22.5	22.7		21.3	18.7	240
250											19.9	18.3	250
260											18.2	17.9	260
270											16.6		270

TAB 136140 / 136146

Lifting capacities on SWF boom/jib combination

Forces de levage en configuration SWF



ft	177 ft										ft	
	39 ft		59 ft		79 ft		98 ft		118 ft			
	3°	25°	3°	25°	3°	25°	3°	25°	3°	25°		
80	82											80
85	80.5											85
90	79.5											90
95	78	70.5				55.2						95
100	76	69				54.1		44.3		34.7		100
105	73.5	68			51.6	52.9		44		34.5		105
110	69.5	66.5			62	50.5		43.3		34.2		110
115	66	65			60.5	49.5		42.4		33.9		115
120	63	63.5			59.1	48.4		41.4		33.6		120
125	59.7	61			57.7	47.5		40.3		33.3		125
130	56.9	58.1			56.3	46.5		39.3	30.2	32.8		130
135	54.3	55.4			54.2	45.7		38.3	29.7	32.1		135
140	51.8	52.9			52	44.8		37.3	29	31.3	24.9	140
150	47.3	48.1			47.7	43.3		35.4	27.8	29.7	24.3	150
160	43.2	43.9			43.6	41.8		33.6	26.6	28.2	23.2	160
170	39.6	40.1			40	40.6		31.6	25.6	26.8	22.2	170
180	35.9	36.4			36.3	37.8		30.5	24.6	25.5	21.3	180
190	32.5	32.8			32.7	34.5		29.6	23.8	24.3	20.5	190
200	29.3	29.4			29.4	31.1		28.8	23	23.1	19.7	200
210					26.5	27.9		27.3	22.3	22	19	210
220					24	25		24.8	21.7	21	18.4	220
230					21.6			22.5	21.2	20	17.9	230
240								20.3	20.3	18.9	17.4	240
250								18.3	18.8	17.5	16.9	250
260								16.6	16.9	16.1	16.6	260
270								15		14.7	15.8	270
280										13.4	14.7	280

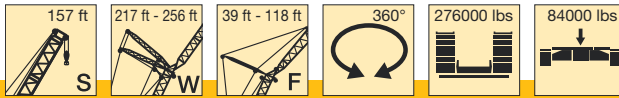
TAB 136140 / 136146

ft	197 ft										ft	
	39 ft		59 ft		79 ft		98 ft		118 ft			
	3°	25°	3°	25°	3°	25°	3°	25°	3°	25°		
85	71.5											85
90	70.5											90
95	69.5	66.5										95
100	68.5	65.5				50.3		40.7				100
105	67.5	64.5				49.8		40.4		31.9		105
110	66	63.5				49.1		40.1		31.7		110
115	63.5	62.5				48.4		39.8		31.4		115
120	60	61				47.7		39.5		31.2		120
125	57.1	58.6				46.9	38.1	39.1		31		125
130	54.3	55.7				46	37.4	38.5	30.8	30.8		130
135	51.8	53.1				45.1	36.7	37.8	30.4	30.5		135
140	49.3	50.5				44.2	36.1	37	29.8	30.3	25.4	140
150	44.9	45.9				43.8	34.9	35.5	28.7	29.8	24.9	150
160	40.8	41.7				42.1	33.8	34	27.7	29.1	24	160
170	37.3	38				39.2	32.7	32.7	26.7	28.1	23.1	170
180	34.2	34.7				36	31.8	31.4	25.8	27.1	22.3	180
190	30.9	31.4				31.8	32.9	31.5	30.9	30	25	190
200	27.7	28.1				28.9	29.9	28.8	29.6	28.2	24.2	200
210	24.8	25				25.8	26.7	26	27.3	25.5	23.5	210
220	22.3	22.4				23.3	23.8	23.2	24.5	22.9	22.9	220
230	19.9					21	21.3	20.8	21.8	20.5	21.6	230
240						18.9		18.8	19.4	18.4	19.7	240
250								17	17.3	16.5	17.5	250
260								15.4	15.6	15.1	15.6	260
270								13.8		13.7	14	270
280										12.4		280
290											12.8	290
300											11.7	300
310											10.5	310

TAB 136140 / 136146

Lifting capacities on SWF boom/jib combination

Forces de levage en configuration SWF



ft	217 ft										ft
	39 ft		59 ft		79 ft		98 ft		118 ft		
	3°	25°	3°	25°	3°	25°	3°	25°	3°	25°	
85	63										85
90	62										90
95	61.5		54.1								95
100	60.5	58	53.4		45.6						100
105	59.7	57.1	52.6		45.1		36.5				105
110	58.9	56.3	51.8	44.6	44.4		36.3		29.1		110
115	57.9	55.5	51.1	44	43.7		36		29		115
120	56.6	54.7	50.4	43.2	42.9		35.7		28.8		120
125	55.1	54	49.6	42.5	42.1	34.2	35.2		28.6		125
130	52.4	53.2	48.7	41.7	41.3	33.6	34.6		28.4		130
135	49.9	51.1	47.4	41	40.5	33	33.9		28.2		135
140	47.5	48.7	46.1	40.4	39.6	32.4	33.3	27.2	28		140
150	43.1	44.2	42.6	39	38	31.2	31.9	26.6	27.3		150
160	39.1	40.1	38.7	37.8	36.4	30.1	30.5	25.6	26.3	21.4	160
170	35.6	36.4	35.2	36.6	34.7	29.1	29.2	24.7	25.3	20.6	170
180	32.5	33.2	32.2	33.6	31.8	28.2	28	23.8	24.3	19.8	180
190	29.5	30.2	29.4	30.6	29	27.3	26.8	23	23.3	19.1	190
200	26.6	27.2	26.6	27.7	26.4	26.4	25.3	22.2	22.4	18.4	200
210	23.5	23.9	23.8	24.8	24	25.4	23.1	21.5	21.5	17.8	210
220	21.1	21.2	21.1	22	21.3	22.8	20.9	20.9	20.5	17.2	220
230	18.9	18.9	18.8	19.3	18.8	20.3	18.7	20.3	18.9	16.6	230
240	16.9		16.8	17	16.6	17.9	16.6	19.2	17.1	16.1	240
250			15.2	15.1	14.7	15.7	14.7	17.2	15.4	15.7	250
260			13.6	13.5	13.3	13.8	13	15.3	13.8	14.9	260
270			12.1		12	12.3	11.7	13.6	12.3	13.6	270
280					10.8		10.6	12	11	12.2	280
290							9.5	10.6	9.9	10.8	290
300							8.4	9.3	8.9	9.5	300
310							7.4		7.9	8.4	310
320									6.9		320

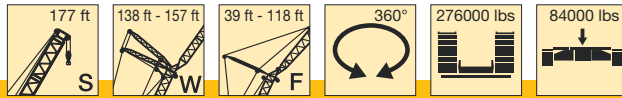
TAB 136140 / 136146

ft	236 ft								256 ft				ft
	39 ft		59 ft		79 ft		39 ft		59 ft				
	3°	25°	3°	25°	3°	25°	3°	25°	3°	25°			
95	53.6											95	
100	52.9		47.1					45.6				100	
105	52.1	51.6	46.4		40.4		45		40.3			105	
110	51.5	50.9	45.9		40.2		44.5	44.4	39.9			110	
115	50.8	50.2	45.3		40		44	44	39.5			115	
120	50	49.5	44.8	41.2	39.5		43.5	43.5	39			120	
125	49.1	48.9	44.2	40.7	39		43	42.9	38.6	35.3		125	
130	48.1	48.2	43.6	40.1	38.6	33.2	42.3	42.4	38.2	34.8		130	
135	46.5	47.1	42.9	39.7	38	32.9	41.6	41.8	37.6	34.3		135	
140	44.7	45.7	42.1	39.2	37.5	32.5	40.8	41.2	37	33.8		140	
150	40.9	42.2	39.7	38.2	36.3	31.7	38	38.9	35.7	32.9		150	
160	37	38.1	36.6	37	34.8	30.8	34.3	35.6	33.9	32		160	
170	33.5	34.5	33.2	34.9	32.7	29.9	30.9	32	30.6	31.1		170	
180	30.5	31.3	30.2	31.8	29.8	29.1	27.9	28.9	27.6	29		180	
190	27.7	28.4	27.4	28.8	27.1	28	25.1	26	24.9	26.5		190	
200	25	25.6	24.9	26.1	24.5	26.4	22.6	23.3	22.4	23.8		200	
210	22.2	22.8	22.5	23.6	22.2	23.9	20.3	20.9	20.1	21.2		210	
220	19.4	20	19.9	21	20.1	21.6	17.8	18.5	18.1	18.9		220	
230	17.2	17.5	17.4	18.6	17.9	19.6	15.5	16.1	16	16.8		230	
240	15.4	15.4	15.3	16.2	15.7	17.6	13.4	13.9	13.9	14.7		240	
250	13.7	13.7	13.5	14.1	13.7	15.8	11.7	11.9	11.9	12.8		250	
260	12.2	12.1	12.1	12.4	12	13.9	10.3	10.4	10.3	11		260	
270	10.8		10.8	10.9	10.7	12.2	9.1	9.1	9	9.4		270	
280			9.6		9.5	10.7	7.8		7.9	8		280	
290					8.4	9.3			6.8	6.8		290	
300					7.3	8.1			5.7	5.6		300	
310					6.3							310	

TAB 136140 / 136146

Lifting capacities on SWF boom/jib combination

Forces de levage en configuration SWF



ft	138 ft										ft	
	39 ft		59 ft		79 ft		98 ft		118 ft			
	3°	25°	3°	25°	3°	25°	3°	25°	3°	25°		
65	97											65
70	95											70
75	93											75
80	91	86.5	80.5			63						80
85	89	84.5	79			62.5		49.7				85
90	86.5	83	77.5			62		49.4				90
95	84	81.5	76	61	61.5			49.1		38.1		95
100	81	79.5	74	59.6	60.5			48.7		37.7		100
105	77.5	78	72	58.3	59.1	47.4		48.4		37.3		105
110	73.5	75	70.5	57	57.6	46.3		48		37		110
115	70	71.5	68.5	55.9	56	45.2		47.2		36.6		115
120	67	68	66	54.8	54.5	44.2		46.2	36.7	36.1		120
125	63.5	64.5	63	53.8	53.1	43.3		45.1	35.9	35.7		125
130	61	62	60	52.8	51.8	42.4		43.9	35	35.3	29.5	130
135	58.3	59.1	57.5	51.9	50.5	41.6		42.9	34.3	34.8	29	135
140	55.8	56.5	55	51	49.2	40.8		41.8	33.6	34.3	28.4	140
150	51.2	51.7	50.5	49.4	46.8	39.4		39.8	32.2	33.2	27.1	150
160	47	47.4	46.5	47.4	44.5	38		37.8	31	31.8	25.9	160
170	42.9	43	42.9	43.5	42.3	36.9		36	29.8	30.2	24.8	170
180	38.9		39.1	39.5	38.7	35.9		34.3	28.8	28.8	23.8	180
190			35.6			35.4		34.9	27.7	27.5	22.7	190
200						32.3		33.4	26.7	26.2	21.7	200
210						29.5			30	25.8	25	210
220						26.9			27.4	25	24	220
230									25.1		23.1	230
240											22	240

TAB 136140 / 136146

ft	157 ft										ft	
	39 ft		59 ft		79 ft		39 ft		59 ft			
	3°	25°	3°	25°	3°	25°	3°	25°	3°	25°		
75	82.5											75
80	81.5			70.5								80
85	80	77.5	70.5			57.7						85
90	78.5	76.5	69.5			57.3						90
95	76.5	75	68.5			57		45.3				95
100	74.5	73.5	67	56.5	56.6			45		35.3		100
105	72.5	72.5	66	55.4	56			44.6		35		105
110	70	70.5	64	54.3	55	43		44.3		34.7		110
115	67	68	62.5	53.3	53.8	42.3		44		34.4		115
120	63.5	65	61	52.3	52.6	41.5		43.5		34.1		120
125	60.5	61.5	59.5	51.4	51.3	40.6		42.7	33.4	33.8		125
130	57.8	58.8	56.9	50.5	50.1	39.8		41.7	32.7	33.4		130
135	55.2	56.2	54.5	49.7	49	39.1		40.7	32.1	33		135
140	52.8	53.7	52.1	48.9	47.9	38.4		39.8	31.4	32.6	26.8	140
150	48.3	49	47.7	47.2	45.7	37		38	30.2	31.5	26.2	150
160	44.3	44.8	43.7	44.9	43.5	35.8		36.2	29	30.3	25.2	160
170	40.7	41.1	40.2	41.2	40.5	34.7		34.6	28	29	24.2	170
180	37.2	37.3	37	37.9	37.5	33.7		33	27.1	27.6	23.3	180
190	33.8		33.7	34.9	34.4	32.9		31.6	26.3	26.4	22.4	190
200			30.6	31.9	31.4	31.6		30	25.5	25.2	21.6	200
210					28.5	29.3		28.3	24.9	24.1	21	210
220					26.1	26.5		25.7	24.4	23	20.4	220
230					23.7			23.5	23.4	22.1	19.8	230
240								21.4	21.9	20.8	19.3	240
250										19.1	19	250
260										17.4	18.4	260
270										15.9		270

TAB 136140 / 136146

Lifting capacities on SWF boom/jib combination

Forces de levage en configuration SWF



ft	177 ft										ft
	39 ft		59 ft		79 ft		98 ft		118 ft		
	3°	25°	3°	25°	3°	25°	3°	25°	3°	25°	
80	72.5										80
85	71		63								85
90	69.5		62								90
95	68.5	67.5	61		52						95
100	67	66	60		51.3		41.7		33		100
105	65.5	65	59.3	50.5	50.5		41.4		32.7		105
110	63.5	63.5	58.1	49.5	49.6		41.1		32.4		110
115	62	62	56.8	48.5	48.6		40.6		32.2		115
120	59.8	60.5	55.5	47.6	47.6	37.9	39.9		32		120
125	57.4	58.6	54.1	46.6	46.5	37.1	39		31.8		125
130	54.6	55.9	52.9	45.8	45.4	36.3	38.1	30.9	31.5		130
135	52.2	53.3	51.3	45	44.3	35.6	37.2	30.4	31.2		135
140	49.8	50.8	49.6	44.2	43.3	34.9	36.2	29.8	30.8	24.6	140
150	45.4	46.2	45.8	42.7	41.3	33.6	34.5	28.6	29.7	24	150
160	41.4	42.1	41.9	41.2	39.5	32.4	32.8	27.4	28.4	23	160
170	37.9	38.5	38.4	39.5	37.6	31.3	31.3	26.4	27.2	22	170
180	34.4	34.9	35.4	36.4	34.9	30.3	29.9	25.4	26	21.1	180
190	31.1	31.4	32.2	33.1	31.9	29.4	28.5	24.5	24.9	20.3	190
200	27.9	28.1	29	29.8	28.9	28.4	27.1	23.7	23.7	19.5	200
210			26.1	26.6	26	27.1	25.6	23	22.7	18.8	210
220			23.6	23.9	23.5	24.3	23	22.4	21.7	18.2	220
230			21.2		21.3	21.8	20.8	21.8	20.7	17.7	230
240					19.2	19.5	18.8	20.6	19.4	17.2	240
250							17.1	18.6	17.5	16.8	250
260							15.6	16.8	16.1	16.3	260
270							14.1		14.7	15.1	270
280									13.4	13.7	280

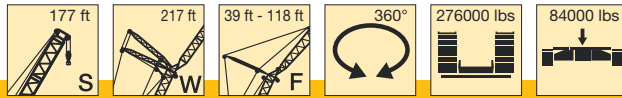
TAB 136140 / 136146

ft	196 ft										ft
	39 ft		59 ft		79 ft		98 ft		118 ft		
	3°	25°	3°	25°	3°	25°	3°	25°	3°	25°	
85	63.5										85
90	62.5										90
95	61		54.2								95
100	60	59.6	53.4		46.3						100
105	59.1	58.5	52.6		46		37.5		30.1		105
110	57.8	57.5	51.8	47.9	45.5		37.2		29.9		110
115	56.3	56.5	50.9	47.4	45		37		29.7		115
120	54.8	55.4	49.9	46.6	44.5		36.7		29.5		120
125	53.4	54.1	48.7	45.9	44	36.9	36.5		29.3		125
130	52	52.6	47.6	45.2	43.2	36.3	36.2	30.9	29.1		130
135	50.1	50.8	46.5	44.5	42.3	35.8	35.8	30.5	28.8		135
140	48.1	49	45.4	43.8	41.4	35.2	35.2	30	28.6	24.8	140
150	44	45	42.8	42.5	39.6	34.1	34	29	28.1	24.3	150
160	40.1	41	39.7	40.7	37.8	33.1	32.7	28	27.6	23.5	160
170	36.6	37.3	36.3	37.6	35.7	32.1	31.5	27.1	26.9	22.7	170
180	33.6	34.1	33.2	34.4	32.8	31.1	30.3	26.3	26	21.9	180
190	30.4	30.9	30.4	31.4	30	30.2	28.8	25.5	25.2	21.2	190
200	27.3	27.7	27.5	28.5	27.2	28.7	26.8	24.8	24.3	20.5	200
210	24.4	24.6	24.4	25.3	24.4	25.7	24	24.1	23.4	19.8	210
220	22	22	22	22.5	21.8	23	21.5	23.4	21.8	19.2	220
230	19.6		19.8	20	19.5	20.4	19.2	21.8	19.9	18.7	230
240			17.8		17.5	18.1	17.1	19.7	17.9	18.2	240
250					15.9	16.1	15.2	17.6	16	17.6	250
260					14.4	14.5	13.9	15.6	14.4	15.8	260
270							12.6	14	13.1	14.2	270
280							11.4		11.9	12.7	280
290									10.8	11.4	290
300									9.7	10.1	300
310									8.7		310

TAB 136140 / 136146

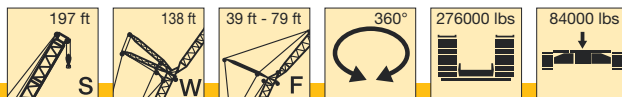
Lifting capacities on SWF boom/jib combination

Forces de levage en configuration SWF



ft	217 ft										ft	
	39 ft		59 ft		79 ft		98 ft		118 ft			
	3°	25°	3°	25°	3°	25°	3°	25°	3°	25°		
85	55.5											85
90	54.6											90
95	53.7		47.9									95
100	52.8	51.8	47.2		41.3							100
105	51.9	51.6	46.5		40.8		34.1					105
110	51.1	50.7	45.8	42.8	40.3		33.9		27.2			110
115	50.1	49.9	45.2	42.3	39.7		33.8		27.1			115
120	49	49	44.6	41.6	39.3		33.6		26.9			120
125	47.7	48.2	43.9	40.9	38.7	33.1	33.4		26.7			125
130	46.6	47.2	42.9	40.3	38.2	32.5	33.2		26.5			130
135	45.5	46.1	41.8	39.7	37.5	32	32.9		26.4			135
140	44.4	44.8	40.8	39.1	36.7	31.4	32.4	26.3	26.2			140
150	41.2	41.8	38.9	37.9	35.2	30.4	31.4	25.8	25.8			150
160	37.4	38.4	36.7	36.6	33.7	29.4	30.2	24.9	25.2	20.8		160
170	34	34.8	33.6	35.1	32.3	28.4	29	24.1	24.3	20.1		170
180	31	31.7	30.7	32.1	30	27.5	28	23.3	23.4	19.4		180
190	28.1	28.7	27.8	29.2	27.5	26.7	26.5	22.6	22.5	18.7		190
200	25.2	25.8	25	26.2	24.9	25.5	24.5	21.8	21.7	18.1		200
210	22.1	22.6	22.2	23.1	21.9	23.7	22.3	21.1	20.8	17.5		210
220	19.7	19.9	19.6	20.5	19.6	21	20.3	20.5	19.4	16.9		220
230	17.7	17.7	17.4	18.1	17.5	18.6	18.4	19.4	17.6	16.4		230
240	15.8		15.6	15.9	15.5	16.5	16.5	17.8	15.7	15.9		240
250			14	14.1	13.7	14.6	14.6	15.7	14	15.4		250
260			12.6	12.5	12.4	12.9	13	14.1	12.6	14.1		260
270			11.2		11.1	11.4	11.7	12.6	11.3	12.7		270
280					9.9		10.5	11.1	10.1	11.3		280
290							9.4	9.8	9.1	10		290
300							8.3	8.6	8.1	8.7		300
310							7.3		7.1	7.6		310
320									6.2			320

TAB 136140 / 136146



ft	138 ft						ft
	39 ft		59 ft		79 ft		
	3°	25°	3°	25°	3°	25°	
75	82						75
80	80	78.5	71				80
85	78	76.5	69.5			58.7	85
90	75.5	74.5	68			58.3	90
95	73.5	73	66.5			57.8	95
100	71	71	65	58.9		57.4	100
105	68.5	68.5	63	57.7		56.8	105
110	66.5	66.5	61	56.6		55.7	110
115	64.5	64.5	59.5	55.6		54.4	115
120	62	62.5	57.9	54.5		53	120
125	60	60.5	56.2	53.5		51.8	125
130	57.9	58.3	54.5	52.6		50.6	130
135	55.7	56.2	52.8	51.6		49.3	135
140	53.5	54.1	51.1	50.6		48.1	140
150	49.3	49.8	47.9	48.3		45.5	150
160	45.2	45.6	44.7	45.5		42.9	160
170	41.3	41.4	41.1	42		40.6	170
180	37.5		37.5	38.8		37.9	180
190			34.2			34.9	190
200						31.9	200
210						29.1	210
220						26.5	220

TAB 136140 / 136146

Lifting heights on SWF boom/jib combination Hauteur de levage en configuration SWF

