

Altec
CRANES

Altec AC30-103S Hydraulic Telescopic Crane





Altec AC30-103S Specifications



Altec LMAP System

STANDARD SAFETY FEATURES

- Altec LMAP (Load Moment & Area Protection) System
 - Rated Capacity Limiter
 - Displays: Boom Length, Boom Angle, Load on Hook, Percent of Rated Capacity
 - Electronic Working Area Definition
 - Operator Defined Audible Alarm Set-Points for Boom Angle, Length and Rotational Position
- Outrigger Boom Interlock System
- Outrigger Motion Alarm
- Back-Up Alarm
- Emergency Stop at Operator Controls
- Anti-Two Block Device
- Front Bumper Outrigger
- Altec Opti-View® Riding Seat Control Station
- Winch Drum Rotation Indicator

RECOMMENDED FEATURES

- Wheel Chocks
- Fall Protection System (with Platform)
- Radio Remote Control (with Platform)

CRANE SPECIFICATIONS

- 60,000 lb (27,215 kg) Maximum Lifting Capacity
- 103 ft (31.4 m) 4-Section Non-Insulated Boom
- 113 ft (34.4 m) Maximum Sheave Height
- Stowed Travel Height of 12.9 ft (3.9 m)
- Vehicle Travel Length of 38 ft (11.6 m)
- Sequential Out-and-Down Outriggers
 - Full Span 24 ft (7.3 m)
 - Mid Span 15.75 ft (4.8 m)
 - Short Span 8.17 ft (2.5 m)
- Hydraulic Pilot-Operated Control System
- Continuous Rotation
- Hydraulic Oil Cooling System
- Life Cycle Tested for Reliability

OPTIONS

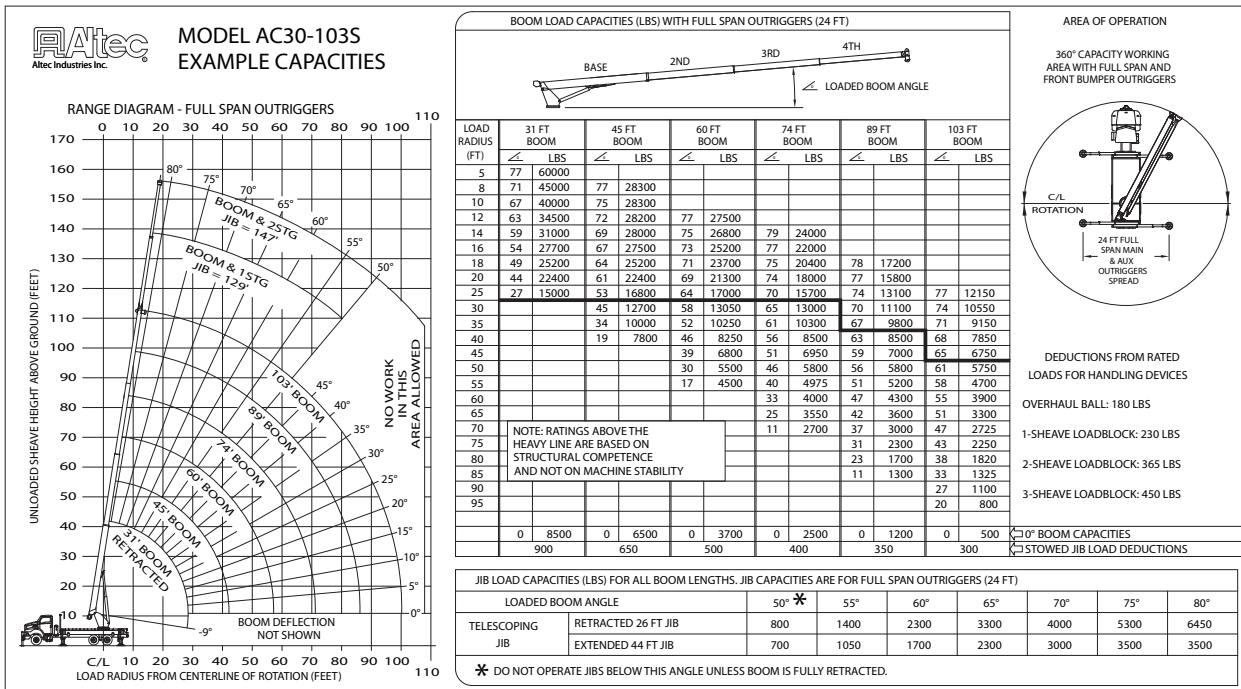
- 2-Piece 44 ft (13.4 m) Jib, 26 ft (7.9 m) Retracted
- 2-Man Steel Platform
- Climate-Controlled Enclosed Cab
- Load Blocks for Multiple Parts of Line
- Hydraulic Tool Circuit at Tail Shelf
- Pintle Hitch
- Winch Control at Load Hook Stow Point
- Utility Tool Boxes
- Rotation Resistant Wire Rope
- Glide Swing

MINIMUM CHASSIS REQUIREMENTS

| | Rear Tandem | |
|-----------------------------|-------------|-----------|
| Gross Vehicle Weight Rating | 60,000 lbs | 27,215 kg |
| Front Axle Weight Rating | 20,000 lbs | 9,072 kg |
| Rear Axle Rating | 40,000 lbs | 18,145 kg |
| Cab-To-Axle | 192 in | 4877 mm |
| Wheel Base | 262 in | 6655 mm |

Note: Crane with specific options may require pusher axle to comply with highway regulations.

Altec AC30-103S Capacities



| | | | | | | | |
|---|-------------------------------------|--------------------------|--------------------------|--------------------------|--------------------------|--------------------------|--------------------------|
| <p>OPERATOR AIDS MUST BE IN GOOD OPERATING CONDITION BEFORE OPERATING CRANE. REFER TO OWNERS MANUAL.</p> <p>KEEP AT LEAST 3 WRAPS OF LOADLINE ON DRUM AT ALL TIMES.</p> <p>USE ONLY 9/16" DIAMETER IWRC OR ROTATION RESISTANT WIRE ROPE WITH 37,000 LBS. MIN. BREAKING STRENGTH ON THIS MACHINE.</p> | 1 PART LOAD LINE | 2 PART LOAD LINE | 3 PART LOAD LINE | 4 PART LOAD LINE | 5 PART LOAD LINE | 6 PART LOAD LINE | |
| | | | | | | | |
| | LOADS UP TO | LOADS UP TO | LOADS UP TO | LOADS UP TO | LOADS UP TO | LOADS UP TO | |
| IWRC XXIP WIRE ROPE | 10,571 LBS. | 21,142 LBS. | 31,713 LBS. | 42,284 LBS. | 52,855 LBS. | 60,000 LBS. | |
| ROTATION RESISTANT WIRE ROPE | 7,400 LBS. | 14,800 LBS. | 22,200 LBS. | 29,600 LBS. | 37,000 LBS. | 44,400 LBS. | |
| MAXIMUM BOOM LENGTH AT MAXIMUM ELEVATION WITH RIGGING SHOWN TO REACH THE GROUND | 103 FT + 44 FT JIB | 103 FT BOOM | 74 FT BOOM | 56 FT BOOM | 45 FT BOOM | 37 FT BOOM | |
| WINCH | | LIFTS AND SPEEDS | | | | | |
| 9/16" DIAMETER IWRC XXIP CABLE SUPPLIED | STANDARD PLANETARY WINCH HIGH SPEED | 4,620 LBS. 249 FT/MIN | 9,240 LBS. 124 FT/MIN | 13,860 LBS. 83 FT/MIN | 18,480 LBS. 62 FT/MIN | 23,100 LBS. 50 FT/MIN | 27,720 LBS. 42 FT/MIN |
| | STANDARD PLANETARY WINCH LOW SPEED | 9,880 LBS. 115 FT/MIN | 19,760 LBS. 58 FT/MIN | 29,640 LBS. 38 FT/MIN | 39,520 LBS. 29 FT/MIN | 49,400 LBS. 23 FT/MIN | 59,280 LBS. 19 FT/MIN |
| ALL WINCH PULLS AND SPEEDS IN THIS CHART ARE SHOWN ON THE 3RD LAYER. WINCH LINE PULLS WOULD INCREASE ON THE FIRST AND SECOND LAYERS. WINCH LINE SPEED WOULD DECREASE ON THE FIRST AND SECOND LAYERS. WINCH LINE PULLS MAY BE LIMITED BY THE WINCH CAPACITY OF 8,390 LBS FULL DRUM OR ANSI CABLE SAFETY LIMITS SHOWN IN CHART FOR IWRC XXIP AND ROTATION RESISTANT WIRE ROPES. | | | | | | | |

CAUTION:

- Load ratings shown are maximum allowable loads with the crane mounted on an Altec-approved chassis.
- Loaded boom angles at specified boom lengths give only an approximation of the operating radius. The boom angle before loading should be greater to account for deflections. Do not exceed the operating radius for rated loads.
- When between listed lengths for radii always use the smallest of values shown. Capacities for the 31-foot boom length must only be lifted with boom fully retracted.
- Load ratings are based on freely suspended loads with the crane properly set up on outriggers, with the machine leveled and standing on firm uniform supporting surface.
- Actual working capacities depend on supporting surfaces, wind and other factors affecting stability such as hazardous surroundings, experience of personnel, and proper handling.
- Weights of load block, stowed jib, or other accessories must be deducted from the rated capacities shown.



For Service: 1-877-GO-ALTEC

For Sales: 1-866-966-2969

Altec Cranes are supported by service centers and over 115 mobile service technicians positioned across North America, seven days a week, 24 hours a day.

United States:

Alabama Service Center
1730 Vanderbilt Road
Birmingham, AL 35234

Arizona Service Center
2420 South 16th Avenue
Phoenix, AZ 85007

California Service Center (Northern)
325 Industrial Way
Dixon, CA 95620

California Service Center (Southern)
2882 Pomona Boulevard
Pomona, CA 91766

Colorado Service Center
641 Telluride Street
Aurora, CO 80011

Florida Service Center
2570 Old Okeechobee Road
West Palm Beach, FL 33409

Georgia Service Center
287 First Street
Forest Park, GA 30297

Indiana Service Center
5201 West 84th Street
Indianapolis, IN 46268

Kentucky Service Center
200 Altec Drive
Elizabethtown, KY 42701

Maryland Service Center
1434 Hughes Ford Road
Frederick, MD 21701

Massachusetts Service Center
28 Wales Street
Millbury, MA 01527

Missouri Service Center
2106 S. Riverside Road
St. Joseph, MO 64507

North Carolina Service Center
1550 Aerial Avenue
Creedmoor, NC 27522

Ohio Service Center
1236 Township Road 1175
Ashland, OH 44805

Oregon Service Center
13817 NE Sandy Boulevard
Portland, OR 97230

Pennsylvania Service Center
250 Laird Street
Plains, PA 18705

Texas Service Center
1001 Solon Road
Waxahachie, TX 75156

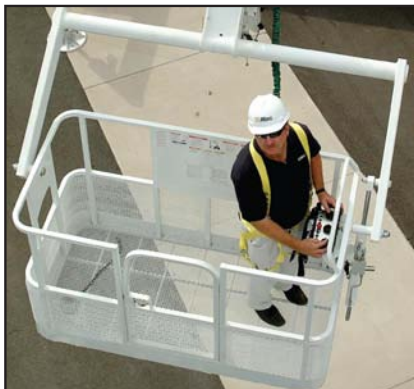
Virginia Service Center
325 South Center Drive
Daleville, VA 24083

Canada:

British Columbia Service Center
12352 84th Avenue
Surrey, BC V3W 0J5

Manitoba Service Center
57 Durand Road
Winnipeg, Manitoba R2J 3T1

Ontario Service Center
831 Nipissing Road
Milton, Ontario L9T 4Z4



Optional 2-Man Platform



Optional Climate Controlled Enclosed Cab

Altec Industries, Inc.

325 South Center Drive
Daleville, VA 24083
1-540-992-5300



Manufacturing and Service Facilities Located
Throughout the United States and Canada
www.altec.com

ALT4009925
AC30-103S-5M-7/08